

The Banner - Independent

Vol. 85 Number 7 Booneville, Mississippi Thursday, April 15, 1982 Phone 728-6214 22 Pages 25 Cents

In Brief

Prentiss Countian Pleads Innocent To Federal Charges

A Prentiss County man, who was recently indicted by a federal grand jury of interstate transportation of a stolen motor vehicle and concealing and disposing of a stolen motor vehicle, pleaded innocent to the charge when he appeared for arraignment in Oxford Tuesday before U.S. Magistrate Norman Gillespie.

The first count of the indictment returned against Sammy Lee Eaton, 38, of Route 1, Rienzi, charges that on August 6, 1981, he transported a stolen 1981 GMC pick-up from Shelby County, Tenn., to Prentiss County. The second count charges he concealed and disposed of the pick-up, knowing it to have been stolen.

Court date for the case is scheduled for June 7, in Aberdeen with U.S. District Judge L.T. Senter Jr. presiding.

Eaton was represented by Carol Theeatt, a court appointed attorney from the University of Mississippi. Eaton is free on \$2,500 bond.

Cochran To Attend Saturday Fish Fry

Sen. Thad Cochran will visit Booneville Saturday for a fish fry to be held at the Booneville West Side Park. The fish fry will start at noon.

Cochran's visit here is sponsored by the Prentiss County Republican Executive Committee. Party leaders and citizens from Tippah, Tishomingo and Alcorn counties are also expected to attend.

R.H. Bonds, spokesman for the committee, said the visit is a part of the Senator's plan to visit every area of the state periodically to stay in touch with his constituents.

Tickets for the fish fry are available from any member of the Prentiss County Republican Executive Committee.

Stennis Supporters To Meet Today

A group of Prentiss Countians supporting the re-election of Sen. John Stennis are holding an organizational meeting for the Prentiss County Campaign for Stennis at noon today in the Alumni Room of the Northeast Mississippi Junior College.

The meeting, which is open to the public, will include a "dutch" luncheon.

According to Stewart Vail, one of the organizers of the meeting, Marks Huff from Sen. Stennis' campaign headquarters will be at today's meeting with campaign buttons and bumper stickers.

Representatives from each community in Prentiss County are expected to attend the meeting, according to Vail. The public is also invited to attend, he said.

Booneville Pre-School Registration April 29

The Booneville Elementary School will hold pre-school registration for first graders from 9 a.m. until 2 p.m. April 27-29. Students may also be registered from 6 p.m. until 8 p.m. Thursday, April 29.

All children who will be 6 years old by Sept. 1, 1982, may register. School officials ask that parents bring a certified birth certificate and a Mississippi immunization record when they register their children.

For further information, call the Booneville Elementary School at 728-4437.

Thrasher Pre-School Registration April 23

The Thrasher Attendance Center will hold pre-school registration from 7:30 a.m. until 3 p.m. Friday, April 23, for students entering the first grade for the 1982-83 school year.

To be eligible to enroll in the first grade, a child must be six years old on or before Sept. 1, 1982. The child's certified birth certificate and immunization record (blue certificate of compliance) from the health department or a doctor are required.

Thrasher first grade students will not attend school on April 23.

County Jail Overcrowded

'How Many Can We Lock Up Tonight?'

By KEN CHRISTIAN
Editor

There are at least 251 known, wanted criminals (or at least suspects) walking the streets of Prentiss County today.

The Prentiss County Sheriff's Department has warrants to arrest all of them and even knows where to locate most of them, yet can do very little about it.

Because once the county jail is filled to its capacity with prisoners, the Sheriff's Department could be in violation of federal law if officers tried to put additional prisoners in the jail.

"We have 251 outstanding warrants we can't serve because we don't have anywhere to put the prisoners," Sheriff John McCauley said Tuesday.

Of the 251, he estimates that 50 are for women, five for juveniles and three are capias warrants (circuit court warrants).

The sheriff said he wants the people to know why many of the warrants are not being served and why the Sheriff's Department is operating at less than half of its capabilities. "It's because we have no room in the jail," he said.

'Drunks are running all over the county just like they were when I first took office. . .'

- Sheriff McCauley

In addition to the unserved warrants, "drunks are running all over the county just like they were when I first took office," McCauley said, "because once we reach our capacity, there's nothing we can do about it."

ALL COUNTY JAILS in the state of Mississippi are currently under a federal court order to meet minimal living standards for prisoners. However, the state attorney general's office has informally asked for an extension of that deadline until the court clarifies what the minimal standards are.

In an attempt to improve the situation at the Prentiss County Jail -- and also to protect himself from a possible lawsuit since he himself is liable if he has not attempted to make changes in the situation -- Sheriff McCauley has

presented a "Letter of Request" to the Prentiss County Board of Supervisors.

"I am requesting that we be furnished with room for 35 beds, a drunk tank, a padded cell, a juvenile department and a female department," McCauley told the supervisors. "We would also like to have a kitchen in our jail or have the meals furnished by the hospital. The meals we are getting now are not nutritionally balanced."

At the present time the county jail has a capacity of 12 prisoners. "For the past several months," the sheriff said, "we have had our jail and the city jail full, plus two working inmates (trusties) sleep on couches in the jail lobby."

"The city is complaining because we have their jail full and they have no where to lock up their prisoners," he said. "I can't blame them, because they can't do their job as it should be done. When they stop us from using their jail, we will have to let several prisoners go free that don't need to be on the streets."

J.P. DAVIS, PRESIDENT of the Board of Supervisors, said Wednesday that the board has discussed McCauley's

(See 'How Many,' Page 2)

Hits Building

Truck Goes For Joy Ride

By ANGELA SMITH
Staff Reporter

While Mrs. Joe Windham of Route 1, Booneville, was inside her doctor's office Monday, her 1974 Chevy Luv pick-up truck went for a little ride and crashed into the back of Reinbold Printing Co.

Officer David Wesson, who investigated the accident, said Mrs. Windham apparently left her truck in neutral when she parked in Dr. Cliff Cartwright's parking lot.

After Mrs. Windham went into the doctor's office, the accident that happened was one that "will never happen

again," Wesson said.

The truck started rolling and only missed hitting a pick-up by a foot. It veered between two parked cars, and jumped a curb, while missing every tree. It then went through some bushes before hitting Reinbold's metal building, Wesson said.

Wesson speculated it not for the bushes, the truck would have gone through the building.

No was hurt in the freak accident, although employees at Reinbold Printing were startled, to say the least.

"When we heard something slam into the back of the building we

rushed out to see what had happened and there was a truck!" Lenora Reinbold said.

Police were already on the scene when Mrs. Windham came out of the doctor's office, Wesson said.

Although the path of about 35 yards that the truck traveled seemed as if someone might be driving it, Wesson said the ground was muddy and no footprints were found near the truck.

Damage to Reinbold's building was about \$500, Mrs. Reinbold said. Wesson estimated damage to Mrs. Windham's truck to be about the same amount.

PCDA Directors Oppose Telephone Rate Increase

The Prentiss County Development Association plans to go on record opposing a rate increase which South Central Bell Telephone Company has submitted to the state Public Service Commission for approval.

Acting on the recommendation of Booneville Businessman Stewart Vail, the PCDA directors voted to have their attorney draw up a resolution which not only opposes the rate increase but which also notes PCDA's disapproval of the telephone service which residents of Prentiss County have received for a number of years.

Last week South Central Bell asked the Public Service Commission to approve a rate increase "to cover the steadily increasing cost of providing telephone service in Mississippi."

If the phone company's

request is approved, the charge for residential one-party service with one regular set would increase about \$7.50 per month. A one-party business phone customer with one regular set would pay an additional \$15.55 per month.

The request also includes a price increase from 10 to 25 cents for local calls from coin operated phones, as well as a restructuring and repricing for intrastate WATS customers.

"I think what they plan to do is pop it to the old folks and the poor people because they can't increase the long distance rates," Vail said in making his recommendation.

It was pointed out in the meeting that people who live in Baldwin and Wheeler can call all the way to Nettleton and it will still be a "local" call. Yet, "just about any direction you go from Booneville, you can find places in Prentiss County

that are 'long distance' from Booneville."

Booneville Mayor Charles Crabb also spoke in favor of PCDA opposing the rate increase and the telephone service here.

"I feel that we have been humiliated in our area," he said. "I am willing to go to any extent within the law to bring attention to South Central Bell our situation and get them to do something about it."

"If a person in Wheeler needs the sheriff or a fire truck from the city, he's got to call long distance the mayor said. "Southern Bell has discriminated against the citizens of Booneville and the outlying areas."

Vail said that all three of the Public Service Commissioners have said they oppose the rate increase requested by the phone company, but that even if they do not approve it, Bell will appeal it and go ahead with the increase.



ON THE HUNT -- A typical Easter scene, young Emily Fulper (front) and Mikey Burns look for Easter eggs hidden in the grass while Mikey's mother, Marie Burns, snaps photos at an Easter egg hunt and cookout held Saturday at the Catholic church on Highway 45 South of Booneville. Others participating in the egg hunt included Jep and Johnathan Madara, John Fulper, Shannon and Bobbie Bullock, and Patricia and Lyndon Ratliff.

Four Arrested For First-Degree Arson

Four people have been arrested on charges stemming from an April 1 fire that destroyed a Jumpertown house.

George Harkins, 54, of Jumpertown, Wilson O'Neal Turner, 33, of Pontotoc County, and Roe Daniel "Pete" Murphy, 37, of Lee County, were each charged with first-degree arson.

Linda (Mrs. Henry) Lawson, 29, of Jumpertown,

was charged with conspiracy to commit arson, said Carl Sartin, investigator for the Prentiss County Sheriff's Department.

Mrs. Lawson, owner of the burned brick house, and Harkins were arrested by Lee County lawmen Thursday of last week at a Tupelo motel.

Murphy turned himself in to the Prentiss County

Sheriff's Department Tuesday. He remains in the county jail on \$200,000 bond. Sartin said Murphy's bond was set at this figure because he is a convicted felon who is out on appeal and that he has been indicted on a charge of conspiracy to commit murder in a case involving Lee County Sheriff Robert Herring.

Mrs. Lawson was released

Monday from the Prentiss County jail on \$12,500 bond. Turner is free on \$20,000 bond. Harkins, whose bond is also set at \$20,000 remained in the Prentiss County jail as of Tuesday morning.

Some items that were in Mrs. Lawson's house before it burned were reportedly found in Turner's residence and in the home of "Pete"

Murphy.

The Booneville Fire Department received a call around 2:50 a.m. on April 1 that Mrs. Lawson's home was burning. Firemen from Booneville and Jumpertown battled the fire for almost three hours, but the home was a total loss. The damage was estimated to be \$75,000.

State Deputy Fire Marshall Mike Ivy said persons convicted of arson

charges could receive prison terms of two to 20 years.

Lawmen in Prentiss, Pontotoc and Lee Counties and Highway Patrol officers helped state fire officials with the investigation of the fire.

The arrests show that state and local authorities are working together to solve cases of suspected arson, Ivy said.

What's Going On?

Lakeview Bible Believing Church To Have Singing
Lakeview Bible Believing Church will have a singing featuring the Barnett Family Saturday, April 17, at 7 p.m.

City League Softball Meeting To Be Saturday
A City League Softball meeting will be held at the City Park on Saturday, April 17, at 9 a.m. This meeting is for any men's or women's softball teams who wish to enter in the 1982 Booneville City League Softball Program. Entry fee will be \$150 per team. Those interested should make immediate plans to sign up. For more information contact Ricky Gillentine at 728-5667.

Marietta Church To Have Singing-Revival
Marietta Calvary Baptist Church will have a singing Sunday, April 18, beginning at 1:30 featuring the Gospels and Cross Roads. A revival featuring different speakers each night will be held April 19-23 beginning at 7:30 nightly.

Students Of Art To Have Open House Saturday
The public is invited to an open house of Students of Art in Mississippi at 202 College St., on Saturday, April 17, from 2 p.m. until 8 p.m.

Film To Be Shown At East Booneville Church
"Beyond The Cross," a film documenting the life of Ivan Moiseyev, a young Russian who was murdered for his faith, will be shown at the East Booneville Baptist Church on Sunday, April 18, at 6 p.m. Admission to the film is free.

Bake And Yard Sale To Be Held Saturday
About 30 families will have a yard and bake sale Saturday, April 17, beginning at 8 a.m. across from the Dixieland Skating Rink. Proceeds will go for construction of the Hills Bypass Little League Ballfield.

Homecoming To Be Held At Friendship Church
A decoration day and homecoming will be held at Friendship Community Church located on Highway 4 east of New Site on Sunday, April 18 from 10 a.m. until 3 p.m. Lunch will be served at noon. The Singing Echoes will be guest singers. Cemetery cleaning will be held Saturday, April 17.

'How Many'

letter and that they have visited the jail to see the conditions for themselves. However, no formal action has been taken yet on McCauley's request.

"We did not know the situation was so bad," Davis said. "The jail has been set as a number one priority, but as far as going out and building a new jail or adding to this one there is no way the county can afford to do that with the funds available."

Davis said he anticipates that a number of federal Community Development Block Grants will become available shortly. "If Mississippi participates - and I hope it does - we hope to be able to get one to help us with this project," he said.

He said the board has not discussed the possibility of a bond issue, but that it could be discussed in the future. "We would like to investigate other possibilities first," he said.

The sheriff said he hates that the people of Prentiss County may have to pay for a new jail facility, but, he says, they are paying for it anyway. They pay for it when items are stolen from their homes and businesses by the criminals who are not locked up, and they pay for it through higher insurance rates.

He said that, at one time, at least one insurance company was considering a separate rate for Prentiss County, higher than anywhere else in the state, because of

the number of auto thefts here.

EVEN IF THE county does build a new jail, it's feasible that it would still not be in compliance with the federal court order because of the vagueness of the "minimal living standards."

"First we need the federal government to tell us what is acceptable," the sheriff said. "After they do, then we could know whether we could work this jail over or whether we would need to build a new one."

And, McCauley admits, it would be impossible to renovate or build a jail by the current June 1 deadline. But, he said, those counties who have made an acceptable beginning can probably get an extension of the deadline.

Despite the situation at the jail, McCauley praised the members of his department, saying, "A sheriff is exactly the kind of sheriff that his department makes him."

He said that when his men come on duty, the first thing they ask is, "How many can we lock up tonight?" And they usually have the jail full within 30-40 minutes because of the limited capacity.

He also had high praise for Donnitta Cobb, who serves as secretary, radio dispatcher and jailor. "Donnitta does an excellent job," he said. "She's dedicated; if she wasn't, she wouldn't be here."

(Continued from Page 1)

Police Arrest Report

The Booneville Police Department reports a total of 28 arrests during the period of April 4-11. Charges placed by the police department during that period include:

Public drunkenness, 8; disturbance, 2; destroying private property, 2; failure to obey an officer, 1; reckless driving, 5; possession of beer, 2; failure to stop for an officer, 1; Making obscene phone calls, 1; simple assault, 1; threatening bodily harm, 1; threatening phone calls, 1; breaking and entering, 1; DUI, 5; running red light, 2; failure to yield right of way, 2; no driver's license, 3; improper turn, 1; and no tail lights, 1.

Linda Pounds of August Circle Apartments reported the theft of an AM-FM stereo on April 9.

Mary A. Lindley of Route 1, Marietta, reported the theft of a purse from her car while the car was parked at the Savings Station on April 9.

Larry South of South Lake Street reported a break-in at his residence on April 11. Items reported stolen included an AM-FM cassette player, 10 cassette tapes, and jewelry.

Ruth Shamburger of Route 7, Booneville, reported her purse was stolen from her car while she was paying for gasoline at Mr. Quik. Approximately \$100 was in the purse.

Sheriff's Arrest Report

The Prentiss County Sheriff's Department reports a total of 16 arrests during the period of April 4-11. Charges placed by the sheriff's department during that period include:

Assault, 1; public drunkenness, 5; destroying church property, 1; threatening to do bodily harm, 1; first degree arson, 2; false pretense, 1; possession of marijuana, 2;

and conspiracy to commit arson, 1.

Audie Shook of Route 6, Booneville, reported the theft of five pair of jeans, an automatic rifle and approximately \$10.

A 1971 Ford pick-up belonging to Mrs. R.J. Stevens of Route 6 Booneville was reported stolen April 8. The vehicle was recovered.

Postal Service Issues Three New Philatelic Items

The United States Postal Service has issued three new philatelic items, available now at the Booneville Post Office, according to Postmaster Jack Wright.

The three items are: a 50-cent stamp pane featuring the bird and flower of each of the 50 United States; the new commemorative Mint Set; and the latest edition of "Stamps and Stories."

The birds and flowers stamps were designed by father-and-son artists Arthur and Alan Singer.

"This is the first time a stamp series has been designed by a father-and-son team," Postmaster Wright said.

A pane of the new stamps includes each of the 50 states, arranged in alphabetical order from the top left corner to the lower right hand corner. With the sale of each pane, the Postal Service will provide a free mini-album (while supplies last).

The 1981 Commemorative and Special Stamps Mint Set features a colorful folder and 41 individual mint stamps. Every commemorative stamp issued in 1981 has been

included with a brief descriptive story.

There are 15 single stamps, four blocks of four, the space achievement block of eight stamps, as well as both the 18-cent and 20-cent James Hoban issues. There are two insert pages included for the display and protection of the 41 stamps.

"Stamps and Stories," an inexpensive guide for stamp collectors, contains listings, current values and illustrations of U.S. philatelic items issued over the years. "Anyone who reads this book will quickly understand why stamp collecting, the world's most popular hobby, is a hobby of a lifetime," Postmaster Wright said.

"I think the new birds and flowers issue will be especially popular," Postmaster Wright said. "I believe residents of the different states will find it exciting to see their state symbols proudly displayed on the mail. Our own state bird, the Mocking Bird, and flower, the Magnolia, are certainly prominent additions to this new issue of stamps."

Phone Co. Combats Graffiti

Combating the problem of graffiti has grown into a nationwide battle - but the Bell System has found a way to fight back.

Graffiti is a problem for telephone companies when their phone booths are targets, since customers tend to avoid the booths that

have been vandalized or defaced by spray paint or marker ink.

Chemical engineers at Western Electric, the

manufacturing and supply unit of the Bell System, have invented a compound that easily strips graffiti from glass, metal and plastic.

Obituaries

WILEY H. RICHARDSON

TALLASSEE, Ala. - Wiley H. Richardson, 85, a former resident of Prentiss County, died April 3 in Tallassee, Ala. Services were held April 5 in Tallassee.

He is survived by his wife, Mrs. Lucille H. Richardson of Tallassee; two daughters, Mrs. Rose Webster of Tallassee and Mrs. Elizabeth Ann Stephens of Garland, Texas; one brother, Rodney Richardson of Fulton; one sister, Mrs. Ezra Ervin of Crawford; five grandchildren and seven great-grandchildren.

MARY SOMMERS CHASE

Mrs. Mary Byce Sommers Chase, 84, of 1604 Taylor St., Corinth, died Monday, April 5, in the Methodist Hospital in Memphis.

Services were Wednesday, April 7, at 1 p.m. at Coleman East Funeral Home Chapel with the Rev. Billy Hutson and the Rev. Clint Wigginton officiating. Burial was in Juliet Cemetery.

Mrs. Chase was a member of the Pentecostal Church. She is survived by six daughters, Mrs. Gladys McGaughy and Mrs. Eunice Lentz, both of Booneville, Mrs. Verlin Fuls, Mrs. Lois Miller and Mrs. Shirley Mitchell, all of Corinth, and Mrs. Hazel Gray of Memphis; two sons, Aaron Chase of Corinth and Shelby Chase of Booneville; 21 grandchildren, 28 great-grandchildren, and six great-great-grandchildren.

Coleman East Funeral Home was in charge of arrangements.

GUY C. WATKINS

Guy C. Watkins, 79, of Holts Spur community in Tishomingo County, died Friday, April 2.

A memorial service was held at Rowland Mills Baptist Church with Bro. Franky Smith and Bro. Odus Harper officiating.

Mr. Watkins was a member of the Rowland Mills Baptist Church and a farmer. He was a veteran of World War II.

He is survived by his wife, Bula Hatcher Wad Watkins; a son, Hershel Wade of Porter, Texas; a daughter, Jo Carolyn Potts of Holts Spur; two grandsons, Darryl and DeWayne Wade, both of Houston, Texas; two granddaughters, Diana Arderer of Houston, Texas, and Suzanne Duvall of Oxford, Miss., and several cousins.

LILBURN D. SMITH

Lilburn D. Smith, 57, of Corinth died Wednesday, April 7, at Baptist Memorial Hospital in Memphis.

Services were Friday, April 9, at 10 a.m. at Coleman East Funeral Home with the Rev. Jimmy Vanderford and the Rev. Dwayne Kirk officiating. Burial was in Lebanon Cemetery.

Mr. Smith was a member of the Pentecostal Church, a retired farmer and barber. He was a veteran of World War II.

He is survived by his wife, Mrs. Lillie Kate (Tootsie) Smith of Corinth; one son, Greg Smith of Corinth; one daughter, Mrs. Aleysa Stearns of Booneville; three brothers, Granville Smith of Grand Junction, Tenn., Marlin Smith and Clyde Smith Jr., both of Corinth; four sisters, Miss Grace Marie Smith of Ripley, Mrs. Ophelia Rogers and Mrs. Lynneeta Kennedy of Corinth and Mrs. Lucille Wilson of Holly Springs and four grandchildren.

Coleman East Funeral Home was in charge of arrangements.

ENOCH WAVA PARKER

Enoch Wava Parker, 66, of Pascagoula, died unexpectedly at his residence Tuesday, April 6.

Services were Thursday, April 8, with Bro. Robert Spicer, Bro. Steve Knight of Pascagoula, and Bro. Tom Bowen of Metter, Ga., officiating.

Mr. Parker was a former resident of the Blackland community.

He is survived by his wife, Mary Parker; a daughter, Dorothy Storey Mayo; two sisters, Mrs. Oren Richey and Mrs. Ophelia Speck of Blue Springs; two grandchildren and three great-grandchildren.

Holden-Wells Funeral Home of Moss Point was in charge of arrangements.

JOHN LYLE SPARKS

John Lyle Sparks, 56, of 3491 Kensett Dr., Memphis, died unexpectedly Sunday, April 11, at St. Frances Hospital in Memphis.

Services were Tuesday, April 13, at 2 p.m. at McMillan Funeral Home Chapel with Bro. Luther Basse officiating. Burial was in Booneville Cemetery.

Mr. Sparks was a Baptist and a retired accountant. He was a veteran of World War II.

He is survived by his wife, Mrs. Maxine Harper Sparks; three sons, Jerry Lyle Sparks and Eric Wayne Sparks, both of Memphis, and John Edwin Sparks of New Orleans, La.; a daughter, Miss Patricia Ann Saparks of Coffeeville, Miss.; two sisters, Mrs. Amos Melton and Mrs. Eugene Fraser, both of Booneville; and three grandchildren.

McMillan Funeral Home was in charge of arrangements.

CLOVIS E. STOKES

Clovis E. Stokes, 86, of Booneville, died Sunday, April 11, at the Baptist Memorial Hospital in Booneville following an extended illness.

Services were Tuesday, April 13, at 11 a.m. at McMillan Funeral Home. Burial was in Mt. Pleasant Cemetery.

Mr. Stokes was a Baptist and a retired employee of Prentiss County.

He is survived by two sons, Travis Stokes of Booneville and Freeman Stokes of Moss Point, Miss.; four daughters, Marie Hurt, Betty Sue Childers and Maxine McAnally, all of Booneville, and Louise Calley of Marietta; 16 grandchildren and 19 great-grandchildren.

McMillan Funeral Home was in charge of arrangements.

CLIFFORD H. JAMES

Clifford H. James, 57, of Palestine, Texas, died Wednesday, April 7, in the Anderson County Memorial Hospital in Palestine following an extended illness.

Services were Saturday, April 10, at 2 p.m. at McMillan Funeral Home Chapel. Burial was in Booneville Cemetery.

Mr. James was a self-employed truck driver and a veteran of World War II.

He is survived by his wife, Mrs. Virginia Ricketts James; his mother, Mrs. Pearl James of Corinth; a son, William Lynn James of Palestine, Texas; four brothers, George F. James of Garland, Texas, Warner James of Daingerfield, Texas, Jimmie James of Granite City, Ill., and Charles James of Pontotoc, Miss.; three sisters, Verneal Turner of Rienzi, Helen Sellers of Corinth, and Fay King of Tupelo; and a nephew, Steve James of Houston, Texas.

McMillan Funeral Home was in charge of arrangements.

Campus Cutie



Cindy Worley

This week's campus cutie is Cindy Worley, daughter of Mr. and Mrs. James Worley. Cindy, who has brown hair and green eyes, is a sophomore at Wheeler High School and plans to attend Northeast Mississippi Junior College majoring in accounting. Her hobbies are softball, bike riding and sunbathing; her favorite entertainers are Michael Jackson, Joan Jett, and Robert Redford; her favorite color is purple and when asked about her pet peeve, she said, "I don't like people who think they are always right." (Photo by Lee Gentry)

BIBLE QUESTION BOX

QUESTION: Mr. Hogland, what does that word implacable mean as it is used in Rom. 1:31?



WARD HOGLAND

ANSWER: Paul in Rom 1:31, is talking about the sins of the gentiles and says, "Without understanding, covenant-breakers, with natural affection, implacable, unmerciful." This word "implacable" is also used in 2 Tim. 3:3, and is translated by the NASV as "irreconcilable" and by the KJV as "trucebreakers." It comes from the Greek ASPONDOS meaning implacable or irreconcilable. Thayer tells us that it refers to one who cannot be persuaded to enter into a covenant. The idea seems to be of one person coming to another in order to sign a truce and the implacable individual will not receive him. It seems that nothing can be done to bring about a reconciliation. In the context the gentiles "refused to have God in their knowledge." God has sent his son in the world to live and die for our sins. This is how he has come to us in order to bring about a reconciliation. When we refuse to obey his gospel we are implacable. We turn down the offer of God. We bring on ourselves just condemnation. We should think seriously about our refusal to obey the gospel of our Lord. It is God's power to save (Rom. 1:16). After all, God has given all of us the power of choice.

WEST BOONEVILLE CHURCH OF CHRIST
BOX 15 - HWY. 4, WEST - BOONEVILLE, MISS.

IF DEPENDENT INSURANCE IS COSTING YOU TOO MUCH, CALL US, WE CAN HELP YOU!

Crawford Insurance Service Welcomes W. L. Potts To Its Agency



W. L. HAS HAD 5 YEARS EXPERIENCE IN THE INSURANCE BUSINESS.

WE HAVE A MILLION DOLLAR MAJOR MEDICAL POLICY TO OFFER AT A REASONABLE RATE. WE CAN INSURE CHILDREN WITHOUT PARENT. CALL US FOR FREE INFORMATION ON COST AND BENEFITS.

WE ALSO OFFER INSURANCE FOR CARS, HOME OWNERS, FIRE, LONG HAUL TRUCKS, FARM EQUIPMENT, COMMERCIAL PROPERTY LOCATED INSIDE AND OUTSIDE THE CITY.

Crawford Insurance Service
Highway 45 South
Booneville, Miss. - Phone 728-4435
Nell Crawford - Owner



LOCAL GIRLS IN "ALICE" - Angela Burcham (left) and Stacey Pollard of Booneville will appear in Corinth Theatre-Arts' children's production of Lewis Carroll's "Alice in Wonderland." Angela plays the part of a footman, a messenger for the Queen and Stacey is cast in the title role of Alice. Performances will be April 16 and 17 at 7 p.m. and April 18 at 2 p.m. at the Crossroads Playhouse in Corinth.

Two Local Girls To Appear In 'Alice In Wonderland'

Two Booneville girls have had first-hand experience in what it's like to be in "Wonderland."

Stacey Pollard and Angela Burcham, both 11-years-old, will be featured in Corinth Theatre Arts' production of Lewis Carroll's "Alice in Wonderland" on April 16 and 17 at 7 p.m. and April 18 at 2 p.m. at Crossroads Playhouse.

Stacey, the daughter of Dwayne and Betty Pollard, is cast in the title role of Alice.

Angela, the daughter of Benny L. and Beverly Burcham, plays a footman.

Both girls are students at Booneville Middle School. Appearing in CT-A productions is nothing new for the girls. Both appeared in "The Hobbit" and Stacey has also appeared in "Oliver."

The girls said the rehearsals are "just like you're in that dream." They said the animal characters of a White Rabbit, a Cheshire Cat, a March Hare, and a Blue Caterpillar seem so realistic during rehearsal they sometimes forget there are people in the costumes.

The cast of "Alice" includes 41 children and

three adults.

The parents of the cast members have been helping with the production. Angela's mother worked on set construction and painting as did Stacey's parents. The mothers were also responsible for making the costumes.

"The production is going just beautifully," said Ramond Burgin, CT-A director. "I'm very happy with the cast. They have done wonderful work. The show is actually ahead of schedule."

Burgin praised the ability of the young Booneville

performers.

"Angela is very talented, competent and charming," he said.

"Stacey is very serious about wanting to be a professional actress. I direct her exactly the way I would a professional adult. She's entirely professional in her attitude and very good," Burgin said.

Performances of "Alice in Wonderland" will be this Friday and Saturday at 7 p.m. and Sunday at 2 p.m.

Reservations should be made by calling 287-2995 from 1 p.m. until 5 p.m.

Northeast Gym To Get New Roof

Reroofing the college gymnasium was one of the items approved by the Northeast Mississippi Junior College Board of Trustees at their regular monthly meeting Tuesday afternoon.

The Building and Grounds Committee recommended to the board that the gymnasium be reroofed,

according to NE President Harold T. White, and the board voted to advertise for bids on the project.

The committee also recommended the disposal of the alternate heating system of propane tanks on campus. The board okayed the proposal. "We consider the propane tanks to be obsolete to our needs now,"

White said.

In other business the board accepted bids on numerous items for school supplies which included respiratory therapy equipment, practical nursing equipment, and roofing materials for buildings.

The board also voted to advertise for bids on school supplies, including such items as printing the student handbook, printing housing forms, supplemental band uniforms, and additional band equipment.

The board rejected all bids received for a security alarm system for the

business office and voted to readvertise the project.

"We weren't satisfied with the information we had available and felt it would be in the best interest of the college to develop new specifications and readvertise," White said.

At the beginning of the board meeting, Dr. George Moody, a member of the committee for the division of Mississippi junior colleges, spoke to the board concerning the responsibility of various facets of the junior college program such as the junior college committee and the division of junior colleges.

Upon Retirement

Henson Notes Many Changes

Retirement is something most people look forward to as they near 60, but few people of any age retire twice within one year.

Junior W. Henson of 305 Williams Street, Booneville, is one of those rare people who has celebrated two retirements within the past 12 months.

On April 30, 1981, Henson retired from the Northeast Mississippi Hospital's Board of Trustees after 20 years. And Jan. 31, 1982, he retired from his position as bridge inspector with the Mississippi State Highway Department.

"When I started with the highway department in 1948, Highway 45 and about four miles of Highway 30 East were the only paved roads in Prentiss County," Henson said. "But now, when they finish paving the seven miles from Altitude to Cairo, every state-maintained road in the county will be paved."

"When I started with the Highway Department, I was an equipment operator, but we had very little equipment. If you were late for work you wound up 'operating' a pick or shovel," he said.

Henson served under three highway commissioners in his 30 years with the department. Roy Adams was commissioner in 1948, and was succeeded by Hershel Jumper. Henson was serving under Commissioner Bobby Richardson when he retired earlier this year.

"When I started in 1948, we worked nine hours a day and half-a-day on Saturday for \$110 per month," Henson said. "We had no social security, no retirement, no vacation or sick leave. But conditions and benefits have improved a lot over the years."

Henson said there have also been many changes at the Northeast Mississippi Hospital since he was first named to the board of trustees 20 years ago. The D2 wing has been added, cardiac care and intensive care units were renovated, emergency room and physical therapy facilities were built, several plots of adjoining property were bought for future expansion, and an obstetrics ward was opened. And all of this was paid for with money saved from hospital funds, Henson said.

The greatest changes at the hospital were brought about by the involvement of the federal government in health care according to Henson.

"When I started, we met

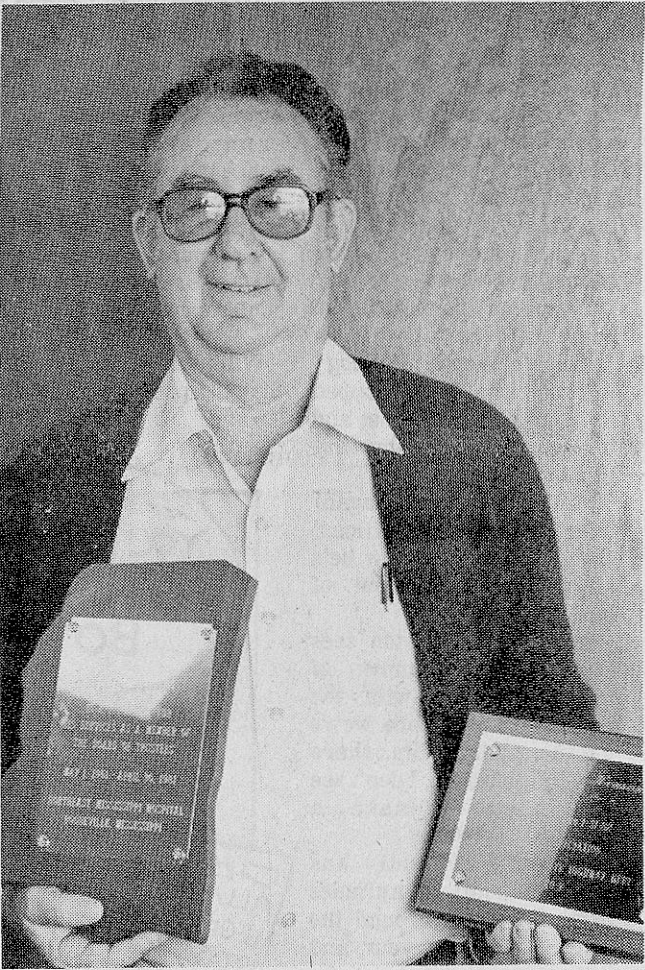
in the admistrator's office and the meetings lasted about an hour," he said. "But after medicare and medicaid came along, the meetings usually lasted until after midnight."

Henson was honored at both of his retirements with the presentation of engraved plaques. And one of his proudest possessions is a scroll signed by some 200 hospital employees expressing appreciation for his service on the board.

"I wouldn't change a thing if I had it to do over," he said. "I have enjoyed my time with the highway department and the hospital board. I have worked hard to make things better for the people of Prentiss County and the hospital employees, and I would do it all again."

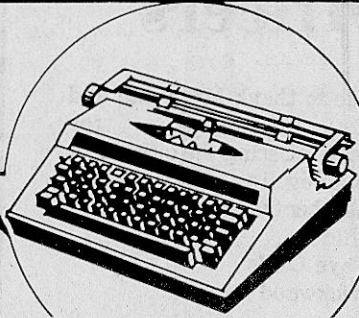
He said the hospital's affiliation with Baptist Memorial could be good for the local hospital and Prentiss County.

"It does not have to be sold to the people. They know how strong Baptist is and they know many small hospitals are having problems. I think Baptist Memorial is one of the best hospitals in the country and we are lucky to have such close ties with it," he said.



DOUBLE RETIREMENT--Junior W. Henson of Booneville displays two plaques presented to him when he retired from the Mississippi Highway Department and as a member of the Board of Trustees of the Northeast Mississippi Hospital.

Prentiss County FBLA



PERSONAL Typewriting Service

Typewriting done by Vocational Business students at the Prentiss County Vocational School

- ✓ Wills
- ✓ Family Trees
- ✓ Term Papers
- ✓ Book Reports
- ✓ Personal Letters
- ✓ Envelopes
- ✓ Address Labels
- ✓ Business Letters and Papers
- ✓ Bibliographies
- ✓ Essays
- ✓ Research Papers
- ✓ Applications
- ✓ Resumes
- ✓ Financial Statements

Prices As Low As
\$1.00 per page

Copy Service Is Also Available.

PRENTISS COUNTY Vocational School

Booneville, Mississippi

Call 728-9259 or 728-3915

A
SALUTE
TO
INDUSTRY



SENSATIONAL Store-Wide Sale

FINAL 3 DAYS

THURSDAY, FRIDAY & SATURDAY ONLY

LIVING ROOM!

\$895.00 velvet sofa by Broyhill Regency. Attached pillow back, blue with antique white and gold.

\$299⁰⁰

\$1095.00 Herculon sofa and love seat by Brookwood, 1/2 Price. BOTH

\$547⁰⁰

\$995.00 Early American nylon sofa, love seat and chair by Livingston, ALL 3

\$647⁰⁰

MANY SOFAS, LOVE SEATS, CHAIRS & OT. TOMANS, LESS THAN WHOLESALE PRICE!

RECLINERS!

SAVE \$50 to \$200 on all recliners. Prices start at

\$99⁹⁵

BEDROOM!

\$995.00 Broyhill 4-piece bedroom suite in rich oak finish. Includes dresser, mirror, chest & bed, night stands optional, extra.

\$577⁰⁰

\$895.00 Broyhill 4-piece group includes dresser, mirror, chest, bed. Honey maple.

\$547⁰⁰

30 BEDROOM SUITES TO CHOOSE FROM. PRICES START AT.....

\$249⁰⁰

FOR 4-PC. SUITE

Large Group Of CHAIRS Covered in velvet, Herculon and nylon.

1/2 Price

MATTRESS SETS!

Medico
Pedic
Extra Firm

1/2-Price

Several Sets Of
BEDDING

At
1/2 Price

TABLES!

Odd end tables
and coffee tables.

1/2 Price

Large group of living room tables by Bassett, Broyhill, Riverside, Lane and many others.

1/3 Off

SOFA TABLES
AT BIG DISCOUNTS

\$399.00 set of Bassett tables, 2 end tables and one coffee table. Nice contemporary set.

\$187⁰⁰

SAVE
20-60%
ON ENTIRE STOCK
30, 60, 90 DAYS
SAME AS CASH

SLEEPERS!

\$599.00 Full Size
SLEEPER SOFA
\$249⁰⁰

Large selection of regular and queen size sleepers.

1/3 Off

Some sleepers with chairs and love seats to match. Big Discounts.

KIDS BEDS!

\$449.00 Captain's bed, complete with bedding.

\$249⁰⁰

Large Group Of BETTER LAMPS

\$29⁹⁵

DINETTES!

\$299.00 7-pc. dinette by Gate City

\$157⁰⁰

DINING ROOM!

\$1695 8-pc. dining room suite by Bassett complete with lighted China cabinet.

\$1147⁰⁰

DESKS! CHESTS!

\$349.00 5-drawer pecan desk with file drawer.

\$199⁰⁰

Select from Pecan, Maple, and Pine.

FANTASTIC!
Schweiger Traditional Groups
Many covers to choose from. Florals, stripes, solids. Choice of colors.
Reg. \$1495.00
\$895⁰⁰



UNITED FURNITURE COMPANY

Highway 45 North
Booneville, Miss.
Phone: 728-9626

Opinion

Local Comments, Letters, Editorials

'Talk O' The Town'

Street Opinion Poll

QUESTION: Do you think South Central Bell is justified in asking the Public Service Commission to approve a rate increase for local telephone service?

ROBERT L. GROOMS SR. of Route 5, Booneville: "I surely do not. It's outrageous. Prices are high enough now and the service isn't getting any better."

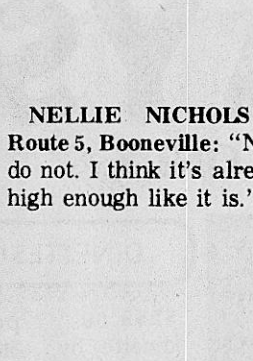


OLEDA FAIR of Route 4, Booneville: "No. I don't think they should because our minimum wage is lower than what they keep raising their price to. Everything is going up higher except what we're getting paid. A lot of people will have their phones taken out because they can't afford them"

MARJORIE CHITTON of Route 4, Booneville: "No. I think we're paying too much as it is. I live out in the county and I'm paying \$22 for two phones on a private line whether I use them or not. I think that's high."



FRANCES ADAMS of Route 4, Booneville: "No. We pay too much now. I think they need a better system because you get phone calls charged on your bill that you didn't make."



NELLIE NICHOLS of Route 5, Booneville: "No, I do not. I think it's already high enough like it is."



ADA CHRISTIAN of Chambers Drive, Booneville: "No, I do not. I think for the services we're getting now that we're already paying enough. I don't think we should pay any more. It's terrible."



(Editor's note: "Talk O' The Town" is not intended as a scientific poll of public opinion. Rather, it is simply intended to give Prentiss Countians an opportunity to voice their opinions on particular issues and topics. Maybe we'll ask you next!)

Reflections

By Ken Christian

Editor

WHAT THE PEOPLE DON'T KNOW WILL HURT THEM!

It's no secret that you can look at practically any list which ranks the states in terms of family income, education or other similar subjects and find the state of Mississippi either on or very near the bottom of that list. Does this mean that we Mississippians just can't measure up to people in the other states? Are we less capable of earning a decent salary? Or of grasping a better education? Or whatever?

No! What it means is that we, as Mississippians, have not been given the opportunities to better ourselves so that we can earn the higher wages . . . Or get the better education . . . Or take advantage of many other things our modern society has to offer!

The reason we don't have these opportunities, I feel, is due entirely to the way our elected officials have molded our state and our communities to conform to their own special interests while at the same time in many cases

totally ignoring what is best for the people as a whole. How do they get away with it? By not letting the people know what they are doing...by conducting the peoples' business behind closed doors.

IT HAS ALMOST become standard operating procedure in Mississippi for politicians - once they are elected to office - to almost totally ignore their responsibilities and duties to the people they were elected to serve; that is, except during election years.

Once in office most politicians become interested in only two things: getting re-elected and perpetuating their party or some other special interest group which helped to get them elected in the first place. They seem to forget that they were elected to serve ALL the people, not just a selected few of their own choosing.

Many politicians seem to feel that once elected they can run the government - be it city, county, or state - however they see fit and that they have to answer to no one.

Eyes On Mississippi

Key Contest Is Shaping Up In Fourth District

By BILL MINOR
Columnist

JACKSON, Miss. - The Wayne Dowdy-Liles Williams rematch in Mississippi's Fourth Congressional district is evidently being viewed nationally as a key test of whether or not President Reagan is going to be able to hold on to, or improve, his working majority in Congress.

Two national newspaper syndicates, the Gannett newspapers and the Chicago Tribune, have already picked the Dowdy-Williams race as their target contest in the South for this year's Congressional races, which probably means others will do the same.

Based on last summer's special election contest between Democrat Dowdy and Republican Williams, the rerun should be a classic matchup of Reaganomics against the economic uncertainty it has produced.

Not only will it be Williams, the guy who gripped Reagan's coattails last year with everything, including his teeth, (according to one crackerbarrel pundit), but it will be Dowdy, the guy who voted against Reagan's tax cuts, when some of his Mississippi Democratic

colleagues didn't.

The national observers who zero in on the Dowdy-Williams race may not understand the crazy third factor, the "black independent" which gets involved in Mississippi's political races, preventing a head-on clash between the Democratic and Republican standard-bearers, very often, costing the Democrat the race. Dowdy may well have to not only whip Williams, but a black independent, possibly Charles Evers, as well.

At the moment, the political signs are good for Dowdy, whose 912 vote win over Williams last June was a tremendous upset in the face of Williams vastly superior financing from GOP sources, the personal prestige of Reagan and a virtual lock that the GOP seemed to have on the district.

Dowdy has worked the district hard, holding together his tricky black-labor coalition, and, significantly, gaining ground among older whites who have become frightened by the Reagan programs. His people also say the mail is reflecting a new group of folks unhappy with Reagan over cuts in student aid and elimination of school age benefits under Social

Security.

Last summer, the Mississippi Homebuilders Association had endorsed Williams and given him money from their PAC without even considering Dowdy or any of the other Democrats in the Fourth District race. Since, then, the Homebuilders have done a complete about-face, given Dowdy a 100 percent rating, including his vote against the tax cuts, and are now putting money in his campaign.

Typical of the shift in the homebuilders' attitude is Jackson's Lloyd "Bulldog" Burton, who has dropped Reagan and Williams and become a rip-snorting supporter of Dowdy.

"I liked the man (Reagan) when he went in office," says Burton, "but now he's about to put me out of business."

The colorful Burton sees Dowdy as a champion of folks struggling with the economy, and "since we've got somebody up there who'll fight for us, I don't see any need to make a change."

Williams evidently has seen the shift in attitudes toward Reagan around the district since last year, and he is now trying to put some distance between himself and the president.

In sharp contrast with last summer when he was saying that a vote for him was a vote for Reagan in Congress, Williams is now saying, only when asked, that he "disagrees" with Reagan on certain issues. When he sent out his letter recently to supporters prior to his formal announcement as a candidate, Williams noticeably did not mention Reagan's name once. Neither did he mention it in his prepared statements at his series of news conferences.

Williams is saying now that the president is not an "issue" in the Fourth

District race, that the only issue is who can better serve the district. That is reminiscent of Democrats who used to say the same thing about Democratic presidents who were not popular back in Mississippi.

All of the other four incumbents in the Congressional delegation seem to be safe, provided, of course, that the final redistricting plan doesn't pit two of them against each other.

Even Cong. G.V. Sonny Montgomery, a leading member of the Boll Weevils who helped Reagan pass his program last year, seems to be putting some distance

between himself and the president now. Montgomery, a longtime hawk, is even saying that Reagan is going too far on defense spending and he has been critical of the Reagan deficits.

No recent polls have been taken on how Reagan stands in a state he narrowly carried in 1980, but all of the indicators here point downward.

Certainly there seems to be no political mileage now in embracing his programs, which probably says the flirtation of many Mississippians with hard-line conservatism advocated for years by Reagan is over.



Letters

Thanks To Police Officers

Dear Editor,

I would like to thank two police officers, Dean South and Sam McGee, for patrolling Cherokee Park and Wickwood Drive as much as they have been lately.

My husband would also like to thank Mr. South especially for patrolling factory parking lots in the daytime.

These two officers are the only two officers we see in this area. Again, we would

like to thank Mr. South and Mr. McGee for remembering the citizens of Booneville, plus Chief Lambert for having two fine officers.

Faye Carls
Wickwood Dr.

Ponderings

By Angela Smith

Staff Reporter

An Old Phony

Last night I dreamed Alexander Graham Bell phoned long distance from that great telephone booth in the sky. He told me he was concerned about the possibility of local telephone rates going up. Although he didn't have a solution to the possible rate increase he did say this:

If my life I could live again
I would improve the world of slumber...
For I'd invent a phone that would not ring
If it was a wrong number!

A Fish Tale

Nobody can fish like I can.
Although I have never made the cover of "Field & Stream," I am positive I'm just about the number one catfish catcher in Northeast Mississippi.

It has taken many hours to refine, but at last I have devised a sure-fire catfishing technique.

The most important item for the up and coming fisherman is the selection of a sturdy rod 'n reel. It must be capable of holding that granddaddy catfish and all the

trees, dead limbs, and turtles caught.

A professional looking fisherman must remain composed. Nothing is more embarrassing than to see a fisherman standing on a pond bank under pine trees, casting his hook out in the water only to discover he caught the line in an overhead branch.

Sometimes it's possible to jerk the hook out of the tree without breaking the line. Sometimes it isn't. Just remember...it is extremely undignified to cry in these circumstances...even if you forgot to bring any more hooks with you. Besides, loud boo-hooing will scare the fish away.

There are lots of baits available. I prefer worms. I don't really prefer worms, but they are readily abundant behind our barn and I'm cheap.

Never fish alone when using worms as bait. Be as selective in fishing partners as when choosing bait. The ideal fishing partner is one who is not bothered by baiting someone else's hook.

If all the good fishing partners are taken, just close your eyes and bait your own hook.

After successfully casting out the fishing line the action

begins. The first bite I get is usually from a mosquito. But before you know it, or in two hours, whichever comes first - there will be a jerk on the ole fishing line.

There are two options available as you begin to reel in the catfish.

First, if up until this time you have remembered to remain cool and sophisticated, continue to act nonchalant while reeling in the fish. After getting the fish out, and it's bragging size, simply act smug.

Or secondly, (this is the technique I prefer) jump up and down, holler and yell that it's going to take at least three people to get the fish out.

There can be a drawback to that procedure if you really put on a big show and only yank out a teeny-tiny bream.

If this happens, merely laugh and say to your companion, whose own reel has been dragged into the middle of the lake by a really big fish, "I really had you going, didn't I?"

It's a good idea to know how to swim, because you may find yourself eye to eye with the fish still in the pond.

After catching the fish, the next task is removing the hook. The easiest way to do this is have someone else do it.

Now comes the worst part. You've caught a mess of fish and they have to be cleaned. They don't call fish a mess for nothing.

However, cleaning fish is relatively easy when made into a family project. Pop can clean the fish and Mom can cook them.

Like I said, nobody can fish like I can!

Court Square Ponderings

"Experience is the ability to recognize a mistake when you make it again."

Banner-Independent

(USPS041400)

210 Main St. Telephone 728-6214
Booneville, Miss. 38829

Since 1898

"What The People Don't Know
WILL Hurt Them"

Paul Miller, President and Publisher

SUBSCRIPTION RATES
PRENTISS AND ADJOINING COUNTIES

1 Year . . . \$9.00 2 Years . . . \$17.00

OUTSIDE ABOVE AREA

6 Months . . . \$8.00 1 Year . . . \$11.00 2 Years . . . \$20.00

Published weekly (each Thursday) at 210 Main St. Booneville, MS 38829.
Second class postage paid at Booneville, MS.

Copyright 1982, Booneville Newspapers, Inc.

(Postmaster: Send address changes to:
Banner-Independent, P. O. Box 269, Booneville, MS 38829)

This Ad
Good Thru
APRIL 21,
1982



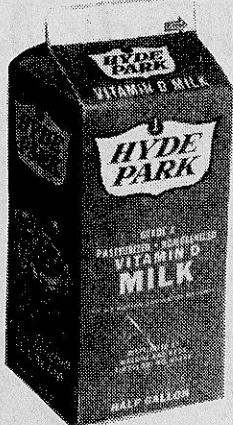
WALDEN-ROWLAND

910 EAST CHURCH STREET
BOONEVILLE, MISS.

HOME OF
QUALITY STAMPS

WE GLADLY ACCEPT U.S.
GOVERNMENT FOOD
COUPONS

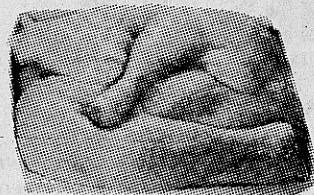
HOME-OWNED
HOME-OPERATED
QUANTITY RIGHTS RESERVED



HYDE PARK
MILK
1/2 GAL. \$1.09

USDA CHOICE GRADE A
FAMILY PACK

Leg Quarters



POUND

59¢

PAM GARRETT

WINNER OF "GIANT" EASTER BUNNY STOCKING

SOUTHERN BELLE

Wieners

12-OZ. PKG.



97¢

Quality Controlled Fresh

Ground Beef

3-lbs.
or
more
lb.

\$1.17



HYDE PARK
Sliced Bologna 12-oz. pkg. \$1.29

FRESH
Frozen Whiting 3-lb. box \$1.99

FRESH
Pork Neckbones lb. 49¢

FRESH
Pork Liver lb. 39¢



KRAFT
PARKAY
QUARTERS

2 16 OZ. PKGS. 89¢

HYDE PARK



POT PIES

BEEF CHICKEN OR TURKEY

3 8 OZ. PKGS. \$1



PILLSBURY
FLOUR

PLAIN OR
SELF-RISING

5 LB. BAG

LIMIT 2

69¢

SHORTENING

RICHTEX
42 OZ.



99¢

LIMIT 1

KRAFT
Whipped Parkay 2 bowls 16 oz. 89¢

MOUNTAIN MAN
Biscuits 5 CT. CANS 5/\$1.00

American Cheese 1/2 lb. \$1.39

PILLSBURY
Crescent Rolls 8 oz. 79¢

— HEALTH & BEAUTY AIDS —

AQUA FRESH
Toothpaste 6.4 OZ. now \$1.39 REG. \$2.05

Listerine 12 OZ. now \$1.85 REG. \$2.55

Bufferin 100 CT. now \$2.59 REG. \$4.19

EMBERS
Charcoal 10-lb. bag \$1.39

TRAIL BLAZER
Dog Food 25 lbs. \$3.49

HYDE PARK
Macaroni & Cheese 7 1/4-OZ. BOX 3/89¢

Ivory Liquid 22-oz. size \$1.27

APPLE, PEACH
Banquet Pies 20 oz. 89¢

GREEN GIANT
Broccoli Spears 10 oz. 99¢

GREEN GIANT WITH CHEESE SAUCE
Broccoli Spears 10 oz. 99¢

GREEN GIANT NIBBLERS
Corn-On-Cob 6 ct. 99¢

BOOTH
Flounder 16 oz. \$2.49

HYDE PARK
Orange Juice 12-oz. can 79¢

OCEAN SPRAY
Pink Grapefruit Juice 48 oz. \$1.69

NESTLES
Cookie Mix CHOCOLATE CHIP \$1.59

Martha White Meal 5-lb. bag 97¢

Hunt's Tomatoes 14-oz. can 59¢

USDA CHOICE BONELESS
CHUCK ROAST
LB. \$1.49

WILLIAM NO SUGAR
Pork Sausage lb. \$1.49

FRESH CUT FAMILY PACK
Boneless Beef Stew lb. \$1.69

BONELESS
Chuck Steak USDA CHOICE lb. \$1.79

USDA CHOICE
Rib Steak FINE FOR COOKOUTS lb. \$2.69

USDA CHOICE BONELESS
Shoulder Roast lb. \$1.69

GRADE A
Split Fryers lb. 69¢

FRYER GRADE A
Breast Quarters lb. 69¢

HYDE PARK
Sliced Bacon lb. \$1.59

COUNTRY SKILLET
Chicken Livers 8-oz. pkg. 39¢

CRISCO OIL
48-OZ. SIZE
\$1.99
LIMIT 1

BRYAN
Potted Meat 3 oz. 4/\$1.00

BRYAN
Lunch Meat 12 oz. \$1.49

DUNCAN HINES
Cake Mix 18 1/2 oz. 89¢

KRAFT
1000 Island Dressing 16 oz. \$1.49

SWEET SUE
Chix & Dumplings 24 oz. 99¢

Starkist Tuna 6 1/2-oz. can 98¢

Wonder Bread 24-oz. loaf 89¢

Del Monte Catsup 32 oz. \$1.19

TRELLE
Sweet Peas 16-OZ. CAN 3/\$1.00

SHOWBOAT
Pork 'N' Beans 14 1/2-OZ. CAN 3/\$1.09

DOUBLE LUCK
Green Beans 16-OZ. CAN 3/\$1.00

ROYAL
Tea Bags 100 ct. \$1.35

FRESH
SWEET YELLOW
CORN
5 ears 99¢

BAG
Red Apples 3-lb. bag \$1.19

BAG
Red Grapefruit 5 lbs. \$1.39

Sweet Potatoes 3 lbs \$1.00

FRESH CRISP
Celery Stalk each 39¢

US #1 Red
Potatoes
\$1.29
10-lb. Bag

HYDE PARK
CRINKLE CUT
FROZEN
POTATOES
32 OZ. BAG
99¢

ALL FLAVORS
KRAFT
BBQ
SAUCE
18 OZ. BTLE.
69¢

KRAFT
AMERICAN
CHEESE
SINGLES
12-oz. pkg.
\$1.69

MR. P'S
PIZZA
11 OZ.
89¢

Banner-Independent

Society News

Church, Family, Clubs



GOVERNOR'S WIFE VISITS - The Booneville B&PW club was the host club for a joint meeting with the Pilot Club held last month in the Mississippi Room at Northeast Mississippi Junior College. Mrs. William Winter, guest speaker, talked about her role as First Lady and shared with the group some of the many problems that confront the Governor's family in everyday living. Nancy Floyd also entertained with a program of song and ballet. Barbara McCoy was program chairman; decorations were by Helen Jones, Betty Shackelford and Jane Morrow. Pictured with Mrs. Winter (center) are Robble McDaniel, Pilot Club president (left), and Dot Worley, B&PW president.

Blackland News

By MRS. L.L. McALPIN
Correspondent

Greg and Peggy Geno were in Nettleton Sunday for lunch with Mr. and Mrs. Ben Coggins Jr.

Lisa Griffin of Booneville spent the weekend with Michelle Clement.

Alan and Brent Wilson of Wheeler spent their spring holidays with their grandparents, Mr. and Mrs. Russell Hill.

Mrs. Carolyn Tibbs and children of Oxford were recent guests of Mr. and Mrs. Harold Finger.

Mr. and Mrs. Bonard Eaton and family of Biggersville were Sunday guests of Mr. and Mrs. Flake Eaton. Family members of the community were all present to enjoy a delicious meal. Bonard has been a patient of the Corinth Hospital and re-entered Monday for further tests. Family and friends are wishing him a speedy recovery.

Mrs. Barbara Kelly and Amy were in Memphis last week for Amy's routine check-up at the LeBonheur Children's Hospital. Amy is doing well.

Mr. and Mrs. L.L. McAlpin shopped in Columbus last Wednesday. The Rev. and Mrs. Bill Garrison and Mr. and Mrs. Carol Hudson were Sunday visitors of Mr. and Mrs. Gene Frederick and family. Other guests were the Jerry Kellys of the community.

Monday luncheon guests of Mr. and Mrs. John Wilson were Mr. and Mrs. Earl Demonbreun, Melissa and Michael, Mr. and Mrs. B. Summey, Laura, Michelle, and Mark all of Chicago, Ill., and Clay and Craig Koon of the Community.

Christi and Barry Rowland enjoyed their spring holidays with their grandparents, Mr. and Mrs. Roy Hodges of Dumas.

Charles Chism and Dustin was visiting Saturday afternoon with Mr. and Mrs. Jessie Chism of Kirkville. Mackie McAlpin spent part of last week in Memphis with Jill McAlpin and Pam Mauney.

Easter guests of Mrs. R.H. Kelly and Miss Ann Kelly were Mr. and Mrs. William Anderson and Mike of New Orleans, La. Family members of the community brought a basket lunch and enjoyed the day together.

Mrs. Ethel Tucker had Sunday lunch with Mr. and Mrs. Brown McCutchens of Pisgah.

The Barry Yearbers of Booneville spent Saturday with Mr. and Mrs. Claude Trantham.

Robin and Terri Floyd

spent Wednesday through Friday with Mr. and Mrs. Eddie Shook of Booneville. Saturday guests of Mr. and Mrs. Russell Hill were Mr. and Mrs. Willie Browning of Franktown, the former Christine Parker of Atlanta, Ga., Mrs. Bessie Arnold and Mrs. Vance Garner of Wheeler.

Mrs. Archie Saylor, Mrs. Pauline Geno, and Mr. and Ms. Charles Geno spent Sunday in Amory. They attended the special Easter program "Alive" by Joe E. Parks at the First United Methodist Church. Rev. Crawford Ray served as narrator. The choir consisted of thirty voices which included Anita and Angie Deaton, Kerry and Libby Saylor.

Mr. and Mrs. Bill Kinard, Beth and Russell Reed of Memphis were down for a relaxing weekend.

Mr. and Mrs. Kenneth Stephenson of Booneville were Thursday dinner guests of Mrs. Gasy Weeks.

Mr. and Mrs. L.L. McAlpin and Jill attended the funeral of Lelia Box Mauney Sunday afternoon at the Lebanon Baptist Church in Tippah County. Amy Kelly was an overnight guest Monday of Jody McKinney of Booneville.

Mr. and Mrs. James Trantham and Joe motored to Osceola, Ark., Thursday for the Easter holidays. They were guests of Mr. and Mrs. Terry Gibson and Courtney Susan and other relatives. They were entertained with a fish fry and a barbecue. Mrs. Trantham's father, who is in a nursing home, was able to visit with the family. They attended Easter services and enjoyed watching Courtney Susan participate in an Easter egg hunt.

Jill McAlpin of Memphis was home for Easter with the L.L. McAlpins.

Mr. and Mrs. Layne Dees and Kent went to Louisville for the weekend with the Rev. and Mrs. Danny Rowland and Marla.

Mrs. Leonard Graham celebrated Easter by having her immediate family for lunch. Those present were Mrs. Barbara Vandervander of Burnsville, who spent the night, Mr. and Mrs. Ken Hunter and Melissa, Donna McCoy and Kevin, Mancel Searcy, all of Corinth, Phyllis Colson and David Graham of Booneville, and other relatives of the community.

College students home for the Easter holidays were Kathy Ballard and Tim Rowland of the University of Northern Alabama at

Florence, and Jim Worley of Mississippi State University.

The UMW of the Christ United Methodist Church met Monday night in the fellowship hall. Mrs. Syble Dees and Mrs. Eula Davis presented an impressive Easter program. Refreshments were served by Mrs. Dianne Hodges and Mrs. Eula Davis.

Mrs. Zana Floyd spent the weekend with Mr. and Mrs. Herbert Guin of Tupelo.

The Lamb Chapel Baptist Church of Jumpertown presented an Easter program Sunday evening at the Oak Hill Baptist Church. The congregation was very complimentary of the program.

Friends regretted to hear the sad news of the sudden death of Wavey Parker of Pascagoula this past week. Wavey and Mary made frequent visits since they moved to the coast. Their many friends extends deepest sympathy.

Jack Tubbs, who died Thursday in Jackson, has many friends in our county who recall his education ideals he exemplified. He had a great love for the people of Mississippi.

Mr. and Mrs. Max Wilson of Wheeler were Friday dinner guests of Mr. and Mrs. R.B. Hill.

Miss Bolton Weds Mr. Nobles

SOUTHAVEN -- Miss Beverly Gale Bolton became the bride of Melvin Alfred Nobles Jr. in an evening ceremony Saturday, Nov. 21, at the Southaven Church of Christ.

The bride is the daughter of Mr. and Mrs. Charles William Bolton of Southaven. She is the granddaughter of Mrs. Lois Bolton and the late Charlie Lamar Bolton of Marietta and Mrs. Beulah Felks and the late Richard V. Felks of Booneville.

The groom is the son of Dr. and Mrs. Melvin Alfred Nobles Sr. of Cookeville, Tenn. He is the grandson of the late Mr. and Mrs. Alfred Nobles of Corsicana, Texas, and the late Mr. and Mrs. Casa H. Carr of Abilene, Texas.

Prior to the ceremony, which was performed by Bro. Alan Highers, minister of the Southaven Church of Christ, selections of contemporary taped a cappella music were presented by the chorus of Abilene Christian University and the chorus of Harding University.

The bride was given in marriage by her father. She wore a gown of white chiffon over taffeta with an empire waist line featuring a bustle back with tiers of ruffles forming a train. The gown was trimmed in chantilly lace appliqued with seed pearls. The same design was repeated encircling a Queen Anne neckline. The bride carried a bouquet of silk flowers composed of white roses and carnations surrounding a purple-throated orchid.

Mrs. Shelia Sutton of Birmingham, Ala., served as Matron of Honor. Maid of Honor was Miss Donna Lee O'Neil of Southaven. Bridesmaids were Miss Beverly Shields of Opelousas, La., Miss Meladine Ann Nobles of Midland, Texas, sister of the groom, Mrs. Tammy Lee of Dennis, and Miss Becky Bellamy, of Marietta, cousin



Mr. And Mrs. Melvin Nobles

of the bride.

The honor attendants wore floor length gowns of rosetta quiana, and the bride's maids wore gowns of grape quiana.

Dr. Melvin Alfred Nobles Sr., father of the groom, served as best man. Groomsmen were Dr. Mike Thomas, Dr. Jerry Midyett, Frank Freeze, Dr. Ted Cobb, all of Memphis, and Gary McDonald of Cookeville, Tenn.

For her daughter's wedding, Mrs. Bolton chose a dusty rose quiana gown. Mrs. Nobles wore a soft blue quiana gown. Both wore white orchid corsages.

Following the ceremony, the bride's parents hosted a reception in the church fellowship hall. Mrs. Bonnie Shields served as wedding coordinator. Miss Penny Adams kept the bridal register, and Shana Pharr and Ginger Eaton, cousins of the bride, distributed rice roses made of grape satin.

Serving at the reception were Tammy Williams and Lisa Dukes, cousins of the bride, Betty Culbreath, Penny Adams, Teresa Terrell, Sylvia Cox, and Debbie Hinton.

The bride's table featured a three tiered cake enhanced by a lighted punch fountain at its base. The groom's table featured a chocolate sheet cake with marshmallow frosting.

The couple reside in Memphis where Mrs. Nobles is a bank management trainee in the Hernando Bank and Nobles is associated with Northwestern Mutual Insurance Agency.

Preceding the wedding, a rehearsal dinner was hosted by Dr. and Mrs. Nobles in the Petroleum Club for the wedding party and invited guests.

On Nov. 21 Mrs. Bolton hosted a brunch for the bridesmaids and their mothers.

Library Notes

By LEE DAVIS
Librarian
George E. Allen Library

Next week, April 19 - 24, is National Library Week, and the George E. Allen Library hopes that many of you will visit and use our resources and spend some times browsing.

Additional activities to our regular schedule include a children's hour on Tuesday at 9 a.m. for the very young. The class working toward children's literature in teaching and counseling under Mrs. Sandra Ford at the Northeast Mississippi Junior College will conduct these stories, puppet plays and felt-board stories. They are favorites with small patrons.

On Wednesday afternoon from 2 - 4, we will arrange a

paperback exchange for those who would like to trade their paperbacks with other patrons.

Thursday morning the library will host any business people who can drop by for coffee between the hours of 9:30 and 11:30 a.m.

On Saturday from 2-4 p.m. we invite you to an open house at the library. Winners of our yearly contest for school age children will display their entries and receive prizes, about 20 of them in the different categories.

We hope also to have some special activities for Boy Scouts. We are sure that classes of girls working on home care and family well-being will find hints and demonstrations on style, make-up, and hair care both

helpful and interesting. These groups have special times arranged.

This year's theme is "A Word to the Wise -- Library."

AFTER EASTER Spring Sale

- 1 Group Suits
- 1 Group Dresses
- 1 Group Mix & Match

1/2 OFF

Wright's

LADIES' APPAREL

LINES FROM THE CLOTHES PEN

Do you know...?

The "short story" goes to all lengths this summer, and we have short ones and long ones and all those in-b-tween. From really short to knee-length to mid-calf; from size 3 to ladies' 16 and that's the long and short of this tale. (tail??)

Have you noticed...?

We have the largest stock of **Ladies'** sportswear we've had in years . . . all sizes 8 to 16 in bright colors and cool easy-care fabrics plus figure-flattering styles. Many include the comfortable elastic waist. (pants, skirts, T-shirts to XL, etc.)

Have you realized...?

That you need a **split-skirt**? It's not just a fad like knickers . . . but a truly comfortable, stylish part of your wardrobe; and it's ageless . . . a nice, new look for juniors and ladies; and not just for summer . . . they're already being made in fall fabrics too.

Have you tried on...?

our **stretch** jeans! Oh, how wonderful you'll feel -- moving, sitting, bending . . . because they have just a touch of lycra. They're so great, we have them in sizes up to 18!

Have you seen...?

the cool, cotton **sleepwear** that's just arrived . . . perfect for Mother's Day (May 9th) and graduation gifts (you'll want to gift-yourself some too!).

Don't you think....?

It's time to shop The Clothes Pen while stocks are full -- now! Meet your friends at The Clothes Pen in Corinth.

Clothes Pen

Corinth, MS

This emblem means that Your Savings with us are Insured up to \$100,000 by an agency of the Government.

MEMBER

FSLIC

Federal Savings & Loan Insurance Corp.

Your Savings Insured to \$100,000



Introducing
Mendicino

Evening
Classics
Beauty Pageant
Prom
Special Occasion

Countrywood Bridals

by Cheryl

804 Taylor
Corinth, Ms. 38834

Phone
287-5012



COMPARE OURS WITH OTHERS

NORTH MISSISSIPPI SAVINGS and Loan Association

Oxford (Main Office) • Hernando • Horn Lake • Senatobia • Tunica • Clarksdale • Cleveland • Grenada • Starkville • Houston • Pontotoc • New Albany • Booneville • Ripley



DAR MEETING - Dr. Neola Cleveland (right) presented a historical program on genealogy at the April 1 meeting of the Natchez Trace Chapter of the Daughters of the American Revolution. Regent Mrs. O.C. Cleveland (2nd

At Monthly Meeting

DAR Has Historical Program

The Natchez Trace Chapter, Daughters of the American Revolution, had its regular meeting in the Hospitality Room at Northeast Mississippi Junior College April 1.

Hostesses for the meeting were Mrs. J.W. Abernethy, Mrs. Irb Benjamin, Mrs. Bobby Hodges, Mrs. Ralph Stutts and Mrs. M.C. Parker. The tables were decorated with spring flowers, paper rabbits, Easter eggs, and napkins denoting the Easter season.

Regent Mrs. O.C. Robinson presided at the meeting. Mrs. Paul Dobbins, chairman of the Flag of the United States of America Committee, led the chapter in the pledge of allegiance. Chaplain Mrs. Milton Waters led in the reading of the DAR Ritual.

Dr. Neola Cleveland presented a historical program entitled "Genealogy." In the presentation, she asked the members what was in their name and challenged them

from right) presided. Hostesses were Mrs. Irb Benjamin, Mrs. M.C. Parker, Mrs. J.W. Abernethy, Mrs. Bobby Hodges and Mrs. Ralph Stutts.

to do further research on their family histories.

She reminded them that inherited genes carry good and bad characteristics and that we are a distillation of those results from millions of ancestors back through the blood line. She advised that DAR now requires additional proof regarding support of dates, places, and names. She closed by telling the ladies that if they wanted to find selves, to find ancestors.

Mrs. Cooper Q. Hoover, in presenting a short National

Defense message, cited some unemployment statistics from other countries. She said history has taught that when the figure gets high, problems arise with war resulting in many cases for the countries involved.

Mrs. Robinson welcomed the members and guest, Mrs. Sam Milton, to the meeting. Following a business session, the meeting was adjourned with the repeating of the American's Creed.

Booneville Woman's Club Meets

Twenty-one members of the Booneville Woman's Club met in the Marion W. Smith Room at the George E. Allen Library April 8, for the club's monthly meeting.

Mrs. J. Curlee Ross, president, presided. The speakers table, covered with a yellow linen cloth edged with white lace, held a large white wicker basket holding beautiful spring flowers and a tiered arrangement of artistically decorated Easter eggs.

Mrs. W. Taylor Smith led the group in the club's Collect, and Mrs. Stanley Downs led the pledge of allegiance to the flag.

The hostesses, Mrs. Sam Galloway, Mrs. Marvin Smitherman, and Mrs. Lewis Earl Perry, served the guests a colorful salad plate highlighted with an edible bird's nest holding miniature colored candy eggs.

The guest speaker was Mrs. Paul Dobbins, a retired educator, who spoke on birds. Mrs. Dobbins who has been a bird watcher since childhood, discussed their beauty, life styles and

habits.

To substantiate her remarks, she had several tables displayed with pictures of birds, birds' nests, books on birds, a large plaque containing birds' feathers, and porcelain birds designed by Andre.

In discussing the economic value of birds, Mrs. Dobbins quoted Charles Reid as saying, "Native birds are one of the country's greatest assets." She gave the following suggestions to protect the birds: Don't burn forests, fields or leaves; keep cats away; feed the birds and provide nesting places.

Mrs. Dobbins' interest in birds led her to name the street on which she lives Cardinal and a nearby drive for the Towheel.

During the business session, Dr. Neola Cleveland reported on the District Convention of the Mississippi Federation of Women held in Blue Mountain March 27.

The local club was

represented by Mrs. Ross, president, Dr. Cleveland, president-elect, Mrs. Sam Galloway, Mrs. Bill White, Mrs. Sam Milton, and Mrs. L.W. Peeler. The club received awards on Citizenship and International Aid.



COURTNE GIBSON

Courtne Suzanne Gibson, daughter of Mr. and Mrs. Terry Gibson of Osceola, Ark., celebrated her third birthday March 6, with a strawberry shortcake.

Grandparents are Mr. and Mrs. Clasford Trantham of Blackland.



BETH CROW

Lori Beth Crow, daughter of Mr. and Mrs. Doug Crow, celebrates her first birthday today, April 15.

Grandparents are Mr. and Mrs. Sylvester Crow and Mr. and Mrs. Herbert Ashmore. Great-grandparents are Mr. and Mrs. Eugene Akers, Mrs. Orville Green and the late Ellis Shackelford, Mrs. Claude Ashmore and the late Mr. Ashmore, James David Crow and the late Mrs. Nora Crow.



ANGELA MOORMAN

Angela Darlene Moorman, daughter of Jeanna Moorman and Bobby Moorman, both of Hill's Chapel, celebrated her fifth birthday April 1.

Grandparents are Mr. and Mrs. Smith Brackeen of Booneville and Mr. and Mrs. Billy Moorman of Hill's Chapel. Great-grandparents are Mr. and Mrs. Vard Moorman of Gautier, Miss., and Mrs. Faye Nicholson of Booneville.

Her great-great-grandmother is Mrs. Sadie Hamlin of Biggersville.

Angela has one sister, Shanna Nicole, who is 19 months old.

Jumpertown News

By ANNIE ENGLISH
Correspondent

Mrs. Velma Jackson and Mrs. True Keenum were visitors of Mrs. Mattie May Hooper in Booneville on Tuesday.

Miss Ima Clement is seriously ill in the local hospital. Mrs. Lucy Dees is sick at her home. Our prayers are that they will soon be much better.

Mrs. Ivie Moore and Jason Moore visited in Southaven this week with Mr. and Mrs. David Moore, Mr. and Mrs. Sanford Moore and children, and Mr. and Mrs. John W. Moore and other relatives.

Mrs. Lois Caviness and Amber of Booneville, Mrs. Edith Johnson, Miss Annette Johnson and friend of Burbank, Ill., visited Mr. and Mrs. Gettis Moore Friday.

Mrs. Mary Francis Crow of Tupelo, Mr. and Mrs. Frankie Windham, Michael Morrow and Miss Ruth Hill, Junior and Teresa Wingo were luncheon guests of Mrs. Gladys Wingo Easter Sunday.

Mr. and Mrs. Wade Lambert, Mitch, Shea, and Trey hosted a luncheon in their home on Sunday for family members who attended Jumpertown Methodist Church to hear their nephew, Timmy Green, deliver the Sunday morning message.

Enjoying the fellowship were Mr. and Mrs. Jim Blasingame and Monica of Coldwater; Mr. and Mrs. Newell Brown, David, Brenda, Kim, and Dana, Mrs. Frances Moore, Mr. and Mrs. Jimmy Moore, Marti and Delia, Mr. and Mrs. Danny Childers, Mr. and Mrs. Whim Green, Mr. and Mrs. Sam Green, Mr. and Mrs. Ronnie Sweeney, Cammie and Courtney, Mr. and Mrs. Bud Green and Rose Ann, Mr. and Mrs. Bobby Smart, Mr. and Mrs. Giff Smart, Lonnie and Charlie, Mr. and Mrs. Freddie Corbin, Misses Anita Smart and Cheryl Eaton, Mrs. Mary Faye Green, Mr. and Mrs. Tim

Green and little Bob of Baldwin.

Other visitors at church were Mr. and Mrs. Olen Saylor, Mrs. Ila Padgett, Mrs. Modenia McKinney, Mr. and Mrs. Kenneth Nicholson, Lori and Brad, Mrs. Mary Sue Perrigo, and Mr. and Mrs. Murray Davis.

Mr. and Mrs. Wid Scarbrough of Houston, Miss, visited Mr. and Mrs. Dock Brumley Sunday.

Bob Grisham and Bob Grant of Houston visited Mr. and Mrs. G.A. English, Mr. and Mrs. Jeffery Grisham and Jered and with other relatives last weekend. Mrs. Ruth Grisham returned home with them Monday after several days visit with relatives.

Mrs. Gladys Wingo attended funeral services for Mrs. Jodie Wallis Tuesday at McBride Funeral Home in Ripely.

Mr. and Mrs. Sanford Moore, Debbie and David Moore, and Mr. and Mrs. Charles Hoot of Southaven were visitors of Mrs. Ivie Moore recently.

Mrs. Gettis Moore visited Mrs. Ruth Wilson in Booneville Wednesday.

Mrs. Velma Jackson, Kimble Crawford, and Derrick Pannell of Booneville and Jumpertown and Mrs. Dollie Windham of New Albany visited Mr. and Mrs. Lonell Malier and family, Mrs. True Keenum, and Mrs. Vital Malier in Minter City recently.

Mrs. True Keenum returned with them for a visit with Mr. and Mrs. Jessie Fuller, Mr. and Mrs. Earl Reed, Mrs. Velma Jackson and other relatives at Jumpertown and Crossroad community.

Mr. and Mrs. David Sims and daughter of Houston, Texas, and Miss Lanelle Sims of Marietta, Ga., have been spending their spring vacation with Mr. and Mrs. J.E. Sims, Mr. and Mrs. Buddy Sims and children and other relatives.

It's A Girl

Doyle and Cammie Hamm of Booneville announce the birth of a daughter, Maranda Camille Hamm, who was born March 31, at the North Mississippi Medical Center. She weighed 4 lbs. and 10 ozs. at birth.

Grandparents are Humbert V. and Shellie Crabb, and Eula May Hamm, all of Booneville.

ANNOUNCEMENT
William H. Preston, M.D.

is now limiting his practice to
Gynecological Surgery
and Office Gynecology.

Anderson Clinic
402 West Church Street
Booneville, Mississippi 38829
(601) 728-5551
Appointments Please

Grand Opening AT GODDARD'S JEWELRY
LAST 3 BIG DAYS THURS.-FRI.-SAT.

20% TO 30% OFF

Our Regular Prices On
EVERYTHING IN THE STORE

REGISTER EACH DAY FOR
• DIAMOND CLUSTER • DIAMOND & RUBY CLUSTER
• 6 - 14-K GOLD SAND DOLLARS
Drawings To Be Held Sat., April 17, 4:00 p.m.

Goddard's Jewelry
201 COLLEGE ST. (FORMERLY HANCOCK FABRICS)

•••WHIRLPOOL MICROWAVE OVENS•••

Free Cooking School At Our Store

Factory trained demonstrators can show you how to get the most satisfaction and enjoyment from your Whirlpool Microwave oven

Whirlpool MICROWAVE OVENS
Whirlpool model RJM7700

Cooking School To Be Tuesday, April 20, at 7 p.m. At Our Store

Featuring MICROCOMPUTER Pushbutton Control

Here's an outstanding blend of fine engineering and functional design that can help you serve up foods just as your family likes. The Microcomputer pushbutton control lets you program a series of cooking functions simply by pressing the appropriate buttons: Solid-State COOK POWER control provides a choice of 10 different power levels; choice of 2 cook cycles plus defrost; Balanced Wave Cooking System provides all-around cooking performance.

Bi-Level Cooking rack provides greater cooking flexibility

Solid-State MEAL SENSOR* temperature probe lets you cook by temperature. *Tmk

Come in for a demonstration

Pierce Appliance & Repair
Service Is Our First Consideration
107-A North Lake St. Phone 728-7146 Booneville, Miss.

•••WHIRLPOOL MICROWAVE OVENS•••

SPECIAL

2 - 8 X 10
2 - 5 X 7
10 WALLET

\$2.95 DEPOSIT
NO HANDLING CHARGE
\$10.00 ON DELIVERY

NO LIMIT
NO CHARGE FOR GROUPS
NO APPOINTMENT NECESSARY

**SATURDAY
APRIL 17, 1982
THE GROWING TREE**
COLLEGE STREET - BOONEVILLE, MISS.
10:00 A.M.-5:00 P.M.

PHOTOGRAPHY
by
Charles
P.O. Drawer 440
Iuka, Ms. 38852

AFTER EASTER SALE
JUNIOR & LADIES
SEVERAL GROUPS
1/3 TO 1/2 OFF
The Villager



HILL'S CHAPEL CLASS OF 1935 - A huge homecoming was held at Hill's Chapel School Saturday, April 3rd, with former students from all across the country attending. Shown is the Hill's Chapel graduating class of 1935 which includes (l-r) Julius McCoy, H.L. Smith, Maudie Faye Taylor Sartain, Lillian Gaines, Harmon Barker, Reba Horn Lacy, Virgil

Nicholson, Mary Glenn Phillips Rutherford, Inez Henson Bush and Geraldene Thompson. Not pictured, Modena Cole Chittom and Roda Lee Tidwell Bolt. Deceased members of the class include, Lucille Lester Price, Cecil Bishop, Carmon Holley and Evana Murphy. (Photo by Lee Gentry)



SENIOR CITIZENS RETURN HOME—These senior citizens from the Hill's Chapel Community turned out for the homecoming at the Hill's Chapel School on Saturday, April 3. Pictured (front row, left to right) are Mrs. Pearl Brown, 89; and Mrs. Louvenia McCreary, 99; Standing left to right, Otis Brown, 88; Mrs. Lena Thompson, 93; and Nellie Bonds, 88. (Photo by Lee Gentry)

Altitude News

By BLINDA DUNAWAY
Correspondent

On Thursday night, April 1st, Hill's Chapel Attendance Center presented the third annual Parade of Beauties, and what some beauties there were this year. As Garry English, master of ceremonies for the event, remarked many times during the night, "I sure would hate to have been the judge!"

The contestants were presented in four groups. In Division I (boys - headstart through 2nd grade) Brian George stole the hearts of the judges to be chosen Most Handsome. Hobie Lindsey was chosen as 1st alternate and Jason Cole as 2nd.

In the girls' groups, Division II (headstart through 2nd grade), Christy Storey charmed her way through the parade to be chosen Most Beautiful, with Tina Hamblin as 1st alternate and Tanya Riddle as 2nd alternate.

In Division III (grades 3 through 5) Pamela Lambert received the honor, and deservingly so, of being crowned Most Beautiful. 1st alternate was Valerie Johnson and 2nd alternate was Terrie Brimingham. From Division IV (grades

6 through 8) Lenena Holder was crowned Most Beautiful with Tina Perry as 1st alternate and Mary Wright as 2nd alternate.

These were certainly good choices that the judges made, but it must have been very difficult to make because all the contestants were beauties.

Wishes for a happy birthday this week go out for Amy Johnson, Mary King, Garry Adkins, Allen Wayne Stacy, Robert Thompson, Gay Armstrong, Stephen Burns, Dennis Johnson and John Garrett.

Belated birthdays wishes for those who had birthdays last week, April 4-10. These include Floree Lambert, Ted Burns, Wyvolette Tallant, Marvin Bain, Elaine Shook, Tony Carpenter, Martha Young, Brendy Sweeney and Bob Moorman.

Mr. and Mrs. Dave Carter of Memphis were weekend guests of Mrs. Juanita Hoard.

Jennifer and Brock Dunaway spent the day Saturday in Saltillo with Mr. and Mrs. Ben Dunaway and other family members. They also attended the birthday party for April Dunaway on Saturday.

Joyce Steen, Michelle

Barry and Rhonda Steen were recent visitors of Mr. and Mrs. Carmon King.

Clint Carroll enjoyed a trip to the State Band Contest in Jackson with the Booneville High School Band, then on to Biloxi with the FBLA group.

Larry Carroll attended the Mississippi Dairy Convention in Biloxi last week.

Saturday night guests of Mr. and Mrs. Leroy Foster were Pam Penna, Michelle, Jeff and Jared.

Saturday night supper guests of Mr. and Mrs. Collidge Young were Mr. and Mrs. Jimmy Hutchens and children. Andy and Randy Bailey, Cres and Tony Faulkner were Sunday visitors.

Mrs. Lela Newcomb visited Mr. and Mrs. Travis Dean on Saturday night.

Lenora Slack visited in the home of Myrtle Cole over the weekend.

Mrs. Verna Trimble and Linda visited on Sunday afternoon. Lenora and Verna soon discovered they they had been classmates when attending school at New Hope.

We had several visitors at Charter's Chapel church on Sunday for the morning worship services. Following services, everyone enjoyed

a fellowship lunch and the children enjoyed an Easter Egg hunt. Among the visitors were Mr. and Mrs. Jimmy Hoard, Heather and Jamie, Debbie Hutchens, Kristy and Robbie, Margie Burns, Tracy, Pat, Steve and Bryan, Mr. and Mrs. Billy Hutchens, Amanda and Angie, Pat Penna and children, Andy and Randy Bailey and Cres and Tony Faulkner.

Mr. and Mrs. Ted Burns, Mr. and Mrs. Mike Dunaway and children and Pat Burns visited in Tupelo on Sunday night in the home of Melodene Wroten. Angie and newborn daughter, Latoya, of New York were also visiting there.

Jennifer Dunaway spent Sunday afternoon with Martha Hutchens.

Pat Burns spent the weekend with his grandparents, Mr. and Mrs. Ted Burns.

Visitors in the home of Mr. and Mrs. Theron Johnson during the weekend were Mr. and Mrs. Floyd Roy, Mr. and Mrs. Clay Davis of Rienzi, Mrs. Genell King and her mother Mrs. Mary Battle, Mrs. Mildred Burns, Floree Johnson, Mr. and Mrs. David Whisenant, Cary McClain, Henry Bearden, Mrs. Frances Johnson and Julie and Donna Johnson.

Rienzi News

By VIOLA PRESLEY
Correspondent

Many of the families in our community are planning gatherings and Easter egg hunts on Easter Sunday. Everything indicates it will be a busy day for the Easter bunny. Family Day will be emphasized at the Rienzi Baptist Church services.

Relatives from Rienzi were in Booneville Saturday afternoon for the Bates-

Gallahar wedding.

Mr. and Mrs. Steve Bennett are in Florida this week with the BSU choir from Northeast Mississippi Junior College.

Guests Thursday night in the Presley home were Mr. and Mrs. Donnie Frazier, Rhonda, Kendall and Gregory Frazier of Corinth.

A number of people from our area have attended revival services at the Danville Baptist Church this week.

Mr. and Mrs. Adlo Smith of Corinth were guests Thursday night of Mrs. Hubert Doty and the three enjoyed a fish supper at the City Cafe.

Mrs. E.M. Furtick has returned to her work at the Mid-South Telephone Company after being kept at home a few days due to illness.

Friends of Mrs. Lessie Richardson of Jacinto are happy to learn that she is improving following a fall in

her home this week.

A number of friends and relatives of Mrs. Willie Dees of Biggersville were in Corinth today (Saturday) to attend her funeral service at McPeters Chapel.

The Ray Potts family of Memphis will be here for the weekend with the David Potts family for Easter. Sunday the group will join other family members in the home of Percy Potts of Gaston to celebrate the birthday of Mr. Potts.

Prospect News

By MRS. DUDLEY LINDSEY
Correspondent

Church services here Sunday were real good. Bro. Franks brought a wonderful message that was enjoyed by all present.

Mr. and Mrs. James Knight of Wabash, Ark., were Easter visitors of Mr. and Mrs. Buddy Knight and Jeff.

Mrs. Roy Treece of Corinth spent Easter with

relatives here.

Mr. and Mrs. Ronnie Kesler and Clay were guests Sunday of Mr. and Mrs. Buddy Knight and Jeff.

Lisa Roberts of Booneville spent last week with Mrs. Delma Lesley and J.C. Wilson.

The egg hunt at the home of Mr. and Mrs. Dudley Lindsey on Sunday was enjoyed by the children of the community and Lisa Roberts of Booneville.

Mrs. Roy Treece, Pinky

Wilson, Mrs. Dudley Lindsey, Mrs. Joe Stone and Robbie and Penny Lindsey visited with friends and relatives at Kirkville, Marietta and Booneville Sunday night.

Mrs. Mildred Cooper of Saltillo spent the weekend with Mrs. Dora Cravens.

Mr. and Mrs. W.E. Hall of Wheeler were guests Sunday of relatives here.

Lisa Roberts of Booneville and Mrs. Roy Treece of Corinth were Sunday dinner guests of Mr. and Mrs.

Dudley Lindsey.

Mrs. Syble Smith spent the weekend with Mr. and Mrs. Mike Burleson and children at Tupelo.

Mr. and Mrs. Tommy Yarber and children and A.C. Yarber of Cains Chapel were supper guests Saturday of Mr. and Mrs. J.L. Hall and Kevin.

Funds are needed for the up-keep of Prospect Cemetery. Donations may be made to Delma Lesley. All donations will be appreciated.

Jackson Named To AAA

James T. Jackson of Booneville has been elected to membership in the American Angus Association, according to Dick Spader, executive vice-president of the national organization with headquarters in St. Joseph, Mo.

The American Angus Association, with some 38,000 active life and junior members, is the largest beef cattle registry association in the world. Its computerized records include detailed information on nearly 10

million registered Angus. The Association records ancestral information and keeps records of production on individual animals for its members.

These permanent records help members select and mate the best animals in their herds to produce high quality, efficient breeding cattle which are then recorded with the American Angus Association.

Most of these registered Angus are used by the U.S. farmers and ranchers who raise high quality beef for U.S. consumption.

Goodloe In Naval Exercise

Navy Machinist's Mate 1st Class Percy Goodloe, son of Mary E. Austin of 555 Bradley St., Baldwin, recently returned from a deployment to West Africa and the Mediterranean Sea.

He is a crewmember aboard the destroyer USS Coontz, homeported in Norfolk, Va.

During the five and one-half month deployment, his ship participated in "West African Training Cruise 81" and "National Week."

"West African Training Cruise 81" was designed to provide several thirdworld countries in West Africa with a view of U.S. Navy and Marine Corps capabilities.

"National Week" was a 13-day exercise conducted in the Mediterranean Sea, and involved more than 25 ships and 300 carrier and land-based Navy aircraft. The U.S. 6th Fleet exercise was designed to test naval techniques in multi-threat air, surface and subsurface warfare.

The Coontz is 512 feet long and carries a crew of 377. It

is armed with guns, missiles and anti-submarine torpedoes.

RUDOLF NUNNEMANN
M.D., PA

announces

The Opening Of His Office.

PRACTICE LIMITED TO
UROLOGY

By Appointment only

287-8004

Doctors' Plaza
Alcorn Drive

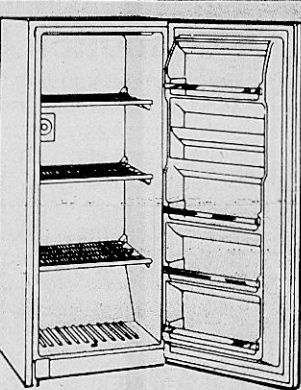
Suite 104
Corinth, MS.

RENT TO OWN!

APPLIANCES OR TELEVISIONS!

- NO CREDITORS CHECKED
- NO SECURITY DEPOSIT
- NO LONG TERM OBLIGATION
- SERVICE AND DELIVERY INCLUDED!

Gibson
Appliances



America's Largest TV/Audio/Appliance Rental System

COLOTYPE
TV RENTAL



RENT
BY
PHONE!

505 NORTH 2nd. STREET — HIGHWAY 45 NORTH
BOONEVILLE, MISS. 728-3148

BUILDER'S SUPPLY



FACTORY SALE

Glidden



Glidden's BEST Latex Flat House Paint

\$11.99
GALLON

Glidden's BEST Latex Gloss House Paint

\$12.99
GALLON

Glidden WHEN YOU MAKE A VERY GOOD PAINT, IT SHOWS!

BUILDER'S SUPPLY

403 EAST CHURCH STREET — BOONEVILLE, MISS. — PHONE 728-4011

Start your IRA Tax Shelter before April 30.

Earn 30% interest for thirty days.

Contribute to a First Bank IRA Tax Shelter account by April 30, 1982, and you'll earn interest at a whopping 30% annual rate for 30 days. And you'll earn high interest all year long.

Up to a \$4000 tax deduction every year.

Every penny you put in your IRA Tax Shelter, up to the maximum, is tax deductible. And you don't have to pay taxes on interest until you take out your money.

You can start your IRA Tax Shelter now with any amount. Or you can contribute to an existing First Bank IRA, and earn the 30% on the money you put in by April 30. If you have already made a contribution in 1982, your latest deposit will automatically earn this special rate. This interest will be paid during May of 1982.

The maximum a working couple can contribute from their joint income for the year is \$4000. For a couple with one spouse working, it's \$2250. And for an individual, it's \$2000.

In a 50% tax bracket, a \$2000 annual contribution could save you \$1000 a year on taxes. In a 30% bracket, it could save you \$600. For working couples, it could be twice that much.

An interest rate that keeps up with the market.

With a First Bank IRA Tax Shelter you always earn a competitive market interest rate, because the rate is tied to the rate for Money Market CD's and it varies quarterly. When interest rates soar—like they did last year—your rate does too. And vice versa. But no matter what happens, you're assured of earning money market rates.

And with this interest rate, your money grows into quite a nest egg for retirement. Maybe even a million, if you start young enough.

Use your tax refund or start monthly payments now.

You're smart to put your 1981 tax refund in a First Bank IRA Tax Shelter. With this deduction, you could get a much bigger refund next year. Or if you have money in savings or other investments, you may want to move that money to an IRA Tax Shelter, so you can get the big 30% and earn high interest all year.

Or at First Bank, you can contribute monthly. You only need to contribute \$166 a month for the \$2000 annual maximum for an individual. For working couples, it's \$333 for the maximum.

And for couples with one spouse working, it's \$187.

But on a monthly plan, it's important that you start now.

So you can reach your maximum before the April 15, 1983, deadline.

To make it more convenient, we can automatically withdraw your monthly IRA Tax Shelter payment from your First Bank checking account.

Maybe a deduction for '81, too.

Beginning in '82, anyone who earns income is eligible for an IRA. If in 1981 you were NOT covered by a pension, or profit-sharing plan where you work, you can make an IRA contribution by April 15 and take a deduction on your '81 taxes. The maximums, however, are lower

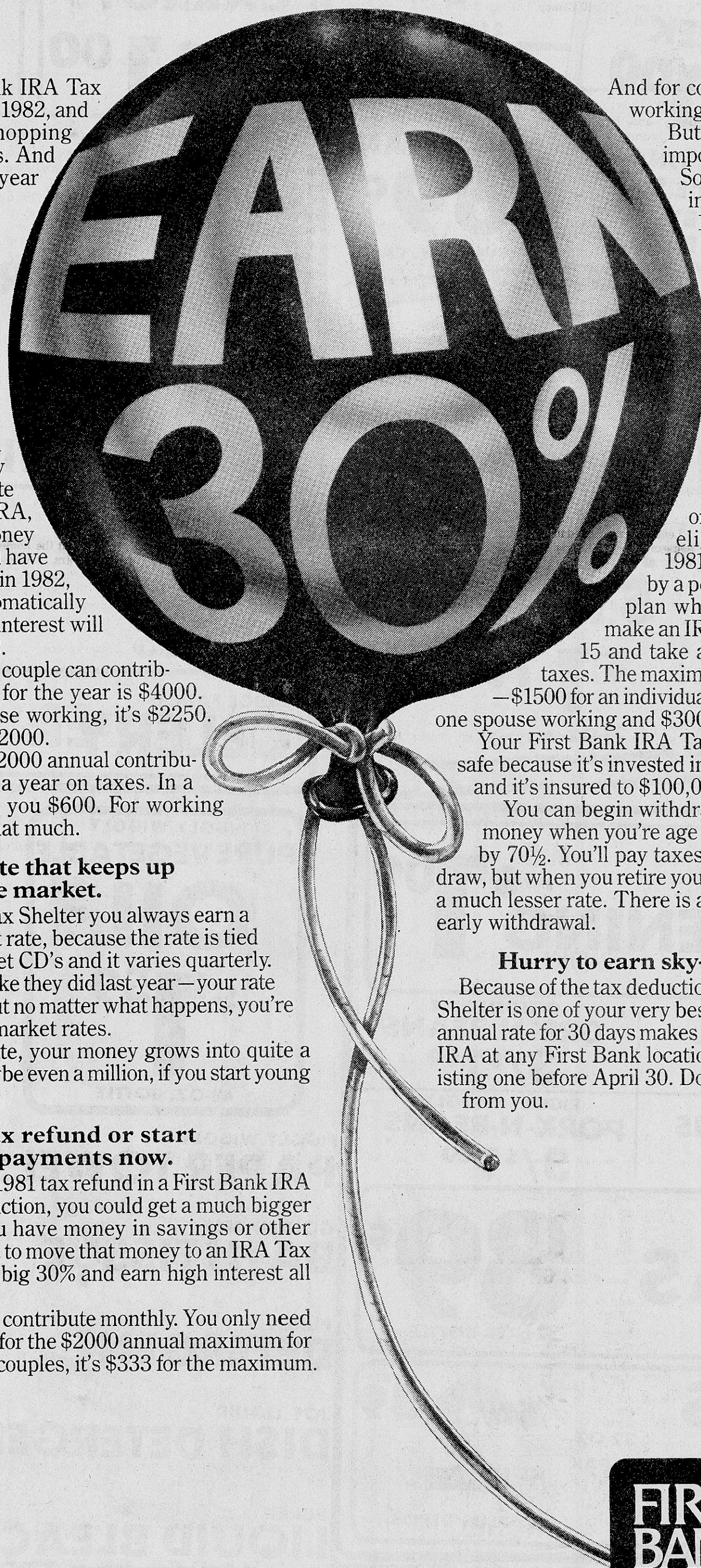
—\$1500 for an individual, \$1750 for couples with one spouse working and \$3000 for working couples.

Your First Bank IRA Tax Shelter is completely safe because it's invested in 18-month savings plan and it's insured to \$100,000 by the F.D.I.C.

You can begin withdrawing your Tax Shelter money when you're age 59½ and you must start by 70½. You'll pay taxes on the money you withdraw, but when you retire you'll probably pay taxes at a much lesser rate. There is a substantial penalty for early withdrawal.

Hurry to earn sky-high interest.

Because of the tax deduction, a First Bank IRA Tax Shelter is one of your very best investments. Our 30% annual rate for 30 days makes it even better. Open your IRA at any First Bank location or contribute to an existing one before April 30. Don't let this one get away from you.



**FIRST
BANK**

MEMBER F.D.I.C.



PIGGLY WIGGLY

HI-WAY 45
BOONEVILLE, MISS.

**CASH
POT
THIS WEEK
\$400⁰⁰**

NUMBER POSTED ON COKE
MACHINE INSIDE STORE.
IF NO WINNER BY 4-19-82,
\$50.00 WILL BE ADDED.

NO PHONE
CALLS FOR
NUMBER
PLEASE.

KELLY'S
BEEF STEW

\$1²⁹

24-OZ. CAN

KELLY'S
**CHILI
WITH BEANS**

69¢

15½-OZ. CAN

COKE
AND FLAVORS

\$1¹⁹

2-LITER BOTTLE

PIGGLY WIGGLY
**PANCAKE
SYRUP**

\$1¹⁹

24-OZ. BOTTLE

JIFFY
**Corn
Muffin
Mix**

**4<sup>8½-OZ.
PKGS.</sup>
99¢**

GOLDEN BEST

SHORTENING

\$1⁰⁹

EATWELL
MACKEREL
15-OZ.
CAN

69¢

GOLDEN BEST
GREEN BEANS

3/\$1⁰⁰

BUSH
PINTO BEANS
3/\$1⁰⁰

PIGGLY WIGGLY
PORK-N-BEANS
3/\$1⁰⁰

PIGGLY WIGGLY

COLAS

ALL FLAVORS

89¢

2-LITER BOTTLE

COKE

DR. PEPPER,
MELLO YELLO,
TAB, SPRITE

32 OZ.
6-PAK

\$2³⁹

PLUS DEPOSIT

FRESH PRODUCE

CELLO
CARROTS

**3<sup>1-LB.
BAGS</sup> \$1⁰⁰**

RED
GRAPES

99¢
POUND

FRESH GREEN
CABBAGE

POUND **19¢**

FRESH
YELLOW CORN

5 EARS **99¢**

FLORIDA
ORANGES

5-LB. BAG **\$1²⁹**

YELLOW ONIONS

3-LB. BAG **79¢**

U. S. NO. 1 RED
POTATOES

10-LB. BAG **\$1³⁹**

RED OR GOLDEN
APPLES

3-LB. BAG **\$1¹⁹**

LARGE FANCY
CELERY

3/\$1⁰⁰

PIGGLY WIGGLY
PURE VEGETABLE

OIL
\$1⁵⁹

48-OZ. BOTTLE

STARKIST
TUNA

89¢

6½-OZ. OIL OR
WATER PAK

PIGGLY WIGGLY
PAPER TOWELS

2/\$1⁰⁰

GOLDEN BEST
BATH TISSUE

6-ROLL PKG. **\$1¹⁹**

PUREX
DETERGENT

42-OZ. BOX **\$1¹⁹**

JOY LIQUID
DISH DETERGENT

22-OZ.
BOTTLE **1⁰⁹**

PUREX
LIQUID BLEACH

GALLON
JUG **79¢**



STORE HOURS:
7:30 A.M.-7:00 P.M.
MONDAY-SATURDAY
CLOSED ON SUNDAYS

PIGGY WIGGLY

WE RESERVE
THE RIGHT TO
LIMIT
QUANTITIES

THE MOST FOR YOU!

GREAT DOG
WIENERS

59¢

12-OZ. PKG.

PIGGY WIGGLY
LUNCH
MEATS

OLIVE
PICKLE
LIVER LOAF
6-OZ. PKG.

69¢

USDA CHOICE

SIRLOIN STEAK

LB.

\$2.49

QUARTER PORK LOIN

PORK CHOPS

LB.

\$1.29

CENTER CUT

PORK CHOPS

LB.

\$1.79

COUNTRY STYLE

BACKBONES

LB.

\$1.39

LAND-O-FROST THIN

LUNCH MEATS

2/89¢

SLICED SLAB

BACON

LB.

\$1.39

SWIFT

CANNED HAM

3-LB. CAN

\$5.99

KELLY'S

LUNCH
MEATS

99¢

12-OZ. CAN

SOLIDS

OLEO

3/\$1

1-LB. BLOCKS

THE BEST BUYS IN TOWN

ZESTA

CRACKERS

1-POUND BOX

79¢

CAMPBELL'S CHICKEN NOODLE

SOUP

3/\$1.00

PIGGY WIGGLY

PEANUT BUTTER

18-OZ. JAR

\$1.19

GOLDEN BEST
TEA BAGS

99¢

100-CT. BOX

PRIDE-OF-ILLINOIS
CREAM STYLE
CORN

2/89¢

PRIDE-OF-ILLINOIS
WHOLE KERNEL
CORN

2/89¢

BRYAN
BOLOGNA

\$1.29

12-OZ. PKG.

PIGGY WIGGLY
WIENERS

\$1.09

12-OZ. PKG.

PIGGY WIGGLY
USDA GRADE A
MIXED PARTS

FRYERS
43¢

POUND

FRESH
FRYER LIVERS

69¢

POUND

MARTHA WHITE
PLAIN OR SELF-RISING

FLOUR

89¢

5-POUND BAG

PIGGY WIGGLY

BISCUITS

69¢

4-PACK CARTON

GRILLMASTER

Bologna

79¢

1-LB. PKG.

GRILLMASTER

FRANKS

79¢

1-LB. PKG.

PIGGY WIGGLY

SUGAR

5-POUND BAG

\$1.39

PIGGY WIGGLY

Mayonnaise

QUART JAR

89¢

GOLDEN BEST

SLICED IN-LIGHT-SYRUP

PEACHES

29-OZ. CAN

69¢

PIGGY WIGGLY
EVAPORATED

MILK

13-OZ. CAN

2/89¢

THOUGHT FOR THE WEEK

By Larry E Hill

“That I May Know Him, And The Power Of His Resurrection, And The Fellowship Of His Sufferings, Being Made Comfortable Unto His Death.”

Philippians 3:10

Although many sermons have been preached and voluminous articles have been written about the suffering of Christ in His death on Calvary, man's finite mind has never fully explored the depth of agony experienced by our Lord. Furthermore, our limited understanding of the cross of Calvary can only be illumined by the Spirit. In a tragic world of doubt and careless living, we must guard our hearts in prayer that the message of the cross does not appear as foolishness, but that it may be the power of God unto Salvation.

It is true that other men have died with great physical pain, but no one can fully experience the excruciating agony Christ endured on the cross, for His death is unique in the history of man. Two thieves were crucified at the same time as Jesus, one each side of Him. They felt the nails, the pulled flesh and bones, and the reproach of a criminal's death. However Christ's death was unique in that He who was sinless in His nature and in His deeds was dying for the sins of others. Man therefore has been given remission of sins through the death of the innocent

Perhaps the greatest prophetic view of Calvary is given in the 53rd chapter of Isaiah. Christ was said to be: despised, rejected, a man of sorrow, acquainted with grief, stricken,

smitten, afflicted, wounded for our transgressions, bruised for our iniquities, oppressed, brought as lamb to the slaughter. He also; received chastisement and stripes, made His grave with the wicked, poured out His soul unto death, bore the sins and iniquities of many.

The tide of opposition from the religious leaders rose until their jealous hatred flooded the multitudes and crested in the crucifixion of Jesus. He was rejected by His own.

Thus Jesus humbled Himself to die. He did it all because He loved the lost.

To despise the blood of the covenant, to tread under foot the Son of God, to sin in spite of the Spirit of grace, will thrust a soul before the fearful judgement and fiery indignation of Almighty God.

Although we cannot enter into the full dimensions of suffering endured by Jesus, we are called to sufferings with Him. For your consideration, let me leave the following scriptures with you:

1 Peter 2:21, 1 Peter 4:1, Philippians 1:29, Luke 9:23, Romans 12:1-2, Romans, 8:17-18. If we identify with Him in death, we will live through Him in the resurrection.



Larry E. Hill, Pastor
First United
Pentecostal Church

This page is possible through the request and cooperation of interested ministers in our area. It is brought to you through the support of the businesses listed below.

Banner-Independent
DEDICATED TO THE PEOPLE & PROGRESS OF
PRENTISS COUNTY

Booneville Banking Association
THE PEOPLES BANK & TRUST CO.
BANK OF MISSISSIPPI
FIRST CITIZENS NATIONAL BANK

Coca-Cola-Corinth
COKE ADDS LIFE TO EVERY THING NICE

Tigrett Drug Center, Inc.
“PRESCRIPTION SPECIALISTS”

Farm Bureau Insurance
LIFE-AUTO-FIRE

Gerald Hodges Printing
“SERVING YOU IS A PRIVILEGE WE APPRECIATE”
728-6476

Gold Bond Exterminators
JIMMY MURPHY, MANAGER

McMillan Funeral Home
83 YEARS OF SERVICE

**Mechanical & Electrical
Supply, Inc.**

Booneville Tile Co.
728-6627

Prentiss Manufacturing

Salts Funeral Home
SERVING YOU BECAUSE WE CARE

Sonic Drive-In
JIMMY AND ANN FISHER

**New Orleans
Famous Fried Chicken**
JIMMY AND ANN FISHER

S&J Ready-Mix, Inc.
728-4431

Schweiger Furniture Co.
FASHIONS IN FURNITURE

Baptist
BOONEVILLE FIRST FREE WILL BAPTIST CHURCH
202 N. Lake St., Luther Gibson, Pastor
SUNDAY-Sunday School 10:00 a.m., Morning Worship 11:00 a.m., Evening Worship 6:00 p.m., WEDNESDAY-Church Training and Bible Study 7:00 p.m.
CALVARY BAPTIST
Corner Main and Broad St., R.J. Bostick, Pastor
SUNDAY-Sunday School 9:45 a.m., Morning Worship 11:00 a.m., Training House 5:00 p.m., Evening Worship 6:00 p.m., WEDNESDAY-Bible Study 7:00 p.m.
CASEY CREEK BAPTIST CHURCH
Off Hwy. 366-Harvey Reeves, Pastor
SUNDAY-Sunday School 10:00 a.m., Morning Worship 11:00 a.m., Evening Worship 6:00 p.m.
CANDLERS CHAPEL BAPTIST CHURCH
Pastor F.A. Collins
SUNDAY-Sunday School 10:00 a.m., Training 5:30 p.m., Preaching 6:00 p.m.
CRESTWOOD BAPTIST
Hwy. 4 East, Jerry Mitchell, Pastor
SUNDAY-Sunday School 9:30 a.m., Worship 10:30 a.m., Training Union 5:30 p.m., Worship 6:30 p.m.
EAST BOONEVILLE BAPTIST CHURCH
East Church St., Wayne Forepoules, Pastor
SUNDAY-Sunday School 9:45 a.m., Worship Hour 11:00 a.m., Church Training 5:00 p.m., Worship 6:00 p.m., WEDNESDAY-Worship 7:00 p.m.
EAST PRENTISS BAPTIST CHURCH
Booneville, Kenneth Bishop, Pastor
SUNDAY-Sunday School 10:00, Worship Service 11:00 a.m., Training Union 6:00 p.m., Worship Service 7:00 p.m., WEDNESDAY-Bible Study 7:00 p.m.
INDEPENDENT FAITH BAPTIST MISSION
Hwy. 30 E. Booneville, Bill Johnson, Pastor
SUNDAY-Sunday School 10:00 a.m., Morning Worship 11:00 a.m., Evening Service 6:00 p.m., WEDNESDAY-Evening Service 7:00 p.m.
FIRST BAPTIST CHURCH
401 West Church St., Tom F. Rayburn, Pastor
SUNDAY-Sunday School (Broadcast WBIP) 9:45 a.m., Morning Worship 11:00 a.m., Church Training 5:00 p.m., Evening Worship 6:00 p.m., WEDNESDAY-Prayer Meeting 6:30 p.m.
FORKED OAK BAPTIST CHURCH
Route 6, Horace McCombs, Pastor
SUNDAY-Sunday School 10:00 a.m., Worship 11:00 a.m., Training Union 6:00 p.m., Preaching 6:30 p.m., WEDNESDAY-Prayer Service 7:00 p.m.
GASTON BAPTIST CHURCH
Gaston-Carolina Road, Milton Koon, Pastor
SUNDAY-Sunday School 9:30 a.m., Worship 10:30 a.m., Church Training 6:00 p.m., Worship Service 6:45 p.m., WEDNESDAY-Prayer Meeting 7:00 p.m.
GRACE INDEPENDENT BAPTIST
Frankstown, Jan Milton, Pastor
SUNDAY-Sunday School 10:00 a.m., Morning Worship 11:00 a.m., Evening Worship 7:00 p.m., WEDNESDAY-Prayer Meeting 7:00 p.m.
JONES CHAPEL FREE WILL BAPTIST
Jacinto-Altitude, Travis Smith, Pastor
SUNDAY-Sunday School 10:00 a.m., Morning Worship 11:00 a.m., Evening Worship 5:00 p.m.
LITTLE BROWN MISSIONARY BAPTIST CHURCH
Near Hobo Station, Johnny Sherrill, Pastor
SUNDAY: Sunday School: 10:00 a.m., Worship Service: 11:00 a.m., Afternoon Services: 5:00 p.m., Prayer Meeting Wednesday: 7:00 p.m.
LITTLE BROWN FREE WILL BAPTIST
Route 1, New Site, Gene Gilbert, Pastor
SUNDAY-Sunday School 10:00 a.m., Morning Worship 11:00 a.m., Evening Worship 7:00 p.m., WEDNESDAY-Prayer meeting and C.T.S. 7:00 p.m.
LITTLE CREEK MISSIONARY BAPTIST
Marietta, Elbert Roy Bennett, Pastor
SUNDAY-Sunday School 10:00 a.m., Morning Worship 11:00 a.m., Training Union 5:00 p.m., Evening Worship 5:30 p.m.
MARTIN HILL FREE WILL BAPTIST CHURCH
Route 5, Hwy. 30 East, Johnny Sexton, Pastor
SUNDAY-Sunday School 10:00 a.m., Morning Worship 11:00 a.m., Evening Worship 6:00 p.m., WEDNESDAY-Church Training and Bible Study 7:00 p.m.
MT. PLEASANT MISSIONARY BAPTIST
Altitude, Bro. Truman Strickling, Pastor
SUNDAY-Sunday School 10:00 a.m., Worship Service 11:00 a.m., Evening Service 5:00 p.m., WEDNESDAY-Prayer meeting 6:30 p.m.

MT. PISGAH FREE WILL BAPTIST
Hollis Southerland, Pastor
SUNDAY-Sunday School 10:00 a.m., Morning Worship 11:00 a.m., Evening Worship 6:00 p.m., WEDNESDAY-C.T.S. and Bible Study 7:00 p.m.
NEW BURTON BAPTIST CHURCH
Pastor: Terry Scott
SUNDAY: Sunday School 10:00 a.m.; Worship 11:00 a.m., Training Union 5:30 p.m., Worship 6:30 p.m., Wednesday night services 6:30 p.m.
NEW LEBANON FREE WILL BAPTIST
Highway 364-Bro. Vance Sexton, Pastor
SUNDAY-Sunday School 10:00 a.m., Morning Worship 11:00 a.m., Evening Worship 5:30 p.m., WEDNESDAY-Church Training and Bible Study 6:30 p.m.
NEW SITE BAPTIST
New Site, James Hulton Bishop, Pastor
SUNDAY-Sunday School, 1st and 3rd Sunday 1:00 p.m., 2nd and 4th Sunday 10:00 a.m., Preaching 1st and 3rd Sunday 2:00 p.m.
OAK HILL BAPTIST CHURCH
Blackland Community, Bro. Marion Payne
SUNDAY Sunday School 10:00 a.m., Morning Worship 11:00 a.m., Training Union 6:00 p.m., Evening Worship 7:00 p.m., WEDNESDAY-Prayer Meeting 7:00 p.m.
OSBORNE CREEK BAPTIST CHURCH
Tom F. Rayburn, Interir-Pastor
SUNDAY-Worship Services 2nd and 4th Sunday 9:30 a.m., Sunday School every Sunday 10:30 a.m.
PINEY GROVE BAPTIST CHURCH
Route 1, Bro. Eugene Tennison, Pastor
SUNDAY-Sunday School 10:00 a.m., Morning Worship 11:00 a.m., Sunday evening 6:00 p.m.
SMITH'S CHAPEL FREE WILL BAPTIST
Jacinto Road, Danny Short, Pastor
SUNDAY Sunday School 10:00 a.m., Worship 11:00 Sunday night 6:30 p.m., WEDNESDAY: Church Training and Bible Study 7:00 p.m.
WHEELER BAPTIST CHURCH
Wheeler, Glen Brown, Pastor
SUNDAY-Bible Study 9:45 a.m., Morning Worship 10:55, Evening Worship 6:00 p.m., WEDNESDAY-Bible Study 7:00 p.m.
WHEELER PRIMITIVE BAPTIST CHURCH
North of Wheeler School, James R. White, Elder
SUNDAY-Bible Study 10:00 a.m., Preaching 11:00 a.m.
JUMPERTOWN BAPTIST MISSION
Jumpertown, Pastor, Chris Burrows
SUNDAY: Sunday School: 9:30 a.m., Morning worship, 10:30 a.m., Church Training 5:30 p.m., Evening Worship 6:15 p.m., WEDNESDAY: Midweek Prayer Meeting: 6 p.m.

Church Of Christ
BOONEVILLE CHURCH OF CHRIST
Highway 45 North, Bill Huggins Minister
SUNDAY-Sunday School 9:45 a.m., Sunday Worship 10:35 a.m., Evening Worship 6:00 p.m., WEDNESDAY-Bible Study 7:00 p.m.
CARTERS CHAPEL CHURCH OF CHRIST
Highway 364 E., Altitude Rd., G.T. Pharr, Minister
SUNDAY-Bible Study 9:30 a.m., Worship 10:00 a.m., Evening Worship 5:00 p.m., WEDNESDAY-Bible Study 7:00 p.m.
HILLS CHAPEL CHURCH OF CHRIST
4 Miles East of Booneville, Hwy. 30
Brother Charles Leonard, Minister
SUNDAY-Sunday School 9:45 a.m., Worship 10:45 a.m., Evening Worship 6:00 p.m., WEDNESDAY-Bible Study 7:00 p.m.
MARIETTA CHURCH OF CHRIST
Marietta, Richard Gooch, Minister
SUNDAY-Sunday School 9:45 a.m., Worship 10:30 a.m., Evening worship 6:00 p.m., WEDNESDAY-Bible Study 7:30 p.m.
JACINTO CHURCH OF CHRIST
Jacinto, J.T. Smith, Minister
SUNDAY-Sunday School 10:00 a.m., Worship 11:00 a.m., Evening 5:30 p.m., WEDNESDAY-Mid-Week Bible Study 6:30 p.m.
JUMPERTOWN CHURCH OF CHRIST
Jumpertown
Bro. Troy McNutt, Minister, Bro. Oscar Clark, Minister
SUNDAY Sunday Worship 10:00 a.m., Sunday Evening 5:30 p.m., WEDNESDAY: Bible Study: 6:00 p.m.

NEW BETHEL CHURCH OF CHRIST
1 mile west of New Site on Hwy. 4,
Lee Cole, Minister
SUNDAY-Bible Study 9:30 a.m., Worship 10:30 a.m., Evening 6:00 p.m., WEDNESDAY-Bible Study 7:00 p.m.
NORTH RIENZI CHURCH OF CHRIST
Rienzi, Jerry Childs, Minister
SUNDAY-Bible Study 10:00 a.m., Worship 10:45 a.m., Sunday night 6:30 p.m., WEDNESDAY-Bible Study 7:30 p.m.
OAK RIDGE CHURCH OF CHRIST
Blackland Community, Ernest Walker, Minister
SUNDAY-Bible Class 9:30 a.m., Worship 10:30 a.m., Sunday night 5:30 p.m., WEDNESDAY Wednesday night 7:00 p.m.
SNOWDOWN CHURCH OF CHRIST
Jim Archer, Minister
SUNDAY-Bible Classes 10:00 a.m., Worship 11:00 a.m., Evening Worship 6:00 p.m., WEDNESDAY-Mid-Week Bible Study 7:00 p.m.
ROARING HOLLOW CHURCH OF CHRIST
East of New Site
James Wroten, Minister
SUNDAY-Bible Study 9:30 a.m., Worship 10:30 a.m., Evening 5:00 p.m., WEDNESDAY: Study 6:00 p.m.
STUTTS CHAPEL CHURCH OF CHRIST
1 mile W. of Harris Skating Rink Highway 45 N.
Robert C. Tice, Sr., Minister
SUNDAY-Bible Study 10:00 a.m., Preaching 11:00 a.m.
WEST BOONEVILLE CHURCH OF CHRIST
Highway 4 West, Ward Hogland, Minister
SUNDAY-Bible Study 9:45 a.m., Worship 10:30 a.m., Evening Worship 6:00 p.m., WEDNESDAY-Bible Study 7:00 p.m.
ZION'S REST CHURCH OF CHRIST
Preacher: Grady Wigginton
Hwy. 371 Marietta Community
SUNDAY-Bible Study 9:30 a.m., Worship 10:30 a.m., Evening Worship 5:00 p.m., WEDNESDAY-Mid-week Bible Study 7:00 p.m.

Church Of God
BOONEVILLE CHURCH OF GOD
Corner S. Lake & Hatchie St., James Wells, Pastor
SUNDAY-Sunday School 10:00 a.m., Worship Service 11:00 a.m., Evening Worship 6:00 p.m., WEDNESDAY-Family Training Hour 7:00 p.m.
CANAAN ASSEMBLY OF GOD
400 Marietta Street, Jerry Ford, Pastor
SUNDAY-Sunday School 9:45 a.m., Morning Worship 11:00 a.m., Youth Service (C.A.) 6:00 p.m., Evening Worship 7:00 p.m., WEDNESDAY: Prayer Meeting 7:30 p.m.
CHURCH OF GOD
Wheeler, Allen Smith, Pastor
SUNDAY-Sunday School 10:00 a.m., Sunday Worship 11:00 a.m., Evening 6:00 p.m., WEDNESDAY-Family Training Hour 7:00 p.m.
INDEPENDENT CHURCH OF GOD
North Lake & Terry St., Austin Shook, Pastor
SUNDAY-Sunday School 10:00 a.m., Morning Worship 11:00 a.m., Evening Worship 6:45 p.m., WEDNESDAY-Prayer Meeting 7:00 p.m.
MARIETTA CHURCH OF GOD OF PROPHECY
Florence Ables, Pastor
SUNDAY-Sunday School 10:00 a.m., Morning Worship 11:00 a.m., Youth Service 6:00 p.m., Evening Worship 7:00 p.m., WEDNESDAY-Prayer Meeting 7:00 p.m.
MT. OLIVE CHURCH OF GOD
Route 6, Booneville, Andrew L. Marshall, Pastor
SUNDAY-Sunday School 9:45 a.m., Morning Worship 11:00 a.m., Worship Service 5:00 p.m.

Church Of God And Christ
NORTHEAST MISSISSIPPI CHURCH OF GOD AND CHRIST
Hwy. 30 East at 364 Intersection
B.R. Nunley and Tulon L. Jackson, Ministers
ASSEMBLING: Sunday, 10:00 a.m. and 7:00 p.m., WEDNESDAY: 7:30 p.m.
Catholic
INFANT JESUS OF PRAGUE CATHOLIC
Hwy. 45, 3 mi. South of Booneville
George Pinger, S.C.J. Administrator
SATURDAY-1st and 3rd and 5th confessions 4:30 p.m., Sunday Mass 9 a.m., religious instructions younger children 10 a.m., Jr. and Sr. High School WEDNESDAY 6:30 p.m.

Bible Church
LAKEVIEW BIBLE CHURCH
Meadow Creek Road, Bobby White, Pastor
SUNDAY-Sunday School 10:00 a.m., Morning Worship 11:00 a.m., Evening Worship 5:30 p.m., WEDNESDAY-Prayer Meeting and Bible Study 7:00 p.m., SATURDAY-Young peoples service 7:00 p.m.
Mormon
THE CHURCH OF JESUS CHRIST OF LATTER DAY SAINTS
George E. Allen Road, J.C. Morris, Bishop
SUNDAY - 9:00 a.m., Sacrament Service; 10:20 a.m., Priesthood, Relief Society, Primary; 11:20 a.m., Sunday School. MONDAY - Family Home Evening. WEDNESDAY 6:30 p.m., Scouting, 6:30 p.m., Seminary, 6:30 p.m., Relief Society Home, Making Meeting - (first Wednesday only) 7:30 p.m., Youth Activities.
United Methodist
BLYTHES CHAPEL
Blythes Chapel Rd., Ronald Wenzel, Pastor
SUNDAY-Sunday School 10:00 a.m., Worship Service 11:00 a.m., MYF 6:00 p.m., Church Service 7:00 p.m., WEDNESDAY-Bible Study 7:30 p.m.
CAROLINA UNITED METHODIST
Route 3, James P. Perry, Pastor
SUNDAY-Sunday worship 1st Sunday 11:00 a.m., 2nd Sunday 10:00 a.m., 3rd Sunday 6:00 p.m., 4th Sunday 10:00 a.m.
CHRIST UNITED METHODIST
Route 2, Blackland, Gerald Chaffin, Pastor
SUNDAY - Morning Worship 10:00 a.m., Sunday School 11:00 a.m., UMYF 5:00 p.m., Evening Worship 1st and 3rd Sunday 6:00 p.m. WEDNESDAY - Mid-week 7:00 p.m.
CROSS ROADS UNITED METHODIST
Route 3, James P. Perry, Pastor
SUNDAY-Sunday Worship 1st Sunday 10:00 a.m., 2nd Sunday 6:00 p.m., 3rd Sunday 11:00 a.m., 4th Sunday 6:00 p.m., WEDNESDAY-Prayer Meeting 5:30 p.m.
FIRST UNITED METHODIST CHURCH
Booneville, Charles L. Potts, Minister
SUNDAY-Church School 9:45 a.m., Morning Worship 11:00 a.m., UMYF 5:30 p.m., Junior Fellowship 5:00 p.m., Evening Worship 7:00 p.m., Mid-Week Prayer 6:30 p.m.
GRACE UNITED METHODIST CHURCH
East Church St., C.D. Edge, Pastor
SUNDAY-Sunday School 9:45 a.m., Morning Worship 11:00 a.m., UMYF 6:30 p.m., Evening Worship 7:00 p.m., THURSDAY-Bible Study 7:30 p.m.
JUMPERTOWN UNITED METHODIST
James P. Perry, Pastor
SUNDAY-Sunday worship 1st Sunday 7:00 p.m., 2nd Sunday 11:00 a.m., 3rd Sunday 10:00 a.m., 4th Sunday 11:00 a.m., 5th Sunday 11:00 a.m., WEDNESDAY-Prayer Meeting 6:30 p.m.
LAMBS CHAPEL INDEPENDENT METHODIST
Jumpertown, W.E. Sharp, Pastor
Gene Coltharp, Associate Pastor
SUNDAY-Sunday School 10:00 a.m., Worship 1st Sunday 11:00 a.m., Bro. Sharp, 3rd Sunday Evening 6:30 p.m., Bro. Coltharp, WEDNESDAY-Bible Study 6:30 p.m.
LIBERTY UNITED METHODIST CHURCH
Hwy. 30 East, C.D. Edge, Pastor
SUNDAY-Sunday School 9:00 a.m., Morning Worship 10:00 a.m., UMYF 6:00 p.m., THURSDAY-Bible Study 6:30 p.m.
MARIETTA UNITED METHODIST CHURCH
Jimmy M. Glover, Pastor
SUNDAY- Sunday School 10:30 a.m., Worship Services 9:30 a.m., 1st, 3rd and 4th Sundays, 12:30 p.m., 4th Sunday, 11:00 a.m., 5th Sunday

MT. NEBO UNITED METHODIST CHURCH
Jimmy M. Glover, Pastor
SUNDAY: Worship Services: 12:15 p.m., 1st and 3rd, 9:30 a.m., 5th Sunday
WHEELER UNITED METHODIST
Wheeler, Gerald Chaffin, Pastor
Sunday: Sunday School 10:00 a.m., Morning Worship 11:00 a.m., Evening Worship 2nd and 4th Sundays 6:00 p.m., Mid-week Prayer - Wednesday 7:00 p.m.
RIENZI UNITED METHODIST
Rienzi, Ms. Gerald Carpenter, Pastor
SUNDAY-1st and 3rd Sundays: 11:00 a.m., 2nd and 4th Sunday: 6:00 p.m.
PISGAH
Gerald Carpenter, Pastor
SUNDAY-1st and 3rd Sundays: 6:00 p.m., 2nd and 4th Sundays: 11:00 a.m.
BETHEL
Gerald Carpenter, Pastor
SUNDAY: 1st and 3rd Sundays: 9:45 a.m., 2nd and 4th Sundays: 5:00 p.m.
THRASHER
Gerald Carpenter, Pastor
SUNDAY: 1st and 3rd Sundays: 5:00 p.m., 2nd and 4th Sundays: 9:45 a.m.

SILOAM UNITED METHODIST CHURCH
Jimmy M. Glover, Pastor
SUNDAY- Sunday School 10:00 a.m., each Sunday, Worship Services 11:00 a.m., 1st, 2nd, 3rd and 4th Sundays.
Pentecostal
THE EAST BOONEVILLE PENTECOSTAL CHURCH
1400 East Church, Pastor, Rev. Buddy Marshall
SUNDAY: Sunday School: 10:00 a.m., Evening Worship- 6:00 p.m.
EMMANUEL UNITED PENTECOSTAL CHURCH
Hwy. 4 East E.L. Spence, Pastor
SUNDAY-Sunday morning 10:00 a.m., Morning worship 11:00 a.m., Youth Service 4:30 p.m., Evening Worship 6:00 p.m., THURSDAY-Prayer and Bible Study 7:15 p.m.
FIRST PENTECOSTAL CHURCH
206 North Lake St., Larry Hill, Pastor
SUNDAY-Sunday School 10:00 a.m., Morning Worship, (Broadcast WBIP F.M.) 11:00 a.m., Youth Fellowship 5:15 p.m., Evening Worship 6:00 p.m., WEDNESDAY-Prayer and Bible Study 7:00 p.m.

Presbyterian
BOONEVILLE PRESBYTERIAN
West George E. Allen Drive, Booneville
I.K. Foster, Pastor
SUNDAY Sunday Morning Worship 9:00 a.m., Sunday School 10:00 a.m.
THE HOUSE OF PRAYER ASSEMBLY OF CHRIST
Route 4, Booneville, Leland Owens, Pastor
SUNDAY: Worship 5 p.m.


Bring
Your Family
Closer Together

By JESSIE PRESLEY
Correspondent

Mr. and Mrs. Lonnie Murphy and Kyle, Mr. and Mrs. Brodie Murphy, Judy and Scotty spent the weekend in Chattanooga, Tn., with Mr. and Mrs. Mark Lowery, Dena and Jeannie. We are glad to report that Mrs. Ola Geno is home and doing well after her surgery at the North Mississippi Medical Center in Tupelo. She says she didn't know she


We extend our deepest sympathy to the families of Waverly Parker who passed away last Tuesday, April 6. Waverly lived in Pascaguola and was the husband of Mary (Hannah) Parker. The Parkers are formerly of Booneville.

Manfred Saylor
Business-
728-9595
Home-
728-6880

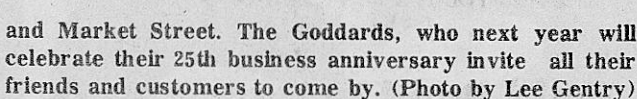
A black and white portrait of a man, Manfred Saylor, wearing a suit and tie, smiling slightly.

**305 WEST COLLEGE ST.
BOONEVILLE, MISS.**

**State Farm Fire and Casualty
Company**

The State Farm logo, featuring three interlocking ovals with the words "STATE FARM" above and "INSURANCE" below.

Home Office: Bloomington, Illinois

[illegible]

Prices Good Thru April 17, 1982 **Thursday—Friday—Saturday**

Pro Champs

4.43 Childrens Sizes

- Lightweight nylon uppers with sweeping side stripes, suede-like reinforcements
- Padded collar • Cushioned insole
- Made in USA
- Mens 6½-12, boys 2½-6, youths 11-2

7.47

4.47

7.53

6.76
(C) Walt Disney Productions

- Uppers in classically styled canvas
- Comfort cushioned insole
- Hand wrapped skid resistant rubber bottom
- Teens & womens sizes to 10, misses 12½-3

3.43

Save Up To 2.45
Womens & Girls Pro Champs™
Athletic Shoe

- Sweeping stripe-trimmed; man-made uppers
- Comfortable padded collar; soft tricot lined tongue
- Full cushioned insole
- Wave pattern, crepe-like sole
- Teens & womens sizes to 10 misses 1 1/2-3, childs 5-12

Reg. 8.96 9.96 10.96

7.51

WAL-MART'S ADVERTISED MERCHANDISE POLICY — It is our intention to have every advertised item in stock, however if due to any unforeseen reason, an advertised item is not available for purchase, Wal-Mart will issue a Rain Check on request for the merchandise to be purchased at the sale price whenever available, or will sell you a similar item at a comparable reduction in price. We reserve the right to limit quantities.

WAL-MART

[illegible]

Crafts Sales

NORTH MISSISSIPPI

Fashion Shows

EXPO '82

Trace Hall of Fame — Tupelo, Miss.

April 16 & 17, 1982

Friday & Saturday

All Breed Swine Show & Sale

Miss.-Ala. Fairgrounds-Tupelo

Sat., April 17, 1982

10:00 a.m.- and 1:00 p.m.

Bring The Entire Family!

SPONSORED AND PROMOTED BY: BIG TEN DEVELOPMENT ASSOCIATION, IJC, NORTHEAST JR. COLLEGE, CDF AND YOUR LOCAL AG AGENCIES, ORGANIZATIONS, BUSINESSES AND INDUSTRIES.

Food

Fun

Mrs. Linda Johnson Named Chairman For Cancer Society

WAL-MART

Eastgate Mall
Open Daily 9 a.m. Til 9 p.m.
Prices Good Thru April 17, 1982

Booneville, Miss.
Thurs.—Fri.—Sat.

Camping Sale

Tackle Box
Rebel No. 600
11⁴³
3 Trays
Reg. 12.96

94.83

Great Savings!
Woodmaster Cabin Tent

- 3 Oz. spun polyester beige & brown wall fabric
- Roof fabric: 4¾ oz. polyester cotton-white
- Scovil zipper
- 2-18"x37" Outside flap windows
- Yoke style aluminum frame
- Base size 10'x8'
- Center height 6'2"
- No. 32001

WENZEL

36.84
—4.00
32.84

Deluxe 2-Burner Stove

- Fuel capacity-3½ pints, burning time 2 hrs.
- Size 22x13¼x6½ • Water type stainless steel burners stay lit in strong wind
- No. 413H499

Coleman

68.46

Great Savings
3 Man Dome Tent

- Hexagon design tent made of flame retardant ripstop
- Urethane coated rain fly
- Screen mesh door and window with zip up storm flap
- 7½"x7'2" Floor
- 4'5" center height
- No. 4648

28.86
—10.00
18.86

Fluorescent Lantern With Batteries

- Battery operated
- Impact plastic
- No. 360-S • Reg. 32.96

RAY-O-VAC

23.87

Great Savings
Coleman Sleeping Bag

- 33"x75"
- Aluminum zipper
- Tie strings
- Red
- Ranch brown
- Electric blue
- No. 8231-664
- No. 8231-655
- No. 8231-667

MACHINE WASHABLE
Coleman

12.00

Men's Pro Champs

- Push stitched soft ray suede uppers
- Padded collar
- Full cushioned insole
- Men's sizes 6½-12
- Reg. 15.96

14.00

Men's 6'' Workboot

- Goodyear welt constructed vinyl uppers
- Comfortable padded collar, convenient back pull tab
- Oil resistant ribbed sole
- Men's sizes 7-12
- Reg. 18.96

33.84
—4.00
29.84

Double Mantle Lantern

- Easy lite value • Wide ventilator • Reg. 37.96

Coleman

33.64

Great Savings
Gott Ice Chest

- 50 Qt. capacity
- Removable food tray
- Insulated seat top lid
- Drain plug
- No. 19504

WAL-MART TV SPECIAL

11⁹⁶

Air Mattress

Heavy Duty
27 Coil Construction.
Silver And Clear

18.86

Aluminum Cot

- Green vented • 100% Polyester • 25"x72"
- One-inch aluminum
- No. 110C

WAL-MART

WAL-MART'S ADVERTISED MERCHANDISE POLICY
It is our intention to have every advertised item in stock. However, if due to any unforeseen reason, an advertised item is not available for purchase, Wal-Mart will issue a Rain Check on request for the merchandise to be purchased at the sale price whenever available, or will sell you a similar item at a comparable reduction in price. We reserve the right to limit quantities.

MasterCard VISA



CLEAN-UP CAMPAIGN — Kathy Reed (left) and Tina Moore, Jumpertown project chairman, are shown putting out plants and cleaning up around the Jumpertown Town Hall as part of a countywide clean-up campaign during April. The clean-up campaign is being sponsored by the Prentiss County Development Association and the county Extension office. April 16 has been declared Spring Clean-up Day.

Legal Notice

SUBSTITUTED TRUSTEE'S NOTICE OF SALE

WHEREAS, on the 13th day of July, 1981, Douglas Ray Davis and wife, Branda Annette Davis, executed a land Deed of Trust to Tim Ford, Trustee for the benefit of Hellen Ricks, which Deed of Trust is recorded in the Office of the Chancery Clerk of Prentiss County, Mississippi, in Deed of Trust Book 131 at Page 215-217, and

WHEREAS, Hellen Ricks, as the holder of the aforesaid Deed of Trust, substituted and appointed Thomas M. McElroy as Substituted Trustee therein in place and stead of Tim Ford, by instrument dated the 23rd day of February, 1982, and duly recorded in the Office of the Chancery Clerk of Prentiss County, Mississippi, in Deed Book 134 at Page 555, and

WHEREAS, default having been made in the payment of the indebtedness secured by said Deed of Trust and Hellen Ricks having requested the undersigned to do, I will therefore on the 7th day of May, 1982, offer for sale at public outcry and sell during the legal hours at the front door of the County Courthouse of Prentiss County at Booneville, Mississippi, for cash to the highest bidder the following land and property situated in Prentiss County, Mississippi, to-wit:

Lot No. 57-A of Part II, Section A of the Forrest Hill Subdivision, as shown by Map, Plat and Survey of said Subdivision recorded in Plat Book 1, Page 52 in the office of the Chancery Clerk of Prentiss County, Mississippi. Subject to Restrictive Covenants recorded in Plat Book 1, Page 46, Chancery Clerk's Office of Prentiss County, Mississippi.

I will convey only such title as is vested in me as Substituted Trustee. This property is being sold subject to a Deed of Trust from Douglas Ray Davis and wife, Brenda Annette Davis, to Talmadge L. Finch, Trustee for the benefit of the Farmers' Home Administration, which Deed of Trust is recorded in the office of the Chancery Clerk of Prentiss County, Mississippi, in Deed of Trust Book 108 at Pages 438-441.

WITNESS MY SIGNATURE, this the 13th day of April, 1982,
THOMAS M. McELROY,
SUBSTITUTED TRUSTEE
April 15, 22, 29, May 6, 1982
07-4TC

Legal Notice

SUBSTITUTED TRUSTEE'S NOTICE OF SALE

WHEREAS, on August 20, 1979, E.L. Caviness executed a certain Deed of Trust for the benefit of Baldwin Finance Company, Inc., Baldwin, Mississippi, which Deed of Trust is of record in Trust Deed Book 123, Pages 66 and 67, Chancery Clerk's Office, Prentiss County, Mississippi; and

WHEREAS, the owner and holder of the aforesaid Deed of Trust has duly substituted and appointed R. Michael Bolen as Substituted Trustee in the place and stead of the original Trustee, by an instrument dated April 7, 1982, and recorded in Trust Deed Book 135, Page 278, Chancery Clerk's Office, Prentiss County Mississippi; and

WHEREAS, default having been made in the terms and conditions of said Deed of Trust and the entire debt secured thereby having been declared to be due and payable in accordance with the terms of said Deed of Trust and the legal holder of said Deed of Trust, Baldwin Finance Company, Inc., having requested the undersigned Substituted Trustee to execute this trust and sell said land and property in accordance with the terms of said Deed of Trust for the purpose of raising the sums due thereunder, together with attorney's fees, trustee's fees and expenses of sale.

NOW, THEREFORE, I, R. Michael Bolen, Substituted Trustee, do hereby declare that I will on the 7th day of May, 1982, offer for sale at public outcry, and sell within legal hours (being between the hours of 11:00 a.m. and 4:00 p.m.) at the West door of the County Courthouse in the County of Prentiss, Booneville, Mississippi, to the highest and best bidder for cash, the following described property lying and being situated in Prentiss County, Mississippi, to-wit:

Part of the Southeast Quarter of Section 15, Township 5, Range 7 East, bounded as follows: Commencing at the Northwest corner of said Quarter, run thence East 500 feet, more or less, to a point in the East side of Robertson Street, thence South and parallel with the East side of said street 186 feet; thence East and parallel with the North boundary line of said Quarter 126 feet; thence South 14 feet; thence East 165 feet for a true point of beginning; thence East 93 feet; thence South 70 feet; thence West 93 feet to a point 70 feet South of the point of beginning; thence North 70 feet to the point of beginning.

ALSO: Part of the Southeast Quarter of Section 15, Township 5, Range 7 East, as follows: Beginning at a point 718 feet from the Intersection of Lake and Hatchie Streets for a starting point run thence South 190 feet; thence East 178 feet, more or less, to the West boundary of the lot deeded to Clay Parvin as shown by Deed Book 60, Page 287; thence North 35 feet; thence North 35 degrees West 178 feet to North boundary of said Quarter; thence West 90 feet, more or less to the beginning point.

Said sale will be made subject to a first mortgage in favor of World Finance Company, Inc.

I will convey only such title as is vested in me as Substituted Trustee.

WITNESS MY SIGNATURE ON this the 12th day of April, 1982,
R. MICHAEL BOLEN,
SUBSTITUTED TRUSTEE
April 15, 22, 29, May 6, 1982
07-4TC



MR. AND MISS JHS--Recently selected as Mr. and Miss Jumpertown High School are, left to right, Hollis Green, Marit Moore, Tammy Brumley and Sammy Barnett. Two sets were chosen this year due to a tie. Mr. and Miss JHS was selected by the student body. (Photo by Lee Gentry)

8 To 10 Million Suffer From Chemical Poisoning Annually

Five-year-old Chrissy was watching her father clean out the garage. It was a warm day, and the can of liquid on the ground looked too good to resist. Her dad turned around to check on her just as Chrissy was swallowing the turpentine.

This is just an example of the eight to ten million people in the United States who are exposed to chemical poisoning every year. According to the University Medical Center Poison Control Center in Jackson, there's an average of 40-50 poison cases a day in Mississippi, with an average of 60-70 cases resulting in death each year. Precautionary steps should be taken to avoid the possibility of poisoning, especially when there is an inquisitive child in the home. All medicines and

household products should be kept in a locked cabinet or in a high, out-of-reach location for the child. Medicines and harmful substances should be taken only as prescribed. If a poison is ingested, a doctor or local emergency department should be contacted immediately. While awaiting trained personnel, the poison can be diluted by giving the victim several glasses of water or milk. This will slow the body's absorption. However, no liquid should be forced on the patient if he is unconscious or experiencing convulsions. Vomiting should never be induced unless the doctor advises it. Pain Thinner and gasoline, as well as lye and other caustics could do as much damage coming up as it did going down. The victim should be

transported to the hospital as soon as possible. If available, the poison container, medicine bottle, or sample of the vomited material should be taken along with the victim so that it may be quickly analyzed and the proper counterdose administered. The North Mississippi Emergency Medical Services Authority in Pontotoc offers a complete counterdose chart, available upon request. It lists over 35 common poisons and drug overdoses, and divides them into 16 categories. Each category thoroughly describes the measures to be taken in the case of poisoning or overdose. Free copies of the chart may be obtained by writing The North Mississippi EMS Authority, 116 North Main Street, Pontotoc, MS 38863, or by calling 489-2006.

Drug Awareness Week Set

By gubernatorial proclamation, the week of April 12-18 is Drug and Alcohol Awareness Week in Mississippi. A state-wide campaign is underway to make people aware of an important health and safety issue, teenage drinking and driving. Traffic accidents are the number one cause of death among teenagers. And most of those accidents involve a drinking driver. Fifty percent of high school students report that they drink in cars and about one in four reports driving after having had "a good bit" to drink.

Although drinking alcohol is against the law for most young people, most of them do drink. Surveys show that teens are drinking more and they're starting younger. Teens are inexperienced at both drinking and driving. When they combine the two, they become auto accidents waiting to happen. Young drinking drivers endanger themselves and everyone else on the road. Television and radio spots are planned over the next few weeks to publicize the dangers of teenage drinking and driving. Parents are being urged to talk to their teenagers about

drinking and driving. Parents are also being asked to examine their own drinking practices and beliefs to see whether they are setting safe examples for their children. Two brochures--"Play It Smart" for teenagers and "Talking to Your Teenager About Drinking and Driving" for parents--are available at the Timber Hills Mental Health Center on the Highway 30 By-Pass in Booneville, or by phoning 728-3174. Emergency counseling services are available after-hours and on weekends by phoning 1-286-9209 toll-free.

World's Largest Insect Collection

Northeast Will Be Bugged Next Week

The world's largest exhibit of living insects is coming to Booneville! On Tuesday, April 20, Milan Busching, curator of invertebrates for the Cincinnati Zoo, will bring the zoo's traveling exhibit of insects to the Northeast Junior College where several hundred sixth grade students from five counties are expected to gather for the presentation. The presentation on Tuesday is part of a three-day program sponsored by the Northeast Mississippi Museum Association (NEMMA) in Corinth. Programs will be held in Prentiss, Alcorn and Tishomingo counties. On Monday, April 19, the exhibit will be presented at 6:30 p.m. at Tishomingo

State Park. The same program will be presented at 6:30 p.m. April 21 at the Corinth Chamber of Commerce. There is no charge to the public for these programs. Busching will also present the program during the day at several schools within the three-county area. The programs from the Cincinnati Zoo are a "thank you" for the insects sent to the zoo last year by NEMMA, according to NEMMA director Doug Fleury. The museum association will sponsor a bug hunt again this year for students 8-16 years old, Fleury said. "Last fall the top three collectors spent five days in Cincinnati visiting the zoo and other interesting places," Fleury said. "Zoo staff and volunteers took the winners behind the scenes to show them how the animals are cared for." The Cincinnati Zoo and NEMMA first became acquainted with each other during the summer of 1979 when museum director Fleury took a very large glowworm to the zoo. Busching asked if everything in Mississippi was so big and Fleury

responded that he didn't know but expected that there were other things just as large. Since then, NEMMA has furnished thousands of insects to Cincinnati and other zoos, universities and museums. Busching, who is an acknowledged wildlife photographer, photographed one of the insects captured in Mississippi and that photograph appears on a page in this year's zoo calendar. Busching has been involved with the development of the "World of Insects" exhibit in Cincinnati since 1978. During that time, he has traveled to Panama, Ecuador and Trinidad to collect large exotic insects for display and breeding. One of the insectarium's important projects is a breeding collection of giant Hercules beetles from South America. While working with them, Busching has made several new discoveries on the life cycle. During the program at Northeast Junior College on Tuesday, Busching will show slides of his expeditions to the jungle and of his work at the zoo. He will also demonstrate special

equipment used to capture insects. The highlight of every program, according to Fleury, is a "meet the insect" opportunity. Student aides from the museum will carry large, living insects and anthropods to different sections of the audience. Information about this year's museum bug hunt will be available through libraries and schools during

May, Fleury said. Lists of insects needed, their point value and care will be available to would be collectors. Live insects turned in will be sent to the Cincinnati Zoo, the Washington Park Zoo (Portland, Ore.) and the Smithsonian Institute. Preserved insects will be sent to Purdue University or used in the museum's study collection.

McDonald's Announces
A
\$100.00 Winner
in the
"Quality In The Bag" Game

McDonald's serves only delicious Russet Burbank potatoes

HALLMARK
LISTED 5 YEAR WARRANTY

High Temperature = High Utilities
Don't Lose Your Cool

Homeowners are installing Hallmark ceiling fans to cut cooling costs. Save on utility cost by raising your cooling thermostat and at the same time you remain cool and maintain the same comfort level. Hallmark ceiling fans use only 90 watts — what a savings!

HALLMARK
Offers Outstanding Values

- Elegant Styling
- Quality All Metal Construction
- Beautiful Wood Blades
- Whisper Quiet
- Multi-Speed
- Reversible for Year Round Use and Savings
- Never Needs Oiling
- Easy To Install

Some models with FREE Wicker Blades
COMPLETE SELECTION OF LIGHT KITS FROM \$12.95
FANS FROM \$76.00

Mechanical & Electrical Supply, Inc.
400 EAST CHURCH STREET — BOONEVILLE, MISS.
PHONE: 728-5848 HOURS: MON-FRI 7-5 SAT 7-30-12-00

Robert Stricklin presents
Carolyn Rowan the \$100.00 prize she won in McDonald's "Quality In The Bag" game.

Lots Of Prizes Left!
YOU COULD BE THE NEXT WINNER!

Hwy. 45 North
Booneville, Miss.

McDonald's

A SALUTE TO INDUSTRY

We know what's good for us.

APRIL 1-30 MISSISSIPPI

- Mississippi's industrial payroll was more than \$2.5 billion in 1980.
- Industry in the Magnolia State employed more than 221,000 in 1980.
- Mississippi's existing industry provided 60% of the new manufacturing jobs and 83% of the manufacturing capital investment in 1980.
- Mississippi's new and expanded industries generated 10,981 new job opportunities in 1980.
- Mississippi industry continues to improve the quality of life for all Mississippians.



COUNTY DISTRICT SCIENCE FAIR WINNERS - Shown are some of the recent winners at the county district Science Fair. Class I winners are Amy Gahagan, first, Fellsha Warren, and Tabitha Lauderdale, all of Thrasher; Class II, Melissa Arnold, third, Wheeler; Ragan Sharp, fifth, Thrasher; Ronnie Walker, third, Hill's Chapel; Angela Wammock, second, Thrasher; Mitzi Cosby, fifth, Thrasher; Class III, Kenneth Tye, first, Thrasher; Jennifer Anderson, second, Thrasher; Matt Rinehart, first, Thrasher; Terry Lauderdale, fourth, Jumpertown; Mitzi DaVaughn, fourth, Wheeler; Class IV, Chris Campbell, fifth, Thrasher; Peter

Bullard, second, Thrasher; Mike Smith, third, Wheeler; Pam Flemming, second, Wheeler; Lisa Griffin, fifth, Wheeler; Kathy Barger, fourth, Wheeler; Sandy Floyd, third, New Site; Tracey Gifford, first and International, Thrasher; Class V, Donna Alexander, second, Jumpertown; Lisa McCreary, first, Thrasher; James Lenske, third, Wheeler; Sidney Blassingame, third, Thrasher; Melanie Johnson, third, New Site, Lori Trantham, fourth, Thrasher; Jeff McGrew, third, Wheeler; Greg Downs, third, Wheeler; Jessica Goddard, fourth, Thrasher; and Dan Floyd, third, Thrasher.

Dogwood - Beautiful, Practical

By JOHN STUART
County Forester

With spring green-up well underway all over Mississippi a good many Sunday drivers are out enjoying the dogwoods blossoming along roads around the State.

Much-loved as one of nature's finest displays, especially when interspersed with dark pines, the flowering dogwood is extremely popular as an ornamental yard tree.

Indians liked it, too, for they used bark of the smaller roots to make a red dye. The split ends of small branchlets can be used as toothbrushes, and in fact some say they whiten teeth exceptionally well.

Powdered bark can reportedly be made into a toothpaste; into black ink

when mixed with iron sulphate; and, because the inner bark is bitter, into a quinine substitute.

In spring before the foliage appears, the dogwood's layered crown of white, pink or red bracts makes a spectacular beautiful view and is likely to compel a head-turning second look.

Dogwoods are attractive to a variety of wildlife. Some 86 species of birds, including turkeys and bobwhites, eat the fruit, according to one published source. Squirrels like the bright red drupes that appear in late summer and fall, as well. Foresters often specify leaving trees like the dogwood when writing management prescriptions for timberland.

"Cornus florida" is its official name, and, unlike a lot of ornamental

favorites such as azaleas and camellias that were originally exotic, it is native to America.

Dogwoods are found from Maine to Florida across to Texas. They are widely distributed in Mississippi's uplands but are generally absent from the Mississippi River flood plain in their natural pattern.

Because the dogwood remains a small tree and thrives either in full sun or in partial shade as an understory, it can be used in many landscape plans when other trees would be unsuitable.

The flowering dogwood can be propagated from cuttings, budding and grafting. Grown from seed, it takes two years to germinate. Ordinarily it bears flowers at age 10 to 12. In addition to the more common form, double-

flowering and weeping forms are grown.

Although its growth is slower in South Mississippi than in other parts of the state, it has medium-fast growth under ideal conditions.

It likes well-drained soil, a low water table and acid soil. While it is very sensitive to heavy, poorly drained soils, it is also sensitive to drought, especially in hot months. It may begin to wilt and require watering if no rainfall occurs for a week or so.

There are several types of dogwood, but Cornus florida is the only one important for its wood. Hard and heavy, similar to hard maple, its wood is used for weaving spindles, bobbins, tool handles, mallets, gold club heads and wood engravings.

County Is Critical Erosion Area

By C.E. CALVERT
County Executive Director

APRIL 2 ACREAGE REDUCTION REPORT SHOWS 101.3 MILLION ACRES ENROLLED

Farmers nationwide have signed up in the 1982 acreage reduction programs 101.3 million acres of feed grain, rice, upland cotton, and wheat base acreage according to figures released today by the U.S. Department of Agriculture. The enrolled acreage represents 44.8 percent of the 226 million acres to total base acreage.

Last week, USDA reported 73.5 million acres had been enrolled.

The signup, which continues through April 16, is required before farmers are eligible for program benefits such as Commodity Credit Corporation loans, target price protection and - for wheat and feed grain participants - eligibility for the grain reserve.

Farms on which a 1982 base was established should report a zero if the crop was not planted for 1982 harvest in order to protect the base for future planting. The program provides that the 1982 base will not be reduced for underplanting if a zero planting is reported by the applicable filing date.

Base acreage enrolled through April 2 includes 47.1 million under the feed grain program, 2 million under the rice program, 7.9 million under the upland cotton program and 44.3 million under the wheat program.

Farmers who sign up to participate in the acreage reduction programs for upland cotton, rice and wheat agree to reduce their base acreage of these commodities by at least 15 percent while feed grain producers will voluntarily reduce their base acreage by 10 percent. The acreage

taken out of production will be devoted to a conservation use.

Enrollment figures show that 46 percent of Mississippi's cotton farmers had enrolled through April 2. Nationwide 44 percent of the cotton farmers had enrolled. Enrollment figures for other commodities are: wheat - Mississippi 12 percent, Nationwide 32 percent; corn-grain sorghum - Mississippi 12 percent, Nationwide 27.5 percent.

USDA ANNOUNCES WOOL AND MOHAIR SUPPORT PRICES FOR 1982

Wool producers will receive support prices of \$1.37 per pound for 1982 marketings of shorn wool and \$3.97 per pound for mohair, according to Everett Rank, administrator of the U.S. Department of Agriculture's Agricultural Stabilization and Conservation Service.

Pulled wool will continue to be supported at a level comparable to the support price for shorn wool through payments on unshorn lambs, Rank said. As in past years, shorn wool payments will be based on a percentage of each producer's returns from sales, Rank said. The percentage will be that required to raise the national average price received by all producers for shorn wool in 1982 up to the support price of \$1.37 a pound, he said. In 1981, shorn wool prices averaged about 95 cents per pound, he said.

Any mohair payments will be calculated in a manner similar to wool. After not making any mohair payments for ten years, payments were required for 1981 marketings and projected prices indicate payments may also be necessary for 1982 marketings, Rank said.

CONSERVATION USE ACRES MAY BE GRAZED UNTIL MAY 1

Provisions of the 1982 farm programs require that cropland taken out of production be devoted to conservation uses to protect it from wind and water erosion. The land may not be mechanically harvested, however, grazing is permitted except during the six principal growing months.

Prentiss County farmers who participate in the program are not authorized to graze conservation use acres between May 1 and Oct. 31, 1982. However, barley, oats and wheat planted before Jan. 29, 1982, can be designated as conservation use acreage and can be grazed throughout the year or taken for hay before reaching the hard dough stage. The Secretary of Agriculture made this exception to recognize the situation of producers who had already planted a crop before the acreage reduction programs were announced.

Land designated as conservation use acres must be eligible cropland that was planted to small grains or row crops, or devoted to hay within one of the past two years in an established rotation with a small grain or row crop. To protect conservation use acres from weeds, insects, rodents and erosion, farmers are required to devote the land to approved conservation practices.

Approved conservation uses include annual, biennial, or perennial grasses and legumes, volunteer stands other than weed, small grains and crop residue from use of no till or minimum till methods. Special cover and practices may be approved by the State ASC committee, with concurrence of the State

conservationist and various wildlife agencies to assure that the conservation use acreage will be adequately protected.

PRENTISS COUNTY LISTED AS CRITICAL EROSION AREA

Prentiss County has been designated as a critical erosion area and is targeted to receive \$25,840 in Agricultural Conservation Program funds.

These funds will be used to treat the most critical erosion problems in the County. The new target concept allows National, State and local governments, and farmers themselves, to treat critical conservation problems while maintaining practices already established.

\$6.5 million has been allocated for erosion control in 126 counties in the nation, and \$2.5 million for water conservation in 73 counties. The targeted funds are included in the national \$190 million budget for the fiscal 1982 conservation program.

The conservation measures used will provide solutions to resource problems and reduce excessive erosion through cost-effective conservation practices such as no-till. Long term agreements covering a period of 3 to 5 years will be emphasized.

Prentiss County is one of eight Mississippi counties scheduled for targeted ACP funds. The program is a joint effort by government and other groups to restore and protect basic land and water resources and the environment. The Soil Conservation Service also has targeted funds to solve erosion problems in Prentiss County.

By combining conservation resources and expertise, we will meet the greatest needs in the county in the most economical manner.

For Good Pastures

Grass Selection Is Important

By DAVID SUMMERS
Soil Conservationist
Soil Conservation
Service USDA
Booneville Field Office

Prentiss County has over 30,000 acres devoted to pasture with approximately 6,000 head of cattle. This is a ratio of five acres of pasture for each animal.

With improved pasture management, Prentiss County cattlemen could change this ratio to two or three acres of pasture per animal. This would increase the gross revenue of cattlemen by approximately \$1.5 million annually.

One of the most important steps in improving pastureland is to select the proper forage species for your soil type. All grasses are not suited to all soil types. More drought tolerant grasses should be planted on droughty soil, while most soils that hold moisture well is suited to most forage grasses, with the exception of bahiagrass on clay soils.

Fertilizer and lime should be applied according to a soil test. If no soil test has been made, apply 400 pounds of 13-13-13 per acre this spring. If additional forage is needed, apply 200 pound of ammonium nitrate per acre later in the summer. On most soil, lime should be applied at the rate of one ton

per acre every three years.

Weed control will also help improve forage yields. Cattle will not graze weeds, yet the weeds will use as much or more moisture and nutrients as will the forage plants. Weeds should be controlled as early as possible by the use of the proper herbicides or by clipping.

Rotational grazing will

also provide more and better forages by forcing cattle to graze evenly and not leave forage growing around manure piles. Rotational grazing also permits grazing of the forage when it is in its most nutritional stage.

By following these four basic pasture management practices: proper species and site selection, fertilization and liming,

weed control and rotational grazing most cattlemen can double their forage production and stocking rates while at the same time provide better ground cover and soil protection.

For assistance in developing a pasture management system on your farm contact the Soil Conservation Service at 728-3544.

HEADACHES

We all get headaches, it's a part of living. But when they start to control your life it's time to get something done.

There is a specialty clinic, in this area, that is very effective in treating problem headaches. The basic success in effectively treating these problem headaches comes from locating the underlying cause and correcting it, not just covering up the pain. The latest diagnostic equipment and techniques are used to locate the underlying cause of your problem. Then, once the cause is located, the most up-to-date Chiropractic techniques are used for correction. Join the millions of Americans each year that enjoy good health through the wonders of Chiropractic.

WE ACCEPT INSURANCE

Health Insurance, Automobile and Accident Insurance.

Our modern business office simplifies your insurance paper work and allows us to treat your condition at little or no cost to you.

On The Job Insurance
Workmen's Compensation
Insurance

FOR HELP CALL

728-8456

DR. MICHAEL J. REAM

208 First Street

Booneville, Ms. 38829

TIEMPO RADIAL SALE

Save Big Now Thru Saturday!

SALE ON ALL SEASON RADIAL'S

- All-season traction with over 10,000 biting edges.
- Gas saving steel-belted radial construction.

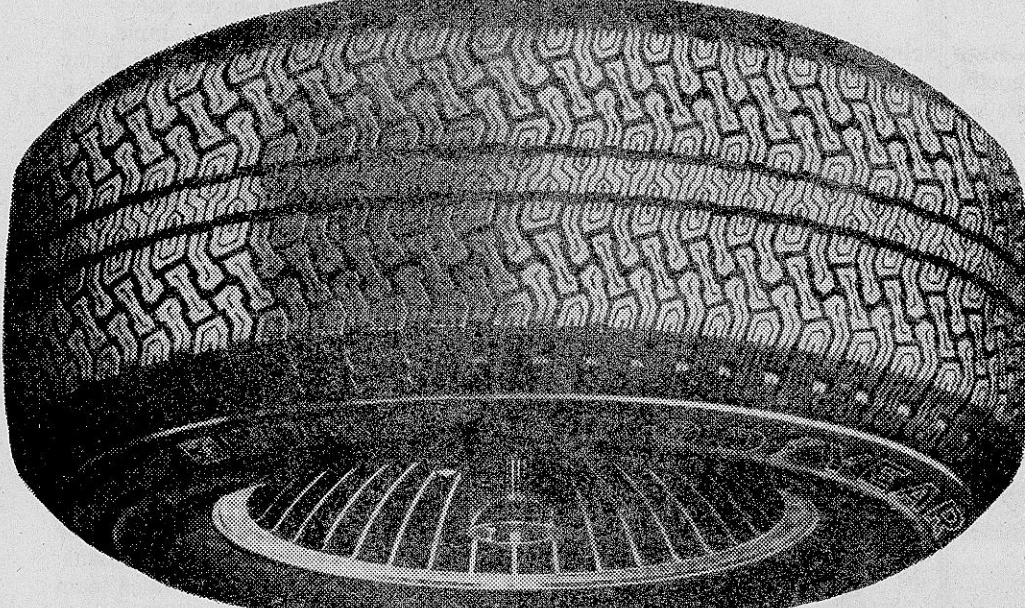
\$45

RAIN CHECK - If we sell out of your size we will issue you a rain check, assuring future delivery at the advertised price.

Per Tire
P185/80R13 Blackwall:
Plus \$1.52 FET.
No Trade Needed.

Whitewall Size	Sale Price Per Tire	Plus FET. No Trade Needed.
P185/80R13	\$57.00	\$1.91
P195/75R14	\$66.00	\$2.16
P215/75R14	\$71.00	\$2.47
P225/75R14	\$74.00	\$2.61
P205/75R15	\$70.00	\$2.42
P225/75R15	\$76.00	\$2.73

Sale Ends Sat. Night



FOUR-WHEELER DEALS SAVE ON TRACKER A-T

- One All-Terrain tire for four-wheel drive.
- Four-ply, triple-tempered polyester cord for toughness.
- Smooth driving on the road, heavy-duty traction off the road.

\$84

Per Tire
Outline White
Letter Size 9-15
L.B.B. plus \$3.67
FET. No trade
needed.

Size	Sidewall	Load Range	SALE PRICE PER TIRE	Plus FET. No trade needed.
10-15	OWL	B	\$89.00	\$4.30
11-15	OWL	B	\$91.00	\$4.51

Sale Ends Sat. Night

POWER STREAK II ONE TOUGH TIRE AT A PRICE THAT'S TOUGH TO BEAT

- Our newest diagonal-ply tire.
- Individual crossplies of tough polyester for strength.
- Shoulder-gripping edges for extra bite into curves.

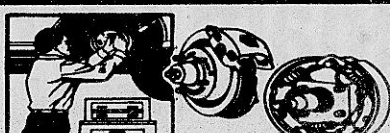
\$32

Per Tire
A78-13
Blackwall
FET. and
old tire.

Blackwall Size	Low Priced Per Tire	Plus FET. and old tire.
B78-13	\$34.60	\$1.53
C78-14	\$39.30	\$1.70
E78-14	\$40.30	\$1.90
G78-14	\$43.75	\$2.26
G78-15	\$45.15	\$2.35

Other Size Blackwalls and Whitewalls also Low Priced.

Brake Service Your Choice



\$88

Import or domestic cars. Additional parts and services extra if needed. Includes: Install new front grease seals, pack front wheel bearings, inspect hydraulic system, add fluid, road test.

2-Wheel Front Disc: Install new front brake pads, resurface front rotors, inspect calipers. OR 4-Wheel Drum: Install new brake lining and resurface all four drums. Warranted 12 months or 12,000 miles whichever comes first.

Wheel Alignment



\$19

Warranted 90 Days or 3,000 miles whichever comes first.

Imports with adjustable suspension. Includes front wheel drive, Chevettes, light trucks and cars requiring MacPherson Strut correction extra. Parts and additional services extra if needed.

Life-time Alignment \$44 We will align your car as stated above then recheck and align it every 6 months or 5,000 miles - or whenever needed. Valid only at the store where purchased. Offer does not cover the replacement of tires and/or parts that become worn or damaged. Agreement void if service work affecting the alignment is performed by any other outlet.

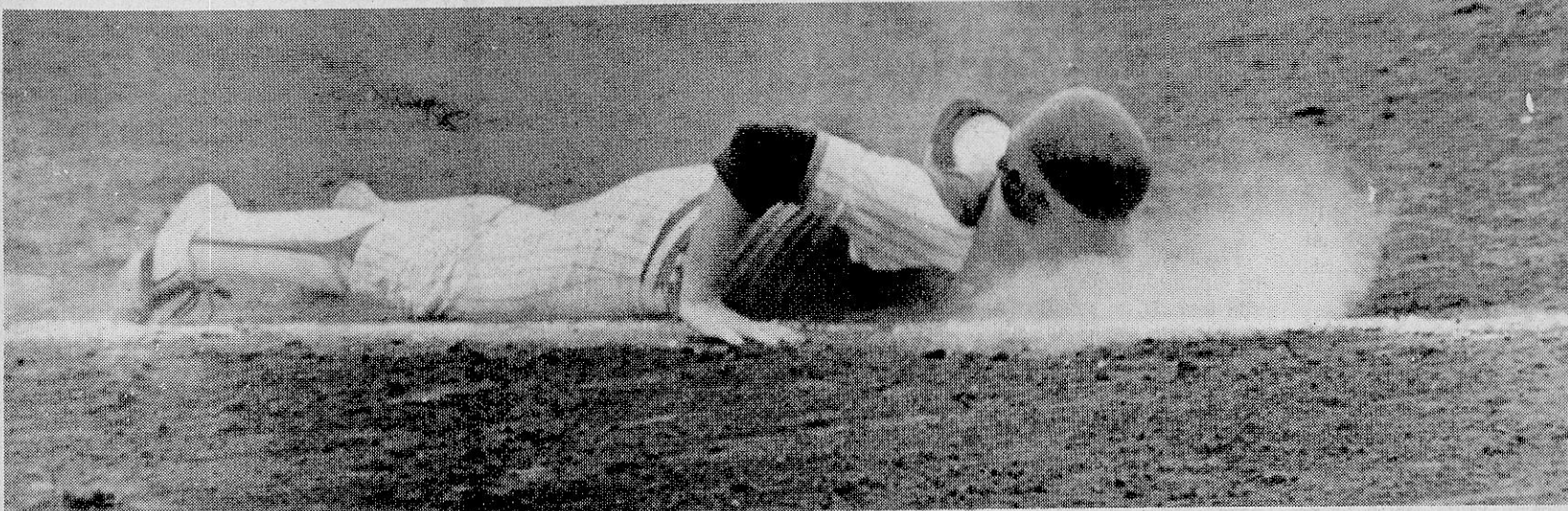
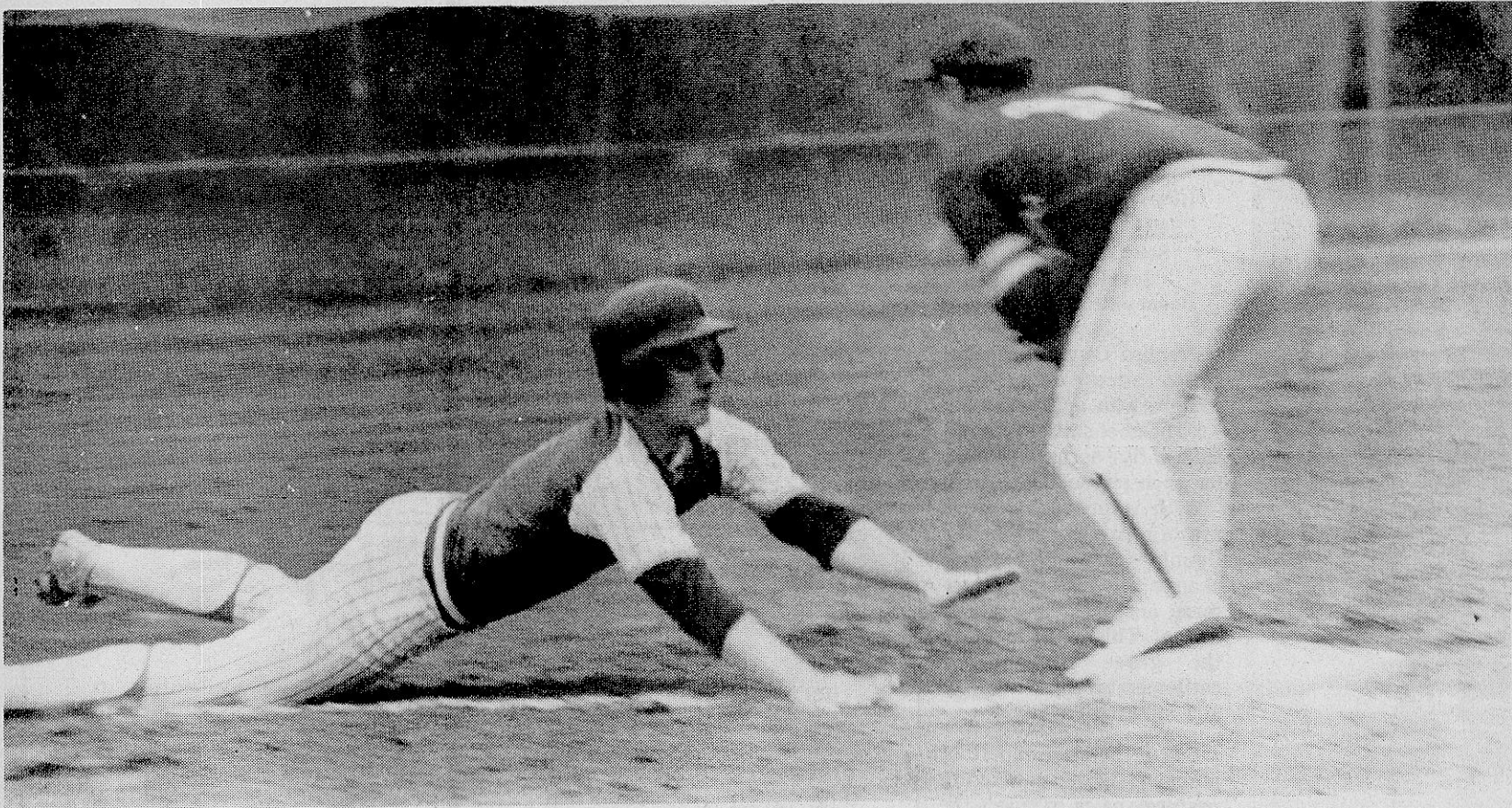
GOODYEAR

Use any of these ways to buy: Goodyear Revolving Charge Account • MasterCard • Visa • American Express • Carte Blanche • Diners Club • Cash

STORE HOURS:
MONDAY-FRIDAY 7:30 A.M.-6:00 P.M.
SATURDAY 7:30 A.M.-5:00 P.M.

THERMAN SAYLORS
MANAGER

HIGHWAY 45 NORTH
BOONEVILLE, MISS.
PHONE 728-6276



HEAD FIRST SLIDE--Booneville High School performer Rod Coggin dives head first into first base here during last Thursday's battle with Alcorn Central at the Booneville West Side Park. Whether he's out or safe is hard to determine but it sure shows that he's Charlie Hustle. (Photos by Lee Gentry)

Blue Devils Continue Hot Hitting Streak

The hot hitting Booneville High School Blue Devils notched another victory on their impressive 1982 schedule here Saturday afternoon with a very impressive 6-2 victory over Alcorn Central in Class A action at the Booneville West Side City Park.

BHS slugger and homerun king Greg Oakley was indeed the hitting star of the day. The Devil performer had a two for four day at the plate including a powerful two run homer (his fourth of the year at that time) that aided in the Blue Devil victory.

Blue Devil hurler and fireballer Mark McCreary pitched a three hitter on the afternoon to earn the Booneville victory while Central pitcher David Selser was charged with the loss.

Oakley took hitting honors on the day but right behind him was McCreary and third basemen and pitcher Dwight Wright with a two for three day at the plate while Larry Mackin and Jody Presley both had two for four performances.

The win gave the hot hitting Devils a 6-2 record (at that time) and moved them among the top teams in the Class A division.

DEVILS FALL TO RIPLEY

In a very exciting key game in Class A Ripley's Tigers took an 11-9 victory over the Devils in one of the most exciting games of Booneville history.

Ripley jumped on top with two runs in the first inning but the Devils took command with four runs in the second inning to have their only lead of the game.

Oakley led off the second inning with a solo homerun to start things off.

Ripley's big inning was the fourth when they exploded for eight runs to take command of the game. Booneville scored two more in the sixth and three in the seventh but fell two runs short of a win.

The loss was Booneville's third of the year along with six victories.



POWERFUL SWING--Booneville's Greg Oakley swings away here during last Thursday's battle against Alcorn Central. The Blue Devil slugger is one of the top hitters in the Class A division and has numerous homeruns to his credit. (Photo by Lee Gentry)

Banner-Independent Sports News

Edited By Lee Gentry

Tuesday Is Good Day For BHS Teams

Booneville High School had an outstanding day on Tuesday of this week in all phases of it's spring sports program.

Starting with the red hot baseballers Booneville Blue Devils notched another win on the boards with a 6-0 victory over Baldwin's Bearcats. Both Ray Holloway and Mark McCreary hit homeruns to lead in the victory the Devils play here Friday at 4:00 against Saltillo.

The BHS girls track team took top honors in the Class A division of the Gazette Relays at New Albany and to top off the day's activities the Booneville tennis team took a 3-2 victory over Alcorn Central.

Action on the spring circuits continues this week with a hot and heavy pace.



TINA ON THE JOB--Northeast batgirl Tina Davis of Belmont is shown on the job here during a recent Northeast Tiger outing at the Booneville West Side Park. Tina, who is a freshman at NE is one of 5 batgirls on the squad. (Photo by Lee Gentry)

By Lee Gentry Sports Editor

Strict 'Lee' Speaking

I've heard of everything now. Yep I've heard it all.

While visiting Wheeler High School Tuesday morning what I saw when I walked into the gym really amazed me.

I'm going to try to explain just what type sporting event that went on but if anyone who was there notices I've made a few mistakes then please overlook it.

To start things off the entire school was involved in a field day event at the local gym and the activities that went on was indeed a little on the unique side.

To give you one major example, one event involved bananas (sounds funny already doesn't it). Yep you heard it bananas. I didn't believe it either.

The students formed teams (classes such as freshmen, sophomores, juniors and seniors) and competed against each other in this banana race or something close to that.

Each line was given a banana to pass between themselves. Here's the way it went. When the whistle was blown or the gun went off, or whatever, the teams started the action. The person in front of the line (some 7 or 8 persons per line) passed the banana over their heads to the next person and so on till they reach the end of the line. After the banana went to the end the person ran to the front of the line and then proceed to eat the banana. The race was then on to see which team could eat the banana the quickest, race to the far end of the gym throw the banana peel in a wastecan located at the other end and then return back as fast as they could.

Believe me this is as fun to participate as it is to watch. Everyone seem to be enjoying themselves alot.

As most everyone knows we have a monkey here that shows up during football season called Pigskin Pete who predicts football scores. Well Pigskin (or knucklehead as I like to call him) you would have went wild with all those bananas there but I don't think you would have qualified since you have too many arms.

I ate some of the bananas that were rejects on the day and for some reason I had this sudden urge to go out and climb a tree and swing. I wonder why.....

This is just one event that went on during the day. Others included a twinkie eating contest, basketball freethrow shooting contest and the list goes on and on.

I can assure you that the students at Wheeler High School will remember that day for quite sometime to come.

OAKLEY HAS HOT HAND

A tip of the hat goes out to Booneville baseball slugger Greg Oakley who is currently on a homerun serge. It marks the first time in the history of Booneville High School that a local player has hit em over the fence this offer.

Oakley has hit some 5 or six roundtrippers thusfar this season (it's hard to keep count) and the season is only half over. Several of the homeruns have come in key situations for the Devils. So Greg, keep up the good work.

NEW FIELD WORK IS ON

A brand new baseball field on the East Side of town is now under construction and should be ready for league play by the summer Little League season.

Several teams have been formed and will compete in Little League competition this summer as well as junior leagues ect, ect.

The field is located on the Highway 30-4 Bypass across from Dixieland Skate Center. Ronnie Wheeler is in charge of the construction.

Phone In Your Sports Results 728-6214

Windham Ford

HIGHWAY 45, BALDWIN, MISS.

USED TRUCK SALE

3- 1980 Model Courier
2- 1981 Model Courier

1980 150 4-WHEEL DRIVE, SHORT WHEEL BASE

CALL: DAVE KENDRICK 728-9636

FINANCING AVAILABLE WITH APPROVED CREDIT

Campus Country Restaurant

SPECIALS FRIDAY - SATURDAY

1 DOZ. CHICKEN LIVERS \$3.00

1 1/2 DOZ. CHICKEN LIVERS \$2.25

WITH ALL THE TRIMMINGS

SEAFOOD PLATTER - \$5.00

TRY OUR

- Boiled Shrimp
- Stuffed Crab
- Home-Made Pies

Highway 45 North Booneville, Miss. 728-7706

Owner & Operator Idabel Vandevander

DAVIDSON CHEVROLET

Hwy. 45 North-Booneville, Ms.

Makes Good Things Happen

1978 CAPRICE LANDAU 2-DOOR, LOADED

1980 PARK AVENUE BUICK POWER LOADED, EXTRA CLEAN

1980 CHEVETTE 4-DOOR, AUTOMATIC, AIR, AM/FM RADIO, 1 OWNER

1981 MALIBU CLASSIC STATION WAGON LOCAL ONE OWNER, POWER STEERING, & BRAKES, AIR

1982 MONTE CARLO DEISEL 6,000 MILES, GM EXECUTIVE CAR

1982 BUICK REGAL 4-DOOR, SEDAN, LOADED, EXECUTIVE CAR

1980 TOYOTA COROLLA 2-DOOR, COUPE, 4-SPEED, AM/FM STEREO, 1 OWNER, LOW MILEAGE

1979 PONTIAC LEMANS 4-DOOR, POWER STEERING & BRAKES, AIR

MANY OTHER CARS TO CHOOSE FROM

MR. GOODWRENCH

GM QUALITY SERVICE PARTS

GENERAL MOTORS PARTS DIVISION

In Benefit Game

Coaches Upset Seniors.....

Upsets occur very seldom in many sports and certainly upsets of this type occur even more seldom. Seldom in fact that a betting man would have bet the ranch and lost here Monday night when the Prentiss County Coaches upset the County's senior players 45-42 (or somewhere near that) and

the crowd went wild. This marks the first time in the history of the tournament that this has happened. The girls game went pretty much as expected when the area senior girls took an easy 45-16 victory over the teachers who were somewhat handicapped since they started the game with only three players.

Some more arrived later but it still wasn't enough as the seniors dominated the game. In boys action, the seniors did give some special treatment to the older folks like not running many fast breaks, not guarding in the backcourt and the list goes on and on. But the fact remains that the coaches did seek out a three point victory.

Thrasher coach Jacky Rowsey was the leading scorer for the coaches while in girls play Lynette Miller, Regina Holland and Marti Moore paced the senior girls to the win. All proceeds of the event went to the American Cancer Society. This marks the third year for the All-Star Game.

Big Field Expected For Shrine Softball Tourney

Applications are beginning to pile in now for the Second Annual Shrine Softball Tournament slated for April 29th-May 1st at the

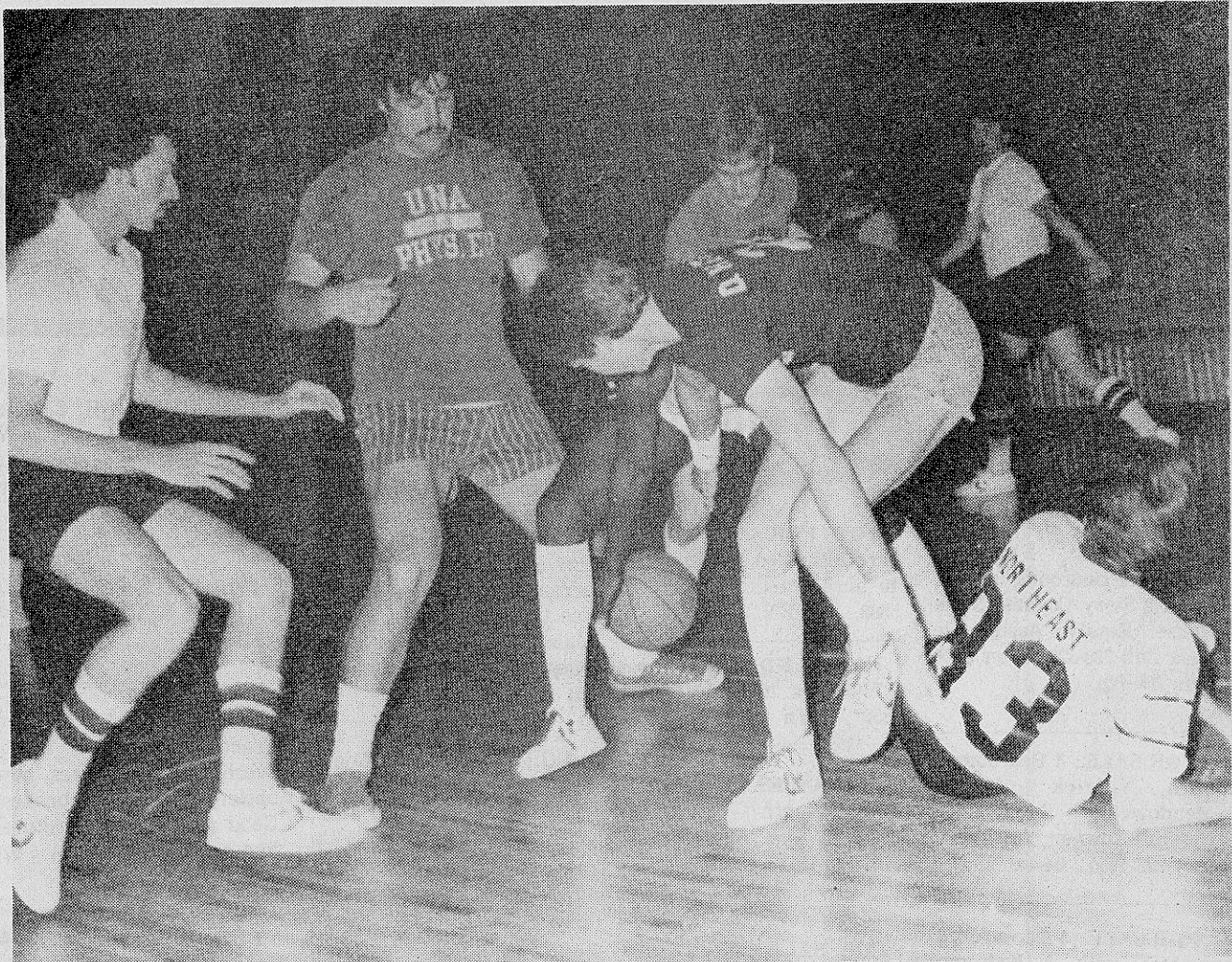
Booneville West Side City Park. Bill Ward, who is the Prentiss County Shrine Club

president, will also serve as chairman for the tournament and he has already stated on numerous occasions that this year's

tournament is expected to be bigger and better than ever. Applications are now being accepted for teams for the tournament and Ward said that coaches of the teams can enter the tournament by simply contacting him at Northeast Junior College or at his home.



GETTING READY FOR TOURNAMENT TIME--From left to right, Earl Duboise and Jessie Campbell, local shriners, are shown here with ball, bat and glove, preparing for the 1982 Second Annual Shriner's Softball Tournament schedule April 29th - May 1st at the Booneville West Side Park. (Photo by Lee Gentry)



LOOSE BALL--These coaches and senior performers battle for the loose ball here in Monday night's All-Star game held at the Booneville Gym. The coaches beat the seniors in an upset. (Photo by Lee Gentry)

NE To Compete In Region 23

Effective August 1, 1982 the Northeast Mississippi Junior College will no longer be a member of the Region Seven Conference it was announced this week by athletic director Bill Ward. All junior colleges in Mississippi have joined forces with two schools in Louisiana and formed a new Region 23 conference which will follow all rules of the National Junior College Athletic Association. To date there are 18 junior colleges in the state plus two other schools that will participate in addition to the two schools in Louisiana which are Degott and a branch of LSU at Alexandria. Northeast will compete in the Region 23 Tournament at the conclusion of their regular season and the pairings will be similar like in the past. When the champion of the Region 23 emerges however the winner there will have to meet the Region 22 winner before they can go on to the National Tournament.

Bill Ward said he was indeed in favor of the new league. "I think as far as Northeast's viewpoint it will be a great advantage to us. For one thing we should receive much more Region publicity since most of the teams (in fact all but two) are in the state of Mississippi and the director is now from North Mississippi who will vote for us in the National polls," Ward said. Ward went on to say that the new Region 23 league would benefit all phases of the sports program. "Playing teams from the State that we've already played against during the regular season should be a big advantage to us. All in all I think it's the best thing that could happen to us," Ward said. Northeast will play the remainder of the spring sports session in the Region 7 Conference and will assume their new duties beginning August 1st.

A huge tournament card is expected this year with trophies to be presented to first, second and third place finishers in each classification brackets. The tournament's premiere year last year was termed highly successful according to coach Ward and this year's event is expected to be even more so this time around. What puts this tourney ahead of most others and average tournaments is that the proceeds of the tournament will go to a very worthy cause to burned and cripple children, which is the National Trademark for the Shriner organization. What better way to spend a weekend. Seeing some of the best softball action to be found anywhere and knowing that the money spent will go to this very worthy cause. Tournament entry specifications are simple. All a team has to do to enter is to contact the Shriners or coach Ward to register and pay the registration fee. The fee this year is \$50 per team plus a team has to furnish two softballs. Additional information concerning the tournament or registration may be obtained from coach Bill Ward at 728-7751 or 728-4082. Mark the date April 29th on your calendar and be sure and make plans to attend.

SNAPPER HI-VAC™ RIDERS BAG WHEN IT'S DRY... AND WHEN IT'S NOT.

Just about any mower can bag grass cuttings when it's dry but there is only one rider which operates efficiently during high moisture conditions. That mower is the SNAPPER Hi-Vac™ rider. It has "high vacuum" power for vacuuming cuttings, leaves and litter into an optional 6 bu. catcher or trailing 30 bu. mounted catcher for hauling tops, firewood, etc.

SNAPPER mowers are worth more because they do more and their price is competitive with other quality mowers.

Shown with optional 6 bu. catcher. Shown with optional 30 bu. grass catcher.

MURPHY'S INTERNATIONAL
1205 NORTH 2nd STREET - BOONEVILLE, MISS.
Distributed by: RCH Distributors, Inc. 3140 Carrier St., Memphis, TN, Ph. 901 345-3100 A subsidiary of The Richman Crosby Hays Company

NE Spring Action Returns

Spring action returns to full swing here this week after a week's layoff for the Spring and Easter Holidays. Action this week starts today with a track meet beginning at 2 p.m. when the Northeast Mississippi Junior College track team visits Hernando. On Saturday, Northeast's Tiger baseball team will again be on the road when they travel to Itawamba in a rivalry game beginning at 1:30 against the Indians while the next NE action will be next Monday afternoon when the Tiger tennis team will be here at 1 p.m. hosting John C. Calhoun in women's action while a day later, Northeast's men's squad will travel to John Calhoun in a road skirmish. Also slated for Tuesday will be a softball contest when the Northeast's lady softballers will battle Blue Mountain on the road with a slugoff time set at 2:30. Rounding out the week on Wednesday, Northeast's tracksters has another meet at Holmes in Goodman while the lady softballers will be hosting Coahoma and the Northeast tennis squad will open State Tournament play at Meridian.

HOUSTON'S AMOCO SPRING TIRE SALE!

MICHELIN TIRES

155-13 \$61 ⁰⁰	205-75R14 \$98 ⁰⁰
169-80R13 \$70 ⁰⁰	215-15 \$104 ⁰⁰
165-75R13 \$69 ⁰⁰	FR78-14 \$93 ⁰⁰
185-75R14 \$90 ⁵⁰	6R78-14 \$100 ⁸³
195-75R14 \$96 ⁰⁰	750-16 \$124 ⁵⁰

SALES TAX INCLUDED IN PRICES ABOVE

ALL TIRES ON SALE

- B.F. GOODRICH ● REYNOLDS ● MICHELIN
- FREE MOUNTING ● FREE BALANCING

SEE US FOR YOUR B.F. GOODRICH RICE AND CANE TRACTOR TIRES

- WE COMPUTER BALANCE CAR TIRES
- SPIN BALANCE HEAVY TRUCK TIRES

HOUSTON'S AMOCO

101 SECOND STREET — HIGHWAY 45 SOUTH — PHONE 728-5632

Kentucky Fried Chicken

HIGHWAY 45 NORTH — BOONEVILLE, MISS.
728-4782

COUPON

Buy The Colonel's SNACK BOX

2-Pieces KFC, Order Potatoes With Gravy
1-Roll

\$1.39 SAVE 50¢
Per Order

2-Orders Per Coupon

GOOD at Kentucky Fried Chicken In Booneville Only. 4-21-82. EXPIRES

Hot Buttered Corn-On-The-Cob

39¢ Each **3/\$1.00**

9-PIECE DINNER

Large Size Of Creamed Potatoes With Gravy
—or—
Large Size Of Zesty Bar-B-Que Beans
20 Hot Fresh Rolls

\$7.89 SAVE \$1.00
ONLY NO COUPON NECESSARY

Good at Kentucky Fried Chicken
BOONEVILLE — 728-4782 NEW ALBANY — 354-9697

We Don't Take Trade-In's But

We Have Lots Of Good Buys In The Classified Ads

CARDS OF THANKS

CARD OF THANKS

The family of Wava Parker wishes to thank all of their friends of Booneville and Blackland for the flowers and most of all your prayers. May God bless each of you.

Mary Parker
Dorothy Storey Mayo
and Family

CARD OF THANKS

It is impossible to thank everyone personally, so we write this little thank you to everyone; friends, relatives, neighbors, for each kindness shown us during the loss of our home.

May God Bless you
Henry and Maxine Bearden
and Pat

FIBERGLASS PANELS

For Greenhouses, patios, mobile home underpinning, 10-15-20-25' sq. ft. 862-2021, Fulton, Ms. 38843

LAND POSTED

ALL LAND OWNED, MANAGED OR LEASED BY PERSONS LISTED BELOW IS POSTED AGAINST HUNTING, FISHING, TRESPASSING, LIVESTOCK RUNNING AT LARGE AND DUMPING GARBAGE.

- Dennis Brown 4-12-82
Dwight Brown 4-12-82
Clyde Higgason 2-14-83
R. C. Cartwright 4-12-82
Gladys Cartwright 2-26-83
John Wayne Stutts 12-17-82
Judy Alexander Witt 12-17-82
John W. Smith 11-19-82
Robert Huguley 4-16-83
Donald Tigrett 10-29-82
R. L. Weatherbee 5-23-82
Harold Franks 10-12-82
J. O. Wheeler 6-1-82
Mrs. Bolivar Rogers 2-18-83
Roscoe Ricks 9-18-82
Mrs. Herbert Hardy 9-18-82
Roy Miles 7-9-82
Vance Jones 7-9-82
L. W. Walden 10-5-82
Ethel Hurd 10-2-82
Sylvester Smith 3-11-83
Hubert H. Lambert 4-8-83
Luther Moore 1-7-83
Nellie Moore 1-7-83
R. C. Rice 10-15-82
Martha H. Furtick 2-4-83
E.H. Stringer 2-4-83
H.H. Green 1-7-83
J. R. Counce 10-15-82

- Mrs. Travis H. Taylor 9-10-82
Mrs. Roy McElveya 1-7-83
Martha Holloway Cartwright 1-14-83
Hubert Tennyson 10-15-82
Ardis M. Harris 10-1-82
E. L. Moore 4-29-82
Vernon Jones 12-3-82
Lex Houston 2-4-83
Jelena Green 2-4-83
Mrs. Earl White 1-21-83
J.G. Cleveland 1-21-83
W.D. Kernell 1-28-83
Louise Putt 11-19-82
Johnny Sweeney 11-19-82
Leland Davis 11-19-82
Wayne Strickland 11-19-82
Ellis Thornton 11-19-82
Orlander Lancaster 11-19-82
Ellie Baggett 11-19-82
Mrs. Oliver Eaton 11-19-82
Mrs. Hugh Donald Eaton 11-19-82
Hoyle Eaton 11-19-82
W.W. Jumper 11-19-82
Mrs. Rubin Micheals 11-19-82
Noble Williams 11-24-82
Willie Cox 11-25-82

Legal Notice

NOTICE TO CREDITORS
No. 13,305
IN RE: ESTATE OF JOHN BUNNYAN GAULT
No. 13,305
Letters Testamentary having been granted on the 30th day of March, 1982 by the Chancery Court of Prentiss County, Mississippi, to the undersigned upon the estate of JOHN BUNNYAN GAULT, deceased, notice is hereby given to all persons having claims against said estate to present the same to the Clerk of the said Court for probate and registration, according to law, within ninety (90) days from the date of first publication or they will be forever barred.
This 30th day of March, 1982
NORAELEN SMITH GAULT
GIFORD, MOORE & BOLEN
SOLICITORS FOR EXECUTRIX
April 1, 8, 15, 22, 1982
05-4TP

Legal Notice

ORDER
WHEREAS, the Prentiss County Board of Supervisors meeting in regular session on the 5th day of April, 1982, finds as follows:

WHEREAS, a motion was made and seconded that due to the resignation of Maxine Bearden as provider of food for the prisoners in the Prentiss County Jail that notice be given by publication that the Board of Supervisors will receive bids on April 23, 1982 for meals to be served to the inmates of the Prentiss County Jail. Said bids will be opened at 10:00 a.m. on the aforesaid date, and the provision of said meals shall be from April 23, 1982 until September 30, 1982. Further, said bids shall set forth the number of meals to be provided daily and state that each meal shall be nutritious and well-balanced.

A vote was taken with all districts present, and the motion was unanimously accepted.

ORDERED on this 5th day of April, 1982.

J. P. DAVIS - President of the Board of Supervisors of Prentiss County, Mississippi.

April 8, 15, & 22, 1982
04-3TC

Legal Notice

NOTICE TO CREDITORS
No. 13,324
IN RE: ESTATE OF HENRIETTA BUSH
No. 13,324
Letters Testamentary having been granted on the 18th day of March, 1982 by the Chancery Court of Prentiss County, Mississippi, to the undersigned upon the estate of Henrietta Bush, deceased, notice is hereby given to all persons having claims against said estate to present the same to the Clerk of the said Court for probate and registration, according to law, within ninety (90) days from the date of first publication or they will be forever barred.
This 18th day of March, 1982
CHARLES J. BUSH
GIFORD, MOORE & BOLEN
SOLICITORS FOR EXECUTOR
March 25, April 1, 8 & 15, 1982
04-4TP

Legal Notice

ORDER
WHEREAS, the Board of Supervisors of Prentiss County, Mississippi meeting in regular session on the 1st day of March, 1982, and again in recessed session on the 29th day of March, 1982, finds as follows:

WHEREAS, motion was made and seconded that the Board of Supervisors of Prentiss County, Mississippi, dispose of two vans, previously used in the Prentiss County Senior Citizens Program and now having been replaced and listed as surplus property, pursuant to Section 19-7-5 of the Mississippi Code of 1972 as Annotated and Recompiled. These being the same vans previously advertised for sale and listed as three (3) vans and the County finding it in the best interest to retain ownership of one (1) of the vans and make it available to the Prentiss County school system for the transportation of deaf students. And further that the Board advise for sale the aforementioned vehicles more particularly described as:

- (1) One (1) 1978 Ford van, series E23, serial number E23HHB4872.
(2) One (1) 1977 Chevrolet van, serial number CGR367V162920

Further that the sale of this surplus property is in the best interest of Prentiss County. Bids will be received in the office of the Chancery Clerk of Prentiss County, Mississippi, and opened at 10:00 a.m. on April 16th, 1982, in the Prentiss County Board Room. The Board reserved the right to reject any and all bids.

A vote was taken with all 5 Districts present and motion carried unanimously.

ORDERED on this 29 day of March, 1982.

J. P. DAVIS - President of the Board of Supervisors of Prentiss County, Mississippi

April 1, 8, 15, 1982
05-3TC

PRENTISS DRIVE-IN THEATRE
FRI-SAT-SUN. — 7:00 P.M.
(1) Dirt Racing
THRILLS ACTION PACKED
(2)
NOW, THEREFORE, I, R. Michael Bolen, Substituted Trustee, in the said Deed of Trust will on the 23rd day of April, 1982, offer for sale at public outcry, and sell within legal hours (being between the hours of 11:00 a.m. and 4:00 p.m.) at the West door of the County Courthouse in the County of Prentiss, Booneville, Mississippi, to the highest and best bidder for cash, the following described property lying and being situated in Prentiss County, Mississippi, to-wit:

Part of Lot 1 of Block 2 of the Bell Survey of the Town of Wheeler, Mississippi bound as follows: Beginning at the Northwest corner of the said lot and run in a Southerly direction with the West boundary 270 feet; thence East parallel with the North boundary 119 feet, more or less, to the East boundary of Grantor's land; thence North 290 feet, thence West along the North boundary of said lot 119 feet, more or less, to the point of beginning.

I will convey only such title as is vested in me as Substituted Trustee.

WITNESS MY SIGNATURE on this the 29th day of March, 1982.

R. MICHAEL BOLEN,
SUBSTITUTED TRUSTEE
April 1, 8, 15, 22, 1982
05-4TC

TAPS
GEORGE C. SCOTT
TIMOTHY HUTTON

College Cinema
PHONE 728-9062
STARTS TONIGHT — 7:15 P.M.
What happened to him should happen to you.
Private Lessons
Also Showing
"Final Exam" (R) HORROR
THURSDAY-FRIDAY-SATURDAY
SUNDAY MATINEE 2:00 P.M.
BARGAIN NIGHTS — TUESDAY & WEDNESDAY ONLY
— COMING —
Seduction, Porky's, Robin Hood, Vice Squad, Some Kind of Hero

Legal Notice

TRUSTEE'S NOTICE OF SALE
WHEREAS, on October 9, 1980, Jerry W. Manley executed his certain Deed of Trust to Eugene B. Gifford, Jr., Trustee, for the benefit of The Peoples Bank and Trust Company as shown in Trust Deed Book 128, Page 376, Chancery Clerk's Office, Prentiss County, Mississippi; and
WHEREAS, on January 2, 1981, Jerry W. Manley and wife, Brenda Manley, executed their certain Deed of Trust to Eugene B. Gifford, Jr., Trustee, for the benefit of The Peoples Bank and Trust Company as shown in Trust Deed Book 121, Page 376, Chancery Clerk's Office, Prentiss County, Mississippi; and
WHEREAS, default having been made in the terms and conditions of said Deeds of Trust and the entire debt secured thereby having been declared due and payable in accordance with the terms of said Deeds of Trust and the legal holder of said Deeds of Trust, The Peoples Bank and Trust Company, Booneville, Mississippi, having requested the undersigned to execute this trust and sell said land for the purpose of raising the sums thereunder, together with attorney's fees, trustee's fees and expense of sale.

NOW, THEREFORE, I, Eugene B. Gifford, Jr., Trustee in the said Deeds of Trust will on the 16th day of April, 1982, offer for sale at public outcry, and sell within legal hours (being between the hours of 11:00 a.m. and 4:00 p.m.) at the West door of the County Courthouse in the County of Prentiss, Booneville, Mississippi, to the highest and best bidder for cash, the following described property lying and being situated in Prentiss County, Mississippi, to-wit:

Part of the South Half of Section 14, Township 4 South, Range 7 East, described as follows: Beginning at the Southeast corner of the Southwest Quarter of Section 14, Township 4, Range 7, and run thence East 602.25 feet; thence North 551.98 feet to the center of a public road; thence with said road as follows: North 88 degrees 10 minutes East 400 feet to the point of beginning; thence North 88 degrees 10 minutes East for 308 feet; thence South 200 feet; thence West parallel with said road for 308 feet; thence North 200 feet to the point of beginning.

I will convey only such title as is vested in me as Trustee.

WITNESS MY SIGNATURE on this the 22nd day of March, 1982.

EUGENE B. GIFFORD, JR.,
TRUSTEE
March 25, April 1, 8, 15, 1982
04-4TC

Legal Notice

SUBSTITUTED TRUSTEE'S NOTICE OF SALE

WHEREAS, on May 12, 1978, Joe G. Oswalt and wife, Betty E. Oswalt, and Donald R. Oswalt and wife, Lynn Oswalt, executed their certain Deed of Trust for the benefit of Baldwin Finance Company, Inc. as shown in Trust Deed Book 116, Pages 516-517, Chancery Clerk's Office, Prentiss County, Mississippi; and
WHEREAS, on March 16, 1982, R. Michael Bolen, was appointed Substituted Trustee on the above mentioned Deed of Trust and said Substitution is of record in Trust Deed Book 135, Page 1, Chancery Clerk's Office, Prentiss County, Mississippi, and

WHEREAS, default having been made in the terms and conditions of said Deed of Trust and the entire debt secured thereby having been declared due and payable in accordance with the terms of said Deed of Trust and the legal holder of said Deed of Trust, Baldwin Finance Company, Inc. having requested the undersigned Substituted Trustee to execute this trust and sell said land for the purpose of raising the sums thereunder, together with attorney's fees, substituted trustee's fees and expense of sale.

NOW, THEREFORE, I, R. Michael Bolen, Substituted Trustee, in the said Deed of Trust will on the 23rd day of April, 1982, offer for sale at public outcry, and sell within legal hours (being between the hours of 11:00 a.m. and 4:00 p.m.) at the West door of the County Courthouse in the County of Prentiss, Booneville, Mississippi, to the highest and best bidder for cash, the following described property lying and being situated in Prentiss County, Mississippi, to-wit:

Part of Lot 1 of Block 2 of the Bell Survey of the Town of Wheeler, Mississippi bound as follows: Beginning at the Northwest corner of the said lot and run in a Southerly direction with the West boundary 270 feet; thence East parallel with the North boundary 119 feet, more or less, to the East boundary of Grantor's land; thence North 290 feet, thence West along the North boundary of said lot 119 feet, more or less, to the point of beginning.

I will convey only such title as is vested in me as Substituted Trustee.

WITNESS MY SIGNATURE on this the 29th day of March, 1982.

R. MICHAEL BOLEN,
SUBSTITUTED TRUSTEE
April 1, 8, 15, 22, 1982
05-4TC

Legal Notice

**ADOPITION NO. 184
NON-RESIDENT NOTICE
CAUSE NO. 184
STATE OF MISSISSIPPI
TO, CATHERINE LYDIA MILLER,
a non-resident citizen of the State of Mississippi, whose last known street address and place of abode was 4242 N. Sheridan Road, Apartment Number 514, Chicago, Illinois 60613; and that the said Catherine Lydia Miller is a non-resident citizen of the State of Mississippi.**
You are hereby commanded to be and appear before this Honorable Chancery Court at 10:00 A.M. on the 21st day of May, 1982, in the Court Room of the Tishomingo County Courthouse, Iuka, Tishomingo County, Mississippi, to defend the suit in said Court wherein you are the defendant.
This 29th day of March, 1982.
PHILLIP COLE,
CHANCERY CLERK
By Irma Robinson D.C.
TOMMY DEXTER CADLE
Attorney for Petitioners
April 8, 15, 22, 1982
05-4TP

Legal Notice

NOTICE OF SALE

WHEREAS, the United States of America, acting by and through the Farmers Home Administration, United States Department of Agriculture, is the owner and holder of the following real estate deed(s) of trust, securing an indebtedness therein mentioned and covering certain real estate hereinafter described located in Prentiss County, Mississippi, said deed(s) of trust being duly recorded in the office of the Chancery Clerk in and for said County and State:

GRANTOR(S)
Dorothy L. Regin
DATE EXECUTED
April 24, 1979
TRUST DEED BOOK
121
PAGE
179-182

WHEREAS, default has occurred in the payment of the indebtedness secured by said deed(s) of trust, and the United States of America, as Beneficiary, has authorized and instructed me as Substituted Trustee, to foreclose said deed(s) of trust by advertisement and sale at public auction in accordance with the statutes made and provided therefor. THEREFORE, notice is hereby given that pursuant to the power of sale contained in said deed(s) of trust and in accordance with the statutes made and provided therefor, the said deed(s) of trust will be foreclosed and the property covered thereby and hereinafter described will be sold at public auction to the highest bidder for cash at the front door of the county courthouse in the town of Booneville, Mississippi, in the aforesaid County at 11:00 AM, on the 10th day of May 1982, to satisfy the indebtedness now due under and secured by said deed(s) of trust.

The premises to be sold are described as:

Lot Number 1 of the Meadowview Subdivision as shown by the official Map, Plat and Survey of the said subdivision, recorded in the Office of the Chancery Clerk of Prentiss County, Mississippi in Plat Book 1 at Page 44, same being located in Part of the Southwest Quarter of Section 2, Township 5 South, Range 7 East.

SUBJECT TO Protective Covenants recorded in Plat Book 1 at page 44 in said Chancery Clerk's Office.

LESS AND EXCEPT an undivided one-half interest in all minerals heretofore reserved by the Federal Land Bank of New Orleans.

Marion H. Mills
Substitute Trustee
Duly authorized to act in the premises by instrument dated February 1, 1982, and recorded in Book 134, Page 292, of the records of the Chancery Clerk of said County and State
April 15, 22, 29, May 6, 1982
07-4TC

Legal Notice

**NON-RESIDENT SUMMONS
IN RE: ADOPTION OF A MINOR
No. 182
TO THE FOLLOWING NAMED DEFENDANT WHOSE RESPECTIVE ADDRESS AND AFTER DILIGENT SEARCH AND INQUIRY IS LISTED BELOW:**

JAMES EDWARD LOGGINS
Hillman, Tennessee 38558
Route 1
You are hereby summoned to appear at 10:00 a.m. on May 3, 1982, before the Chancery Court of Prentiss County, Mississippi, at the Courthouse in Booneville, Mississippi, to then and there show cause, if any you can, why the Petition for Adoption should not be granted.

This 1st day of April, 1982.
PHILLIP COLE, CHANCERY CLERK
By Irma Robinson D.C.
April 15, 22, & 29, 1982
06-4TP

Legal Notice

NOTICE

Notice is hereby given that The Mississippi Optometric, Inc. has been organized pursuant to the provisions of the Mississippi Business Corporation Act.

The incorporators are: John R. White, Sr., 507 West Main Street, Baldwin, Mississippi 38624, and Ann White, 507 West Main Street, Baldwin, Mississippi 38624.

The specific purposes for which the corporation is organized are:

1. To engage in the printing and publishing and selling of a periodical newspaper, magazine and newsletter and other advertising media relating to the practice and business of Optometry, and to offer and solicit all types of advertising service in connection therewith. To perform any other operation that is necessary and the customary connection with the overall operation of this type of business so long as these activities are not in violation of the laws of the State of Mississippi.

Capitalization requirements: Five thousand (5000) shares of the par value of One Dollar (\$1.00) per share.

COMER AND JENKINS
Solicitors
April 15, 1982
07-1TC

Legal Notice

**IN THE Chancery COURT
Prentiss County, Booneville,
MISSISSIPPI 38629
Teresa Edwards
v.
Cecil Hinton Edwards,
Jr.**
SUMMONS
(Service by Publication: Residence Unknown)
TO: Cecil Hinton Edwards, Jr., whose last known address was unknown, but whose present residence and address is unknown. You have been made Defendant in the lawsuit filed in this Court by Teresa Edwards, Plaintiff, whose address is Route 1, Box 66 C, Baldwin, Mississippi 38624. The Complaint filed against you has initiated a civil action alleging Habitual, Cruel and Inhuman Treatment, and seeking A Divorce. You are required to mail or hand deliver a copy of a written Answer either admitting or denying each allegation in the Complaint to Rodney E. Shands, Plaintiff's Attorney, whose address is P.O. Box 892, New Albany, Mississippi 38652.

YOUR ANSWER MUST BE MAILED OR DELIVERED NOT LATER THAN THIRTY DAYS AFTER THE 22nd Day of April, 1982, WHICH IS THE DATE OF THE LAST PUBLICATION OF THIS SUMMONS. IF YOUR ANSWER IS NOT SO MAILED OR DELIVERED, A JUDGMENT BY DEFAULT MAY BE ENTERED AGAINST YOU FOR THE MONEY OR OTHER RELIEF DEMANDED IN THE COMPLAINT. You must also file the original of your Answer with the Clerk of the Court within a reasonable time afterward.
Phillip Cole
Clerk of Court
By Irma Robinson D.C.
April 8, 15, & 22, 1982
06-3TP

Legal Notice

NOTICE TO CREDITORS
No. 13,306
IN RE: ESTATE OF R.A. KIMBRELL

Letters Testamentary having been granted on the 30th day of March 1982 by the Chancery Court of Prentiss County, Mississippi, to the undersigned upon the estate of R.A. Kimbrell deceased, notice is hereby given to all persons having claims against said estate to present the same to the Clerk of the said Court for probate and registration, according to law, within ninety (90) days from the date of first publication or they will be forever barred.

This 30th day of March, 1982.
ANNA LOU MAXWELL KIMBRELL
GIFORD, MOORE & BOLEN
SOLICITORS FOR EXECUTRIX
April 1, 8, 15, 22, 1982
05-4TP

Legal Notice

NOTICE TO CREDITORS
IN RE: ESTATE OF FRANK EDGAR PARKER

Letters of Administration having been granted on the 1st day of April, 1982 by the Chancery Court of Prentiss County, Mississippi, to the undersigned upon the estate of Frank Edgar Parker, deceased, notice is hereby given to all persons having claims against said estate to present the same to the Clerk of the said Court for probate and registration, according to law, within ninety (90) days from the date of first publication or they will be forever barred.

This 1st day of April, 1982.
MARIE K. PARKER
GIFORD, MOORE & BOLEN
SOLICITORS FOR ADMINISTRATRIX
April 8, 15, 22, & 29, 1982
06-3TP

Legal Notice

**IN THE CHANCERY COURT OF PRENTISS COUNTY STATE OF MISSISSIPPI
BILLY WAYNE DAVIS,
STEPHANIE DAWN TULLIS,
MINORS, BY J.B. HILL,
NEXT FRIEND: PRENTISS COUNTY DEPARTMENT OF PUBLIC WELFARE BY J.B. HILL, DIRECTOR
PETITIONERS**

V. CIVIL ACTION, FILE NO. 13,320

IMOGENE DAVIS FILLINGIM: THE UNKNOWN PUTATIVE FATHER OF BILLY WAYNE DAVIS: JOHN WILLIAM TULLIS, JR. RESPONDENTS

SUMMONS

TO: IMOGENE DAVIS FILLINGIM, WHOSE LAST KNOWN ADDRESS IS 707 1/2 STREET, NO. 8, GULFPORT, MISSISSIPPI 39323, AND WHOSE PRESENT RESIDENCE IS UNKNOWN.

NOTICE TO RESPONDENT

YOU MUST TAKE IMMEDIATE ACTION TO PROTECT YOUR RIGHTS.

A Petition demanding termination of your parental rights, as those rights relate to the minor(s), Billy Wayne Davis, a child born August 29, 1970, in Booneville, Prentiss County, Mississippi, and that full custody, control, and authority to act on behalf of the named minor(s) be placed with Prentiss County Department of Public Welfare, has been filed against you.

You are required to mail or hand deliver a copy of a written Answer either admitting or denying each allegation in the Petition to Susan DeLancey, the attorney for the Petitioners, whose address is Post Office Box 352, 515 East Amite Street, Jackson, Mississippi 39205.

THIS ANSWER MUST BE MAILED OR DELIVERED WITHIN 30 DAYS AFTER THE DATE OF THE LAST PUBLICATION OF THIS SUMMONS. THE DATE OF THE LAST PUBLICATION OF THIS SUMMONS WILL BE APRIL 29, 1982.

You must also file the original of your Answer with the Clerk of this Court within a reasonable time afterward. The address of this Court is Prentiss County Chancery Court, County Courthouse, Booneville, Mississippi 38629.

PHILLIP COLE, Chancery Clerk
PRENTISS County, Mississippi
BY: IRMA ROBINSON, Deputy Clerk
April 15, 22, 29, 1982
07-3TC

Legal Notice

AN AMENDING ORDINANCE TO CLARIFY THE PERSONNEL POLICY AND FOR THE IMPLEMENTATION THEREOF IN THE CITY OF BOONEVILLE, MISSISSIPPI

There came on for consideration the matter of adopting an amending ordinance to the Personnel Policy heretofore adopted by the City of Booneville on September 25, 1979, in order to amend employment procedures, types of appointments, status changes, clarify working hours, holidays, annual leave, absenteeism, sick leave, maternity leave, leaves of absence, discipline, grievances, and appeals and repealing an article of the existing Personnel Policy and parts of ordinances in conflict therewith.

BE IT ORDAINED by the Board of Mayor and Aldermen of the City of Booneville, Mississippi as follows, to-wit:

SECTION ONE: That the 1979 City Personnel Policy shall be and the same is hereby amended, and said amended Personnel Policy a copy of which has this day been exhibited to and approved by the Board of Aldermen of the City of Booneville, Mississippi, shall be and the same is hereby adopted and declared effective April 6, 1982, and binding within the corporate limits of the City of Booneville, Mississippi, and the police jurisdiction thereof.

SECTION TWO: The City Clerk of the City of Booneville is hereby authorized, directed and empowered to insert at the appropriate place therein, a certificate to the effect that said amended Personnel Policy is the official publication governing employees and providing rules and regulations governing employment with the City and that said amending ordinance and resolutions passed and adopted by the Board of Mayor and Aldermen of the City of Booneville has an effective date of April 6, 1982, and that said amended ordinance appears of record in the Official Minutes of the City of Booneville, Mississippi, as amended and constitutes the Official Amended City Personnel Policy.

SECTION THREE: That the public necessity and safety demanding same, this ordinance shall be in force and effect from and after the date of its passage.

The foregoing ordinance having been read and considered by sections, each of said sections being adopted by the following vote:

Aldermen voting "Yea": Wade Lambert, Charles Steen, Norman Young, R.G. Houston and Bluford Allen.

Aldermen voting "Nay": None
Whereupon said ordinance was put to vote upon its final passage as a whole and the same was passed as read with the following vote, to-wit:

Aldermen voting "Yea": Wade Lambert, Charles Steen, Norman Young, R.G. Houston and Bluford Allen.

Aldermen voting "Nay": None
Thereupon, the Mayor declared said ordinance approved passed and adopted.

This 6th day of April, 1982.
CHARLES E. CRABB, MAYOR
ATTEST: JUNE HUTCHESON, CITY CLERK

(SEAL)

CERTIFICATE

I, June Hutchison, hereby certify that the foregoing is a true and correct copy of an amending ordinance for the City of Booneville, Mississippi, duly passed by the Board of Mayor and Aldermen on April 6, 1982, and appearing of record in Ordinance Book 3, Pages 124-136, of the Official Minutes of the City of Booneville, Mississippi.

Witness my signature on this the 6th day of April, 1982.
JUNE HUTCHESON, CITY CLERK (SEAL)

April 15, 1982
07-1TC

Legal Notice

TRUSTEE'S NOTICE OF SALE

WHEREAS, on August 31, 1979, James T. Lindley and wife, Delores Ann N. Lindley, executed their certain Deed of Trust for the benefit of The Peoples Bank and Trust Company as shown in Trust Deed Book 123, Page 73, Chancery Clerk's Office, Prentiss County, Mississippi; and

WHEREAS, on July 17, 1981, James T. Lindley and wife, Delores Ann N. Lindley, executed their certain Deed of Trust to Eugene B. Gifford, Jr., Trustee, for the benefit of The Peoples Bank and Trust Company as shown in Trust Deed Book 131, Page 229, Chancery Clerk's Office, Prentiss County, Mississippi; and

WHEREAS, default having been made in the terms and conditions of said Deed of Trust and the entire debt secured thereby having been declared due and payable in accordance with the terms of said Deed of Trust, the legal holder of said Deed of Trust, The Peoples Bank and Trust Company, Booneville, Mississippi, having requested the undersigned Trustee to execute this trust and sell said land for the purpose of raising the sums thereunder, together with attorney's fees, trustee's fees and expense of sale.

NOW, THEREFORE, I, Eugene B. Gifford, Jr., Trustee in the said Deed of Trust will on the 7th day of May, 1982, offer for sale at public outcry, and sell within legal hours (being between the hours of 11:00 a.m. and 4:00 p.m.) at the West door of the County Courthouse in the County of Prentiss, Booneville, Mississippi, to the highest and best bidder for cash, the following described property lying and being situated in Prentiss County, Mississippi, to-wit:

Part of the Northwest Quarter of Section 11, Township 5 South, Range 8 East, described as follows: Beginning at a point on the West boundary of the Booneville and Marietta Highway, 20 rods North of the South boundary of said Quarter Section and run West 550 feet; thence North 100 feet; thence East 150 feet to a point on the West boundary of said Highway; thence South 100 feet to the point of beginning. Containing 1 1/4 acres.

Sunflower FOOD STORES

HIGHWAY 45 NORTH - BOONEVILLE, MISS.
PRICES GOOD THURSDAY, APRIL 15 THRU WEDNESDAY,
APRIL 21, 1982. QUANTITY RIGHTS RESERVED.
NONE SOLD TO DEALERS

The Greatest 14kt Gold Offer Ever!

Choose From 6 Beautiful 14 Kt **GOLD NECK CHAINS** (Mfg. Suggested Retail Price \$49.95) **\$19.99** Plus Your Get A **FREE PENDANT** With The Purchase Of Any Chain!

SUNFLOWER BOONEVILLE'S FINEST SUPERMARKET

BE SURE TO HAVE YOUR CARD PUNCHED

\$300 FREE CASH

James Southern's Name Drawn Card Not Punched

Register just once...Get your card punched each week and YOU CAN WIN! \$50.00 added each week until we have a winner. Drawing held every Saturday Night.

TENN. PRIDE Country Sausage 2-lb. pkg. **\$3.38** 1-lb. **\$1.69**

ROUND UP THESE VALUES FROM OSCAR MAYER

OSCAR MAYER Little Breakfast Links 12 oz. **\$1.99**

OSCAR MAYER Cooked or Chopped Ham . . . 6 & 8 oz. pkg. **\$1.59**

OSCAR MAYER Sliced Variety Paks 12 oz. **\$1.89**

OSCAR MAYER Lunchmeat 8 oz. **\$1.09**

Armour **LUNCHMEAT** Bologna, Salami, Spiced Luncheon 12 oz. pkg. **99¢**

U.S.D.A. INSPECTED **Whole Fryers** **49¢** POUND

BRYAN HOT Dinner Franks lb. **\$1.59**

SOUTHERN BELLE Hot Dogs . 12 oz. pkg. **99¢**

ARMOUR Sliced Smoked Ham 12 oz. pkg. **\$2.39**

FRESH BOSTON BUTT Pork Roast Semi Boneless lb. **\$1.29**

BRYAN Smoky Hollow Smoked Sausage Reg. or Beef . . . lb. **\$1.89**

FAMILY PAK Drumsticks lb. **79¢**

FAMILY PAK Thighs lb. **59¢**

BONELESS Chuck Roast lb. **\$1.59**

ARMOUR SLICED Bacon . . 12 oz. pkg. **\$1.29**



ROUND STEAK **\$1.79** lb. Savory Aged Bone In

SAVORY AGED Boneless Stew Meat . . lb. **\$1.89**

FRESH GROUND Chuck 3 lbs. or more lb. **\$1.69**

BANNER CUBED Beef Patties 3-lb. box **\$3.79**

FRESH SLICED Beef Liver Peeled & Deveined . . . lb. **89¢**

ROUND OR RUMP "Savory Aged" Boneless Roast lb. **\$2.49**

BONELESS BEEF Family Pak Cube Steaks . lb. **\$2.69**

SAVORY AGED Boneless Chuck Steak . lb. **\$1.99**

SHOULDER "Savory Aged" Swiss Steak . lb. **\$1.79**

Flavorite **SUGAR** 5-lb. bag **\$1.19**

Limit 1

Richtex **SHORTENING** 42-oz. can **99¢**

Limit 1

Pride-Of-Illinois **GOLDEN CORN** 17 oz. can **2/89¢**

Whole Kernel or Cream Style

Sunshine **KRISPY CRACKERS** 16 oz. box **59¢**

Flavorite Light **CHUNK TUNA** 6 1/2 oz. cans **79¢**

FRENCH'S WORCESTERSHIRE SAUCE 10 oz. **79¢**

LAY'S POTATO CHIPS REG. \$1.29 NOW **\$1.09**

KRAFT CHEESE SLICES 16 oz. **\$1.99**

KLEENEX BOUTIQUE TISSUE 4 ROLLS **99¢**

DUNCAN HINES CAKE MIXES BOX **88¢**

COKE or PEPSI ALL VARIETIES 2-LITER BOTTLE **\$1.19**

SUNDAY SPECIALS
GOOD ONLY APRIL 18th, 1982 ONLY

Charcoal 20-lb. bag **\$2.89**

Crisco 3-lb. can **\$1.99** Limit 1

THE FRESH COMMITMENT

US No. 1 Red **Potatoes** **\$1.09** 8-POUND BAG

Double Your Money Back... GUARANTEE!

Imported Red Grapes . . . lb. **\$1.39**

US. NO. 1 Yellow Onions . lb. **29¢**

Swt. Yel. Meat Cantaloupes ea. **99¢**

Sno-White Mushrooms . . pint. **89¢**

Fresh Greens bunch **69¢**

Sweet Yellow **CORN** 5 ears **99¢**

Generic **Toilet Tissue** 4 ROLLS **69¢**

Generic **COLAS** 2-LITER BOTTLE **85¢**

STOKELY PEAR HALVES 16 oz. **69¢**

STOKELY FRUIT COCKTAIL 16 oz. **59¢**

STOKELY GREEN BEANS or CREAM CORN 2 CANS **89¢**

SUNFLOWER HAS THE BEST SELECTION OF MONEY SAVING GENERIC ITEMS IN BOONEVILLE. SEE HOW MUCH YOU CAN SAVE?

TRELLIS SWEET PEAS 3 CANS **\$1.00**

LIPTON TEA BAGS 24 CT. **\$1.69**

GENERIC RAVIOLI 16-oz. CAN **69¢**

Kraft **PARKAY** 1-lb. qtrs. **2/\$1**

Flavorite Whipped **TOPPING** 8 oz. tub **49¢**

SEALTEST **SOUR CREAM** 2 8 oz. **\$1.00**

KRAFT **VELVEETA CHEESE** 16 oz. **\$1.89**

SMUCKER'S **GRAPE JELLY** 2 LBS. **\$1.19**

Generic **Peanut Butter** 18 oz. **99¢**

Kraft **Salad Dressing** 16 oz. **\$1.19**

ITALIAN 1000 ISLAND FRENCH CATALINA CREAMY CUKE

Bama **Mayonnaise** QUART **99¢**

Sunflower **Meal** 5-LB. BAG **\$1.09**

Purex Detergent 42 oz. **\$1.19**