



Myres McDougal Paid Tribute By Justice White

A justice of the U. S. Supreme Court came to Mississippi Tuesday night to pay tribute to his former teacher, Myres McDougal, who left the rural hills of Prentiss County to become a law professor at Ole Miss and Yale University and later to gain fame as one of the nation's best known experts on international law.

Supreme Court Justice Byron White, featured speaker at the Ole Miss banquet attended by three hundred persons, including Governor Paul Johnson and most members of the Mississippi Supreme Court, quoted comments describing Prof. McDougal as providing "some of the finest thinking of our generation in international law."

"His books have made a major contribution to the nation's legal community," said Justice White of his former Yale teacher.

The occasion for honoring Prof. McDougal at the dinner on the Ole Miss campus was the university's first granting of the L. Q. C. Lamar Award, with Prof. McDougal as its recipient.

Prof. McDougal, brother of Dr. Luther McDougal and Smith McDougal of Tupelo, recalled how there were only four hundred at the University of Mississippi when he entered school there in 1922.

He told his audience of Ole Miss students and alumni that in touring the state in recent days he has found a vast forward-looking change in the thinking of the people of Mississippi.

The Yale professor, who is president of the American Association Law Schools, pointed out that "the people of all the world are now demanding access to health and education."

"There is today a complete interdependence among the powers of the world and the economic processes," he said. "Because of this many of our habit patterns must change."

"The problems of our state are not the problems of Mississippi but the problems of our nation and of the world," he emphasized.

Justice White, a former All-American football player and assistant U. S. Attorney General, who was appointed to the U. S. Supreme Court by President Kennedy, praised the famed Mississippian L. Q. C. Lamar, as a man great in both houses of Congress, in the President's cabinet and as a member of the U. S. Supreme Court.

The Supreme Court justice pointed out that while many have been quick to criticize the courts, "very few of these newer students of the law pay adequate heed to legislative or executive decisions, both of which, in my view, at least, have far greater impact, cover more ground and produce more change in the law than any court."

Praising the work of Prof. McDougal as a constructive force in the legal community, he added: "Those who have been so obsessed with the courts and judging have for the most part been negative or critical."

They may be able to tell you in their own language how judges have decided cases, how judges perform that task, and what the law

Registration For Evening Classes At Northeast Monday

Registration for evening classes in the vocational business education program at the Northeast Mississippi Junior College will be held Monday, January 17.

The organizational meeting will be held at 6:30 p.m. in the Science Building auditorium.

Non-credit courses available in the vocational business education program include a course in Secretarial Upgrading, Refresher Short-hand, and Beginning Short-hand. Upon satisfactory completion of each course, a certificate will be awarded.

actually is and perhaps what it will be tomorrow. But there most of them stop.

Only very few have ventured any comprehensive statement of how legislative, executive and judicial decisions ought to be made or offered any overall view of what the law ought to be.

"But there are those few, and among this small number of unusually venturesome and creative souls your first Lamar Fellow, Myres McDougal, is most assuredly in the vanguard."

Prof. McDougal was presented the L.Q.C. Lamar Award by Ole Miss Law School Dean Joshua Morse III. Introducing honored guests at the meeting, including most of the justices of the Mississippi Supreme Court as well as Gov. Johnson, was William Winter, state treasurer and president of the Law Alumni Chapter of Ole Miss.

—Tupelo Journal

Prof. McDougal is the son of the late Dr. and Mrs. L. L. McDougal of Booneville. His father was a leading practitioner in Prentiss County for many years.

He is the nephew of Miss Pearl Smith and the late Mr. and Mrs. A. T. Smith.

Mayor M. W. Smith wired congratulations from his home town.

Booneville Series Opens Tonight

By TED RUBENSTEIN

After taking the Tombigbee championship, the Booneville Blue Devils are preparing for a rough week ahead with the Booneville Series and a game with undefeated Tupelo next in line.

With one of the strongest line-ups in its history, the Booneville Series opens tonight with basketball games between Wheeler and Kossuth at 6:00, New Site and Alcorn Central at 7:15, and Booneville and Jumpertown in the night-cap. The balance of these teams is evident, for New Site, county champs, have been beaten only by Wheeler, Jumpertown, and Tishomingo. Wheeler has been taken by New Site and Booneville. Jumpertown has beaten Booneville once and Alcorn Central has lost in this area only to Booneville.

Teams change partners for Friday night's action as New Site and Kossuth start action, followed by Jumpertown and Alcorn Central, with rivals Booneville and Wheeler playing at 8:30.

Scheduling difficulties forced the addition of two top teams in the final round as Bruce takes on Wheeler, the only team who has beaten them all year, in the first game Saturday. Belden, who has also beaten Wheeler, will take on Jumpertown in the 7:15 game, and host Booneville and Kossuth battle in the final game of the tournament.

Officials for the Series are Ken McKinney, Clyde Jones, and J. D. Holley. Admission for all three sessions will be \$1.00 for adults and 50 cents for students.

Next Tuesday, January 18th, the Devils host top seeded District I team—Tupelo—with B-team and varsity games. The Golden Wave is unbeaten and will probably be the sternest test the Devils will have to face all season.



SPEAKS ON DEVELOPMENT—L. P. (Bud) McCarty, right, of Tupelo spoke to the Booneville Rotary Club and a number of guests Tuesday on how the Community Development Foundation has been successful in the progress and development of Tupelo and Lee County. Stewart Vail was in charge of the program and introduced the speaker.

Sportsmen's Club To Meet Tuesday Night

The Prentiss County Sportsmen's Club will hold its regular meeting Tuesday, January 18 at the Club House.

All sportsmen are urged to come out and enjoy the fellowship and supper. The meeting will start at 7:00 p.m.

R. C. Carpenter, Secretary

Four From County Degree Candidates At Mississippi State

STATE COLLEGE, Miss.—Three hundred and eighty seven Miss. State University students completed requirements for degrees in January.

The list includes 75 students in the Graduate School, 8 of whom hope to receive the Ph.D. degree. Next largest in number of candidates is the College of Business and Industry with 92 students.

The College of Education has 73 candidates; the College of Arts and Sciences, 50; College of Engineering, 46; College of Agriculture, 44; and the School of Forestry, 7.

Degree candidates from Prentiss County are:

Travis R. Chase, James Terry Christian and Robert F. Oakley, all of Booneville; Troy Odell Griffin of Baldwin.

P*TA To Meet Monday Night

The Booneville Grammar School P*TA will have their regular meeting Monday night, January 17 at 7 p.m. in the auditorium. An interesting program is being planned. Everyone is urged to attend.

Brothers Reunited After 52 Years

Mr. Calvin Penna Walker was made happy through a reunion with his brother, Lee Walker of Gena, La., who was an overnight guest in the Walker home Monday.

The brothers had not been together in 52 years. Following the death of their father, Mr. Richard Walker, who was killed in a storm in Gena in 1912, the sons were separated.

Lee, stayed with his grandmother in Gena, and Calvin came to Booneville in 1914 to make his home with the W. D. Penna family.

Mr. Walker's many friends are happy to know of the joyous occasion when they met again after so many years.

Miss. State Alumni Assoc. To Meet Friday Night

Prentiss County Chapter of Mississippi State Alumni Association will meet Friday, January 14 at 7 p.m. Election of officers for 1966 and kickoff of membership drive will be held. Light refreshments will be served after the meeting.

Booneville Masons To Confer Degree

On Tuesday night, January 18th, Booneville Lodge No. 305, F. & A. M. will meet for the purpose of conferring the Entered Apprentice Degree. The meeting will start at 7 o'clock and members are urged to be present. Visitors from other lodges are welcome.

Milton Ward, W. M. Melvin Patt, Secretary

Community-Wide Effort For Progress Explained Tuesday

The role of the Community Development Foundation in the industrial and overall economic growth of the Tupelo area in particular and of Lee County was discussed before the Booneville Rotary Club and a large number of guests Tuesday at noon by L. P. (Bud) McCarty, Tupelo wholesaler who is a member of the Foundation's Board of Directors. Mr. McCarty is also serving this year as president of the 14-county Yocona Area Council of the Boy Scouts of America.

Rotary President Merrill Cartwright presided at the meeting, held in the Northeast Mississippi Junior College cafeteria, and Mayor Marion Smith introduced the guests. The speaker was introduced by Stewart Vail, who was in charge of the program for the day.

Mr. McCarty said that the Tupelo program "has been successful, which proves it to be right."

The speaker told the group that immediately following World War II there was a great upsurge of learning and productivity from the young man returning from service, and explained why at that time the Community Development Foundation replaced and absorbed the Chamber of Commerce.

He said their philosophy was to build a program around community effort rather than individual effort.

Booneville District Nurses Meet

The Booneville District Nurses Association held their regular meeting in the County Health Department building Tuesday evening with Miss Linda Juanez Bugg, presiding.

The program on The Nurses Code of Ethics was presented by Misses Elizabeth Ledbetter and Mary Jo Trantham.

At the social period cookies and coffee were served.

Three Youths Probation Revoked; Ordered To Serve Sentences

Prentiss County Sheriff Gerald Green and Booneville Police Chief W. W. Stacy reported that three youths involved recently in burglary and larceny in the area had their probation revoked and were ordered to begin serving terms in the penitentiary at Parchman. Sheriff Green and Chief Stacy took them before Circuit Judge N. S. Sweat, Jr. in Corinth Tuesday morning.

The sheriff said that Wade Lambert, 20, and Henry Winslow, 19, admitted breaking into the Booneville Country Club the night of December 2 and taking approximately \$70.00 in money and degrading a considerable amount of property. They were sentenced to serve one year at Parchman, and

each had four years sentence suspended which the judge said would be invoked immediately at any sign of future violation.

The officers said that Eugene Lawson, 21, was also charged with grand larceny for taking two new tires from the Royal Service Station. He was also sentenced to serve one year, with four years suspended indefinitely.

Sheriff Green said one minor was also involved in one of the incidents and was on probation in Youth Court.

Sheriff Green and Chief Stacy said that they are continuing their investigations on other breakins and are getting more information all along. They are being assisted by special investigators Sam Allen and D. B. Crockett.

perform the functions of several different agencies with more efficiency and less expense.

Mr. McCarty compared it with the Community Fund Drive which was started in Booneville last year and met with great success with less effort on the part of all concerned.

As an example of the Foundation's attitude toward the way to develop, he pointed out that in farming they stress overall farm management rather than just an increase in production, which will come with the proper management, and then an industrial productivity on par with the high farm production.

The Foundation now has 151 active committee members serving on the various committees within the united organization, Mr. McCarty told the group, and explained briefly the functions of some of the

committees, such as Industrial, Merchants, RCDC, Tourist and Recreation, and Highway Program.

He said the annual meeting is a very important part of the program, to allow all interested persons to hear a review of progress and plans for the future.

The speaker showed charts depicting the growth in employment, income growth, wholesale and retail sales, bank deposits, etc.

"Economists predict a \$40 billion increase in the gross national product this year, up to approximately \$710 billion," Mr. McCarty said, "Now is the time to get in there and try to take advantage of our opportunities."

During recent weeks several Booneville businessmen have been discussing the advisability of organizing a similar agency here to better coordinate the efforts of the various groups in the community.

BHS Cagers Have Loop Cage Crown For The Fourth Time In Five Years

For the fourth time in five years, the Booneville Blue Devils have captured the Tombigbee Conference basketball championship, a Jerry Green and Benny Stennett won places on the tournament's all-star team. Green's tournament average was 10.3 points per game, mostly from the outside, and Stennett averaged 11.3 points per game, his coming from aggressive board action.

In the three-round action, the Devils posted wins over Calhoun City, Nettleton, and Baldwin. Posting easy wins in the first two rounds, the Devils showed the effects of playing three consecutive games, as they looked sluggish in the Baldwin championship encounter, winning 35-33. Hitting barely 35% from the field the Devils had to rely on a tough defense which let

the Bearcats inside the free throw lane only four times throughout the evening for shot attempts. Baldwin relied mainly on the uncanny shooting of another all-star pick, Danny Bishop, as he picked up half of his team's points with 16. Ben Burcham led the Devils with 10.

Next action for the home town crew includes the Booneville Series this week, and games with the undefeated Tupelo Golden Wave here on Tuesday, January 18th.

NEMJC To Begin Second Semester

The Northeast Mississippi Junior College will begin its second semester on Tuesday, January 25, at 8:30 with sophomore registration in the Classes Building.

Freshmen (M-Z) will register on Tuesday, January 25, at 1:00 p.m. Freshmen (A-L) will register on Wednesday, January 26, at 8:30 a.m.

Classes will begin Thursday, January 27.

The Northeast Mississippi Junior College is fully accredited by the Southern Association of Colleges and Schools and the Mississippi State Accrediting Committee, and is a member of the State Association of Colleges and the American Association of Junior Colleges. It offers the Associate of Arts Degree and Associate of Science Degree. Credits earned are transferable to other member colleges.

Courses are offered in the following fields of study: Agriculture, Art, Business Education, Education and Psychology, English, Health and Physical Education, Home Economics, Industrial Arts, Liberal Arts, Mathematics, Modern Languages, Music, Natural Science, Nursing, Pre-Engineering, and Social Science.



MARCH OF DIMES—Mayor Marion W. Smith is General Chairman of the Prentiss County March of Dimes. Miss Gloria Jean Rutherford, the new Prentiss County Chairman, looks on while Mayor Smith signs the proclamation declaring January 1966, the March of Dimes Month.

Guest Editorial—

Working Together Is Success

By W. H. ANDERSON, M.D.

With 1965 ending three years of prosperity for this section; 1966 walks in with a generous smile. World affairs are not looking so good, but we must live in hope. If this section continues to build on the firm foundation on which it now stands we shall not fail. The eyes of Mississippi are turning to this corner of the State and we still claim Booneville as the capital of Northeast Mississippi. We have values that have not yet been recognized, we are more than happy to share our fortunes with this corner of Northeast Mississippi and with the entire state. "Coming together is a beginning, keeping together is progress, working together is success." "You don't get the breaks unless you play with the team instead of against it."

Booneville and Prentiss County have so much to point to with pride. Our natural resources and climate are unexcelled. We have the first Hill-Burton Hospital in the nation in which we now have two and a half million dollars. We have the outstanding Junior College of the nation and the Junior College is now the cornerstone of public education. It is the girder of higher education, the cold frame from the high school to the senior college, the Nurses Training School operated by the College and our Hospital. We have a balanced system of agriculture and industry, a thriving dairy industry, and a fine industrial payroll, schools and churches and a spirit of hospitality are living as-

sets that we have been able to get along with the other, working together for the good of one and all has set us apart. This brotherly and cooperative spirit has brought happiness and has brought prosperity as well, but for these we could not have had our fine hospital, our outstanding Junior College, our training school for nurses and our wonderful farm improvement and our fine industrial payroll. By being broad-minded, and just and fair, we have been able to live at peace and we have gained in economic security.

Our Negroes have been well balanced and cooperative. The High School was invited to take part in the recent Christmas parade and showed talent and cooperative spirit when their float won second place. The streets have been improved in Sunflower. The town has expanded its natural gas lines, which will add much to the growth of the city.

Our growth and improvements have come that we may have life and have it more abundantly. The sun of a new day is rising before us. We must grasp our opportunities and go forward.

With the spirit that has been manifested in our county during the last two or three years we may come alive and live and prosper as never before.

We must not take off on any byways.

(Dr. Anderson was editor of the INDEPENDENT for 25 years and the BANNER for a while.)

Northeast JC To Begin Vocational Evening Classes

The Northeast Mississippi Junior College in cooperation with the State Department, will begin evening classes in vocational education the week of January 17.

The purpose of this program is to give the individual an opportunity to broaden his knowledge in some particular skill or to learn new skills. Classes being taught in the evening will give the individual that is employed during the normal work hours an opportunity to attend.

Courses in welding, electricity, sheet metal and drafting will be offered. Course outlines may be obtained on any particular course at the Vocational-Technical office at Northeast.

A schedule for orientation follows: Drafting—7:00 p.m.—Jan. 17. Electricity—7:00 p.m.—Jan. 18. Sheet Metal—7:00 p.m.—Jan. 19. Welding—7:00 p.m.—Jan. 20. Classes will meet on Monday, January 24.

This program, for which a small materials fee will be charged, offers an excellent opportunity for the individuals in the five county area who desire training in these skills.



"NORTHEAST" REUNION AT MSCW—E. A. Knight, registrar and coordinator of continuing education at Mississippi State College for Women, enjoys periodic reunions at MSCW with former students of Northeast Junior College at Booneville where he formerly served as president until coming to MSCW last year. Among the "Northeast" alumnae, former students under Mr. Knight are these six home economic students at MSCW: Barbara Olive of Booneville, front row left, and Bonnie Sue Thompson of New Albany; back row, from left, Margaret Quinn of Walnut, Barbara Enis Helley of Booneville, Gail Mincy of Corinth and Norma Enis of Booneville.

WHEELER BAPTIST CHURCH
 Billy M. Langley - Pastor
 Sunday School, 10:00 a.m.; Morning Worship
 Sunday School - 10:00 a.m.
 Morning Worship - 11:00 a.m.
 T. U. - 6:30 p.m.; Evening Worship - 7:15 p.m.
 Prayer Meeting Wednesday - 7:30 p.m. - Welcome

PISGAH METHODIST CHURCH
 H. W. Lay, Pastor
 Sunday School - 10:00 a.m.
 Worship Service - First Sunday, 9:45 a.m.; Second
 Sunday, 7:30 p.m.; Fourth Sunday, 11:00 a.m.
 Youth Fellowship - 6:30 p.m.

FIRST METHODIST CHURCH
 Rev. W. R. Richerson, Pastor - West Church St.
 Sunday Church School - 9:45 a.m.
 Morning Worship - 11:00 a.m.
 Sunday Night Youth Fellowship - 6:30 p.m.
 Evening Worship - 7:30 p.m.
 Mid-Week Prayer Service - Wednesday 7:30 p.m.

CHURCH OF CHRIST
 Highway 45 North
 J. A. Thornton, Minister
 Sunday Bible School - 9:45 a.m.
 Morning Worship - 10:35 a.m.
 Sunday Night Young People Meeting - 6:00 p.m.
 Evening Worship - 7:00 p.m.
 Mid-Week Bible Study - Wednesday 7:00 p.m.

PRESBYTERIAN CHURCH
 Market Street
 Lawrence Wood, Minister
 Sunday Worship Service - 9:00 a.m.
 Sunday School - 10:00 a.m.
 Sunday Young People's Meeting - 6:00 p.m.
 Prayer Meeting - Thursday 7:00 p.m.

GRACE METHODIST CHURCH
 Highway 30 East
 Huey and Ruth Wood, Ministers
 Sunday School - 9:45 a.m.
 Morning Worship - 11:00 a.m.
 Sunday Night M.Y.F. - 6:00 p.m.
 Evening Worship - 7:00 p.m.
 Mid-Week Prayer Meeting - Wednesday 7:00 p.m.

FORKED OAK BAPTIST CHURCH
 Rev. Milton Wright, Pastor
 10:00 a.m. - Sunday School
 11:00 a.m. - Worship Service
 7:00 p.m. - Training Union
 8:00 p.m. - Worship Service
 7:00 p.m. Wednesday - Mid-Week prayer service

FIRST BAPTIST CHURCH
 First & Church St. - Rev. Billy E. Roby, Pastor
 Sunday School - 9:45 a.m.
 Morning Worship - 10:55 a.m.
 Training Union - 6:30 p.m.
 Evening Worship - 7:30 p.m.
 Prayer Meeting - Wednesday 7 p.m.

CAROLINA METHODIST CHURCH
 Rev. Huey Wood, Pastor - Hwy. 4 West
 Sunday School every Sunday at 10:00 a.m., ex-
 cept on 4th Sunday, at 11:00 a.m.
 Morning Worship - 1st, 2nd, 3rd Sundays, 11 a.m.
 Morning Worship 4th Sunday at 10:00 a.m.
 Evening Worship 2nd Sunday 7:30 p.m.
 M. Y. F. - 6:30 p.m.

EAST BOONEVILLE BAPTIST CHURCH
 Rev. Earle Green, Pastor - East Church Street
 S. S. - 9:45 a.m.; Morning Worship - 11:00 a.m.
 T. U. - 6:00 p.m.; Evening Worship - 7:00 p.m.
 Prayer Meeting - Wednesday 7:00 p.m.

CANDLER'S CHAPEL BAPTIST CHURCH
 Rev. Hermon C. Dykes, Pastor
 Sunday School - 10:00 a.m.
 Preaching Service - 11:00 a.m.
 Training Union - 6:30 p.m.
 Evening Worship - 7:30 p.m.
 Prayer Meeting - Wednesday at 6:30 p.m.

TUSCUMBIA BAPTIST CHURCH
 Bro. Billy Hester, Pastor
 Sun. School - 10:00 a.m.; Morning Worship - 11 a.m.
 Evening Worship - 7 p.m.; Training Union - 6 p.m.
 Prayer Meeting - Wednesday, 5 p.m.

PINEY GROVE BAPTIST CHURCH
 Bro. Dewey Wallis, Pastor
 Sunday School - 10 a.m.
 Preaching Services each 2nd and 4th Sunday at
 11 a.m. and 7:30 p.m.

FAIRVIEW BAPTIST CHURCH
 Lake St. - Rev. T. L. Parker, Pastor
 Sunday School - 10:00 a.m.
 Morning Worship - 11:00 a.m.
 Evening Worship - 7:00 p.m.
 Prayer Meeting - Wednesday 7:00 p.m.

ZION REST CHURCH OF CHRIST
 Three Miles North of Marietta
 Sherrill Bennett, Minister
 Sunday Bible School - 9:30 a.m.
 Morning Worship - 10:30 a.m.
 Bible Study - Monday, 7 p.m.

HOUSE OF PRAYER
 Dovie Runions, Pastor
 Preaching Services Saturday night - 7:30 p.m.
 Sunday School - 10 a.m.
 Preaching Services Sunday - 11 a.m. and 7:30 p.m.

HILL'S CHAPEL CHURCH OF CHRIST
 Jimmy Olive, Minister
 Sunday Bible School - 9:45
 Morning Worship - 11:00 a.m.
 Evening Worship - 7 p.m.
 Mid-Week Bible Study - Wednesday 7:00 p.m.

MARTIN HILL FREEWILL BAPTIST CHURCH
 Hwy. 30 East - Rev. Curtis Briley, Pastor
 Sunday School - 10 a.m.
 Preaching - 11 a.m.
 Young Peoples Training - 6:30
 Evening Worship - 7:00
 Mid-Week Services - Wednesday, 7:00.

EAST PRENTISS BAPTIST CHURCH
 Three miles east of New Site
 Bro. Wallace Pannell, pastor
 Sunday School - 9 a.m.
 Preaching Services each 2nd and 4th Sunday -
 2:00 p.m.

MARIETTA CHURCH OF CHRIST
 G. T. Pharr, Minister
 Sunday Bible School - 9:45 a.m.
 Morning Worship - 10:45 a.m.
 Evening Worship - 6:00 p.m.
 Bible Study - Wednesday at 7:30 p.m.

**CAIN'S CHAPEL UNITED PENTECOSTAL
 CHURCH**
 H. L. Hatter, Pastor
 Sunday School - 10:00 a.m.
 Morning Worship - 11:00 a.m.
 Evening Worship - 7:00 p.m.
 Youth Service - Tuesday 7:00 p.m.
 Bible Study - Thursday, 7:00 p.m.

STUTTS CHAPEL CHURCH OF CHRIST
 Sherrill Bennett - 2nd & 4th Sun.
 Jim Archer - 1st, 3rd & 5th Sun.
 Sunday Bible Study - 9:30 a.m.
 Sunday Morning Worship - 10:30 a.m.
 Sunday Evening Song Practice - 6:30
 Evening Worship - 7:00

BLACKLAND METHODIST CHURCH
 Rev. Huey Wood, Pastor
 Sunday School - 1st, Sunday 11 a.m.
 2nd, 3rd, and 4th, Sunday 10 a.m.
 Morning Worship - 1st, Sunday 11 a.m.
 2nd, Sunday 11 a.m.
 Evening Worship - 4th, Sunday 7:30 p.m.

JACINTO CHURCH OF CHRIST
 Bro. J. T. Smith, Minister.
 Sunday Bible School - 9:45 a.m.
 Morning Worship - 10:45 a.m.
 Evening Worship - 6:30 p.m.
 Mid-Week Bible Study - Wednesday - 7:00 p.m.

What's A G A R N I S H



**THE CHURCH FOR ALL
 ALL FOR THE CHURCH**

The Church is the greatest factor on earth for the building of character and good citizenship. It is a storehouse of spiritual values. Without a strong Church, neither democracy nor civilization can survive. There are four sound reasons why every person should attend services regularly and support the Church. They are: (1) For his own sake. (2) For his children's sake. (3) For the sake of his community and nation. (4) For the sake of the Church itself, which needs his moral and material support. Plan to go to church regularly and read your Bible daily.

SUSAN'S mother is a wonderful cook. She'll teach her little girl all about garnishes and dumplings and conserves... and about dozens of other skills that will help Susan to be a talented homemaker herself, one day.

We pass our own store of knowledge on to our children because we want to make things easier for them in the future. They will need all the preparation we can give them in order to cope with a life that grows ever more complex.

ABOVE all, we owe our children the opportunity to learn about their best friend, God. Awareness of His loving presence will give them confidence and courage whatever they do, wherever they go. Through regular church attendance, they can absorb the inspiring principles of Christianity... the most valuable recipes for modern living that exist.

Copyright 1966 Keister Advertising Service, Inc., Strasburg, Va.

Sunday Deuteronomy 4:1-8	Monday Deuteronomy 31:9-13	Tuesday Psalms 16:5-11	Wednesday Jeremiah 10:1-10	Thursday Matthew 11:20-30	Friday Acts 10:30-43	Saturday Ephesians 4:17-24
--------------------------------	----------------------------------	------------------------------	----------------------------------	---------------------------------	----------------------------	----------------------------------

CALVARY BAPTIST CHURCH
 Corner of Main and Broad St.
 Rev. T. F. Grubbs, Pastor
 Sunday School - 9:55 a.m.
 Morning Worship - 11:00 a.m.
 Training Union - 6:00 p.m.
 Evening Worship - 7:00 p.m.
 Prayer Meeting - Wednesday 7:00 p.m.

OAK HILL BAPTIST CHURCH
 Rev. John Dugard, Pastor
 Sunday School - 10 a.m.; Morning Worship - 11 a.m.
 Training Union - 7 p.m.; Evening Worship - 8 p.m.

LAMB'S CHAPEL CHURCH
 Bro. W. E. Sharp, Pastor
 Sunday School - 10 a.m.; Preaching Services: 1st Sun-
 day - 11 a.m.; 3rd Saturday night - 7 p.m.

EAST PRENTISS BAPTIST CHURCH
 Rev. Wallace Pannell, Pastor
 Sunday School - 9:30 a.m.
 Preaching 2nd and 4th Sunday - 2:00 p.m.
 Preaching 1st and 3rd Saturday - 7:00 p.m.

SHADY GROVE METHODIST CHURCH
 Ruth Wood, Pastor
 Preaching on 4th Sunday - 10:00 a.m.

THIS PAGE IS SPONSORED AND PAID FOR BY THE FOLLOWING:

Billingsley Chevrolet Co. **MasterSon, Inc.** **Prentiss County Home Bank**

Peoples Bank and Trust Co. **Coca-Cola Bottling Works** **Pepsi-Cola**
 Corinth

Chittom Milling Co. **North Miss. Savings and Loan** **S. and J. Ready Mix**

Pierce Repair Shop **Houston Shell Serv. Station** **The Fabric Shop**

Town Motel **Liberty Cash Grocery** **Drug Center**

R. L. Long Ins. Agency **Booneville Steam Laundry** **Blue Bell Employees**
 and Cleaners

Booneville Floral Co. **Dobbins Spur Station** **Aletha Lodge Nursing Home**

G. and W. Cleaners **Young's Service Station**

M. and H. Food Market **Goddard Elec. Motor Repair** **Farmers & Merchants Bank**
 Baldwyn, Miss.

MARIETTA METHODIST CHURCH
 Rev. John Milkaps, Pastor
 Sunday School 2nd and 4th Sunday - 9:30 a.m.
 Sunday School 1st and 3rd Sunday - 10:30 a.m.
 Preaching Services 1st & 3rd Sunday - 9:30 a.m.

CROSS ROADS METHODIST CHURCH
 Rev. Huey Wood, Pastor
 1st. Sunday - Morning Worship 10:00 a.m.
 2nd. Sunday - Evening Worship 7:30 p.m.
 3rd. Sunday - Morning Worship - 11:00 a.m.
 Sunday Church School, 1st. Sunday - 11:00 a.m.
 Other Sundays - 10:00 a.m.

NEW SITE BAPTIST CHURCH
 New Site - Bro. Joe Hughes, pastor
 Sunday School - 10 a.m.
 Worship Service - 1st Sunday at 2 p.m.

LITTLE BROWN FREEWILL BAPTIST CHURCH
 Rev. Buford Pierce, pastor
 Sunday School - 10:00 a.m.
 Morning Worship - 11 a.m.
 Evening Worship - 7:00 p.m.

GASTON BAPTIST CHURCH
 Rev. W. Lamar Boothe, Pastor
 Sunday School - 9:30 a.m.
 Morning Worship - 10:30 p.m.
 Training Union - 7:00 p.m.
 Evening Worship - 8:00 p.m.
 Prayer Meeting - Wednesday 7:36 p.m.

FIRST FREEWILL BAPTIST CHURCH
 North Lake St. - Rev. J. L. Gore, Pastor
 Sunday School - 10:00 a.m.
 Morning Worship - 11:00 a.m.
 C. T. S. - 8:15 p.m.
 Evening Worship - 7:00 p.m.
 Prayer Meeting - Wednesday 7:00 p.m.

CHURCH OF GOD
 303 Hatchie St. - Rev. L. E. Pate, Pastor
 Sunday School - 10:00 a.m.
 Morning Worship - 11:00 a.m.
 Evening Worship - 7:00 p.m.
 Prayer Meeting - Wednesday 7:06 p.m.

LIBERTY METHODIST CHURCH
 Hwy. 30 East - Ruth Wood, Pastor
 Morning Worship - 9:45 a.m.
 Sunday School - 11:00 a.m.
 M. Y. F. - 6:30 p.m.

OSBORNE CREEK BAPTIST CHURCH
 Old Hwy. 45 W. - Rev. Clarence Jones, Pastor
 Sunday School - 10:00 a.m.
 Morning Worship - 11:00 a.m.
 Prayer Meeting - Thursday 6:30 p.m.

CRESTWOOD BAPTIST MISSION
 Hwy. 4 East - Rev. Clarence Jones, Pastor
 Sunday School - 10:30 a.m.
 Morning Worship - 9:30 a.m.
 Training Union - 6:30 p.m.
 Evening Worship - 7:30 p.m.
 Prayer Meeting - Wednesday 7:00 p.m.

THRASHER BAPTIST CHURCH
 Rev. Dewey Wallis, Pastor
 Sunday School - 9:00 a.m.
 Morning Worship - 9:45 a.m. 2nd, 4th and 5th Sun-
 days.
 Evening Worship - 6:00 p.m. - 2nd, 4th and 5th
 Sundays.
 Training Union - Sunday 7:00 p.m.

SMITH CHAPEL FREEWILL BAPTIST CHURCH
 Rev. Arthur Dill, pastor
 Sunday School - 10:00 a.m.
 Preaching each 1st and 3rd Sunday at 11 a.m.
 Singing on the 2nd Sunday night of each month.

MT. PLEASANT COMMUNITY CHURCH
 8 Miles E. of B'ville - Eld. R. J. Townsend, Pastor
 Church Services at 2:00 p.m. on the 1st Sunday.

FIRST UNITED PENTECOSTAL CHURCH
 Robert E. Foubush, Pastor
 Sunday School - 9:45 a.m.
 Morning Worship - 11 a.m.
 Youth Services Sunday - 6:30 p.m.
 Evangelistic Service Sunday - 7:30 p.m.
 Prayer Service - Tuesday 7 p.m.
 Bible Study - Wednesday 7:30 p.m.

WHEELER PRIMITIVE BAPTIST CHURCH
 Elder James R. White, Pastor
 Bible Study - 10 a.m.
 Morning Worship - 2nd and 4th Sundays 11 a.m.
 Evening Worship - 2nd and 4th Sundays 6:30 p.m.
 Fellowship Hour - Wed, before 2nd and 4th Sun-
 days, 7 p.m.

SNOWDOWN CHURCH OF CHRIST
 Jim Archer, Minister, 2nd & 4th Sun.
 R. C. McCoy, Minister, 1st & 3rd Sun.
 Sunday Bible School - 10:00
 Morning Worship - 11:00
 Evening Worship - 6:30

MT. OLIVE CHURCH OF GOD
 Three Miles North of Altitude
 Bro. A. L. Marshall, Pastor
 Sat. n'ght, Young People's meeting - 7:30 p.m.
 Sunday School - 9:45 a.m.
 Morning Worship - 11 a.m.
 Evening Worship - 6:30 p.m.
 Prayer Meeting - Wednesday at 7:30 p.m.

JUMPERTOWN CHURCH OF CHRIST
 Sunday Bible School - 10:00 a.m.
 Morning Worship - 11:00 a.m.
 Bro. Jerry Smith, 1st Sun.; Bro. Oscar Clark, 3rd Sun.

NEW BETHEL CHURCH OF CHRIST
 Bro. J. T. Smith, 1st Sun.
 Bro. Gardner, 2nd & 3rd Sun.
 Sunday Bible School - 9:30
 Morning Worship - 10:30

LITTLE CREEK BAPTIST CHURCH
 3 1/2 Miles North of Marietta
 Bro. R. C. Spencer, Pastor
 Sunday School - 10 a.m.
 Preaching Services, 1st and 3rd Sunday - 11 a.m.
 Evening Worship, 1st and 3rd Sunday - 7 p.m.
 Training Union - 6:00 p.m.

MT. PISGAH FREEWILL BAPTIST CHURCH
 Rev. W. M. Briley, Pastor
 Sunday School - 10 a.m.
 Worship Service - 11 a.m. and 6:30 p.m.
 Singing each 4th Sunday - 1 p.m.

INFANT OF PRAGUE CATHOLIC CHURCH
 Pastor - Rev. Patrick Tierney
 Masses: Thursday and Friday afternoons, 5:00 p.m.
 Sunday, 9:00 a.m. Confession before each mass.

JUMPERTOWN METHODIST CHURCH
 Rev. Huey Wood, Pastor
 Sunday School - 10 a.m., except 3rd Sunday 11 a.m.
 Morning Worship - 1st Sunday 10 a.m.; 4th Sun-
 day 11 a.m.
 Evening Worship - 1st Sunday 7:30 p.m.
 M. Y. F. at 6:30 p.m.
 W.S.C.S. 3rd Sunday 7:30 p.m.
 Men's Club 4th Sunday 7:30 p.m.

THRASHER METHODIST CHURCH
 H. W. Lay, Pastor
 Sunday School - 10:00 a.m.
 Worship Service - First Sunday, 7:30 p.m.; Third
 Sunday, 11 a.m.; Fourth Sunday 9:45 a.m.
 Youth Fellowship - 6:30 p.m.

BLYTHE CHAPEL METHODIST CHURCH
 Rev. Ervin Dees, Pastor
 Sunday School every Sunday at 10 a.m.
 Morning Worship every 1st Sunday at 11 a.m.
 Evening Worship every 3rd Sunday at 7 p.m.

HOME ECONOMIST'S NOTES

By CLAIRE T. ROSS, Extension Home Economist

The January-February issue of the Garden, Fruit, and Flower Guide is available from your Home Economist's office, and copies of the Year-Round Home Garden Bulletin are available for the asking. Don't wait until planting time to prepare your garden and plan what you are going to plant. As you make up your seed list of recommended varieties, try some new mended varieties along with the old favorites.

If you don't have space for a garden, plan to try some back-yard or flowerbed gardening. See if you can't find some space for a few feet of beans, onions or a half-dozen tomato plants or some other favorite vegetable.

Goodwin's Trailer Park

PHONE 728-5543
Blacktopped Trailer Area
COIN-OP DRY CLEANER
AUTOMATIC LAUNDRY
326 Adams St. Booneville, Miss.

PAUL REVERE Offers...

Individual and Family Group Hospitalization Plans
Sickness and Accident Income Protection
Non-cancellable, guaranteed renewable to age 65 at a guaranteed premium with option to continue thereafter.
ALL TYPES LIFE INSURANCE FOR FULL INFORMATION CONTACT
Q. R. LODEN, Agent
PHONE 728-6122 — BOONEVILLE, MISS. — P.O. BOX 506

LOANS

CASH



Carry it away today!
It's really very simple; you need money... we have it. Let's get together today for friendly, confidential loans which may be arranged on automobile, furniture, livestock, real estate.
"Remember, We Are Home Folks"
HESTER LOANS, Inc.
Billy Hester, Owner and Manager
E. Church St. Phone 728-6867

JUST BEFORE SERVING
Since peanuts absorb moisture readily, mix the nuts in salads and sauces just before serving.

RESTORING WHITENESS
Restoring white shirts, blouses or other articles that have been yellowed by chlorine bleach can be done. Maybe not completely, but the yellowing can be reduced. The treatment must be done before the garment is ironed.

Yellowing of a fabric that has been treated with chlorine-type bleach is an indication of the presence of a chlorine retaining resin finish. Sometimes the damage doesn't show up until the garment is ironed.
Your insurance against such loss is to look for labeling information regarding the use of bleaches or to look for garments with labels stating that the fabric is not affected by chlorine type bleaches. Or use a bleach that is guaranteed safe for all fabrics. Check the information on the box or bottle of bleach.
By using a commercial color remover, it is possible to reduce the yellowing — not always completely eliminate it — on white clothes. Follow directions on package of commercial remover.

On colored clothes, you may use a stripping agent. For a "stripping" soak colored fabrics for one-half hour or more in a solution of one teaspoon of sodium thiosulfate, which is available at drug stores, to a quart of water, then rinse thoroughly.

ON THE LOCAL SCENE

Mr. and Mrs. Billy Wales and children of Huntsville, Ala. were down for the weekend with Mr. and Mrs. Ben Holley and Mr. and Mrs. Charlie Barron and Harry Mac Wales, in the service stationed in Miami, Florida, who was also at home.

Dr. Jeff C. Cunningham, while enroute to Corinth, stopped by Friday for a visit with relatives. Dr. Cunningham is pastor of Galloway Memorial Methodist Church, Jackson, Miss.

Mrs. J. R. Thomas entered the Community Hospital in Tupelo on Monday for ear surgery, which was scheduled for Wednesday. Friends will await news of her improvement with much interest.

Mr. and Mrs. Fritz C. VanBrunt left Monday for Memphis where they boarded a plane for Los Angeles. From this point they will go to the Hawaiian Islands for a winter sojourn of eleven weeks. After a week in Southern California, they plan to return home March 1st.

Dr. and Mrs. Tommy Morrow and family of Brownwood, Texas were guests of Mr. and Mrs. John Morrow and Mrs. W. F. Morrow last week.

Dr. and Mrs. Turner Googe of Marshall, Texas were guests last week in the home of his sister, Mrs. J. R. Thomas. Dr. Googe is Director of the Harrison County Health Department.

Mrs. John Morrow was in Memphis last Thursday visiting her sister, Mrs. R. C. Rinehart.

Visiting in the home of Mr. and Mrs. Herman Boren during the Christmas holidays were Mr. John Mick of Clayton, N. J., Mr. Ray Gene Boren and a friend, Mr. Frank Deano of Glassboro, N. J. After their visit with the Boren family, they visited with W. V. Boren and sons, Mike and Allen in Tampa, Fla., and friends in Key West, Fla. before returning home.

Mr. and Mrs. Richard Krahn and Margaret of Kenosha, Wis. spent the New Year's holidays with Mrs. Rose Whitaker and Mr. and Mrs. Billy Kelton and Cindy. They were joined on New Year's Day by Larry Hall and Frank Sedeska of Kenosha.

THE STATE OF MISSISSIPPI
TO: HAROLD H. FRANKS, whose Address is 2516 Auburn Drive Cocoa, Florida
You are summoned to appear before the Circuit Court of the County of Prentiss in said State, on the Second Monday of February, A.D., 1966, to defend the suit No. 3438 in said Court of Percy T. White, Owner of Booneville Lumber and Supply Company, Booneville, Mississippi, Vs. L. A. Slayton, et al wherein you are a defendant.
This January 6 1966.
Roy Lowrey, Clerk. 42-4tc

William L. White Going To Okinawa

WICHITA FALLS, Texas—Airman Third Class William L. White, son of Mrs. Willie D. White of Route 6, Booneville, Miss., has been graduated at Sheppard AFB, Texas, from the training course for U. S. Air Force aircraft mechanics. Airman White, who attended Booneville High School, is being reassigned to Okinawa, for duty. His father, Tomas D. White, resides on Rt. 2, Booneville.

For **COLDS** take **666**

Just Call.. 728-5591
We'll Be There
G & W CLEANERS

Patsy Ann Smith Member Of MSCW Judicial Council

COLUMBUS, Miss. — Miss Patsy Ann Smith of Booneville has been elected to the Student Association judicial council at Mississippi State College for Women by members of her freshman class.

Miss Smith, daughter of Mr. and Mrs. C. B. Smith of Route Three, Booneville, won the post as Justice in a runoff that came from a field of 14 candidates all nominated through petitions by their classmates.

At MSCW, Miss Smith is majoring in speech correction with a minor in psychology. At Booneville she was a class officer, a member of the Beta Club, the Music Club, and was named to Who's Who.

NOTICE TO BIDDERS
ADVERTISEMENT FOR BIDS FOR ONE USED PICKUP TRUCK FOR CITY CEMETERY AND PARK FOR THE CITY OF BOONEVILLE, MISSISSIPPI.

It is the intention of the Mayor and Board of Aldermen of the City of Booneville, Mississippi to purchase a used 1960 to 1964 model 6 cylinder one-half ton pickup truck with custom cab, heater and defroster.

Sealed bids on the above truck, for either of the models for the years above mentioned should be filed with the Clerk of the board at the City Hall at Booneville, Mississippi on or prior to 7:00 o'clock P.M. CST, January 17, 1966.

The Mayor and Board of Aldermen reserve the right to reject any and all bids.

Done by order of the Mayor and Board of Aldermen of the City of Booneville, Mississippi, on this January 4, 1966.
O. J. Robertson, City Clerk (SEAL) 41-1tc

NOTICE OF TRUSTEE'S FORCLOSURE SALE
WHEREAS, EVERETTE C. MAYO and wife, ALICE B. MAYO, did on September 13, 1965, execute and deliver to Joe M. Hudspeth as Trustee for NORTH MISSISSIPPI SAVINGS & LOAN ASSOCIATION, a certain Deed of Trust, found of record in Book 76 at page 98-101, Land Mortgage Records of Prentiss County, Mississippi, to secure an indebtedness therein described in favor of the said North Mississippi Savings & Loan Association, and

WHEREAS, default was made in the payment of the indebtedness secured by said Deed of Trust, and North Mississippi Savings & Loan Association, the beneficiary of said Deed of Trust and the holder of the Note and indebtedness secured thereby, having called upon the undersigned to do, the undersigned Trustee will on the 14th DAY OF JANUARY, 1966, OFFER FOR SALE AT PUBLIC AUCTION, AND SELL FOR CASH, BETWEEN THE HOURS OF 11:00 O'CLOCK A.M. AND 4:00 O'CLOCK P. M., at the Main Front Door of the Courthouse of Prentiss County, Mississippi, at Booneville, Mississippi, to the highest and best bidder, the following described real property lying and being situated in Prentiss County, Mississippi, to-wit:

Part of the South Half of the Northwest Quarter of Section 31, Township 5, Range 7 East, described as follows: Beginning at the Northwest corner of said South Half of said Northwest Quarter and running South with the West boundary of said Quarter 300 feet, thence East 290 1/2 feet; thence North 300 feet; thence West 290 1/2 feet to the point of beginning, containing 2 acres, more or less. Subject

to right-of-way for public road. The undersigned Trustee believes the title to said property to be good, but will convey only such title as is vested in the undersigned as Trustee.

WITNESS the signature of the undersigned Trustee and posted on this 20th day of December, 1965.
JOE M. HUDSPETH, TRUSTEE. 39-4tc

NOTICE TO CREDITORS
Letters Testamentary having been granted on December 28, 1965 by the Chancery Court of Prentiss County, Mississippi to the undersigned upon the Estate of Mrs. J. E. Blythe, deceased, notice is hereby given to all persons having claims against said estate to present the same to the Clerk of said Court for probate and registration according to law within six (6) months from this date or they will be forever barred.

This December 30 1965.
Mrs. Mary Jane Martin Richard D. Blythe EXECUTORS 40-4tc

CHANCERY COURT SUMMONS
NO. 8748

To John F. Cox
Address unknown, after diligent search and inquiry.
The State of Mississippi,
You are commanded to appear before the Chancery Court of the County of Prentiss, in said State on the 4th Monday of March (28th) A.D., 1966, to defend the suit in said Court of Mrs. Jennie Cox Beane vs. John F. Cox, wherein

you are a Defendant.
This 18th day of December A.D., 1965.
Bluford Allen, Clerk
By: Eloise Maddox, D.C. (SEAL) 39-4tc

VOTE FOR
R. R. (Brown) Kennedy
For Justice of the Peace
First District of Prentiss County
in the Special Election February 2, 1966.

Plumbing & Electric SERVICE
Septic Tanks Pumped Out and Cleaned.
TOY WILEMON
E. Hatchie St. 728-5535

NOTICE HOMESTEAD TIME
Is
January 1st-April 1st
If you own a Car or Truck, or both, bring your tag numbers.
New home owners, please bring your deed.
JOHN M. MORROW
TAX ASSESSOR

To Another Big Year!

(and believe it or not it's our 3rd)

We have lots of wonderful things to celebrate and we hope you'll stop by to help us. We love seeing our old friends and making new ones and we'd like to introduce you to one of the best shoes in the house

WEYENBERG
Shoes for Men

MORGAN'S SHOE STORE
Booneville Baldwyn

Loafer.

PERFORMANCE THE CHEVROLET WAY

It's our Turbo-Jet 396: the V8 strong enough to run your Chevrolet and its automatic transmission, power steering, air conditioning, power-windows, AM/FM Multiplex Stereo radio. And more. Without even breathing hard.

Reason is, a Turbo-Jet V8 breathes deeper. Breathes freer. Delivers more usable power whenever you need it—like for safer passing. Works more efficiently. Where the smaller engine hurries, a Turbo-Jet V8 just loafs along. You try it, at your Chevrolet dealer's. And nowhere else.

We offer two Turbo-Jet 396 V8s. for '66. You can order 325 hp in any Chevrolet; 325 or 360 hp in a Chevelle SS 396. There's also a 427-cu.-in. Turbo-Jet (up to 425 hp) available in Chevrolets and Corvettes.

Camaro Custom Coupe Corvette Sting Ray Coupe Chevelle SS 396 Sport Coupe

All kinds of cars... all in one place... at your Chevrolet dealer's Chevrolet • Chevelle • Chevy II • Corvair • Corvette

BILLINGSLEY CHEVROLET COMPANY
Phone 728-4462 Booneville, Miss.

Just Scribbling

MRS. ED JOHNSON

The Brotherhood Bible Class of the First Methodist Church gave a television set to the County Home this week. It was thoughtful of them and it's nice to know there are some good people left in the world... and some who still have money after Christmas.

I've been working on a program about "The Threat of Communism" and I've made up my mind to try to see that more publicity is given on the evils of communism—either in this column or elsewhere

NEVER THAW FROZEN PIPES WITH AN OPEN FLAME



her brother, Jimmy Ingram, wore a wedding gown of white satin featuring a chapel train. Her veil of illusion fell from a crown of pearls. Her bridal bouquet was a white orchid on a white Bible, surrounded by lilies of the valley.

Mrs. Kathryn Stokes, matron of honor, wore a street length dress of green velveteen.

The bridesmaids were Misses Moiss and Margie Jackson, who wore red velveteen. All attendants wore matching pill box hats with matching veils and carried long stem white gladioli with satin streamers.

Sammie Harris served the groom as best man. Ushers were Bobby Ingram and Henry Nanney.

The bride's mother wore a light blue dress with a white corsage, while the groom's mother wore an aqua three-piece suit with a pink carnation corsage.

The couple will live in the Hous-ton Community.

Banner-Independent
Entered as Second Class Matter at the Post Office at Booneville, Mississippi, under the Act of Congress of March 3, 1879.
Ed Johnson... Editor & Publisher



MR. AND MRS. JIMMY RAY NANNEY

Miss Louise Ingram And Jimmy Ray Nanney Wed In Church Ceremony

Mr. and Mrs. Jimmy Ray Nanney were married December 21 at the Fairview Baptist Church with the Reverend T. ... Parker officiating before a background of white gladioli, and candelabra holding lighted white tapers.

The bride, the former Miss Louise Ingram, is the daughter of Mrs.

Luraine Ingram of Marietta and the late Mr. Thomas Ingram. The groom is the son of Mr. and Mrs. Ray Nanney of Fulton.

Teddy Ledbetter, vocalist, sang "The Lord's Prayer" and "Whither Thou Goest." Traditional wedding marches were used.

The bride given in marriage by

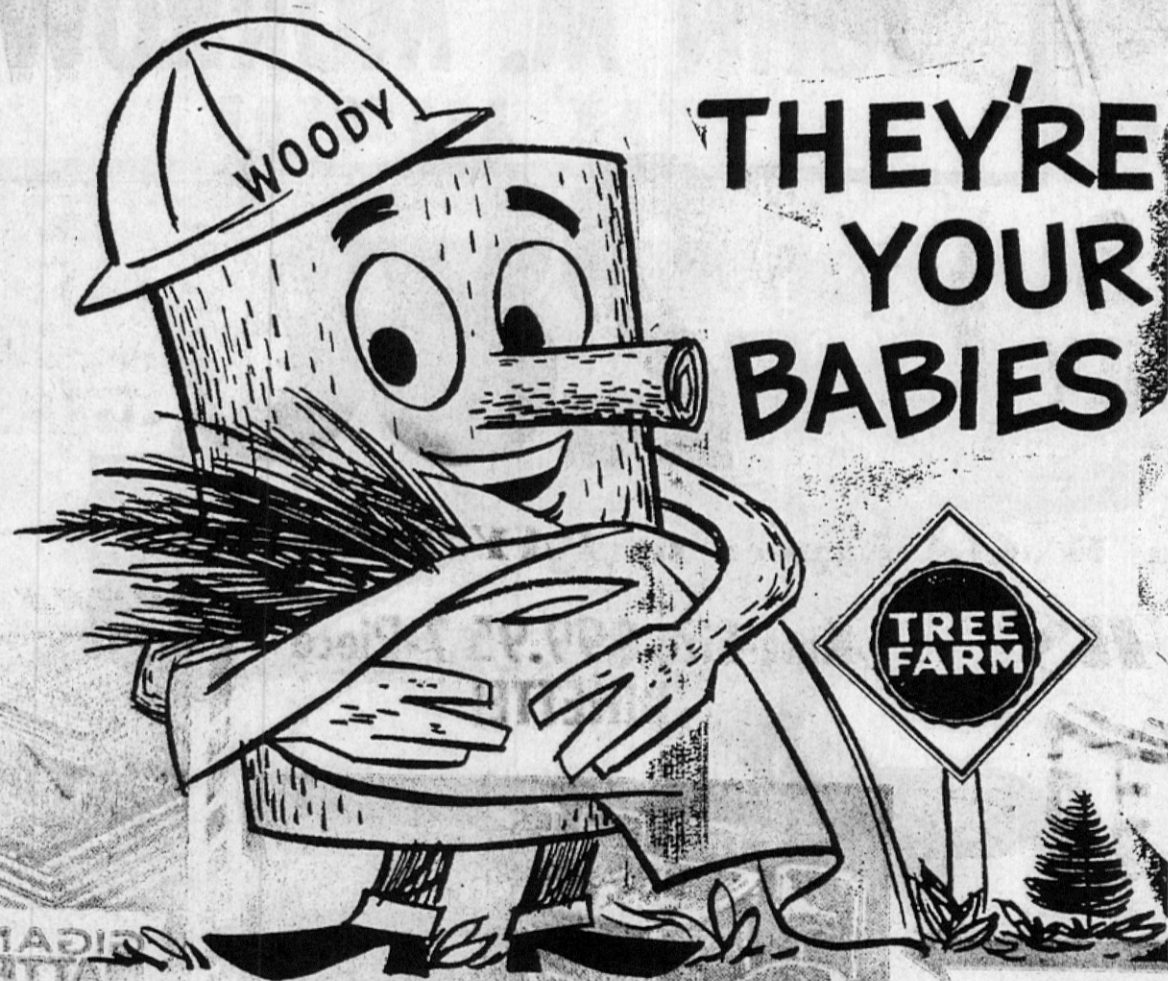
We've MOVED

From First Street
to
College Street

(Across From Sadie's 5 & 10)

GODDARD JEWELRY

BETTER LIVING FROM TREES



Whether you plant them, grow them or harvest them.

Whether you hunt, fish or picnic—trees are your babies.

Tree Farming means full use of the forests for wood, wildlife, water and recreation.

WOOD RECREATION



WATER WILDLIFE

HELP KEEP THE FORESTS GREEN AND GROWING

The PEOPLES BANK and Trust Company



Member Federal Deposit Insurance Corporation

in the paper.

For instance, in Communism, the party is the only employer, the only educator, the only medium of news and communications. The communist party runs the life of each individual with much the same absolute control as a warden over the prisoners in an institution. Henry J. Taylor, former United States Ambassador to Switzerland, writes, "It is impossible for us to put ourselves in the position of a mass mind over 200 million people where a government controls every newspaper, radio, moving picture, billboards, loudspeaker, book, encyclopedia, library, training center, school, university and all sources of information.

Naturally the part I dislike the most is no freedom of press. While Ed and I don't always agree with what we print in our paid advertising columns, we do believe in the right of our readers to have the space available—provided it is not slanderous, or grounds for legal prosecution.

You, too, can escape the task of scraping your windshield, when the ice and snow gets here, by buying a windshield cover from Boy Scout Troop No. 37 members or at the office of the Banner-Independent. It's adjustable, hooks onto door handles, fits front and rear windows of cars and trucks, will not tear, will not mildew, protects from frost, ice and snow in winter and from dust and tree dripping in summer... and only \$3.00. The Scouts are raising money to be used in buying equipment, etc., so plan to get a cover now.

A GENTLEMAN told me, "Footprints in the Sands of Time will be made by high heel shoes."

I can't sew, crochet, knit, etc., but I really enjoy cooking, and cook three meals a day most days. Our sons have always come home from school at the noon hour. I usually cook dinner as soon as I've finished breakfast except for the cornbread which I run in and cook about 15 or 20 minutes before noon.

However, it's breakfast when I have to have all my faculties working. Most of the time we eat sausage and eggs—two each—all fried. Ed and I like ours over medium. One of the sons likes his between medium and well done—soft but not "runny"—the other likes his well done, but not hard. I have to cook them slow because none of us like even a tinge of brown around the edge and none of us like for them to break open.

Challenged to get 8 eggs fried right each morning makes all other problems of the day easy to cope with... now you know my secret.

Till next week,
Helen

WE'RE CONTINUING OUR After-Christmas Clearance Sale

One Rack of
SCHOOL DRESSES
1/2 PRICE

One Rack of
VELVETEEN DRESSES
Toddler Sizes 1-4
1/2 PRICE

All Other Winter Merchandise
1/3 OFF

JAN-LYNN SHOPPE
Mrs. A. L. Galloway

Southern Belle Smoked Tenderized

Hams Butt Portion **lb. 69c** Shank Portion **lb. 59c**

Sirloin Steak U. S. Choice-Heavy Steer-Properly Aged **lb. 79c**

Fryers U. S. Grade A Purnell Pride, Whole **lb. 27c**

50 Top Value Stamps FREE with purchase of any cut
U. S. CHOICE BEEF ROAST

Back Bone Fresh, Lean, Tender Country Style **lb. 59c**

Bologna Good Quality-Sandwich Sliced **3 1/2 \$1.00**

BACON
Armour's Matchless

lb. 69c

Miracle Whip Salad Dressing Qt. **59c**

- FRESH PRODUCE
- YELLOW ONIONS** . . . 3 lbs. **19c**
 - CARROTS** 2 pkgs. **19c**
 - RADISHES** 2 pkgs. **15c**
 - BAG ORANGES** **39c**
 - RED DELICIOUS
 - APPLES, dozen** **29c**
- 50 Top Value Stamps Free with pur. 2 botls.
Kraft's New Liquid Imperial Italian and Secret Salad
- SALAD DRESSING, 8-oz.** **39c**
- DEL MONTE ECONOMY SIZE
- CATSUP, 20-oz. bottle** **27c**
- DEL MONTE PINEAPPLE-GRAPEFRUIT
- DRINK, 46-oz.** **29c**
- CONTADINO—BONUS PACK—50% MORE
- Tomato Sauce, 12-oz.** 2 for **25c**
- PACKERS LABEL
- TOMATOES, No. 1 can** **10c**
- CUT GREEN
- BEANS, 303 size** 2 cans **29c**
- PRIDE OF ILLINOIS WHITE OR YELLOW CREAM STYLE
- CORN, 303 size** 2 cans **39c**

Instant Coffee Folger's 10-oz. Jar **\$1.19**

- BUSH WHITE OR YELLOW
- HOMINY, 303 size** . . . 3 cans **29c**
- BUSH
- Pork and Beans, 300 size can** . **10c**
- BREAST OF CHICKEN — ALBACORE
- TUNA, Solid White, can** **39c**
- Royal Gelatin, all flavors** 3 for **29c**
- CRISCO, 3-lb. can** **83c**
- WITH \$5.00 ADDITIONAL PURCHASE
- FROZEN FOODS
- ORANGE JUICE** 3 for **\$1.00**
- FROSTY SEAS—JUST HEAT AND SERVE
- FISH STICKS, 8-oz.** **39c**
- LIBBY'S FRESH FROZEN
- Butter Beans, 10 1/2-oz.** 2 pkgs. **43c**
- WESPAC RIPPLE CUT
- POTATOES, 10-oz. pkg.** **10c**

SUGAR Godchaux or Domino **10 lbs. 89c**

- ARMOUR'S STAR — ZIP OPEN CAN
- Corn Beef Hash, 15 1/2-oz.** . . . **44c**
- LIBBY SLICED OR CRUSHED
- Crisco Oil, Med. Size, 12-oz.** . **29c**
- Pineapple, No. 1 1/2 size** 2 for **49c**
- BY GENERAL MILLS—SWEET MILK OR BUTTERMILK
- BISCUITS, Quick & Easy** 6 cans **49c**
- CONTADINO
- Spiced Peaches, 2 1/2 size** . . . **29c**
- MARTHA WHITE SELF-RISING
- Blue Bonnet Oleo, lb.** **29c**
- MEAL, 5 lbs.** **38c**
- PLANTER'S SMOOTH OR CRUNCHY
- PEANUT BUTTER, 12-oz.** **39c**

WITH COUPON AND \$5.00 ADDITIONAL PURCHASE

ALL SOFT

DRINKS

1/2 case **39c**

COUPON

With Coupon and \$5.00 Purchase

ALL SOFT DRINKS
1/2 Case 39c

LIMIT ONE

Expires 1-19-66

COUPON

50 FREE TOP VALUE STAMPS

With Coupon and \$5.00 Purchase

Excluding Tobacco

LIMIT ONE

Expires 1-19-66

M & H FOOD MARKET

Rankin Fite Elected Chairman Of Tenn.-Tombigbee Waterway Group

POINT CLEAR, Ala. — State Rep. Rankin Fite was elected today as Chairman of the Tenn.-Tombigbee Waterway Development Authority at the group's quarterly meeting held at Point Clear, Ala.

The Authority is promoting a navigable waterway connection between the Tennessee River and the Gulf of Mexico via the Tombigbee River.

Rep. Fite, a veteran legislator from Hamilton, Ala., is a former Speaker of the Alabama House of

of the four-state compact that includes Alabama, Kentucky, Mississippi and Tennessee.

Mr. Paxton was praised by the Authority for his work as Chairman in part "As Chairman, Ed Paxton gave unselfishly of his time and energy on behalf of the Tennessee-Tombigbee Waterway Authority. He has made many special trips throughout the country to help promote the Waterway. Mr. Paxton's chairmanship has been marked by determined and energetic leader-

Representatives and is currently serving as Floor Leader for the Wallace Administration in the House of Representatives. Mr. Fite also serves as Chairman of the powerful Ways and Means Committee of the House.

He succeeds Edwin J. Paxton, Jr., Editor of The Paducah Sun-Democrat of Paducah, Ky., as Chairman

ship." Mr. Fite was nominated in a letter to the Authority written by Gov. George C. Wallace. The Governor stated, "I have known Rankin for many years and I am sure that his wisdom, ability, and influence will make him a fine Chairman for the Tennessee-Tombigbee Authority. I think that it is appropriate that Rankin be named Chairman because he was one of the founders of this organization and has been a valued member since that time."

Gov. Wallace added, "The Tennessee-Tombigbee Waterway has my complete support. No project would mean more to the continued tremendous growth of Alabama and the South than the Tennessee-Tombigbee Waterway."

Tennessee-Tombigbee Administrator, Glover Wilkins, said, "We are fortunate to have a man possessed with the ability and leadership of Rankin Fite as our new chairman. He has been an outstanding leader in Alabama political and civic affairs for many

years, and he has been a very valuable Authority member."

He added, "Mr. Paxton has been an outstanding chairman for the Tennessee-Tombigbee Authority. He has worked hard as Chairman and has cooperated to the utmost with everyone concerned with the project. It has been an outstanding year under his leadership."

The meeting was also attended by Mr. Ken Bousquet, professional staff assistant to the Subcommittee on Public Works of the Senate Appropriations Committee.

SHRUBS — TREES — LANDSCAPE

GOODWIN'S NURSERY

Phone Day 728-5433 — Night 728-6573

Shrubs Gardenias Peat Moss
Evergreens Grasses Hedge
Azaleas Hulls Pecans

NEXT TO GOODWIN'S LAUNDRY
326 Adams Street

Lindsey Infant Dies Jan. 3rd

Services for an infant child, Teresa Dale, daughter of Mr. and Mrs. Daie Lindsey, were held at the Prospect Church, January 3rd, with Bro. R. C. Spencer conducting the services.

The child was born January 2nd at the Caldwell Memorial Hospital in Baldwin.

In addition to the parents, she is survived by one sister, Penny, one-year-old, and her grandparents, Mr. and Mrs. Dudley Lindsey and Mr. and Mrs. Charlie Yarber of Marietta.

On The Local Scene

Messrs. C. W. and Charles Bolton attended a Ford tractor convention in Dallas, Texas, last Sunday. They visited Miss Lynne Bolton, who is employed in Dallas, during their visit.

Dr. Myres S. McDougal, professor of the law school at Yale University and one of the nation's best experts on International Law, was the guest Saturday of Mr. and Mrs. Toy Smith and other relatives.

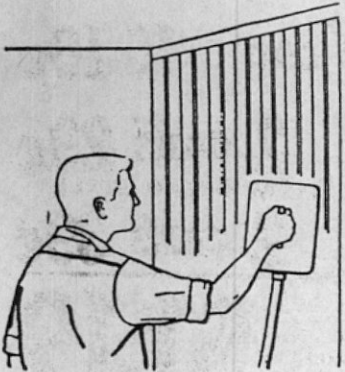


WALLPAPER REMOVAL

Think about your best friend's house. Do you really like the color of the living room? Do you really like the wallpaper in the bedroom? Would you want the exact same thing in your own home?

Chances are if you're like every other individualistic American you wouldn't want it in your house. That's why thousands of different wallpaper patterns must be made available to the buying public. However, we can't always pick and choose exactly what we want in our homes.

If you just bought a home that has been previously occupied you'll probably make your first project the redecorating of the house. It's easy to paint over another color but when it comes to wallpapering that's a job of a different pattern.



You'll want to remove the old wallpaper first. And there is only one sure-fire way to do this. Steam it off.

You can rent a wallpaper steamer from your local rental or hardware dealer. In a few hours you'll have removed all the paper in the room.

Keep the burner and boiler outside the room. Steam hose should be long enough to reach from boiler to furthest and highest point in room.

Use the steam plate experimentally at first. You'll soon learn how long to leave plate against wallpaper. Steam will loosen paper sufficiently to strip off. Rising steam will enable you to remove ceiling paper even easier, so do the top last.

Application of new paper will be covered in a following column.



January is Guild Month. The Wesleyan Service Guild is part of the Methodist Church, although church membership is not required. The Guild is also a part of the Woman's Society of Christian Service, to which it has an auxiliary relationship; however, the Guild has its own officers, has freedom to formulate its own plans and program and expend its own funds, as long as it keeps within the framework of the Woman's Society. Wesleyan Service Guild meetings are held evenings, weekends and other times when employed women are free to attend. Consideration is given to the needs and interests of the career woman in industry, services, business and professions.

The January meeting of the First Methodist Guild will be in the home of Mrs. Mae Smith at 7:00 p.m., Monday, January 17.

NEVER BEFORE! PROBABLY NEVER AGAIN!

THIS MONTH ONLY AT PATE'S Furniture & Appliance Co.

BOONEVILLE, MISS.

3 for 2

SALE

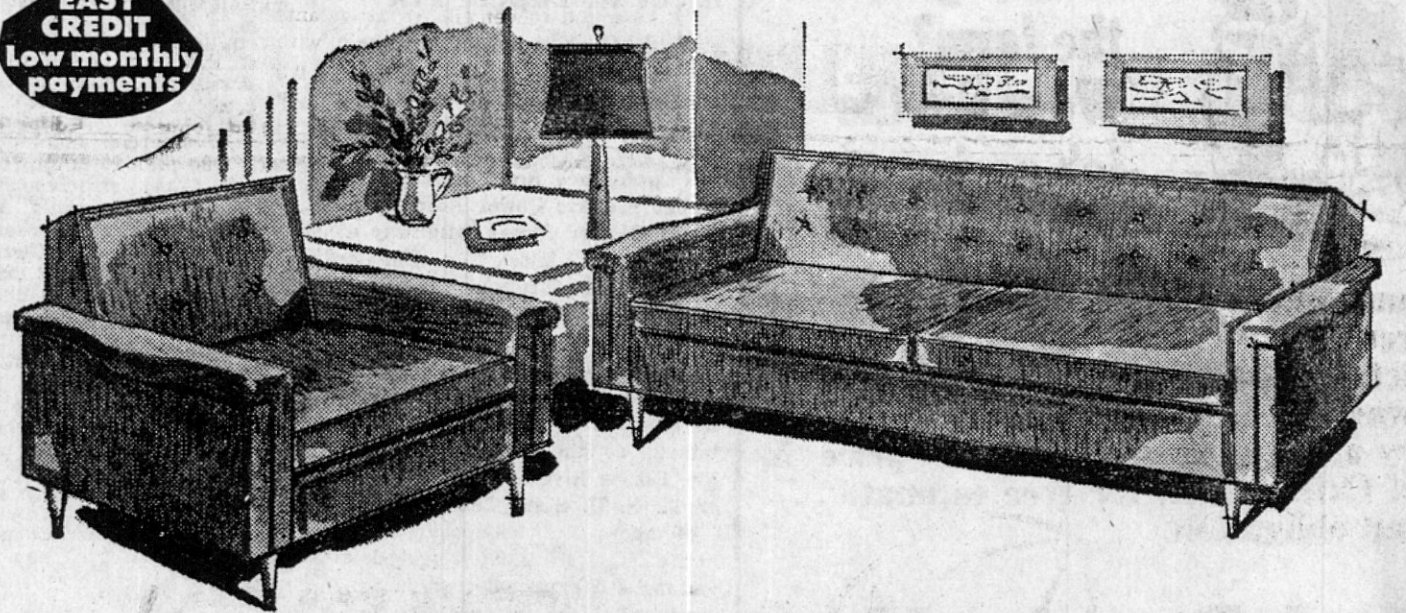
MANUFACTURER'S CLOSE-OUT!

BUY 2 - GET 3! FREE BEDROOM OR DINETTE SUITE!

LAST YEAR'S STYLES TO BE SOLD BELOW WHOLESALE!

Sale Starts Today - 8 a.m.
Be Here Early!

EASY CREDIT
Low monthly payments



A Fantastic Offer!

A fabulous special purchase from the manufacturer makes this special offer possible! — We bought them far below wholesale and have priced them so low even our competition won't believe it! Here's what you get! — GIANT 2-pc. LIVING ROOM SUITE, magnificently tailored, guaranteed construction; BEDROOM SUITE — AND — YOU GET ABSOLUTELY FREE A KING-SIZE 7-pc. DINETTE SUITE — OR — RECLINER! Don't Wait — Supply is Limited!

You Get Living Room Suite...
You Get Bedroom Suite...
You Get Dinette Suite...

ALL 3 FOR ONLY

\$288

SPECIAL EASY CREDIT TERMS

YES 3 SUITES For What You Would Expect to PAY FOR ONE

YOURS

FREE

King-Size \$99.95 7-Piece DINETTE!



GIGANTIC MATTRESS SALE

\$99.95 GIANT 7-PC. DINETTE When You Buy This Beautiful 2-PC. LIVING ROOM SUITE and BEDROOM SUITE FOR ONLY . . . \$288.00

JUST IMAGINE! This 7-PC. DINETTE is yours FREE with the purchase of 2-pc. Living Room Suite — PLUS — Bedroom Suite valued at \$119.95 — All For The Low, Low Price of \$288.00. (OPTIONAL — if you prefer, you may get another bedroom suite in place of Dinette — or a RECLINER CHAIR valued at \$99.95.)

SMALL DOWN PAYMENT DELIVERS! Pay Only 10% Down! Enjoy furniture as you pay! Immediate Delivery!

Illustrations Shows Are Not Exact.

No Expensive Service Policy to Buy... Free In-Warranty Service... Free Delivery!

PATE'S FURNITURE AND Appliance Company

Main Street

BOONEVILLE, MISSISSIPPI

Phone 728-5959

A jubilee represents 50 years.

MILTON MOTOR CO.

Booneville, Miss.



NEW - USED
Cars - Trucks
Sales & Service

COUNTY AGENT NOTES

TAYLOR SMITH, County Agent

DAIRY NOTES

Plenty of clean water, easily accessible is mighty important toward successful dairying. Water is the cheapest constituent of milk! A cow producing 30 pounds of milk daily must have at least 120 pounds of water. Cows like to drink often, several times a day. Experiments show that cows getting water free choice produced 4 per cent more milk than those



Mr. Smith

watered twice daily. With plenty of water, cows eat more forage. Cows will not walk great distances very often for water. If water is not close by, the cow will just drink less, eat less and produce less milk.

It will pay you to see that your cows have all the good fresh water they want anytime they want it. It is especially important to have water around the barn as cows often "tank up" on water both before and after milking.

OUTLOOK

The overall economic outlook for 1966 is good. Prospective increases in spending by consumers, business and government point to an expanding economy that should result in increased consumer demand for goods and services.

Mississippi agriculture is expected to fare as well or better in 1966 than in 1965. Cash receipts from crops and livestock should total around the same as last year, but government payments are expected to be higher.

This outlook is based on normal weather conditions and no major change in international conditions. Continued large exports of farm products are expected to meet the growing overseas demand.

Farm production expenses are also expected to rise but not as much increase is expected as in 1965. Total net farm income will likely be higher in Mississippi in 1966. GET YOUR SHARE

This year make plans to get your share of the 1.5 billion dollars in farm income expected by 1975. Do it by stepping up your management.

For all crop production, check and select the best variety to plant; get a soil test and use all the fertilizer that will return a profit. Control weeds, insects and harvest quality.

Right now is a good time to begin the weed control program. On pasture and idle land you can spray with 2,4-D and kill all the dock and thistle that is up and growing. Just be sure that the temperature is 60 deg. F. or above when you spray.

Retired Persons To Meet In Tupelo Tue.

TUPELO, Miss. — The Tupelo Area Chapter of the American Association of Retired Persons will hold its regular monthly meeting at 2 p.m., January 18th, 1966 in the Conference Room of the Tombigbee Electric Power Association, South Gloster Street (Highway 45 So.) Tupelo, Miss. The Chapter Area includes Tupelo and Lee County as well as all bordering counties.

For the January date, the Program Committee, of which Mr. W. R. Samuels is Chairman, has obtained, as the featured speaker, Mr. Dorris Rivers, Program Leader M. S. U. State College, Miss.

Members and friends from the entire area are invited and delegations are expected from many communities in the area.

In addition to Mr. Rivers' address a short business meeting will be held according to Paul F. Newell, the Chapter President.

A fine meeting is anticipated.

The News From Frankstown Mission

I wish I could write a short story on an important subject, making it in abstract form, but I doubt if it can be done, when I mention a man like Hon. James A. Cunningham of Booneville, Miss., who is practicing law in full force at 92 years old.

He is a unique individual who set out, illiterate, at 19 years old, in school and out, not just to learn a thing, but to master things, and he came up mastering a culmination of things, and dove-tailed into a diversified educator, mastering the Arts of Philosophy and Science. Some of his classic writings are unexcelled, and recognized as such in some of our outstanding universities.

"Mr. Jim" is hard to equal in this day, and may not be surpassed in generations to come, and here goes our wishes to him, that he sees many, many more years of happy, useful continuance.

J. M. Franks
A Chief Promoter
Frankstown Mission
Baldwyn, Miss.

NOTICE TO BIDDERS

ADVERTISEMENT FOR BIDS FOR TWO-TON TRUCK FOR CITY OF BOONEVILLE, MISSISSIPPI FIRE DEPARTMENT.

It is the intention of the Board of Mayor and Aldermen of the City of Booneville, Mississippi to purchase one (1) two-ton truck with the following specifications: 150-inch or more wheel base, two (2) speed axle, 15,000 pound rear springs and overload springs on the rear, 5,000 pounds front springs, standard cab, heavy duty booster heater and defroster, 6 1/2 inch wheels, 825 x 20 - 10 ply nylon ground grip dual rear tires, West Coast mirrors and signal lights. Color: Fire Truck Red. Eight (8) cylinder engine, not less than 330 cubic inch.

The Board desires to purchase said truck on a trade-in basis for a 1960 model two-ton Ford V-8 chassis, now in use with the Street Maintenance Department, where it can be inspected.

Sealed bids on the above truck on a trade-in basis are to contain earliest delivery date possible, and are to be filed with the Clerk of this Board at the City Hall at Booneville, Mississippi on or prior to 7:00 o'clock p.m., CST, January 17, 1966; and the Board reserves the right to reject any and all bids.

Done by order of the Board of Mayor and Aldermen of the City of Booneville, Mississippi, this January 4, 1966.

O. J. Robertson, City Clerk (SEAL) 41-1tc

ATTENTION:

All Contractors, builders or residential, commercial and industrial owners, who plan to build, re-build or alterate any structure within City Limits of Booneville, Mississippi must make application for building permit at City Clerk's office. Application must be made in accordance with Southern Builder's Code. This Building Code has been in effect for over three years and all should be familiar with its laws, Section 106-1.

No person, firm or corporation shall erect, construct, enlarge, alter, repair, move, improve, convert or demolish any building or structure in the City or cause the same to be done, without first obtaining a separate building permit for such buildings or structure, from building Official.

(C) Ordinary minor repairs may be made with the approval of Building Official, without a permit, provided that such repairs shall not violate any of the provisions of the Code.

(D) Where Construction is commenced before a permit is obtained, the permit fee shall be doubled. As of February 1, 1966, Corporations, firms or individuals engaged in building must comply with rules or will be subject to Penalty.

Nolan Wheeler, Building Inspector. 41-3tc

SUBSTITUTED TRUSTEE'S SALE NOTICE

Pursuant to the provisions of a Certain Deed of Trust executed by James A. Hartsfield and Marcella Hartsfield, his wife, on the 26th day of September A.D., 1962, to secure certain indebtedness therein mentioned to United States Shell Homes, Incorporated, which Deed of Trust is duly recorded in the Chancery Clerk's office of Prentiss County, Mississippi, in Deed Record Book No. 67, Page 581-582, I will as Substituted Trustee in said Deed of Trust, on the 24th day of January A.D., 1966, at the West door of the Prentiss County Courthouse in Booneville, Mississippi within legal hours offer for sale, at public out-

cry, to the highest bidder for cash the following described property:

A part of the James A. Hartsfield property as recorded in the Prentiss County Records in Deed Book 52 at Page 522, lying and being in the Southwest Quarter of Section 21, Township 4, Range 8, more particularly described as follows: Starting from junction of roads and running 120 feet North, thence 120 feet East, thence 127 feet South, thence West 127 feet more or less back to starting point, all of said land being located in Prentiss County, Mississippi, such title conveyed as is vested in me as Substituted Trustee aforesaid. This 24 day of December, 1965. HERBERT F. BAUCH, Substituted Trustee. 40-4tc

TO THE QUALIFIED ELECTORS OF THE PRENTISS COUNTY SCHOOL DISTRICT

NOTICE OF ELECTION Pursuant to a resolution adopted by the Board of Supervisors of Prentiss County, Mississippi, adopted on the 5th day of January, 1966, an election will be held at all the precincts in the Prentiss County School District on the 2nd day of February, 1966, for the purpose of submitting to the qualified electors of the Prentiss County School District the question of the issuance of bonds of said district in the amount of ONE HUNDRED AND SEVENTY - FIVE THOUSAND (\$175,000.00) DOLLARS for the purposes as set forth in the resolution of the Prentiss County Board of Education now on file with the Board of Supervisors of Prentiss County.

The purposes as set forth in the resolution of the said Prentiss County Board of Education are as follows: For the purpose of using \$30,000.00 of such funds for making general repairs to existing buildings and purchasing equipment at the Booneville Attendance Center;

For the purpose of using \$30,000.00 of such funds for making general repairs to existing buildings and purchasing equipment at the Jumptown High School Attendance Center;

For the purpose of using \$30,000.00 of such funds for making general repairs to existing buildings and purchasing equipment at the Marietta High School Attendance Center.

For the purpose of using \$30,000.00 of such funds for making general repairs to existing buildings and purchasing equipment at the New Site High School Attendance Center.

For the purpose of using \$25,000.00 of such funds for making general repairs to existing buildings and purchasing equipment at the Thrasher High School Attendance Center.

For the purpose of using \$25,000.00 of such funds for making general repairs to existing buildings and purchasing equipment at the Hills Chapel School Attendance Center.

For the purpose of using \$5,000.00 of such funds for making general repairs to existing buildings and purchasing equipment at the Prentiss County School Attendance Center.

WITNESS my signature this the 5 day of January, 1966.

Bluford Allen, Chancery Clerk and Clerk of the Board of Supervisors of Prentiss County, Miss. 41-4tc

RESOLUTION

A resolution of the Prentiss County Board of Education acting as the Board of Trustees of the county-wide school district of Prentiss County, Mississippi, declaring the necessity and requesting the Board of Supervisors of said county to issue and sell one hundred seventy-five thousand dollars (\$175,000.00) worth of bonds for making general repairs and purchasing equipment at the Booneville Attendance Center, the Jumptown High School Attendance Center, the Marietta High School Attendance Center, the New Site High School Attendance Center, the Thrasher High School Attendance Center, the Wheeler High School Attendance Center, and the Hills Chapel School Attendance Center as provided by Chapter 61, Laws of Mississippi, Extraordinary Session, 1955, Chapter 231 Laws of Mississippi, 1950 and other related laws. 41-1tc

NOTICE TO CREDITORS

NO. 8754 Letters Testamentary having been granted on the 5 day of January, 1966, by the Chancery Court of Prentiss County, Mississippi, to the undersigned upon the Estate of Alvie McGee, Deceased, notice is hereby given to all persons having claims against said estate to present same to the Clerk of this Court for probate and registration according to law within six (6) months from this date, or they will be forever barred.

This the 5th day of January, 1966. Pearlle Parks, Jack M. Dubard, Solicitor 41-4tc

NOTICE TO BIDDERS

The Board of Supervisors will at the regular February 1966 meeting on the 7th day of February, 1966 at 11 o'clock A.M., receive bids for installing an automatic fire detection system in the County Home. The installation must comply with the standards established by the

as set out in the "Rules, Regulations, and Minimum Standards for Institution for the aged or infirm" which may be found on file in the Mississippi State Board of Health office of the Chancery Clerk. WITNESS my signature this the 4th day of January, 1966.

Bluford Allen, Chancery Clerk. 41-4tc

RAMBLER PARTS and SERVICE McCOY GARAGE

Highway 45 North

TIRES FOR SALE

Hundreds of Tires To Choose From. Different brands and a wide selection of sizes. Many that are so new they still have tints on the treads.

ALL TIRES ARE GUARANTEED

Prices Start at \$1.95

If you buy in volume, you will save big money with us.

ELLIS WREN TIRE CO.

Formerly located at Lion Service Station in Booneville, Now moved 1/2 mile West on Hwy. 4.



Believe it or not...

An improved product... at a lower price. Continued work by Ful-O-Pep Researchers has resulted in an improved FUL-O-PEP MILK REPLACER... and the lower cost is passed on to you.

Raise better dairy herd replacements with Ful-O-Pep Milk Replacer... 24% protein and highly medicated. It's easy to mix and feed.

Come in and see us soon.

Brown Seed & Implement Company

YOUR HEADQUARTERS FOR FUL-O-PEP FEEDS

NOW JUST ONE MINUTE!



Everyone knows... 5% is more than 4% No Matter How you Figure It!

Don't be misled by some of the figures that are going around these days. 5% just naturally is more than 4% or 4.40% or 4.5% anything percent. In fact, our 5% is much more than 4% compounded interest. Your dividend at North Mississippi Savings & Loan Association amounts to 5.526% when

you save Time Certificates and allow the dividends to accumulate for 3 years at our current rate of 5%. The plain and simple fact is that no one pays more than the 5% dividends of Insured Savings that North Mississippi Savings & Loan Association has been paying for years.

OVER \$7,000,000.00 IN ASSETS AND GROWING.

North Miss. Savings & Loan Association

(A STOCK COMPANY)

Deposits by the 10th Earn from the 1st.

North Miss. Savings & Loan Bldg. - Phone 728-6241 - Booneville

Shampoo your rugs

WITH SPARKLING RESULTS... SAVE HALF THE COST



RENT CLARKE RUG SHAMPOO EQUIPMENT

East Side Hdw. Co.

CLYDE CARTER, Mgr.

PHONE 728-5581

HAWAIIAN HOLIDAY SPECIAL!



SALE-PRICED '66 FORD

A specially built, specially ordered, white or blue full-size Ford. Complete equipment package factory-installed at a price far lower than custom-ordered Fords. Powered by 150-hp Six. Special equipment includes: Pileated all-vinyl seat upholstery • Bright seat side shields • Bright exterior trim • Whitewall tires • Full wheel covers • (Options available.)

Win a week in Hawaii just for coming in! We're offering 30 one-week-long expense-paid trips for two to Hawaii, Honolulu, Kamuela, Kahului. Not a national contest. Enter at your local Ford Dealer's.

Test-drive your favorite Ford at...

FORD DEALER HAWAIIAN HOLIDAY SWEEPSTAKES

MILTON MOTOR COMPANY

Booneville, Miss.

If You're Interested In An A-1 Used Car or Truck, Be Sure To See Your Ford Dealer

Miss Martha Pigford Cook Becomes Bride Of Larry G. Callaway At Columbus

Miss Martha Pigford Cook, daughter of Mr. and Mrs. John Earle Cook of Purvis, was married Saturday, December 11 to Larry Glenn Callaway, son of Mr. and Mrs. M. D. Callaway, Jr. of Columbus.

The ceremony took place at 4 o'clock at the Purvis Methodist Church with the pastor, Rev. M. H. Wells officiating at the double ring ceremony.

The wedding was celebrated before a background consisting of a large sunburst arrangement of white chrysanthemums and gladioli. To either side were tall gold vases of white and yellow chrysanthemums. Highlighting the background were seven branched candelabra holding white tapers carried out the bridal theme. The bride's table and register table were spread with floor length cloths of satin.



Mrs. Larry Glenn Callaway

White camellias and ivy encircled the crystal punch bowl. A diminutive bridal couple which crested with cake, was the one which decorated the wedding cake of the bride's parents.

Mrs. E. C. King, Sr., aunt of the bride, served the cake, and Mrs. Jimmy Williams and Mrs. Roger Atkins, college friends of the bride at Mississippi State College for Women, served the punch.

Mrs. Bob Whitaker of Gulfport, cousin of the bride, presided at the register.

Tea girls were Mrs. O. B. Black, Jr., Elizabeth Black and Sue Flanagan of Gulfport, cousin of the bride, Mrs. R. W. Hagan, assisted with the wedding and reception.

For the wedding trip, the bride changed to a light blue wool costume with white accessories and wore her mother's orchid corsage.

The couple is living at 417 Tenth Street in Columbus.

The bride is the granddaughter of Mrs. J. D. Mitchell and the late Mr. Mitchell of Booneville, descendants of an illustrious family of Mississippi and Tennessee. She is the paternal great niece of the late Hon. Hugh McQueen of Meridian, native of this county, who was the beloved Speaker of the State of Representatives for a long period. He was the leader in the movement to divide Old Tishomingo County, into Prentiss, Tishomingo and Alcorn in 1870.

Following the ceremony, a reception was held in the educational building of the church where arrangements of white and yellow chrysanthemums, ferns and silver candelabra holding white tapers carried out the bridal theme. The bride's table and register table were spread with floor length cloths of satin.

The wedding was celebrated before a background consisting of a large sunburst arrangement of white chrysanthemums and gladioli. To either side were tall gold vases of white and yellow chrysanthemums. Highlighting the background were seven branched candelabra holding white tapers.

Mrs. C. E. Nation was organist and Mrs. Marvin Breazeale soloist. Selections included Leibestraum (Liszt) and Traumeri (Shumann). Mrs. Breazeale sang "O Perfect Love" (Barnby). The traditional wedding marches, The Bridal Chorus from Wagner's Lohengrin and recessional from Mendelssohn's Mid-Summer's Night Dream, were played.

The bride, given in marriage by her father, wore a street length bridal gown of white lace and peau de soie. The empire bodice of lace featured a scalloped neckline and the A-line skirt was of peau de soie. Her short veil was attached to a matching lace cap and she carried a cascade of white rosebuds and tuberoses. She also carried the lace handkerchief which her maternal grandmother, Mrs. James Donald Mitchell and also her mother and two aunts carried in their

reception was held in the educational building of the church where arrangements of white and yellow chrysanthemums, ferns and silver candelabra holding white tapers carried out the bridal theme. The bride's table and register table were spread with floor length cloths of satin.

The wedding was celebrated before a background consisting of a large sunburst arrangement of white chrysanthemums and gladioli. To either side were tall gold vases of white and yellow chrysanthemums. Highlighting the background were seven branched candelabra holding white tapers.

Mrs. C. E. Nation was organist and Mrs. Marvin Breazeale soloist. Selections included Leibestraum (Liszt) and Traumeri (Shumann). Mrs. Breazeale sang "O Perfect Love" (Barnby). The traditional wedding marches, The Bridal Chorus from Wagner's Lohengrin and recessional from Mendelssohn's Mid-Summer's Night Dream, were played.

The bride, given in marriage by her father, wore a street length bridal gown of white lace and peau de soie. The empire bodice of lace featured a scalloped neckline and the A-line skirt was of peau de soie. Her short veil was attached to a matching lace cap and she carried a cascade of white rosebuds and tuberoses. She also carried the lace handkerchief which her maternal grandmother, Mrs. James Donald Mitchell and also her mother and two aunts carried in their

reception was held in the educational building of the church where arrangements of white and yellow chrysanthemums, ferns and silver candelabra holding white tapers carried out the bridal theme. The bride's table and register table were spread with floor length cloths of satin.

The wedding was celebrated before a background consisting of a large sunburst arrangement of white chrysanthemums and gladioli. To either side were tall gold vases of white and yellow chrysanthemums. Highlighting the background were seven branched candelabra holding white tapers.

Mrs. C. E. Nation was organist and Mrs. Marvin Breazeale soloist. Selections included Leibestraum (Liszt) and Traumeri (Shumann). Mrs. Breazeale sang "O Perfect Love" (Barnby). The traditional wedding marches, The Bridal Chorus from Wagner's Lohengrin and recessional from Mendelssohn's Mid-Summer's Night Dream, were played.

The bride, given in marriage by her father, wore a street length bridal gown of white lace and peau de soie. The empire bodice of lace featured a scalloped neckline and the A-line skirt was of peau de soie. Her short veil was attached to a matching lace cap and she carried a cascade of white rosebuds and tuberoses. She also carried the lace handkerchief which her maternal grandmother, Mrs. James Donald Mitchell and also her mother and two aunts carried in their

reception was held in the educational building of the church where arrangements of white and yellow chrysanthemums, ferns and silver candelabra holding white tapers carried out the bridal theme. The bride's table and register table were spread with floor length cloths of satin.

The wedding was celebrated before a background consisting of a large sunburst arrangement of white chrysanthemums and gladioli. To either side were tall gold vases of white and yellow chrysanthemums. Highlighting the background were seven branched candelabra holding white tapers.

Mrs. C. E. Nation was organist and Mrs. Marvin Breazeale soloist. Selections included Leibestraum (Liszt) and Traumeri (Shumann). Mrs. Breazeale sang "O Perfect Love" (Barnby). The traditional wedding marches, The Bridal Chorus from Wagner's Lohengrin and recessional from Mendelssohn's Mid-Summer's Night Dream, were played.

The bride, given in marriage by her father, wore a street length bridal gown of white lace and peau de soie. The empire bodice of lace featured a scalloped neckline and the A-line skirt was of peau de soie. Her short veil was attached to a matching lace cap and she carried a cascade of white rosebuds and tuberoses. She also carried the lace handkerchief which her maternal grandmother, Mrs. James Donald Mitchell and also her mother and two aunts carried in their

reception was held in the educational building of the church where arrangements of white and yellow chrysanthemums, ferns and silver candelabra holding white tapers carried out the bridal theme. The bride's table and register table were spread with floor length cloths of satin.

The wedding was celebrated before a background consisting of a large sunburst arrangement of white chrysanthemums and gladioli. To either side were tall gold vases of white and yellow chrysanthemums. Highlighting the background were seven branched candelabra holding white tapers.

Mrs. C. E. Nation was organist and Mrs. Marvin Breazeale soloist. Selections included Leibestraum (Liszt) and Traumeri (Shumann). Mrs. Breazeale sang "O Perfect Love" (Barnby). The traditional wedding marches, The Bridal Chorus from Wagner's Lohengrin and recessional from Mendelssohn's Mid-Summer's Night Dream, were played.

The bride, given in marriage by her father, wore a street length bridal gown of white lace and peau de soie. The empire bodice of lace featured a scalloped neckline and the A-line skirt was of peau de soie. Her short veil was attached to a matching lace cap and she carried a cascade of white rosebuds and tuberoses. She also carried the lace handkerchief which her maternal grandmother, Mrs. James Donald Mitchell and also her mother and two aunts carried in their

reception was held in the educational building of the church where arrangements of white and yellow chrysanthemums, ferns and silver candelabra holding white tapers carried out the bridal theme. The bride's table and register table were spread with floor length cloths of satin.

The wedding was celebrated before a background consisting of a large sunburst arrangement of white chrysanthemums and gladioli. To either side were tall gold vases of white and yellow chrysanthemums. Highlighting the background were seven branched candelabra holding white tapers.

Mrs. C. E. Nation was organist and Mrs. Marvin Breazeale soloist. Selections included Leibestraum (Liszt) and Traumeri (Shumann). Mrs. Breazeale sang "O Perfect Love" (Barnby). The traditional wedding marches, The Bridal Chorus from Wagner's Lohengrin and recessional from Mendelssohn's Mid-Summer's Night Dream, were played.

The bride, given in marriage by her father, wore a street length bridal gown of white lace and peau de soie. The empire bodice of lace featured a scalloped neckline and the A-line skirt was of peau de soie. Her short veil was attached to a matching lace cap and she carried a cascade of white rosebuds and tuberoses. She also carried the lace handkerchief which her maternal grandmother, Mrs. James Donald Mitchell and also her mother and two aunts carried in their

reception was held in the educational building of the church where arrangements of white and yellow chrysanthemums, ferns and silver candelabra holding white tapers carried out the bridal theme. The bride's table and register table were spread with floor length cloths of satin.

The wedding was celebrated before a background consisting of a large sunburst arrangement of white chrysanthemums and gladioli. To either side were tall gold vases of white and yellow chrysanthemums. Highlighting the background were seven branched candelabra holding white tapers.

On The Local Scene...

Mr. and Mrs. Dean Caldwell are proudly announcing the arrival of their 9 lbs. 6 ozs. baby boy, Timothy Jay. He was born in the Columbia Women's Hospital on January 6 in Washington, D. C. In addition to the new arrival, Mr. and Mrs. Caldwell also have a 4-year old daughter, Cynthia Renee Grandparents are Mr. and Mrs. Edgar Morris of Grenada and Mr. and Mrs. Vance Caldwell of Booneville.

Mr. and Mrs. H. L. Wear of Alcorn were dinner guests in the home

of Mr. and Mrs. S. W. Downs Wednesday. Mrs. A. L. Galloway attended the Cotton States Fashion Exhibitors at the Hotel Peabody in Memphis over the weekend. She was there buying Spring and Summer merchandise for the Jan-Lynn Shoppe.

Mrs. Pat Fugitt, Mrs. Helen Winfield, Mrs. Billie Hare, Mrs. Edna Wright, Mrs. Doris Hare, Mrs. Ouida Cartwright and Faith, Mrs. Kitty Harber, Mrs. Eileen Hare and Mrs. Mary Wingo all had dinner with Mrs. Lucie Jones last Thursday.

day in honor of Mrs. Hare, who was entering the hospital in Memphis Friday. Mr. and Mrs. Bardie Cole, Mr. and Mrs. Cephas Jones and Mr. and Mrs. R. B. Carpenter visited Mrs. Eileen Hare and Little Davie Cartwright at the Baptist Hospital Sunday.

Among those attending services for J. Roger Stanley last Thursday were: Mr. and Mrs. Cullen Curloe of Rienzi, Mr. and Mrs. Wright Patton of St. Petersburg, Fla., Mr. Mount Searles of Philadelphia, Pa., Mrs. Walter King, Miss Martha Greene, Mr. and Mrs. John Stanley of Corinth, Mr. and Mrs. Jess Cauthen of Shannon, Mr. and Mrs. Paul Mize and Mrs. Paul Gibbs of Fulton, Miss.

Mrs. Pat Fugitt and Mrs. Lucille Phillips visited Mrs. Eileen Hare and Davie Cartwright in Memphis Monday at the Baptist Hospital.

Mr. and Mrs. Ralph Hare visited Mrs. Eileen Hare and Davie Cartwright in the Baptist Hospital Monday evening.

Mrs. J. S. Mason has returned from West Point after spending the holidays with Mr. and Mrs. Gordon Mason and family.

Representative from the Peoples Bank and Trust Company who attended the NABAC Meeting in Pontotoc Tuesday evening were: M. W. Smith, Kenneth Founds, Mrs. Toy Smith, Miss Ann Rutherford, Mrs. Bobbie J. Johnson, Miss Mary



THRASHER HOMECOMING COURT—Thrasher Homecoming will be held Saturday night, January 15 in the high school gym beginning at 7 p.m. Thrasher's basketball team will be playing Pine Grove. Pictured left to right are: Dianne Thompson, representing the Senior Class; Dell Lauderdale, Sophomore Maid; Helen McCaughey, Freshman Maid; Peggy McVey, Junior Maid and Carol Doss, representing the Senior Class. The Queen, who will be chosen between Carol Doss and Dianne Thompson, will be announced at the half-time. The other girl will serve as the Senior Maid.

Hospital Notes

List of discharges from Northeast Miss. Hospital, January 4, 1966 through January 11, 1966:

- Johnson, Lisa Dale; Nix, A. C.; Williams, Edna Willie; Newcomb, Leslie Lee; Cunningham, Elton; Lambert, Tommie; Michael, Charles Larry; McGee, Sara Ann; Bingham, Wm. Marion; Duncan, Lawrence; Willis, Eulas Ray; Green, Martha & Baby; Jones, Oma; Basden, Billy; Knight, Linda; Shook, Carolyn; Christian, Martha Ann; Barron, Cratus Lee; Wilemon, Maggie; Walden, Leland; Eaton, Fred; Cox, Annie Maurine; Livingston, Ronnie.
- Walker, Vadie; Hall, Marilyn Jean; Wooren, Jammie; Lee, Janice; Nicholson, Effie; Crow, Alma; Stevens, June; Russell, Brenda Kay; Gistm, Wm. Thomas; Olive, Patsy & Baby; Beard, Carolyn & Baby; Rambeau, Print; Burcham, Major; Corbin, George; Agnew, Dorothy; Thornton, T. J.; Hatfield, Evelyn; Jones, Lorene & Baby; Dodds, Bobbie Jean; James, Larry; Brasel, Mildred, Marie; Smith, Jo Ann; Thornton, Earleen Audrey.
- Turner, Kate; Stormont, H. C.; Hughes, Hoyle Wayne; Jones, Harmie; Stephens, Jacqueline; Jones, Clara Sue; Smith, Eather; Rhoades, Larry; Fox, Edgar; Ashcraft, Lerran; Hall, Christopher; Huddleston, Zandria & Baby; Ford, Minnie; Inman, Carolyn; Berryhill, Lela; Mann, Alma; Downey, Mildred.

Franklin Roosevelt attended Groton School for Boys in Massachusetts.

ANNOUNCING DEALERSHIP FOR TAPPAN GAS APPLIANCES

If you are interested in a gas stove, gas water heater or gas heater of any kind, come to Brown Plumbing & Electrical Supply Co.

If you are NEW USERS of gas, you will receive a 20% discount on your purchase.

BROWN Plumbing & Electrical Supply Co.

ONE WEEK ONLY Annual SALE Hanes

Seamless Nylon Stockings

Saturday, January 15 thru Saturday, Jan. 22

Colors on Sale: South Pacific, Barely There and Town Taupe.

	Regular Price	Sale Price:	
		1 Pair	6 Pairs
415 reinforced sheer	\$1.50	\$1.25	\$7.50
210 Cantrece run-guard	\$1.65	\$1.35	\$8.10
215 Cantrece sheerloc	\$1.95	\$1.65	\$9.90

Patrick's

WE GIVE MISS DIXIE BELLE STAMPS

ATTENTION

Kraft Foods Patrons: We have made arrangements to have a load of Choice Northern Heifers Heavy Springers, that will be located at the 4-H Dairy Barn adjoining the Booneville City Park SATURDAY, JANUARY 15 ONE DAY ONLY

Come prepared to select one or more of these heifers for your herd.

Financing can be arranged.

Kraft Foods

Booneville, Miss. Phone 728-5822

State Bank No. 85-583

REPORT OF CONDITION OF PRENTISS COUNTY HOME BANK OF BOONEVILLE IN THE STATE OF MISSISSIPPI AT THE CLOSE OF BUSINESS ON DECEMBER 31, 1965.

ASSETS

1. Cash, balances with other banks, and cash items in process of collection	\$ 936,482.09
2. United States Government obligations, direct and guaranteed	565,221.00
3. Obligations of States and political subdivisions	457,397.37
5. Other securities (including \$. None.. corporate stocks)	276,750.00
7. Other loans and discounts	2,782,576.62
8. Bank premises, furniture and fixtures, and other assets representing bank premises	11,229.62
9. Real estate owned other than bank premises	59,266.67
11. Other assets	6,912.86
12. TOTAL ASSETS	\$5,095,836.23

LIABILITIES

13. Demand deposits of individuals, partnerships, and corporations	\$1,789,942.99
14. Time and savings deposits of individuals, partnerships, and corporations	1,708,658.27
15. Deposits of United States Government	217,193.00
16. Deposits of States and political subdivisions	647,068.22
18. Deposits of commercial banks	18,680.82
19. Certified and officers' checks, etc.	62,685.03
20. TOTAL DEPOSITS	\$4,444,228.35
(a) Total demand deposits	\$2,935,570.08
(b) Total time and savings deposits	\$1,708,658.27
21. Federal funds purchased	200,000.00
24. Other liabilities (including \$. None.. mortgages and other liens on bank premises and other real estate	63,852.05
25. TOTAL LIABILITIES	\$4,708,080.40

CAPITAL ACCOUNTS

26. (c) Common stock—total par value	\$ 100,000.00
No. shares authorized 20,000	
No. shares outstanding 20,000	
27. Surplus	250,000.00
28. Undivided profits	1,154.48
29. Reserve for contingencies and other capital reserves	36,601.35
30. TOTAL CAPITAL ACCOUNTS	387,755.83
31. TOTAL LIABILITIES AND CAPITAL ACCOUNTS	\$5,095,836.23

MEMORANDA

- Average of total deposits for the 15 calendar days ending with call date \$98,651.94
- Average of total loans for the 15 calendar days ending with call date 12,019.51

I, Wallace Poole, President, of the above-named bank, do solemnly affirm that this report of condition is true and correct, to the best of my knowledge and belief.

Correct—Attest: Wallace Poole
Paul Dobbins, E. O. Roden, Henry Mize, Luther C. Moore, James M. Tigrett, Jim S. Alexander, J. W. Smith, Jr., C. W. Yarber Directors

(SEAL)
State of Mississippi, County of Prentiss, ss:
Sworn to and subscribed before me this 11th day of January, 1966, and I hereby certify that I am not an officer or director of this bank.
Vernell Arnold, Notary Public
My commission expires March 4, 1968.

BOB GRISHAM'S Dixie Dandy FOOD STORES

TWO LOCATIONS "NOW" WITH THE SAME LOW PRICES PLUS MISS DIXIE BELLE GIFT STAMPS

at Monroe St. Store at Highway 45 Store

With \$5.00 Purchase — \$10.00 for Crisco and Stamps

CRISCO	3 lbs. 49c
Fryers Good, Fresh	lb. 28c
Chicken Livers	lb. 79c
Bologna Sou. Belle All Meat	lb. 47c
Sausage Sou. Belle Dixie	3 LBS \$1.00
Rayon Mops	Each 79c
Lux Liquid Reg. 69c	Only 61c
Cocoa Hershey's	1/2 lb. 33c
Sugar 10X Powdered lb. boxes	2 FOR 37c
Salt Carey's lb. boxes	2 FOR 19c
Kotex Regular	39c
Napkins Softex	2 boxes 23c
Ice Milk Borden's	1/2 Gal. 49c

With \$5.00 Purchase — \$10.00 for Crisco and Stamps

100 FREE Miss Dixie Belle Gift Stamps

Mrs. Clarence Chase Presented Interesting Program At DAR Meeting Thursday

The Natchez Trace Chapter, Daughters of the American Revolution, met Thursday afternoon at the Town Motel with Miss Bess Bartlett, Mrs. Jim Ward, Mrs. Milton Waters, and Mrs. J. B. Wheeler, hostesses.

After the opening with the New Year Prayer, offered by the Chaplain, Mrs. J. W. Abernethy, Mrs. Paul Dobbins, regent, led the ritual and conducted the business at which time reports were given by the Conservation Chairman, Mrs. Jim Scott.

Mrs. Frank Milton, Chairman of DAR Schools, reported on activities in behalf of Kate Duncan Smith, Tamasee, Crossnore Schools and the Economics project at St. Mary's School.

Copies of the history of Rosalie, DAR Shrine, were presented to the school and Public Libraries.

Before the program, a delicious dessert plate with coffee was served by the hostesses.

Mrs. Lewis Earl Perry, Chairman of National Defense, directed the program on "Broadening One's Horizon" with "A Brief Sketch of World Conditions." In an exhaustive discussion after extensive research, Mrs. Clarence Chase gave a scholarly summary of world affairs and changing patterns of life here and abroad. The cause of the complexity and confusion of the world affairs, she said, is due to the rapid changes in every phase of life.

Before achieving global understanding one must analyze the changing patterns of life in the economic, social, political and ed-

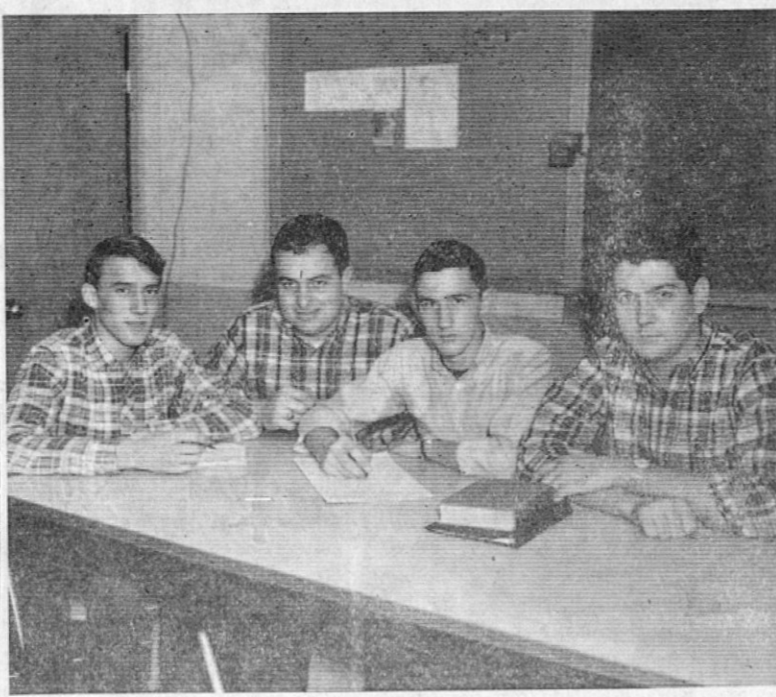
ucational fields of neighboring countries abroad. These changes have caused the opposing forces of Communism and Democracy. Mrs. Chase not only presented these changes, but the inevitable problems that resulted, as, overpopulation, illiteracy, poor mental health, and maladjusted government.

During the struggle for power, nations test their advantages. Mrs. Chase presented a study of the economic history of the Soviet Union, which began with the release of the Russian people from the Czarist reign, led by Lenin and Stalin into Communism.

The idea of peaceful co-existence with undertones of psychological warfare was introduced by Khrushchev. As a result of Russia's new policy, the Communist economic structure has changed, after which she presented a picture of the Russia that is striving for world domination.

Mrs. Chase in conclusion said, in part, "As horizons widen, the overlapping of nations beliefs, and races causes new problems and in order to survive America must prepare herself." The speaker outlined the attitude Americans need to adopt. Citizens must honestly face the challenge of Russia. Self-preservation forces Americans to analyze conditions and world events, and not be swayed by propaganda. Each citizen will have to repel the challenge of Russia, Mrs. Chase affirmed.

When fall comes the blue-winged duck is among the first to head south.



OFFICERS for the Industrial Arts Club at Northeast Mississippi Junior College are left to right, Jimmy Malone, Baldwin, Secretary-Treasurer; Norbert Coleman, Kossuth, Vice-President; Jimmy Swan, New Albany, President and Paul Nichols, Iuka, Reporter. Mr. Houston Richey is the sponsor for the group.

Mrs. Aurora Cox Dies In Calif.

Mrs. Aurora Googe Cox, died in Santa Monica, Calif. on Friday, January 7th.

Mrs. Cox was the daughter of the late Mr. and Mrs. J. D. Googe, a family who were long prominent in the civic, church, social and official life of the county for many years. Mr. Googe served two terms as Sheriff of Prentiss County. The family moved from Marietta to Booneville during Mr. Googe's first term of office.

Mrs. Cox was married to the late Dr. W. M. B. Cox on April 23, 1912. Before her marriage, Mrs. Cox served as postmistress at Marietta. She was a zealous member of the Church of Christ.

A woman of cordial, gracious manner, she held a secure place of affectionate regard in her community because of her pre-eminent abilities, which were reflected in the recognition of her attainments. Continuing in her duties the fine traditions so long associated with her family name, she fulfilled efficiently with complete dedication her duties and the attending responsibilities, and in her home, church, and community life, she faithfully discharged every obligation of her life, earning many qualities of character and personality. The standards of her business career carried over profitably in her personal life.

Services were held at Rainbow Chapel with burial in Rose Hills Memorial Park in Alhambra, California.

She leaves two step-daughters, Miss Vivian Cox of Santa Monica and Mrs. Ed Riley of Bay City, Idaho; four sisters, Mrs. J. R. Thomas of Booneville, Mrs. Mittie Norman of Midland, Texas, Mrs. Mary Smith of Jackson, Miss., and Mrs. Marie Stuart of Baton Rouge, La.; two brothers, Dr. Turner Googe of Marshall, Texas, and Dr. Paul R. Googe of Charleston, Miss.

C. C. Bullard Honored With A Surprise Birthday Dinner

Clinton C. Bullard was honored on his 77th birthday Sunday, January 9, with a surprise dinner at his home.

Those present were Mr. and Mrs. Roy Setliff and Tex of Winfield, Ala., Mrs. Arnie Howell and Donna of Fayette, Ala., Mr. and Mrs. C. A. Bullard of Jackson, Mr. and Mrs. L. F. Bullard, Mr. and Mrs. George Bullard and Wanda, Mr. and Mrs. C. R. Bullard of Burnsville, Mr. and Mrs. Billy Smith, Mr. and Mrs. Roy Lowrey and family, Mrs. Inez Ford, Mrs.

Services For Print Rambo Held Sunday

Print Rambo of Booneville, retired section foreman for the G. M. & O. Railroad, died Friday night at the Northeast Mississippi Hospital following an illness of eighteen months. He was a member of the First Baptist Church and 75 years of age.

Funeral services were conducted Sunday at 2 p.m. at the First Baptist Church with Bro. Billy Roby officiating. Burial was in the Booneville Cemetery with McMillan Funeral Directors in charge.

He leaves his wife, Mrs. Bessie Lee Rambo; a son, John L. Rambo of the U. S. Army in Germany; a brother, Neil Rambo of Columbus, Ky. and one grandchild. Mr. and Mrs. Jim Galloway, Mrs. Byron Mathis and Mrs. Barney Williams of Bardwell, Ky., were among those from out-of-town attending the services.

Julian Patrick To Appear In Memphis With Metropolitan

From Connie Richards column in the TV Section of Sunday's Commercial it is read with more than passing interest that Julian Patrick, son of Mr. and Mrs. Julian Patrick of Meridian and nephew of Mrs. W. W. Cunningham, Mrs. Frank Milton and Dr. Bernard Patrick is traveling with the Metropolitan Opera Company, on the road to perform for America, with a repertory of four operas, they will present two of them in Memphis this month.

For the Mid-South, they offer "Carmen", January 26, and "Cinderella" on January 27, in the Auditorium Music Hall. It is predicted the size of the audience will be significant, for in a way, this company is putting to test a nation that does a lot of talking about its cultural exposition. In the National Company the art comes first and what it means in the way of artistic security cannot be underestimated.

According to critics, "Cinderella" has been a tremendous hit on tour. Chicago's Claudia Cassidy, a critic not easily pleased, reviewed, "Cinderella" and said in part, "If the Metropolitan Opera National Company's 'Cinderella' is a fair sample of its wares, it is worth having around." It is gayly staged by Geunther Rennert in a fairytale-with-a-smile-settings, and sung with style, charm, and indispensable Rossini bubble. It has a stage-

Margarette Box and sons, and Mr. and Mrs. John W. Lambert and family.

ful of good people, and a wonderful freshness of spirit." The critic tells happily about the humor, the sparkle of color and the warmth of the production. That is the kind of reviews this company has been getting.

The object of the evening is to enjoy opera, and from all reports, they will. The company's standards have been absolutely first class and they have left happy audiences throughout the country so far on their tour.

Booneville opera lovers will find a great deal of interest in the production due mainly to Mr. Patrick's appearance and no doubt many from this area will see "Cinderella."

Tickets are on sale at the Arts Appreciation box office, 64 West Court, Memphis, Tennessee.

Luxembourg, long a neutral country, abandoned the policy to become a member of the North Atlantic Treaty Organization.

Pearl Caldwell Circle Meets In Maxwell Home Monday

The Pearl Caldwell Circle of the First Baptist Church met January 10 with Mrs. Grace Maxwell. Mrs. Maxwell opened the meeting by asking Mrs. J. S. Mason to lead in prayer for the bereaved of our church in town.

Mrs. Tony Blythe had charge of the devotional and called the names of the foreign missionaries, a and then led in prayer for them.

Minutes were read and approved.



"Education is not 'received'. It is achieved!"

Reports were given by Mrs. N. W. Maxwell closed the meeting with prayer. A delicious plate of toasted pecans, cookies, candy and hot coffee was served by Mrs. Maxwell, who was assisted by Mrs. Ethel Hanley.

WE MAKE KEYS

Bring your old key in and let us make extra keys for you on our

NEW KEY MACHINE

BOONEVILLE HARDWARE CO.

Shop and Save With MISS DIXIE BELLE STAMPS

GIVEN AT:

- Dixie Dandy No. 1
- Dixie Dandy No. 2
- Moore's Men's Store
- White Auto Store
- White Auto Service Center
- D-X Service Station
- Ted Burns Gro. - Altitude
- Lambert Groc. & Ser. Sta.
- Morgan Shoe Store
- Pate's TV and Appliance
- Prentiss Hardware, Inc.
- Patrick Dress Shop
- Hoard Bros. Ref. Service
- A. E. McCoy Gro. - Wheeler
- Stacy Shell Sta. - Rienzi
- Perry's Food Center - Rienzi

Moore's Men's Store

SHOES FOR MEN AND BOYS

Don't Just Stand There! Go To

WE GIVE MISS DIXIE BELLE STAMPS

LIBERTY

ALWAYS BUY THE BEST FOR LESS

PLUS UNITED STAMPS

With \$5.00 Purchase or More
Drinks 2 Cartons 9c
All Kinds - Plus Deposit

With \$5.00 Purchase or More
OLEO SOLID 2 LB. 9c
\$10.00 Purchase for Drinks and Oleo

Cream Pies Morton 4 For \$100

Peaches Miss Georgia 4 Cans 95c

Gerbers Strained
BABY FOODS 3 Jars 29c

SCHOOL DAY
PEAS 2 Cans 29c

FLAVOR-KIST
Crackers LB. Box 29c

CONTADINO TOMATO
SAUCE 12 oz. Can 10c

AJAX WINDOW
Cleaner Bottle 15c

SUGAR 5 Lb. Bag 55c 10 Lb. Bag \$1.07

Sunshine
DOG FOOD 25-lb. bag \$1.79

ICE MILK Midwest 1/2 Gal. 49c

FLOUR Royal 25-lb. bag \$1.89

U. S. CHOICE
ROUND STEAK Lb. 69c

Smoked
PICNIC HAMS Lb. 49c

OLE MISS
Bacon Lb. 59c

TOM
Turkeys Lb. 29c

KREY'S PURE
Sausage 2 Lb. Sticks 99c

ALL MEAT
Bologna Lb. 49c

CHICKEN BACKS Lb. 10c

LEMONS, dozen 29c

CABBAGE, lb. 6c

CARROTS, cello bag 10c

RUTABAGAS, lb. 6c

'Instant Information' On Antidotes From State's Poison Control Centers

STATE COLLEGE, Miss. — In case you or your children are accidentally poisoned it's no accident that your doctor can dial a telephone and get the antidote on any one of 40,000 different commercial products.

This "instant information" is available 24 hours a day to the health profession in Mississippi as the result of work done primarily by Dr. C. W. Hartman, dean of the School of Pharmacy at the University of Mississippi and the Mississippi State Board of Health.

Rites For Mrs. Polly Orff Held Monday

Funeral services for Mrs. Polly Orff of Route 3, Booneville, were conducted Monday at 2 p.m. at Gaston Baptist Church with Bro. Huey Wood officiating. Burial was in the adjoining cemetery with McMillan Funeral Directors in charge.

Mrs. Orff died at her home Saturday morning following an illness of several years. She was a member of the Baptist Church, clerk at Sadies 5 & 10 and was 54 years of age.

She leaves her mother, Mrs. Minnie Seal of Booneville; a son, U. E. Orff of Kenosha, Wis.; two daughters, Mrs. Hollis Garner of Booneville and Mrs. C. C. Cook of Corinth; four brothers, Floyde Miles of Baldwin, Archie and Roy Miles of Booneville, and Walter Miles of Union Pier, Michigan; and two grandsons.

NOTICE OF TRUSTEE'S SALE
WHEREAS, on March 24, 1964, William M. Jackson and wife, Marylon Jackson executed and delivered to me as trustee a deed of trust conveying to me certain lands in Prentiss County, Mississippi, in trust to secure a certain indebtedness therein mentioned owing to Fidelity Federal Savings and Loan Association of Corinth, Corinth, Mississippi, Beneficiary, said deed of trust being recorded in the Chancery Clerk's office of said county in Land Deed Records thereof in Trust Deed Book 71 at pages 462-465; and

WHEREAS, default has been made in the payment of said indebtedness, the entire balance due thereon is now past due and unpaid, said default, continues and the provisions of said deed of trust have been broken, and the said Fidelity Federal Savings and Loan Association of Corinth, Trustee, has requested the undersigned Trustee to foreclose said deed of trust as authorized therein.

NOW, THEREFORE, I will on February 3, 1966, within legal hours for such sales, at the west front door of the Prentiss County Courthouse in Booneville, Prentiss County, Mississippi, offer for sale and sell at public auction for cash to the highest and best bidder the land described as follows:

Situated in the Second District, County of Prentiss, State of Mississippi, to-wit:

Part of the West Half of the Southeast Quarter of Section 20, Township 4, Range 6, described as follows:
Beginning at the northeast corner of the said West Half of said quarter and run south with the east boundary of the said West Half of said quarter 680 feet to a point in the center of the Eaton Public Road; thence with the center of said road as follows: North 85 degrees west 200 feet; north 70 degrees west 548 feet; north 65 degrees west 100 feet; thence north 25 degrees east 20 feet to a point in the north right of way of said road for the true point of beginning; thence run north 25 degrees east 210 feet; thence north 65 degrees west 105 feet; thence south 25 degrees west 210 feet to the north right of way of said road; thence south 65 degrees east with said north right of way of said road 105 feet to the true point of beginning, containing one-half acre more or less.

The title to said land is believed to be good, but I will sell and convey only such title as is vested in me as Trustee aforesaid.

WITNESS my signature on this 13th day of January, 1966,
ORMA R. SMITH, JR.,
TRUSTEE

ADVERTISEMENT FOR BIDS

Sealed bids for sanctuary and educational building for the First Baptist Church, Booneville, Miss., will be received at the First Baptist Church, Booneville, Miss., until 2 p.m. Central Standard Time on January 27, 1966 at which time they will be publicly opened and read aloud.

Contract documents may be examined at the office of Raymond Martin and Associates, Architects, 3294 Poplar Ave., Memphis.

The owner reserves the right to reject any and all informalities in bidding.

Bidders are required to furnish satisfactory security (5% bid bond) with the proposal and to furnish satisfactory performance and payment bond upon acceptance of the bid for 100% contract sum. The bidder's General Contractor Registration Certificate Number for the State of Mississippi shall appear on the outside of the sealed bid.

No bid may be withdrawn for a period of 30 days after the opening thereof without consent of the owner.

Building Committee
First Baptist Church
Booneville, Miss. 42-1tc

'Weed Crop' May Be Worth Millions A Year In Mississippi

UNIVERSITY, Miss. — The University of Mississippi's Research Institute of Pharmaceutical Sciences got its first taste of success this week as Ole Miss scientists announced the beginning of a pilot project to plant a "weed crop" they expect to be worth several million dollars annually to Mississippi by 1975.

The "weed" is sumac, a shrub which grows abundantly in the Mid-South. Through the efforts of Dr. Norman J. Doorenbos, UM professor of Pharmaceutical Chemistry and a nationally known research scientist, sumac leaves have been recognized as potentially the most useful domestic source of a vital chemical called tannin.

At present, the United States imports almost all of its tannin from the Near East, Sicily and Peru. But guerrilla activities, general economic and governmental instability in regions supplying depots nut galls, terra beans and Sicilian sumac, all of which are major sources of the kind of tannin which will be obtained from Mississippi sumac, have caused American users of the chemical to seriously consider new domestic suppliers.

Dr. Hartman, "a chemical which will be worth several million dollars annually to Mississippi by 1975." Under these circumstances, keeping an accurate file is a complex business. Each card also contains the symptoms and the antidote. "The symptoms will sometimes tell us what the product is even when we are not sure," says Dr. Hartman. "But in any case, always bring the container with you to the doctor who is treating the case," he added. Information on the label is an aid and may save valuable time in determining exactly what should be done.

'Weed Crop' May Be Worth Millions A Year In Mississippi

UNIVERSITY, Miss. — The University of Mississippi's Research Institute of Pharmaceutical Sciences got its first taste of success this week as Ole Miss scientists announced the beginning of a pilot project to plant a "weed crop" they expect to be worth several million dollars annually to Mississippi by 1975.

The "weed" is sumac, a shrub which grows abundantly in the Mid-South. Through the efforts of Dr. Norman J. Doorenbos, UM professor of Pharmaceutical Chemistry and a nationally known research scientist, sumac leaves have been recognized as potentially the most useful domestic source of a vital chemical called tannin.

At present, the United States imports almost all of its tannin from the Near East, Sicily and Peru. But guerrilla activities, general economic and governmental instability in regions supplying depots nut galls, terra beans and Sicilian sumac, all of which are major sources of the kind of tannin which will be obtained from Mississippi sumac, have caused American users of the chemical to seriously consider new domestic suppliers.

Dr. Hartman, "a chemical which will be worth several million dollars annually to Mississippi by 1975." Under these circumstances, keeping an accurate file is a complex business. Each card also contains the symptoms and the antidote. "The symptoms will sometimes tell us what the product is even when we are not sure," says Dr. Hartman. "But in any case, always bring the container with you to the doctor who is treating the case," he added. Information on the label is an aid and may save valuable time in determining exactly what should be done.

'Weed Crop' May Be Worth Millions A Year In Mississippi

UNIVERSITY, Miss. — The University of Mississippi's Research Institute of Pharmaceutical Sciences got its first taste of success this week as Ole Miss scientists announced the beginning of a pilot project to plant a "weed crop" they expect to be worth several million dollars annually to Mississippi by 1975.

The "weed" is sumac, a shrub which grows abundantly in the Mid-South. Through the efforts of Dr. Norman J. Doorenbos, UM professor of Pharmaceutical Chemistry and a nationally known research scientist, sumac leaves have been recognized as potentially the most useful domestic source of a vital chemical called tannin.

At present, the United States imports almost all of its tannin from the Near East, Sicily and Peru. But guerrilla activities, general economic and governmental instability in regions supplying depots nut galls, terra beans and Sicilian sumac, all of which are major sources of the kind of tannin which will be obtained from Mississippi sumac, have caused American users of the chemical to seriously consider new domestic suppliers.

Dr. Hartman, "a chemical which will be worth several million dollars annually to Mississippi by 1975." Under these circumstances, keeping an accurate file is a complex business. Each card also contains the symptoms and the antidote. "The symptoms will sometimes tell us what the product is even when we are not sure," says Dr. Hartman. "But in any case, always bring the container with you to the doctor who is treating the case," he added. Information on the label is an aid and may save valuable time in determining exactly what should be done.

'Weed Crop' May Be Worth Millions A Year In Mississippi

UNIVERSITY, Miss. — The University of Mississippi's Research Institute of Pharmaceutical Sciences got its first taste of success this week as Ole Miss scientists announced the beginning of a pilot project to plant a "weed crop" they expect to be worth several million dollars annually to Mississippi by 1975.

The "weed" is sumac, a shrub which grows abundantly in the Mid-South. Through the efforts of Dr. Norman J. Doorenbos, UM professor of Pharmaceutical Chemistry and a nationally known research scientist, sumac leaves have been recognized as potentially the most useful domestic source of a vital chemical called tannin.

At present, the United States imports almost all of its tannin from the Near East, Sicily and Peru. But guerrilla activities, general economic and governmental instability in regions supplying depots nut galls, terra beans and Sicilian sumac, all of which are major sources of the kind of tannin which will be obtained from Mississippi sumac, have caused American users of the chemical to seriously consider new domestic suppliers.

Dr. Hartman, "a chemical which will be worth several million dollars annually to Mississippi by 1975." Under these circumstances, keeping an accurate file is a complex business. Each card also contains the symptoms and the antidote. "The symptoms will sometimes tell us what the product is even when we are not sure," says Dr. Hartman. "But in any case, always bring the container with you to the doctor who is treating the case," he added. Information on the label is an aid and may save valuable time in determining exactly what should be done.

'Weed Crop' May Be Worth Millions A Year In Mississippi

UNIVERSITY, Miss. — The University of Mississippi's Research Institute of Pharmaceutical Sciences got its first taste of success this week as Ole Miss scientists announced the beginning of a pilot project to plant a "weed crop" they expect to be worth several million dollars annually to Mississippi by 1975.

The "weed" is sumac, a shrub which grows abundantly in the Mid-South. Through the efforts of Dr. Norman J. Doorenbos, UM professor of Pharmaceutical Chemistry and a nationally known research scientist, sumac leaves have been recognized as potentially the most useful domestic source of a vital chemical called tannin.

At present, the United States imports almost all of its tannin from the Near East, Sicily and Peru. But guerrilla activities, general economic and governmental instability in regions supplying depots nut galls, terra beans and Sicilian sumac, all of which are major sources of the kind of tannin which will be obtained from Mississippi sumac, have caused American users of the chemical to seriously consider new domestic suppliers.

Dr. Hartman, "a chemical which will be worth several million dollars annually to Mississippi by 1975." Under these circumstances, keeping an accurate file is a complex business. Each card also contains the symptoms and the antidote. "The symptoms will sometimes tell us what the product is even when we are not sure," says Dr. Hartman. "But in any case, always bring the container with you to the doctor who is treating the case," he added. Information on the label is an aid and may save valuable time in determining exactly what should be done.

'Weed Crop' May Be Worth Millions A Year In Mississippi

UNIVERSITY, Miss. — The University of Mississippi's Research Institute of Pharmaceutical Sciences got its first taste of success this week as Ole Miss scientists announced the beginning of a pilot project to plant a "weed crop" they expect to be worth several million dollars annually to Mississippi by 1975.

The "weed" is sumac, a shrub which grows abundantly in the Mid-South. Through the efforts of Dr. Norman J. Doorenbos, UM professor of Pharmaceutical Chemistry and a nationally known research scientist, sumac leaves have been recognized as potentially the most useful domestic source of a vital chemical called tannin.

At present, the United States imports almost all of its tannin from the Near East, Sicily and Peru. But guerrilla activities, general economic and governmental instability in regions supplying depots nut galls, terra beans and Sicilian sumac, all of which are major sources of the kind of tannin which will be obtained from Mississippi sumac, have caused American users of the chemical to seriously consider new domestic suppliers.

Dr. Hartman, "a chemical which will be worth several million dollars annually to Mississippi by 1975." Under these circumstances, keeping an accurate file is a complex business. Each card also contains the symptoms and the antidote. "The symptoms will sometimes tell us what the product is even when we are not sure," says Dr. Hartman. "But in any case, always bring the container with you to the doctor who is treating the case," he added. Information on the label is an aid and may save valuable time in determining exactly what should be done.

FACTORY TRAINED MECHANICS

MILTON MOTOR CO.

18-1tc

SAVE AND GROW WITH US

4% Dividends on Pass Book Deposit
Deposits by 10th Earn from First

5% Dividend on 1 Year Time Certificate

NORTH MISSISSIPPI SAVINGS & LOAN ASSOCIATION

CORNER FRONT & CHURCH STREETS BOONEVILLE PHONE 728-6241 to 3-31-66

Sunflower famous for "CERTIFIED SPECIALS"

NOW BRINGS YOU... **RED CARPET SERVICE**

Go... first class shop Sunflower

"It Costs No More"

Red Carpet Service MEANS

- ACCURATE CHECKOUT
- FAST CHECKOUT
- BETTER BAGGING
- FRIENDLY ATTENTION
- WIDER SELECTION
- EASIER SHOPPING

- Stokely Yellow Cling Peaches Halves-Slices 3 No. 2 1/2 cans 89c
- Banquet Frozen Fruit Pies 3 20-oz. size \$1.00
- Mother's Best FLOUR 10-lb. bag 99c
- FOX DELUXE Large 22-Oz. Size PIZZAS 89c
- SALLY'S PATTIES OLE PLANTATION 8-OZ. SIZE OLEO 10 8-oz. size \$1.00 Biscuits 10 8oz. size 79c

Center Cut **Pork Chops** lb. 79c

Sunflower FOOD STORES

HIGHEST QUALITY, LOWEST PRICES, NAME BRANDS

Prices Good Through Jan. 15th

FRYERS whole lb. 27c

Country Style Ribs, lb. 69c
1/4 Pork Loin Chops, lb. 69c

REGULAR 99c SIZE **LISTERINE** 69c Big 14-oz. Bottle

- SOFTEX Napkins, 70-ct. pkg. 10c
- STOKELY TOMATO Juice 2 46-oz. cans 69c

Snowdrift 3-lb. Can 39c

"Certified Special" With Coupon & \$5.00 Purch.

YOU GET DOUBLE S & H STAMPS ALL DAY EVERY WEDNESDAY — AT — SUNFLOWER FILLS YOUR BOOK TWICE AS FAST - SHOP SUNFLOWER AND SAVE!

U. S. No. 1 **RED POTATOES** "Certified Special" 20-lb. bag 89c

Tasty Yellow Onions 3-lb. bag 25c

Bonus EXTRA COUPON

With Coupon and \$5.00 Purchase Excludes Tobacco

SNOWDRIFT 3-lb. Can - 39c - Limit 1 - Exp. Jan. 15

FREE S & H STAMPS with Your Purchases

WIN free CASH \$100.00

JACKPOT DAY

Mrs. W. A. Jackson, Sr. \$300 Winner

GET YOUR JACKPOT DAY CARD PUNCHED FREE THIS WEEK

In other birds' nests, it leaves raising to others.

Prentiss ASCS County News

By CHARLES E. CALVERT, Office Manager

Feed Grain Program Similar To Last Year's

Farmers in Mississippi who plan to take part in the 1966 feed grain program will find that sign-up procedure and general program requirements this year are similar to those followed for last year's feed grain program.

For example, the first step in taking part in the program is to fill out an intention-to-participate form and leave it with the ASCS county office. This can be done at any time during the sign-up period, which runs from January 31, 1966 through April 1, in Mississippi.

After a producer has signed up, he is responsible for (1) diverting acreage from corn, grain, and/or

barley to the extent he has agreed upon; (2) designating the acreage of land to be diverted and establishing approved conservation use on the land; (3) maintaining the conserving base acreage on his farm; and (4) not exceeding the feed grain base on any other farm in which he has an interest.

Farmers who request it will be eligible to receive 50 per cent of any diversion payment they may expect to earn under the 1966 program at the time they sign up.

Cotton Growers Choices
Cotton growers with allotments of more than 10 acres have several choices when they sign up to take part in the 1966 cotton program. Those with allotments of 10 acres

or less (or 3,600 pounds, when projected yield is multiplied by the number of allotted acres) have additional choices, and full information is available at the local ASCS office.

Each grower should sign up in the cotton program and thus indicate his choice for 1966. The sign-up period begins on January 31, 1966, and closes on April 1, 1966.

For the above-10-acre allotment holders, there are these options:

1. The full allotment may be planted, with no diversion payment, no price support payment, and the cotton produced is not eligible for loan.

4. He may wish to participate in the cropland adjustment program and divert his cotton allotment under that program. (Full information is available at the ASCS county office.)

Cropland Adjustment Rates Announced
Adjustment payment rates for croplands diverted under the cropland adjustment program have been announced by Willie Hatfield, who is Chairman of the Prentiss Agricultural Stabilization and Conservation County Committee.

Payment rates will be related to the value of crops previously grown and productivity on acreages put into the CAP program, the chairman said when announcing the rates.

The chairman also reminded that other cropland on a farm to be included in a CAP agreement will be eligible for adjustment payment rates, varying from \$3.00 to \$5.00 an acre, depending on the productivity of the cropland. Agreements will cover five to ten years.

Commodity Price Support Application Dates Listed
The final dates for filing price support applications and loan maturity dates have been brought closer together to give farmers more time in which to make judgments on the disposal of their crops.

In several instances during prior years there has been a space of

several months between final availability dates for loans and the loan maturity date.

Producers of price supported commodities now will be able to secure price support coverage through loans or purchases on eligible quantities at any time between harvest and about 1 month before the loan maturity dates.

The new schedule of final dates to apply for price support and loan maturity dates is as follows (all dates are in 1966):
Corn—June 30-July 31.
Oats—January 31-February 28.
Peanuts—April 30-May 31.
Grain sorghum—February 28-March 31.
Soybeans—June 30-July 31.
Wheat—January 31-February 28.

Lucy Smith Circle Meets With Mrs. Rosa Grisham
The Lucy Smith Circle of the WMU, First Baptist Church met in the home of Mrs. Rosa Grisham Monday afternoon, January 10, with eleven members and four visitors present.

After the business meeting conducted by Mrs. Ercell Green Mrs. J. A. Bolton gave the devotional reading from Psalms 104:1-25, closing with prayer for the foreign missionaries.

Mrs. Mary Davis, circle chairman, conducted the program. Those taking part on the program were Mrs. Davis, Mrs. W. H. Robertson, Mrs. Bolton, and Miss Ann McClamroch.

Graveside Services For Thomas Infant
Graveside services for Tina Daphen Thomas, infant daughter of Mr. and Mrs. Aaron Thomas of Rt. 5, Booneville were conducted Wednesday at 2 p.m. at Fairview Cemetery with Rev. T. L. Porcher officiating.

She passed away at 8 a.m. Monday.

Singing At New Bethel Sunday
There will be a singing Sunday afternoon, January 16 at the New Bethel Baptist Church beginning at 1 p.m. The public is cordially invited to attend.



Where You're Always AMONG FRIENDS!

- | | | | | | | | | |
|---|--|---|--|---|---|---|--|--|
| LIBBY — 46-OZ. CAN
Pineapple-Grapefruit DRINK . . . 3 for 89¢ * | LIBBY
TOMATO JUICE, 46-oz. can 29¢ * | LIBBY
CATSUP, 20-oz. bottle 25¢ * | LIBBY
GARDEN PEAS, No. 303 can . . . 2 for 39¢ * | LIBBY — CRUSHED OR SLICED
PINEAPPLE, No. 1½ can 2 for 49¢ * | JACK SPRAT
APPLE JUICE, 22-oz. bottle 29¢ * | JELLO, all flavors 4 for 43¢ * | FLOUR, Pillsbury, 5-lb. bag . . . 59¢ * | SCOTT
DECORATED TOWELS, large roll . . 29¢ * |
|---|--|---|--|---|---|---|--|--|

PARKAY With Coupon and \$5.00 Additional Purchase **2 19¢** * **COFFEE** With Coupon and Maxwell House \$5.00 Additional Purchase Chase & Sanborn lb. **39¢**

- | | | | | | | | | | |
|---|---|---|--|--|---|---|--|--|---|
| JACK SPRAT
CUT GREEN BEANS, No. 303 can 2 for 29¢ * | JACK SPRAT
SPINACH, No. 303 can 2 for 25¢ * | JACK SPRAT
BLACKEYE PEAS, No. 300 can . . 2 for 25¢ * | DIXIANA FRANKS, 12-oz. pkg. 49¢ * | REELFOOT PICNICS, lb. 49¢ * | MAYROSE—Pickle & Pimento, Olive Loaf, Liver Cheese
LUNCH MEAT 3 for 89¢ * | SIRLOIN STEAK, lb. 89¢ * | BONELESS STEW BEEF, lb. 69¢ * | BACON, Hyde Park, lb. 79¢ * | GROUND BEEF, lb. 45¢ * |
|---|---|---|--|--|---|---|--|--|---|

CRACKERS, Cracker Barrel, lb. 19¢ * **Grape Jelly, 18-oz. glass** 29¢ * **U.S.D.A. CHOICE Chuck ROAST lb.** 39¢

- | | | | | | | | | | | |
|--|---|---|--|---|--|--|--|---------------------------------------|--|---------------------------------------|
| STALEY'S
Waffle Syrup, 24-oz. bottle . . . 35¢ * | PILLSBURY HUNGRY JACK
Pancake Mix, 16-oz. box 29¢ * | BALLARD OR PILLSBURY
BISCUITS 4 for 29¢ * | BAMA
Liquid, 22-oz. bottle 49¢ * | SWAN
CLOROX, ½ gal. 35¢ * | 50 FREE QUALITY STAMPS WITH PURCHASE OF 2 DOZ. EGGS
Chuck Roast, Center Cut, lb. 45¢ * | Shoulder Roast, lb. 59¢ * | Boneless Pot Roast, lb. 69¢ * | Rib Roast, lb. 79¢ * | Short Ribs, lb. 79¢ * | Rib Steak, lb. 89¢ * |
|--|---|---|--|---|--|--|--|---------------------------------------|--|---------------------------------------|

POPCORN, Jack Sprat . 2 lbs. 25¢ * **COFFEE** Instant 10-oz. jar Plus 2-oz. Free **\$1.29**

PEACHES Libby No. 2½ can **25¢**

- | | | | | | | | | | |
|--|-------------------------------------|--|---|--|--|---|---|--|--|
| KRAFT SALAD BOWL
SALAD DRESSING, qt. 39¢ * | RINSO, giant 59¢ * | 100 FREE QUALITY STAMPS WITH PURCHASE OF
JUST WONDERFUL HAIR SPRAY | ORANGES, 5-lb. bag 49¢ * | GRAPEFRUIT, 5-lb. bag 49¢ * | CARROTS 2 pkgs. 15¢ * | Radishes or Green Onions . . . 2 for 19¢ * | YELLOW ONIONS 3 lbs. 19¢ * | LIBBY FROZEN
ORANGE JUICE, 6-oz. can . . . 2 for 39¢ * | OCOMA — BEEF, CHICKEN OR TURKEY
DINNERS, 11-oz. size 39¢ * |
|--|-------------------------------------|--|---|--|--|---|---|--|--|

WIN A FREE DISNEYLAND HOLIDAY

Just place your name and address and phone number on the back of a Jack Sprat label. Drop them in the box at our store. Box will be sent to WMCT-TV, Channel 5, where drawing will be Feb. 3rd on ZORRO Show.



©WALT DISNEY PRODUCTIONS

COUPON
With This Coupon & \$5.00 Additional Purchase
COFFEE
lb. 39¢
— Limit One —
Expires 1-19-66

COUPON
With This Coupon & \$5.00 add. purchase
PARKAY
2 lbs. 19¢
— Limit One —
Expires 1-19-66

On The Local Scene

Mrs. M. L. Dilworth, an interesting visitor in the home of Mr. and Mrs. John Mahaffy, returned to her home in Shelby, last Sunday.

Mrs. Roy Gullett, who is Social Advisor at MSCW is expected home Tuesday for a brief visit.

THE NEWS FROM— MARIETTA By MRS. J. A. GILMORE

There will be preaching Sunday morning at 9:30 at the Marietta Methodist Church by the pastor, Rev. John Millsaps.

Mr. J. A. Cunningham and Mr. N. A. Thornton of Booneville were guests at the Marietta Methodist Church Sunday morning. Mr. Cunningham made an interesting talk to the adult class, which was enjoyed by those present. An invitation is extended to him to attend at anytime.

There will be a working at the Marietta Springs Thursday beginning at 1 p.m. Everyone interested please be present.

Mr. and Mrs. Ross Pharr and Judy, Mrs. Pete Senter and Miss Claudia Schoggen attended church Sunday morning at Corinth and were dinner guests of Bro. and Mrs. E. Wade.

Sorry to report Mr. R. O. Slack on the sick list. A speedy recovery is wished for him.

Mr. and Mrs. Pete Tynes of Huntsville, Ala., were guests of Mr. Tynes' parents, Mr. and Mrs. Lex Tynes, Sunday afternoon.

Sorry little Paula Jackson is on the sick list again. We wish for her a speedy recovery.

Everyone will be glad to know Mitchie Wilburn is home from the hospital doing nicely.

Ricky Butler and Harold Peters of Corinth.

Flower girl was Cynthia Harris of Marietta, Ga. and ring bearer was Glen David Qualls of Booneville.

Mrs. Price, the bride's mother, wore a green wool dress and black accessories. Her corsage was white carnations. Mrs. Ashcraft, the bridegroom's mother, wore a green wool suit with matching accessories. Her corsage was white carnations.

For traveling the bride was attired in a white wool suit with brown accessories. She wore the corsage from her bridal bouquet.

The couple will reside in Booneville.

Mrs. Don Eubank is in Jackson, Miss. for in-service training for Public Welfare work.

Mr. and Mrs. R. C. Green of Chicago, Ill. were guests last week of Mrs. Estella Warren.

Recent guests of Mrs. L. M. Womack were Dr. and Mrs. J. B. Overcash and children and Mrs. T. B. Dunahoo of Starkville.

Friends are happy to know that L. W. Peeler is recovering nicely from surgery in the Baptist Hospital last Monday.

Mr. and Mrs. R. C. Green of Chi-

cago, Ill., and Mrs. Gladys Hart Yarber. Mr. Jack Cunningham and son, John of Greenwood were here Saturday visiting Mr. Cunningham's mother, Mrs. R. B. Cunningham. Dr. and Mrs. John O'Neal and

Dr. and Mrs. John O'Neal and

Dr. and Mrs. John O'Neal and Long and Cliff. Mr. and Mrs. Carroll Yarber and Bill Moore were in Belmont last Friday to attend services for Otho

Jumpertown RCDC To Elect Officers Monday Night

The Jumpertown RCDC will meet Monday night, January 17 at six o'clock to elect officers. Everyone is urged to attend. The meeting will be held in the high school auditorium.

— VOTE FOR — MRS. BOBBY BURRESS, JR.

For
Justice of the Peace

FIRST DISTRICT
February 2nd, 1966



WAYNE H. HUNTER

The American Gem Society of United States and Canada

takes pleasure in announcing the re-appointment for 1966 of

Wayne H. Hunter of Way-Fil Jewelry

as Certified Gemologist American Gem Society



This coveted appointment is awarded to comparatively few jewelers in America. It is given only after strict examination of gemological proficiency and unquestionable business ethics. It must be re-won each year.



MR. AND MRS. BOBBY LOYD ASHCRAFT

Miss Ruby Joyce Price Becomes Bride Of Bobby Loyd Ashcraft In Church Ceremony

Miss Ruby Joyce Price, daughter of Mr. and Mrs. H. L. Price of Corinth and Bobby Loyd Ashcraft, son of Mrs. Carl J. Ashcraft and the late Mr. Ashcraft of Booneville, were united in marriage December 17, 7:30 p.m. at the Pleasant Hill Pentecostal Church in Corinth.

Rev. J. W. Fowler performed the double ring ceremony before a Christmas background. Tall candles were used to form a peak before a white satin prayer bench. Baskets of red poinsettia, red berries and holly, and fern used at vantage points completed the decorations.

Nuptial music was presented by Miss Demetria Gurley of Corinth, who played "Because" as the candles were lighted. Jerry Hight, soloist of Corinth sang "O Promise Me" and "Whither Thou Goest" and as the couple knelt he sang "The Wedding Prayer." Traditional wedding marches were played.

Mrs. Marjorie Harris of Marietta, Ga., served her sister as ma-

tron of honor. Mrs. Linda Smith and Miss Wanda Ashcraft, sister of the bridegroom, both of Booneville were bridesmaids. They wore identical dresses of green and gold satin brocade. Their shoes and veils were green. They carried a single long stem red rose.

The bride, given in marriage by her brother-in-law, Loyal Harris of Marietta, Ga., was wearing a floor length white satin gown that featured a jewel neckline and long sleeves tapering to petal points over the hands. Her shoulder length veil of illusion was attached to a blossom of pearls and crystal tear drops. She carried a Colonial bouquet of white carnations and lilies of the valley, atop a white Bible.

Serving the groom as best man was H. B. Lindsey, Jr., of Booneville. Groomsmen were Gary Smith and Cleyone Ashcraft, brother of the bridegroom of Booneville. Ushers were Roger Qualls of Booneville and Carroll Morrow of Corinth. Candles were lighted by

Flower girl was Cynthia Harris of Marietta, Ga. and ring bearer was Glen David Qualls of Booneville.

Mrs. Price, the bride's mother, wore a green wool dress and black accessories. Her corsage was white carnations. Mrs. Ashcraft, the bridegroom's mother, wore a green wool suit with matching accessories. Her corsage was white carnations.

For traveling the bride was attired in a white wool suit with brown accessories. She wore the corsage from her bridal bouquet.

The couple will reside in Booneville.

JANUARY

CLEARANCE SALE

MOST EVERYTHING PRICED AT COST OR BELOW, WE MUST MAKE ROOM FOR SPRING MERCHANDISE ARRIVING SOON!!

BOYS' WINTER
COATS
NOW
Reg. 4.00 2.00
Reg. 2.00 1.00

LADIES'
Sweaters
Reg. 8.49 4.00
Reg. 7.88 3.00

SIZES 7 TO 12
Girls Dresses
Reg. 2.88 **1.50**

Ladies Corduroy
SLACKS
Reg. 1.98 **1.00**

MEN'S TANKER
JACKETS
Reg. 5.49
Now **2.75**

FOR BIRTHDAY, or SPECIAL EVENTS

ALL TOYS
REDUCED

Girls 2 to 12
Pajamas
Reg. 2.88 **1.50**

GAME & SHELL
VEST
Reg. 3.98 **2.00**

1/2 PRICE

Men's Flannel
SHIRTS
Reg. 1.50 1.00
Reg. 2.00 1.50

Boys' Cardigan or Pullover
SWEATERS
Reg. 4.99 2.00
Reg. 1.99 1.00

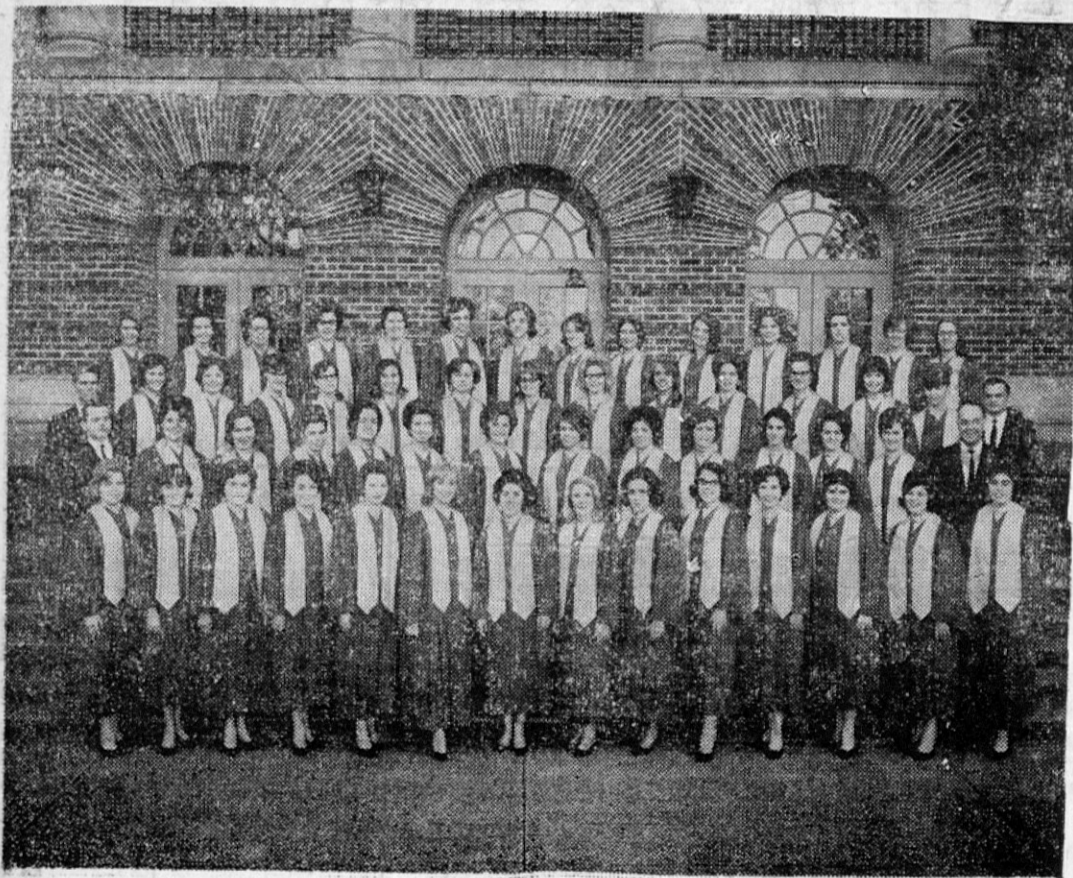
Men's Insulated
Underwear
Reg. 1.79 1.00
Reg. 1.00 75c

Boys Long Sleeve
Knit Shirts
Reg. 1.00 **50c**

Boys Flannel
SHIRTS
Reg. 1.50 **50c**

OUR ENTIRE STOCK OF SHOES
REDUCED 50 to 60% OFF!

TU-CO DISCOUNT STORE
Booneville, Miss.



Blue Mountain College Chorus for 1965-66, the Director, Accompanists and College President.

NOTICE

During a theft at TU-CO's on Monday, December 6th, some checks were misplaced. Any person giving checks to TU-CO, Friday, Dec. 3rd or Sat. Dec. 4th, please come by TU-CO's office to make sure that your check has properly cleared your bank.

TU-CO

**THE NEWS FROM—
PHARRTOWN
MISS VICTORIA PHARR**

Mr. and Mrs. Norris Thornton and son left last week for Zion, Ill., where they will make their home in the future.

Mr. and Mrs. Bill Robertson of Booneville visited the Gaylia Cleve-lands, the Monroe Morelands, and the Floyd Fergusons Sunday. They attended church at Pleasant Val-ley.

Visitors in the home of the W. W. Gann family last week were Mr. and Mrs. Bluford Miller of Booneville, Mrs. Anna Sweeney and Rhonda of Zion Rest, Mrs. Bobbie Chase and sons, of Marietta, and Mr. and Mrs. Youal Thornton and James and Jeanette Pounds.

Miss Ollie Pharr accompanied by

Mr. and Mrs. Buck Moore and Mrs. Thomas Cunningham of Booneville attended the funeral of their cousin, Otha Yarber in Belmont, Fri-day.

On the sick list this week are Mrs. O. X. Franks, Mrs. John H. Barnes, Mrs. Elizabeth McCreary, and Mrs. Dora Moreland. All are improving at the present time and friends hope for each of them an early recovery.

Mrs. Haze Hall and son, Terry have returned from Waycross, Ga., where they had been visiting for a couple of weeks.

Friends of George Houston Pharr are glad to know that he is home from the hospital and making sat-isfactory progress.

Mr. and Mrs. Wilbur Pounds and children visited friends in Tish-omingo Sunday.

Hubert Gann visited Mr. and Mrs. Amon Hall last week. Mr. and



MR. AND MRS. KIMBLE LEE BOLEN

Miss Carolyn Gardner Becomes Bride Of Kimble Lee Bolen In Church Ceremony

Classic beauty was reflected in the simplicity of the setting at the First Methodist Church on Decem-ber 30, when Miss Edith Caro-lyn Gardner and Kimble Lee Bo-len, exchanged their marriage vows, with the Rev. W. R. Richer-son officiating in the double ring candlelight service at 5:30.

The bride is the daughter of Mr.

and Mrs. Kelly Gardner. The bridegroom is the son of Mr. and Mrs. Kimble D. Bolen.

The program of nuptial music was presented by Mrs. Mary Gault Nabers, organist, and Mrs. Jack Dubard, vocalist, who sang "Whit-ther Thou Goest" and "The Wed-ding Prayer"

The chancel of the sanctuary was impressive with woodwardia fern trees mounted with tiers of pyra-mid shaped tapers to form an archway of soft light. The design was centered with a graceful ar-rangement of Happiness roses, in a tall floor urn, veiled with touches of lacy fern. Graduating rows of the outlining palm trees completed the bank of greenery on either side of the altar scene. Family pe w s

were marked with clusters of white ribbon bows.

The bride was given in marriage by her brother, Mike Gardner. Ac-centuating the bride's loveliness, the traditional gown combined the elegant richness of satin with the soft flow of chiffon in a slender sheath caressed with Chantilly lace in a draped overskirt. The closely fitted bodice featured a demure neckline and long tapered sleeves. The regal effect was enhanced by a dome carriage back from which swirled a lace mantle chapel train delicately outlined with scallops to complete its charm.

She carried a Colonial nosegay bouquet with white satin and vel-vet leaves, with an orchid in the center.

Miss Gloria Dixon, maid of hon-ore, wore a two piece costume of peacock blue crepe, designed with elbow length sleeves and harmon-izing accessories with which she wore a pearl pendant, the gift of the bride. She carried a single red rose.

David Bolen, served his brother as best man. Ushers and candl-ers were Tommy Comer and Bob Farrar.

The bride's mother wore a light green double knit suit, a small beige net hat and accessories. The mother of the bridegroom wore a red crepe two piece costume. The grandmother of the bride, Mrs. Cletra McCoslin, was attired in a blue wool dress with matching hat. They wore white carnation corsa-ges.

After the ceremony, the couple received with their parents and the attendants in the foyer of the church.

At the entrance of the audito-rium, Miss Dianne Martin kept the guest register. Miss Genia Toye Martin served as vice girl.

For their short wedding trip, the bride chose an off-white suit with matching accessories and the or-chid from her bouquet.

On The Local Scene

Miss Ann Fay Voss, of Durango, Colorado, is making her home with her aunt Mrs. Ruth Martin. Miss Voss has accepted a position with the Medical Clinic.

Mrs. C. E. Campbell, Mrs. Ebby Moore, Mrs. T. W. Muse and Meg will visit this weekend in the home of Mrs. Campbell's sister, Mrs. W. S. Montgomery in Tuscaloosa, Ala. Mrs. Montgomery's friends are in-terested to know that she is recov-ering from major surgery.

Mrs. P. B. Huff and Mrs. Gene Martin and children of Chattanooga, Tenn. were recent guests in the home of Mrs. D. L. Prichard.

Mrs. Verna Wright, Miss Lillian Gaines, Mrs. Mary Nell Marshall, Mrs. Clifford Long, Mrs. James Davis, Mr. and Mrs. Luther Moore were in Memphis Sunday to attend the spring and summer showing of the Southern States Fashion Exhib-itors at Hotel Peabody.

Mrs. J. E. Estes accompanied Mr. and Mrs. Paul Rowland and their son, Gaylon Rowland of Ripley to Columbus Monday where Gaylon, who is in the Air Force, was transferred from Amarillo, Texas. He had completed a two weeks' visit with his parents.

David Moore was at home from Miss. State University last week-end.

Mr. and Mrs. Blake Wheeler, Mrs. Minor Swinney, Mrs. Harley Horn, Mrs. Jack Jones, Mrs. Ludie Whisenant and Mr. and Mrs. Melvin Putt were in Tupelo Sat-urday evening for the Eastern Star installation of officers. Mrs. Durel Bolton, Past Grand Matron and Grand Treasurer, Mr. Walter Spain, Past Grand Patron were the in-stalling officers.

Mrs. Alma Crow's friends are pleased to receive the news of her recent improvement and to wel-come her home from the hospital.

Greg and Meg Muse, children of Mr. and Mrs. T. W. Muse have re-turned from a visit with their grandmother in Corinth.

atmosphere of the home.

Guests were served baked ham, bean casserole, potato salad, scal-loped corn, green salad, rolls, cof-fee, tea and chess pie for dessert.

WHITE JANUARY



STOCK UP AND SAVE

81 x 99" White	1.89
Double Fitted White	2.09
81 x 108" Percale	2.49
72 x 99" White	1.79
Twin Fitted White	1.89
Solid Pastel	
81 x 99"	2.19
Double Fitted	2.29
Floral and Stripe	
81 x 108" and Double Fitted	2.59
Floral and Stripe	
72 x 108" and Twin Fitted	2.29

PILLOW CASES

42 x 36" White Muslin	88c pr.
42 x 36" Solid Pastel	98c pr.

January Clearance of Women's Misses', Juniors' DRESSES

YOUNG FASHION CLEARANCE

Girls' Coats and Dresses



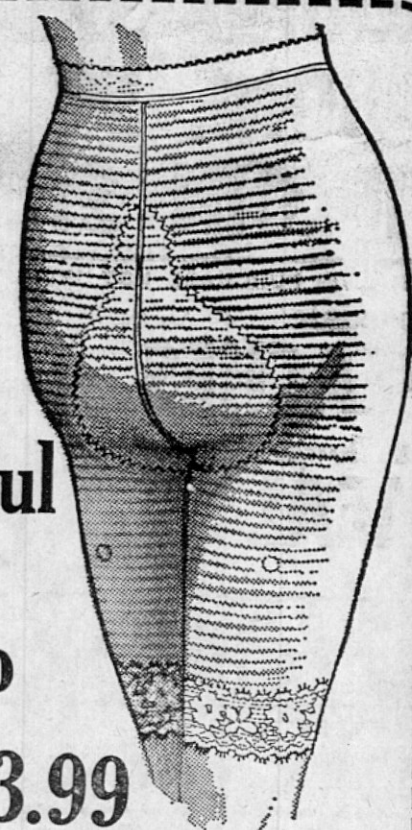
It's The Dress Sale of The Year!
9.98 Reduced To 7.98
7.98 Reduced To 5.98
5.98 Reduced To 3.98

ALL DRESSED UP IN NEW COTTON CHARMERS

Candy Stripes Daintily Edged with Lace, Picture Pretty Prints, Organdy Pinafore Over A-Line Dress. Reduced From 5.98

3.98

to make the beautiful torso more so



\$3.99

BESTFORM "natural look" panty

Instead of flattening your derriere, this long leg panty girdle gives you fashion's new lifted, rounded look! With flat seams so you can wear it under clinging knits, this becoming style has pretty latex-lace-edged legs for a smooth look from your waistline down. White. S-M-L-XL.

SHERMAN'S
★ Booneville ★ Fulton ★ Ripley

WATCH FOR REXALL SALE SPECIALS AS SEEN ON NBC-TV THE TODAY SHOW starring HUGH Downs and THE TONIGHT SHOW starring JOHNNY CARSON THURSDAY, JAN. 13 through SAT. JAN. 22

CARA NOME HAND LOTION Fragrant, lanolin-rich. 16 fl. oz. REG. 2.00	98c	CARA NOME HAND CREAM Vanishing type, greaseless. 8-oz. jar REG. 1.75	87c
300 REXALL ASPIRIN None finer, none faster-acting. REG. 1.69	84c	REXALL Mi-31 ANTISEPTIC MOUTHWASH 24 fl. oz. REG. 1.25	62c
KLENZO REXALL ANTISEPTIC MOUTHWASH 24 fl. oz. REG. 1.07	54c	REXALL BLUE ORAL ANTISEPTIC MOUTHWASH Pint REG. 98c	49c

INSTANT SPRAY STARCH REXALL 24-oz. Aerosol 49c
LIQUID DETERGENT REXALL Pink Lotion or Clear, 22 fl. oz. 47c
RUBBER GLOVES Household, Sm., Med., Lg. 3 Pks. 99c
SEAMLESS NYLONS Mesh or Regular Knit 2 Pks. 77c
HAIR BRUSHES Ladies' and Men's. Nylon Bristle 29c
100% PLASTIC PLAYING CARDS Bridge, Deck 79c
ELECTRIC ALARM CLOCK Sunbeam 2.69
ELECTRIC VAPORIZER Rex-Ray Gallon 2.89
HEATING PAD Rex-Ray Electric 1.79
STAINLESS STEEL RAZOR BLADES Double Edge. Pack of 5 29c - 4 Packs

REXALL FAST PERMANENTS Super, Regular, Gentle, Silver or Little Girls'. REG. 2.00	1.00	BRITE SET HAIR SPRAY Casual, Regular or Hard-to-Hold. 14 oz. Aerosol	59c
--	-------------	---	------------

REXALL DELUXE TOOTH BRUSHES Nylon bristles. REG. 69c each	3 for 88c	REXALL FACIAL TISSUES 400 (200 2-ply) tissues.	97c
		REXALL BATHROOM TISSUE 4 Roll Pack	44c

REXALL SACCHARIN 500 Free with 1000 1/4-gr. tablets. Both for	99c
89c GLYCERIN SUPPOSITORIES REXALL. Adult or Infant. 24's 2 Jars	99c
69c FUNGI-REX ATHLETE'S FOOT POWDER 4-oz. cans	2 for 89c
1.89 SHAMPOOS REXALL. Choice of 4 Types. Each	94c
1.00 DEODORANTS Cara Nome Cream, 2 oz. Roll-on, 1 1/2 oz. Each	50c
HOT WATER BOTTLE Red	1.19
3.00 MULTI-VITAMINS REXALL One Tablet Daily. 200's	1.50
3.18 CHEWABLE VITAMIN C TWIN-PACK 100 mg., 120's 2 Bottles	1.59
HAIR DRYER Rex-Ray Electric Deluxe	4.99
1.29 SHAVE CREAM REXALL Lavender. 2 Types. 14-oz. Aerosol	64c

DUCKWORTH REXALL DRUGS

Mrs. Thurman McCreary visited the Willie Gann family.

Toy Pharr of Savannah, Tenn., was here on business last week.

Calvary W.M.S. Has Royal Service Program Mon. Night

Seventeen members of the Calvary Baptist WMS met at the church Monday night for the Royal Service Program with Miss Jessie Pressley as program chairman. The program was entitled, "Indians of New Mexico."

Mrs. Ona Wallace led the group in singing "Send the Light." Mrs. Angie Barnes gave the meditation on Psalms 43.

Miss Hortense Morgan and Mrs. Berta Barnes read responsively the Lord's Prayer and an Indian Paraphrase.

Mrs. Evelyn Grubbs gave the Call to Prayer.

Mrs. Dot Jackson, Mrs. Mary Crabb and Mrs. Hallie Rowan represented the three Indian tribes of New Mexico. These were Pueblo, Navajo, and Apache. Each lady, dressed in Indian attire, told interesting facts of each tribe.

Miss Pressley dismissed the program with prayer. Afterwards, Mrs. Mary Crabb, president of the W. M. S., led the group in the monthly business meeting.

KEMP'S Super Market



LOWER PRICES - Plus United Stamps For FREE GIFTS
OPEN UNTIL 7:30 EACH NIGHT

FRYERS Purnell Pride	lb. 27c
ROAST Armour Star-Blade Cut	lb. 39c
RIB STEAK	lb. 79c
BRISKET STEW BEEF	lb. 39c

Rutabagas, lb.	7c	Potatoes . . . 10 lbs.	49c
Bananas, lb.	10c	Carrots 2 cello pks.	19c
FRENCH DRESSING, Kraft, 8-oz.	31c		
Tomato Catsup, Jack Sprat, 14-oz.	2 for 39c		
Fruit'n Slaw Dressing, Kraft Low Calorie, 8-oz.	39c		
Sweet Cucumber Disks, Heinz 13 3/4-oz.	27c		

WITH \$5.00 ADDITIONAL PURCHASE AND BOTTLES OR DEPOSIT

DRINKS	2 cartons 39c
Cut Green Beans, Bush, No. 2 size	2 for 39c
NORTHERN BEANS, Bush, 300 size	10c
PEAS, School Day, 300 size	2 cans 35c

WITH \$5.00 ADDITIONAL PURCHASE

SHORTENING Humko	3-lb. ctn. 49c
REYNOLDS WRAP, 25-ft. roll	29c
Scott Family Place Mats	24 for 29c

--- FROZEN FRESH ---

MRS. PAUL'S Onion Rings, 5-oz.	25c	ADAMS 6-OZ. Orange Juice 2 for	39c
BORDEN'S Ice Milk, 1/2-gal.	49c	SARA LEE CHEESE DANISH Coffee Cake, 11-oz.	79c

Compact Car Sale

Did You Know That

You Can Still Buy A

New Chevrolet

For Less Than \$2,000?

Come See Today At

Billingsley Chevrolet Co.



excellent media for developing this talent—the Art Department.

At Northeast this year there are 17 art majors including 13 freshmen, three sophomores, and one special student.

A great variety of courses is offered by the Northeast Department of Art. A beginning course introduces the student to the basic art techniques, use of pen and ink, pencil, charcoal, and pastel. Students do on-the-spot drawing while on field trips in the Booneville vicinity. Art 102, a continuation of the beginning course, offers the student a chance to work primarily with water-colors.

Another course based on basic design principles deals with proper and interesting designing with emphasis on the color wheel and line techniques. In the advanced art students, has certain prerequisites—two courses in beginning art or special permission from the instructor. Here the student works with oils, water-colors, or casein.

A lecture course offered by the Art Department deals with art history and development. A course in ceramics dealing with the various methods of building with clay and a study of glazes is also offered.

In cooperation with the Northeast Speech Department, the students gain first-hand experience in working with designs and sites. Under the direction of Mr. Marty McLendon, chairman of the Northeast Art Department, the students have assisted this year with the stage scenery for two major productions, "The Solid Gold Cadillac," and "Amahl and the Night Visitors" and the annual beauty pageant.

Later in the year, the Art Department will sponsor a student show, which will give all students from all of the art classes a chance to exhibit their work.

THE NEWS FROM—
BLACKLAND
By MRS. L. L. McALPIN

Mr. and Mrs. Fred Clement and Miles spent Sunday in Blue Springs with Mr. and Mrs. J. M. Clement. Mr. and Mrs. Dewitt Palmer of Pleasant Ridge spent Sunday with Mr. and Mrs. R. H. Kelley.

Mr. and Mrs. Max Wilson of Miss. State University were here for the weekend with the R. B. Hills and the Wilsons of Wheeler.

Mrs. Myrtle Hodges of Wheeler spent Tuesday with Mr. and Mrs. Jim Oakley.

Mrs. L. H. Kelley visited relatives at the Tupelo Community

Local Business
By G. S. TALBOT
Chairman, Dept. of Journalism

One of the great advantages of newspaper advertising is that it enables the advertiser to tell readers just where in the local community they can buy an adver-

tised product. National manufacturers realize an item has to be sold locally. The manufacturers, for that reason, place many advertisements in hometown newspapers and include the local dealer's name, at the company's expense.

One company executive recently said, "We know that most people don't decide to buy when they see our ad without a dealer's signature; they might only decide they'd LIKE to have one of our suits. But to induce the public to buy our clothing we have to advertise our dealer outlets."

Most businesses are privately owned and have very loose contracts with national firms. The local business is generally under few, if any, controls of the national

manufacturer. "Nevertheless, we don't have a very tough time getting our local representatives to advertise," said the executive. "Once they learn that our generalized ads don't naturally draw customers to them, they initiate their own sales program."

The local newspaper provides the most adequate and regular listing of local business in a community. When there is a failure of local advertising, the consumer turns to other communities.

The pull of local competition keeps a community active and growing. Advertising lineage has been used by some researchers as the main gauge of a community's level of business.



We are children of God; and if children, then heirs; heirs of God, and joint-heirs with Christ.—(Rom. 8:16).

We are children of God, radiant, all-wise, all-loving, all-conquering child of God. Nothing in the external world has power to worry or depress us. Nothing has the power to make us feel slighted, hurt or mistreated. We as children of God are all-conquering and triumphant. We walk securely and confidently in the knowledge of this truth.

Northeast Junior College Has Excellent Media For Developing Artistic Talents

(This is the second in a series of sixteen articles featuring the academic departments at Northeast Mississippi Junior College. To students who are gifted with artistic talent, the Northeast Mississippi Junior College offers an

GET OUR
Motor and Electrical TUNE-UP
For Top Performance And Efficiency



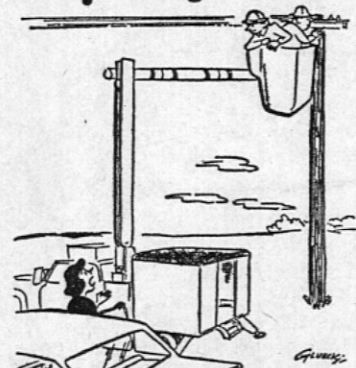
Check includes Distributor, Generator or Alternator, Starter, Voltage Regulator.

Have recently completed an Electrical Tune-Up Refresher School and we have the know-how and equipment to check and make necessary repairs on the complete automobile electrical system.

McCoy Garage

Highway 45 North

My Neighbors



"Pardon me, gentlemen—but I have a cat up a tree just a few blocks away."

W. T. WHITLEY'S
Grocery, Market & Service Station

BIG "V"

Highways 4 and 30

WE GIVE AND REDEEM
DELTA STAMPS



100 FREE DELTA STAMPS WITH PURCHASE OF

3 lbs. GROUND BEEF

CHUCK ROAST	lb.	49c
ROUND STEAK	lb.	69c
T-BONE STEAK	lb.	89c
SIRLOIN STEAK	lb.	89c

WITH \$5.00 PURCHASE NOT INCLUDING CIGARETTES & TOBACCO

Rosedale PEACHES	No. 2 1/2 size	19c
Sunflower MEAL	5 lbs.	29c

\$10 PURCHASE GETS BOTH ITEMS

DUZ
WASHING POWDER, giant size 68c

JACK SPRAT
PORK and BEANS 3 for 25c

BANANAS lb. 10c

MORTON'S
FROZEN PIES, 14-oz. 3 for \$1.00

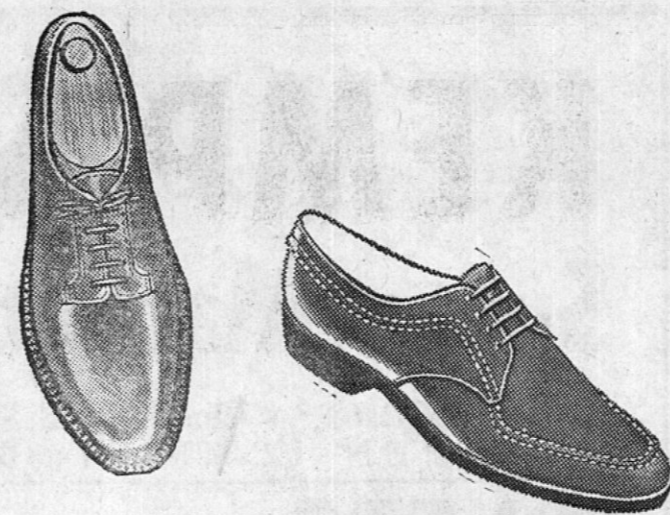
JACK SPRAT
CAKE MIX 4 for \$1.00

JACK SPRAT
CATSUP, 14-oz. 2 for 35c

SUNSHINE
FLOUR 25 lbs. \$2.10

WE ARE OPEN 7 DAYS A WEEK
EACH NIGHT UNTIL 8:00 P.M.

BIG SALE ON SUITS



Make our loss your gain at these low prices. We must move our stock of men's wear, so we've marked down merchandise that you want at a big saving.



MEN'S AND BOYS'
SUIT SALE

A really good chance to buy a fine suit at budget prices you can afford to pay. Selected Lot of Men's and Boys' Suits by

CURLEE & SEWELL

NOW REDUCED TO

\$21.95

Men's
CITY CLUB & PEDWIN SHOES

Values up to \$15.00

NOW ONLY
\$5.00

ALL MEN'S and BOYS'
SWEATERS

1/3 Off

BOYS' ALL-PURPOSE

COATS
ZIP-OUT LINING
\$16.95 VALUE

NOW ONLY
\$9.95

GRAY'S

Booneville, Miss.

Has Winter Been Tough on your Shoes? Don't despair, we have a solution. A Shoe Sale that's really a Sale!

There's still lots of cold weather ahead in the next few months. What an opportunity to get your son a warm all-purpose coat . . . and without the zip-out lining, a good coat for those rainy spring days.