

Prentiss County School Plan Is Rejected

The Prentiss County Board of Education was recently called to Jackson along with nineteen other counties and given notice that their Freedom of Choice Plan had not been approved.

The Board is being asked to submit another plan for immediate consideration.

Grammar School P.T.A. To Meet

The Booneville Grammar School P.T.A. meeting will be held Monday, Sept. 19 at 7 p.m.

The educational progress of your child is directly proportional to your interest as a parent; therefore, it is hoped that all parents of children enrolled at the Booneville Grammar School will attend this meeting. Other interested individuals, regardless of whether you have children in school, are also invited.

An organizational meeting of officers and committee members was held at the Booneville Grammar School Monday afternoon, Sept. 12 to plan for the first regular meeting on Sept. 19. Various committees were formed and further information concerning these committees will be announced at the first regular meeting.

Various mothers have already volunteered their services for these committees; therefore, there should be no reluctance in attending the first meeting on the part of other parents who might fear they are slated for various committee assignments.

New Site Seniors Elect Officers

The senior class of New Site High School has elected officers for the following year. They are: president, Larry Johnson; vice-president, Charles Jacobs; secretary, Sue Shackelford; treasurer, Linda Downs; and reporter, Norma Massengill.

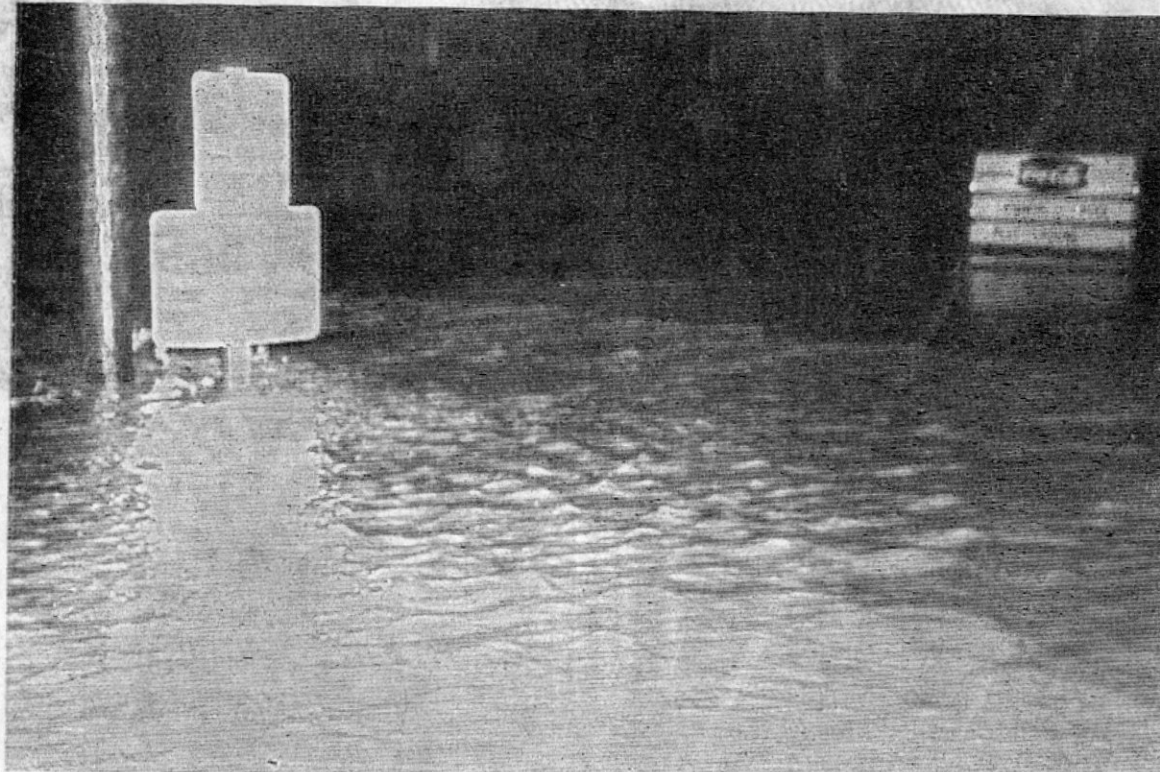
Norma Massengill

Notice

The annual all day singing will be held the fourth Sunday in September at Rolland Mill Baptist Church, located five miles south of Burnsville. Everyone is invited.

Morrell Hatcher, Chairman

P.T.A. officers for this year are: Robert Floyd, President; Mrs. R. B. Prichard, Vice-President; Mrs. Alvin Copeland, Secretary; Mrs. L. H. Oakley, Treasurer; and Mrs. Alan Norton, Program Chairman.



FLASH FLOOD—This was the scene at the intersection of North Third Street and City Park Drive about 8:15 Friday night as a local flash flood had dumped sheets of rain on Booneville in a matter of minutes. The deluge also inundated several other low-lying streets and areas in the city, including the Northeast Mississippi Junior College football field, forcing postponement of the Booneville-Baldwyn football game until Saturday night.

Singing Shepherds At Grace Methodist

The Singing Shepherds, a singing group who are well known in sacred concert and evangelistic circles across the United States and Europe, will be in concert at Grace Methodist Church Sept. 22, at 7:30. A cordial invitation is extended to all to attend.

Booneville Students Pledge Sororities

The following students from Booneville have pledged sororities and fraternities during rush week this year at Ole Miss and Mississippi State.

Becky Gullett, Annabelle Prichard, and Linda Wood pledged Alpha Delta Pi, and Stan Pounds accepted a bid from Kappa Alpha at Miss. State; at Ole Miss Sandra Pounds, Harriett Moore, and Linda Martin were pledged by Alpha Pi and Wilbert Walden by Kappa Sigma.

Sportsmen's Club To Meet Tues. Night

The Prentiss County Sportsmen's Club will meet on Tuesday night, September 20, at 7:30 p.m. Supper will be served from 7:00 to 7:30. A film on hunting will follow immediately. A discussion of new license requirements and hunting seasons will be held. All members, prospective members, and visitors are invited to attend.

All persons interested in archery are invited to attend a special showing of archery films from Ben Pearson, Inc., on Thursday, Sept. 15, at 7:30 p.m.

Dr. Lauderdale Has Position At State University

Dr. E. P. Lauderdale, Broward Junior College dean in Fort Lauderdale, Florida, has submitted his resignation. Dr. Lauderdale has accepted a position in the School of Education staff of Mississippi State University in Starkville, where he will be working under a \$15 million Ford Foundation grant to improve curriculum and instruction in cooperation with Mississippi junior colleges.

Mr. Lauderdale was one of the first junior college faculty members going to Ft. Lauderdale six years ago to become its first dean of instruction.

He said he was leaving to accept a better position. "This is a professional promotion to me," he said. "Something I've wanted to do."

He said "I have had a delightful time working with the college." "Its faculty is one of the best I've known anywhere. They are professionally competent and interesting as individuals. I greatly appreciate their fine cooperation with me as their dean."

Mr. Lauderdale said that a major source of satisfaction to him has been the fact "I've had the opportunity of leading the faculty in its curriculum development, the supervision of instruction and in directing self-study which led to full accreditation by the Southern Assn. of Colleges and Schools last December."

Mr. Lauderdale is a native of Thrasher, Miss., and received his bachelor's, master's and doctor's degrees at the University of Mississippi.

He was a professor of education at Alabama College and at Howard King College in Brownwood, Texas, before going to Broward.

Lauderdale said he was "extremely well pleased" with the new position.

"When you grow up in a state you always look forward to working on the staffs of one of the universities," he said. "It is always nice to reach your goal."

Lauderdale is a resident of Plantation where he is active in Rotary and is vice president of the Peters Elementary School P.T.A.

He is married and has a daughter, Margaret, 10.

—Fort Lauderdale News

County Singing Convention To Convene Sat.

The Prentiss County Singing Convention will convene Saturday night in the Court House in Booneville and continue through Sunday.

The committee would like to appeal to the citizens of Prentiss County to come out and help make this convention one of the best. They have the promise of many good singers and would appreciate the cooperation of the local singers. Vick Riddle, Charlie Barron and Price Brackeen will be in charge.

Bogus Checks Are Cashed At Banks In Tishomingo

Two bogus checks amounting to more than \$4,000 were cashed by two Tishomingo County banks bearing the business name of Corinth Livestock Commission Co. and the forged signature of the firm's secretary-bookkeeper on Wednesday of last week.

Last week's issue of this newspaper carried a news item stating that on that same day, the Peoples Bank and Trust Company here refused to cash a similar check when Mrs. Agnes Carter became suspicious because she did not recognize the name, James Watts, to whom the check was made. The check was for \$2,900.75.

A local bank officer said further investigation revealed that the men were traveling in a Hertz Rental car which they obtained at Gadsden, Ala. under a fictitious name and address. The Hertz Company is now listing the car as stolen.

On Wednesday of last week, the Lika Bank cashed a check for \$1,457.75 made to the order of Glen Adams and the other was cashed by the Tishomingo Bank in the amount of \$2,900.75. It was made out to a Paul Darby.

New Books At The Public Library

The following is a list of new books at the Public Library, "The Last Days"—Toland; "Billy Graham"—Pollock; "The Far Family"—Dykeman; "The Best Is Yet To Be"—Plagemann; "Menfreya In The Morning"—Holt; "Down Where The Moon Is Small"—Llewellyn; "I, The King"—Keys; "A Woman of the People"—Fortress; "Fury"—Vaughn; "Never Call It Loving"—Eden; "Hegerty, M. D."—Seifert; "Ellen Mathews, Mission Nurse"—Hays; "Nurse's Alibi"—Corby; "Cry In The Night"—Roos; "Coffin Corner"—Shannon; "The Valley of Death"—Cory; "Bit-terbrush Basin"—Thompson.

Juvenile Books—"Jefferson Davis"—Martin; "Spain, Wonderland of Contrasts"—Daly; "The Best of Friends"—Baker; "The Devil Cat Screamed"—Davis; "The Fox Friend"—Coatsworth; and "Fox and the Fire"—Miles.

Junior College, City Schools Show Enrollment Increase

The Northeast Mississippi Junior College here is experiencing a decided increase in enrollment with over 1075 students registered as of Wednesday afternoon as compared with 848 for last year.

New sections of classes have had to be opened and instructors who heretofore have had a room for their use only, are now sharing classrooms with other instructors. Additional office spaces have been added for these teachers who were using classrooms for offices as well as for instruction.

The enrollment figures in the local schools are: Booneville High School, 539 as compared to 480 last year; Booneville Junior High School, 380 as compared to 370 last year; Booneville Grammar School, 473 as compared to 498 last year and Wick Anderson School, 541 as

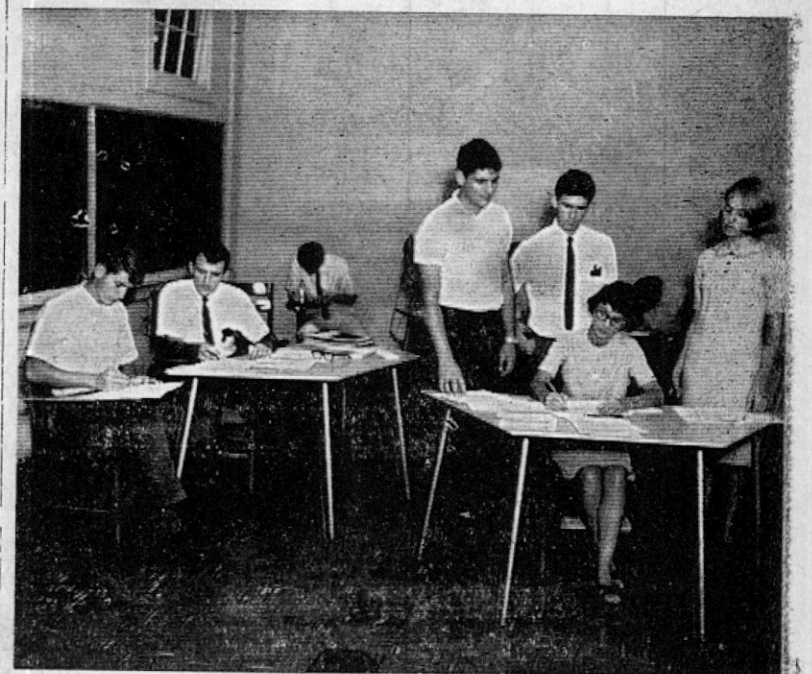
compared to 505 for last year. Thus the college increase is far more than is reflected in the increase in other Booneville schools.

The Northeast Mississippi Junior College has one of the most unique transportation systems of any junior college in the state in that it provides free transportation to students of the five county district,

Alcorn, Prentiss, Tishomingo, and Union.

Although it is impossible to pick each student up at his home, the college does try to route a bus through main highways and local communities.

Students interested in riding a bus may contact the Director of Student Personnel at Northeast.



REGISTRATION—Shown above during registration at the Northeast Mississippi Junior College are from left to right: John Adams, Iuka; John Tomlinson, Kosuth, instructor in data processing; Ronnie Burcham, Booneville; Mike Harrison, Ripley; and Sandra Holloway, Corinth. Seated is Mrs. Jane Rutledge, instructor in business.

H. V. Shackelford To Depart For Europe On Union Bankers Trip

Mr. H. V. Shackelford of Booneville, Mississippi, will depart on September 22 for an all - expense-paid 18-day tour of Europe. The trip was won by Mr. Shackelford in a nationwide contest sponsored by Union Bankers Insurance Company of Dallas, Texas. He was one of the top producers in the Company's sales force and as such, will take the trip to 17 key cities in France, Holland, England, Germany, Italy, Monaco, Switzerland and Belgium.

MSU To Offer Music Course At NEMJC

An attempt is being made to organize a class in "Materials and Methods of Public School Music, Music Education 533. The course will be offered by Mississippi State University through General Extension.

Interested individuals, teachers and others, are asked to report to Room 9 of the Science Building on Thursday, Sept. 22 at 6:30 p.m.

Interested parties having questions may contact H. H. Daws on the Northeast campus.

Calvary Baptist WMU Has Book Study

Twenty ladies of the Calvary Baptist Woman's Missionary Union enjoyed a most interesting book study Thursday night at the church.

The book, entitled Great Is The Company, written by Violet Wood, was taught by Mrs. Buster Jackson, mission study chairman. Mrs. Charles Rowan gave the devotion with scripture taken from John 4:3-36.

The study opened with a question and answer period on the Bible. Mrs. Jackson then told the history of the American Bible Society and some of the people through the ages who have translated the Bible. Mrs. Billy Whisenant gave the reasons for the Bible translations.

The study was closed with a candlelight service and meditation led by Mrs. Charles Crabb.

After the study a surprise stork shower was given for Mrs. Lee Kendrick. Fellowship and refreshments were enjoyed by all.

Fairview Bapt. Church Revival Sept. 18-24

Revival services at the Fairview Baptist Church, Lake City, begin Sept. 18 and continue through the 24th. Bro. H. C. Smart, pastor, will bring the message each night at 7:30 p.m.

A cordial invitation is extended to everyone.

Calvary Baptist WMU Has Season Of Prayer For State Missions

The season of prayer for state missions was observed at the Calvary Baptist Church September 11-13. This year's goal for the state is \$200,000.

Tuesday night a program was held at the church with the theme being "Strengthening Foundations for Missions Advance." This program was directed by Mrs. Charles Crabb, WMU president.

Before the program a business meeting was held. Plans for the September commission were given by Mrs. Richard Harber.

Miss Jessie Pressley gave the devotion from Hebrews 10:11-25. She also read the prayer calendar. Mrs. D. W. Pressley led this prayer for the missionaries mentioned.

Topics such as: Christ in Action, Communion Tract Distribution, and the BSU Program were discussed by Mrs. Charles Rowan, Mrs. Richard Harber, and Mrs. Joe Cochran.

At the end of each part, special prayer was given for the spiritual needs in Mississippi.

After the offering was taken, Mrs. Trent Grubbs dismissed with prayer. Twelve ladies attended.



KICKOFF RETURN — Booneville halfback B'll Breedlove, left foreground, returns a kickoff 24 yards as Baldwin's No. 82 pursues early in the second period of the game here Saturday night. Baldwin took advantage of two Booneville fumbles to notch a 13-0 win.

Blue Devil Gridders Go To Okolona Friday Night; Lose To Baldwin 13-0

Two Booneville miscues in their own territory early in the second period of play here Saturday night turned into scores by Baldwin as the Bearcats scratched out a 13-0 win over the Blue Devils.

Outside of these two bobbles, the play was fairly even throughout the game. With remarkable regularity, the ball changed hands six times in the opening quarter, during which neither team was able to pick up successive first downs and lost the ball on fumbles, interceptions or punted it away.

In the second quarter, Booneville held and forced a punt to take possession at their own 27. Freddie Tollison picked up two, then a fumble on a reverse was recovered by Baldwin at the 20. A running play was good for nine, after which Kenny Lytal went the remaining distance to score. The point try from placekick was good and the Bearcats led 7-0.

Lightning struck again, quick.

Booneville received the ensuing kickoff at their 18 and Bill Breedlove returned to the 30. On the first play of the series Baldwin recovered a fumble handoff at the 29 and on the next play passed for a touchdown. The kick for the point was good, but Baldwin was penalized 15 yards for holding and from the longer distance the try was partially blocked and short.

The game then settled back into almost a replay of the first quarter, except that on two or three occasions the defenses were called upon to snuff out threats. Jerry Echols intercepted at the Booneville 20 to stop one drive as the half ended.

Ronnie McKinney, Larry Garner, Gary Martin, Jimmy Downs and Stanley Horton along the front wall turned in creditable performances on defense for the Booneville team, along with the defensive secondary, but the Blue Devils never could get the necessary blocking to

click in order to generate a sustained offensive.

After a win and a loss in their two games at home, the Blue Devils will go on the road for the first time this season Friday night when they travel to Okolona to take on the Chieftains.

The Okolona squad had good size, excellent speed and aggressiveness, and are probably better than past scores would indicate. They opened with a 6-0 win over Pontotoc of the Little Ten and last week suffered a 31-6 setback at the hands of the Fulton team which Baldwin had battled to a 14-all standoff in their opener.

Coaches James Drewry and Richard Brown said the Booneville squad is in pretty fair condition for this week's game, except that guards Martin and David Moody are on the doubtful list and quarterback Hal White is still suffering from a cold and may not be able to hold out for extended duty.



A popular local band, THE PHINX, will play at the Rebel Party at Ole Miss tonight. The welcoming party for new and returning students will be held at the court house square from 8 o'clock until 12 o'clock. The group has been together for approximately 2 years and recently recorded "Some-times" and "My Baby Don't Care." The originators of the group are Mike Cunningham, lead guitar and vocalist; Perry Barrett, drummer; and Eddie Young, vocalist, all three of Booneville High School. Other members of the band are Bill Stennet, bass guitar, freshman at Northeast, Kenneth Shackelford, organ, freshman at Northeast, David Box, rhythm guitar, junior at Mississippi State and Johnny Hanley, vocalist, freshman at Arizona State University, Tempe, Arizona. Present members of the band are, left to right, Kenneth Shackelford, Eddie Young, Mike Cunningham, Bill Stennet and Perry Barrett.

Lt. Governor Of Pilot International Honored With Tea In Kemp Home

Mrs. Turner Carpenter, Lt. Governor of District Three, Pilot International, was honored with a tea in the home of Mrs. W. V. Kemp last Thursday afternoon by members of the Booneville Pilot Club.

The lovely home of Mrs. Kemp was made more attractive with the

lavish arrangements of roses and gladioli in the living rooms and garden flowers of bright yellow arranged in green foliage in the den. Throughout the house beautiful arrangements of gladioli, grown by Mrs. Kemp, were displayed.

An arrangement of large, full-bloom pink roses in a low crystal container graced the table in the foyer, where Mrs. Cliff Michael and Mrs. Hubert McDaniel, with the guest of honor, welcomed those who called during the afternoon.

The guests were ushered into the dining room where a pink refreshment table was overlaid with a handsome cloth of pink, outlined with sequins in shades of pink and apricot. The table was centered with a sunburst arrangement of roses and gladioli ranging from delicate shades of pink and yellow to the deeper tones of rose and apricot, blending perfectly. Pale yellow tapers in silver candelabra cast a glow of beauty on the silver coffee service, presided over by Mrs. Fred Houston and the silver punch bowl at which Mrs. E. O. Roden presided.

Assorted canopies, salad nuts and

Lisa Howell Has Birthday Party

On Saturday evening, September 10, Mrs. Bobby Howell helped celebrate her daughter, Lisa's third birthday with a party given in the home of Lisa's grandmother, Mrs. Lebaron Howell.

The guests enjoyed playing games after which they watched Lisa open her gifts. Favors of balloons, blow-outs, and birthday hats were given to each child.

Mrs. Wynette Kelly, Azaline Waddell, Mrs. Earl Green and Larila Roper assisted Mrs. Howell in serving refreshments of cake, ice cream, potato chips, and Kool Aid to the guests.

Seven out of 10 new homes today have three bedrooms.



TEA HONORS PILOT LT. GOVERNOR — Mrs. Turner Carpenter, Lt. Governor of District Three, Pilot International was honored at a tea Thursday afternoon by members of the Booneville Pilot Club in the home of Mrs. W. V. Kemp. Shown left to right are: Mrs. Clyde Carter, Mrs. Ebbey Moore, Mrs. Robert Buchberger, Mrs. Dewey Martin, Mrs. James Tigrett, Mrs. E. O. Roden, Mrs. Fred Houston, Mrs. Webster Cleveland, Mrs. Carroll Yarber, Mrs. Norman Fulper, Miss Sue Kimbrell, Mrs. Carpenter; Mrs. Cliff Michael, Mrs. Gerald Hodges, Mrs. W. V. Kemp, Mrs. O. C. Robinson, Mrs. Oswald Pounds, Mrs. Clifford Kizer, Mrs. Albert Feldman, Mrs. L. W. Peeler and Mrs. Hubert McDaniel.

dainty sweets were served from silver trays. Members of the Club assisted in welcoming the guests.

Kent Hisaw Observes Seventh Birthday

Kent Hisaw was honored with a birthday party celebrating his 7th birthday Sept. 7 at the City Park. Kent is the son of Mr. and Mrs. William Hisaw.

At the party the young guests were entertained by riding the boats and train, a big attraction to all children who come to the park. The boys and girls then were served cokes, ice cream and cake. The delicious cake was a gift baked for Kent by Mrs. D. W. Presley. Fa-the Hi-Lo Dollar Store in Booneville included hats, candy, and whistles.

Kent's guests were Sherry Wilson, Denise Geno, Sandy Davis, Tim Harris, Scott Cole, James Hurst, Cindy Kelson, Phillip Copeland, Mac Mitchell, Terry Nunley, Lenae Nunley, Nickey Owens, Beth Brown, Nancy Grisham, and Julie Burress.

At the party Kent received many beautiful gifts from his guests.

Cornell University is at Ithaca, N. Y.

Rhode Island is only 1,214 square miles in size.

D. T. Beall Chapter Of U.D.C. Has Sept. Meeting In The Robertson Home

The D. T. Beall Chapter, United Daughters of the Confederacy met Wednesday evening, September 7th, in the beautiful home of Mr. and Mrs. Harold Robertson.

The living room and dining area were made more attractive by seasonal flowers from the hostess' yard. Especially lovely was an arrangement of yellow roses in the center of the table. Mrs. Robertson and Mrs. Leland Billingsley, joint hostesses, served a delicious dessert plate and coffee to the members during the social hour.

After the pleasant informality of the evening, the president of the Chapter, Mrs. L. L. Downs, led the members in a pledge of allegiance to the United States Flag and a salute to the Confederate Flag. The ritual which is a prayer of thanksgiving for their noble Southern heritage and a pledge of allegiance to the principles of the Confederacy was recited.

After a short business meeting, certificates of membership were awarded Miss Phyllis Hare and Miss Martha Riddle.

The speaker for the meeting was Mrs. Clarence Chase, who gave a short resume of the part the Southern chaplains played in the War Between the States as well as their work during the trying period of Reconstruction. Mrs. Chase pointed out the fact that it was passingly noticeable that the men of peace, when confronted with a duty to their God and their country, made brave, fearless soldiers. She also pointed out that out of the Confederate Army came more than 150,000 converts to Christianity. This had never been the case in

any war fought by our nation. In the beginning of the War Between the States the churches suffered of all faiths, but by the time the Confederate bugle call sounded "Dixie" there was a clear sectional division in the clergy of all faiths. Almost to a man the Southern Clergy rallied to the call to duty and the South's churches felt that the Confederate cause was the responsibility of the church. Mrs. Chase said that the remarkable loyalty of not only the clergy but the soldiers of the South was that they felt the oneness of their loyalty to God, and their responsibility to the principal for which the South was fighting on God's side and that with the spiritual aid they could not lose.

The speaker pointed out that the remarkable fortitude of the defeated South was directly traceable to the spiritual fortitude of the Southern soldier of Christian faith. Mrs. Chase pointed out that to the chaplains and the ministers of the many faiths the South will ever be indebted because it was their influence that aided the Southern States in weathering the financial, social and economic crisis that followed the war. It was the religious faith of the Southern people that raised a broken section of the country to the high economic status that we of the New South enjoy.

The meeting was most instructive as well as pleasingly enjoyable. The members of the D. T. Beall Chapter are enjoying more than 50 years of active participation of perpetuating the memory of the soldiers of the Confederacy.

Hospital Notes

Patients discharged from North-east Miss. Hospital September 6th through 13th:

Lewis, Wilma Faye
Nix, Linda Faye
Nix, Baby Boy
Hatfield, Wm. Robert
Sanders, Mattie Belle
Campbell, Baby Boy
Campbell, Jewell
Chase, Regenia Lynn
Chase, Linda Sue
Murphy, Donnie Dirik
Smith, Buster Ray
Wilemon, Columbus Willard
Johnson, Bonnie Smith Lee
Key, Lula Mae
Tennison, Rusoleen
Jannison, Annie
Taylor, Martha
Claunch, Guy Truman
Livingston, David Ray
Lindley, Janet Lynn
Hester, Hattie Florence
Hall, Lillie Marie
Stockton, Sam Sephus
Polk, Ernest Edgar Jr.
Hines, Katherine Ann
Pierce, Martha America
Henderson, Perry Lee
Padgett Baby
Bann, Sally Elizabeth
Smith, Kizzie Ann
Rinehart, Sylvia K.
Lovell, James Columbus
Baldwin, Dorothy Sue
Michael, Charles Wayne
Hunt, Flossie
Woodard, Ellis
Brown, Sarah Elizabeth
Pardue, Jewell Ione
King, Rhonda Elaine
Wigginton, Barbara Jean
Barnes, Billy Reed
Garner, Mary Frances
Jackson, Archie Belle
Glover, Brown Lee

Horton, Clara Ann
Green, Luther Homer
Hatcher, Ivan
Elder, Maude Fay
Counce, Mattie Leonora
Ivey, Vivian Pearl
England, Annie Norris
Ashcraft, Leland
Winfield, Betty Wade
Nanney, Dexter Melvin
Winfield, Daniel Price
English, Sam Frank
Radliff, Ruby Nell
Grisham, Peggy Jean
Grisham, Baby
McCombs, Lessie Ree
Gullett, Annie Beth
Reeves, Jewell Elaine



For as he thinketh within himself, so is he.

— (Prov. 23:7)
In life we always find what we look for and if we look for something beautiful in any circumstances we shall find it. In a sense, our happiness is in our own hands, because it is not what happens to us but how we react that is important in our experience. We suffer only when we resist something in our life. This is the cause of pain, and so the secret is to embrace the Spirit of God in everything.



DISCOVER EMERALD MOUND — This dramatic relic of an unknown Indian pre-civilization is located on the lower end of the Natchez Trace, about 12 miles north of Natchez. It's the third largest temple mound in the U. S., covering nearly eight acres. Emerald Mound dates back through six centuries, and can be visited free today by travelers along the Trace. "Discover Mississippi" for yourself this year by taking a trip to fabled Natchez country, and the southwest end of the Natchez Trace.

BOB GRISHAM'S
Dixie Dandy
FOOD STORE

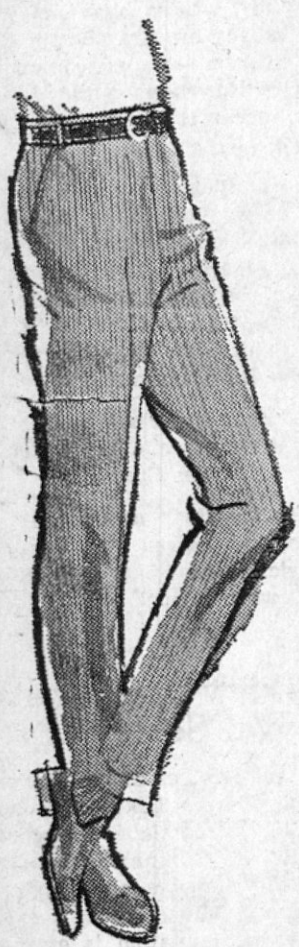
CHECK THESE PRICES WITH ANYBODY

Miss Dixie Belle Gift Stamps with all purchases. You can redeem these stamps in Booneville, Miss.

OPEN EACH NIGHT UNTIL 9:00 O'CLOCK

BACON	Nu-Kris	lb. 69c
CHICKEN BREASTS		lb. 49c
CHICKEN BACKS		3 lbs. 39c
Sirloin Steak	Choice	lb. 79c
STREAK-O-LEAN		lb. 49c
ROUND STEAK	Choice	lb. 79c
ICE MILK	Borden's Royal Crest	1/2 Gal. 59c
ICE CREAM	Borden's New Caramel Pecan Crunch	1/2 Gal. 79c
GINGER ALE		28 oz. 29c
SOUP	Tall Boy 19 oz. Vegetable or Tomato	2 Cans 39c
Chicken & Dumplings	Sweet Sue	24 oz. 51c
SUGAR		10 lbs. \$1.05
Instant Pudding	JELLO	2 Boxes 29c
DOG FOOD	Twin Pet	3 Cans 23c
SUNGOLD OLEO		5 lbs. \$1.00
CRISCO		3 lbs. 86c
INSTANT COFFEE	Maxwell House	12 oz. \$1.39

WE'VE GOT... ALL KINDS OF PANTS



Just Arrived...
NEW TROUSERS GALORE

at

GRAY'S

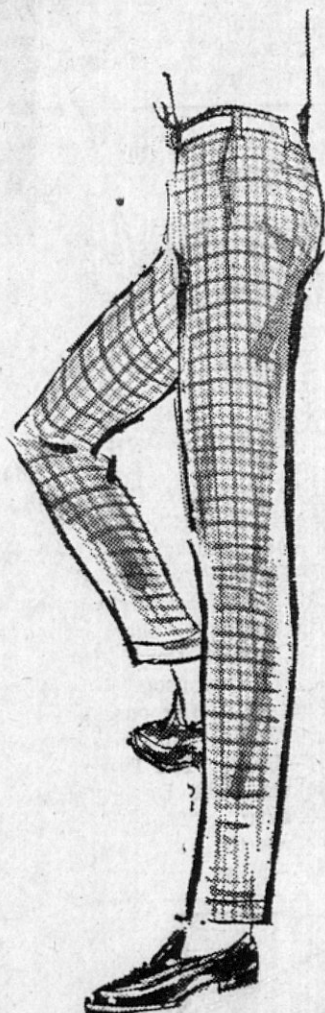
Brush Denim - Beautiful Plaids
And all the New Colors in Mods.

Never Need Ironing Shirts To Match

Come To Gray's For The

Newest In Young Men's Styles

GRAY'S





MR. AND MRS. EDWARD OWEN MILLER

Mr. And Mrs. Edward Owen Miller Pledge Marriage Vows In Home Ceremony Sept. 3

Mr. and Mrs. Edward Owen Miller were married September 3, in the home of the bride's parents, with the father of the groom, Rev. W. T. Miller, Sr., of Gulfport, officiating.

The parents are Mr. and Mrs. Dewey Martin of Booneville and Rev. and Mrs. W. T. Miller, Sr., of Gulfport.

Music was presented by Miss Susan Simpson, pianist; Miss Nancy Bettersworth and Mr. Joe Ray Underwood, soloists. Mr. Underwood sang, "One Hand, One Heart" and Miss Bettersworth presented, "Whither Thou Goest."

The spacious living room was decorated with candelabra holding sunburst tapers and a single huge basket of sunburst gladioli. Miss Debbie Keeton, cousin of the bride, greeted the guests in the entrance foyer as they arrived.

Throughout the home arrangements of yellow fugli mums, roses and gladioli were placed to add to the beauty of the occasion.

The bride was escorted by her father who gave her in marriage.

Her gown was of candlelight crepe and accented with a cape of candlelight imported lace designed by the bride and fashioned by her mother. The lace cape bodice featured a scoop neckline, falling to the waist line and a short train in the back over a floor length crepe gown. Her short illusion veil was caught with a lace bow matching the bodice of her gown. She wore a single string of pearls, a gift of the bridegroom. Her bouquet was of white Phalaenopsis orchids with stephanotis and English ivy.

Miss Mary Clyde Prichard of Booneville was the maid of honor; Miss Linda Martin was the bridesmaid. They wore floor length dresses of mint green silk chiffon, with matching headpieces. They carried bouquets of fugli mums and poms with cocculus foliage.

The groom's brother, W. T. Miller, Jr., of Baton Rouge, La., served as best man. Mr. Joe Ray Underwood of Corinth was groomsmen.

The bride's mother wore a three-piece off-white brocade suit, fashioned by Henry Lee. Her accessories were bone and she wore a single Phalaenopsis orchid corsage.

The groom's mother wore a one-piece dress of pink crepe. Her accessories were pink and she wore a single Phalaenopsis orchid corsage.

The out-of-town guests were Mr. and Mrs. W. T. Miller, Jr., of Baton Rouge, La., Coach and Mrs. Ben Jones of Fulton, Miss Susan Simpson, Mr. Jimmy Squires of Kosciusko, Miss Nancy Bettersworth, Mr. and Mrs. John Edward Keeton, Kim and Debbie of Starkville, Miss Daphne Clifton, Miss Camilla Wilson, Mr. Joe Ray Underwood of Corinth, Miss Billy Lane Williams, Mr. and Mrs. R. E. Russell of State College, Mr. Henry Lacey of Holly Springs, Mr. and Mrs. Kimble L. Bolen of Columbus, Mr. and Mrs. Joseph Neil Walden of Nashville, Tenn., and Mrs. Jerry Davis of Carversville, Ga.

RECEPTION

Following the wedding, the parents of the bride entertained with a reception on the patio of the home of Mr. and Mrs. E. O. Roden on Franks Road. The large swimming pool was outlined with topiary trees and yellow satin ribbon. Floating in the pool was a large quarter moon surrounded by stars decorated with yellow net, flowers and burning candles. Two large tables covered with yellow net table cloths held the beautiful three-tiered wedding cake and silver punch bowl.

Mrs. E. O. Roden greeted each guest at the head of the receiving line. Mrs. H. G. Ewell and Mrs. Allan Norton served the cake. Mrs. Mildred Elder and Mrs. Harold Prichard served the punch. Mrs. Fred Houston, Mrs. L. W. Peeler, Mrs. Paul Howell assisted with the serving.

Mrs. John Keeton, Mrs. Jimmy Keeton and Mrs. Kimble Bolen were in charge of the tea girls, who were Miss Carolyn Walden, Miss Barbara Olive, Miss Camille Wilson, Miss Billy Lane Williams, Miss Daphne Clifton, Miss Gloria Dixon, Mrs. Jerry Davis, Mrs. Mary Ethel Russell, Miss Debbie Keeton and Mrs. Wayne Carr. Mrs. John Myska was in charge of the two little rice girls, Miss Kim Keeton and Miss Cindy Myska.

Mrs. W. T. Miller, Jr. and Mrs. Joseph Neil Walden, Jr. presided over the register.

Mrs. Miller wore for her going away outfit a fitted dress in plum with a matching jacket fashioned by her grandmother, Mrs. J. L. Keeton, Sr. Her accessories were tan, accented with black lizard.

After a short wedding trip, Mr. and Mrs. Miller will live at Ole Miss, where Mrs. Miller is secretary to the assistant Dean of Pharmacy and Mr. Miller is a student in the School of Law.

DINNER PARTY HONORS

DIANE MARTIN

Mrs. Jerry Davis honored Diane Martin, bride-elect of Edward Owen Miller, with a dinner in the home of her mother, Mrs. Mildred Elder on Thursday night, September 1.

The buffet style dinner was served by candlelight. Each table held a lovely arrangement of pink flowers and a candle. Each place was marked with a pretty white and pink place card.

After the meal, the guests enjoyed an evening of conversation. Mrs. Davis and Mrs. Elder presented the bride-to-be with a lovely yellow bathroom set. Miss Martin's gift corsage was of white carnations.

MISS MARTIN HONOREE AT LUNCHEON

Diane Martin, bride-elect of Edward Owen Miller, was honored with a luncheon at the Town Motel by Miss Mary Clyde Prichard and Mrs. Harold Prichard at noon on September 3.

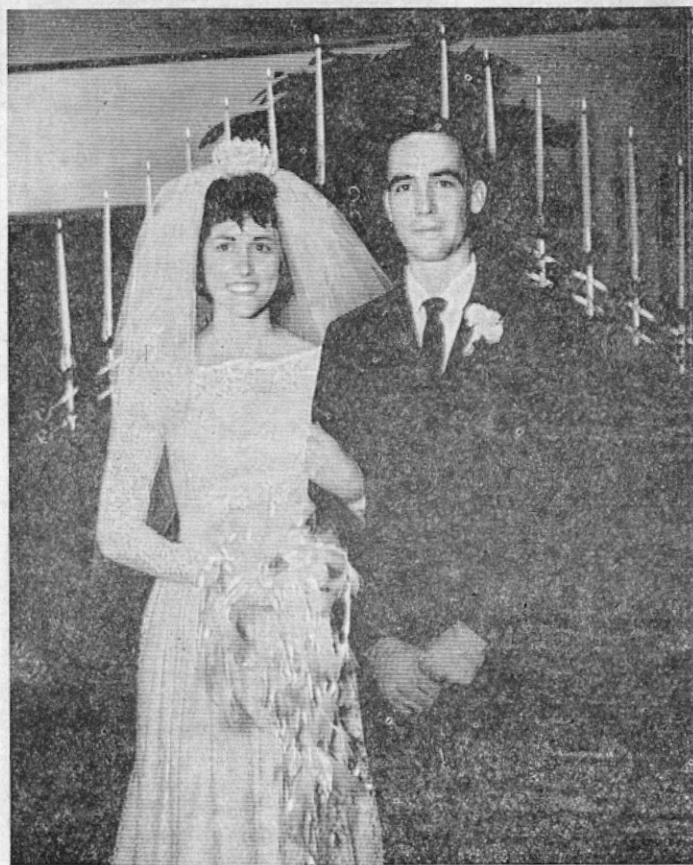
The T-shaped table was covered with white linen and accented with an arrangement of yellow roses, mums and foliage. Dainty white place cards were used.

The honoree wore a fall brown linen one-piece dress by Country-Set for the luncheon. She was presented a corsage of white gladioli by the hostesses.

After a delicious meal, Miss Prichard presented the bride-elect with a plate in her china.

DIANE MARTIN, EDDY MILLER HONORED AT PARTY

Mr. and Mrs. Emmitt Wayne Carr entertained with a bride and groom



MR. AND MRS. JOHNNY McDUGAL

Miss Janet Green Becomes Bride Of Johnny McDougal In Lovely Ceremony

Miss Janet Green, daughter of Mr. and Mrs. Carl Green, became the bride of Johnny McDougal, son of Mr. and Mrs. James McDougal, Saturday, September 3 at 7:00 p. m. Vows were exchanged in the Snowdown Church of Christ. The double ring ceremony was performed by Bro. Jim Archer.

The candlelight ceremony was performed before a setting of greenery, which consisted of small green palm trees. The center of the background came to form a peak under which rested a basket of pink roses. The scene was lighted by pink tapers.

The bride, given in marriage by her father, was radiant in a traditional white gown of satin overlaid with chantilly lace. The bodice was finished with a scalloped neckline and long tapered sleeves that ended in delicate points over the wrists. The skirt fell gently into a chapel train. Her elbow length veil

party in honor of Diane Martin and Eddy Miller Friday night, September 2, in the home of Mr. and Mrs. E. O. Roden.

After a large group of friends arrived, games were enjoyed. Bride Bingo was played and all the prizes were given to the couple. Mrs. Roden and Mrs. Carr served cookies, nuts, sandwiches, and cokes to the group.

After enjoying the refreshments, the group sat in the living room singing folk songs and talking. Music was furnished by Joe Ray Underwood, Eddy Miller and Miss Nancy Bettersworth.

Miss Martin was presented a corsage by the hostess and also a basket of gift items for her kitchen.

On The Local Scene...

Mrs. L. A. Rogers and two children have returned to their home in Los Angeles, Calif., after a three weeks visit here with her parents, Mr. and Mrs. C. F. Morton. Mrs. Rogers is the former Bettye Anne Morton of Booneville.

Woman's Club Opens Its 45th Year With Special Program At Home Of Mrs. Turner

The Booneville Woman's Club began its 46th year with the September 8th meeting Thursday afternoon. Mrs. Emmons Turner, Jr., Mrs. Emmons Turner, Sr., Mrs. Taylor Smith and Mrs. Charles Vail, serving for Mrs. Stewart Vail, were hostesses in the Turner home on Wildwood Drive. Mrs. Webster Cleveland, Jr., presided over the meeting.

No citizenship can rise higher than the ideals of its womanhood. Purity of character, intelligent thinking and sympathetic action are the heritage of the womanhood of Booneville.

The Woman's Club has set the standard of achievements high. They have inspired others to work with them toward their goal. Their ambitions are laudable. The momentous question with them has been, "Is there a task to perform to make Booneville a better city in which to live?" They have only asked opportunity to perform that task. How well they have wrought is found in their record of achievements and their contributions to the life and character of the city.

Mrs. Taylor Smith directed the program on the General Federation. The title was "Know Your Federation." Mrs. Ed Johnson gave statistics showing when the first

international clubs were formed and the number of clubs in foreign countries today. Mrs. Henry Mize told of the major accomplishments of the federation while discussing her subject "Climbing Steps." She designated the bottom step as the major achievement and the top step as a challenge for higher aims. While relating the fascinating history, Mrs. J. W. Abernethy told that the first club in the United States was organized in Delaware in 1818. It was of interest to learn that the first federated work was organized in 1889 with Mrs. Charlton Brown as the first president. In 1889 Mrs. Climber was the first to quote the club motto, "In Unity There Is Diversity."

Lovely fall flowers enhanced the beauty of the home. An outstanding arrangement in the hall, a symbol of the autumn season, was designed with the fruit of the flowering quince and sprays of orange pyracantha berries.

A delicious salad plate with sandwiches and coffee was enjoyed during the social period.

The entire membership was very pleased that Mrs. Emmons Turner, Sr., was at the meeting and showing so much improvement following her illness.

Business And Professional Women's Club's Program Presented By Members

The Business and Professional Women's Club met in the Town Motel Restaurant September 8th with Mrs. Billy Hester, vice-president, presiding in the absence of Mrs. Jerry Floyd, president.

The tables were beautifully decorated by Mrs. Mae Smith and Mrs. Ruby Lee Brown with fall flower arrangements, birds and apple cutouts, significant of autumn and the back to school month of September.

Mrs. Bell Hall gave the invocation. The program theme for the month was "Careers For Women."

Mrs. Mildred Anderson, Program Director, discussed the importance of the choice of a career and how many jobs are available at this time.

She then introduced club members. Mrs. Malcolm Carter, Mrs. Mark Johnson, Jr., Mrs. Billy Hester, Mrs. Joe Ray Langston and Mrs. Hale Aust, who each discussed a topic of interest to those

choosing a career. Mrs. Carter discussed briefly the importance of a good personality in any career and Mrs. Johnson told of the advantages a career in city planning would offer a young person. The topic, "Beauty," was presented by Mrs. Hester. She pointed out the advantages and disadvantages of a career in cosmetology. Mrs. Langston challenged the club to choosing a career in the purchasing field and Mrs. Aust so ably discussed the interesting career of fashions.

During the business session, the Queen of the Forest Contest date was set for October 25th, to be held at the Northeast Mississippi Junior College. Mrs. Clyde Jones announced the District Meeting date for the Federation of Business and Professional Women's Clubs for October 9th at Oxford and all members were urged to attend.

The meeting was adjourned after

GUILD THE CORNER



The Wesleyan Service Guild will meet at the home of Mrs. W. V. Kemp, Sept. 19 at 7 p.m. All members are urged to be present to discuss plans for the coming year.

Pearl Caldwell Circle Meets In Home Of Mrs. Ethel Hanley

The Pearl Caldwell Circle of the First Baptist Church met Monday in the home of Mrs. Ethel Hanley with nine members present. Mrs. Grace Maxwell, Chairman, opened the meeting and asked Mrs. Blythe to give the devotional. Mrs. Blythe led in prayer for the missionaries.

Mrs. John Curlee gave the last chapter of the book, "Great Is The Company," which the Circle is studying at this time.

This being the last meeting of the church year, Mrs. Joe Fugitt led in prayer, giving thanks for the little good and joy the members had enjoyed this year, and praying that the members would do better this coming year as each one lives and goes separate ways.

Mrs. Nelson Baldwin gave the financial report. Each member gave a gift for Christmas in August, a nice selection of gifts being displayed.

Mrs. Hanley, assisted by Mrs. Baldwin, served delicious cake, whipped cream and hot coffee.

Charles W. Roberts In Southeast Asia

SAIGON, Vietnam — Technical Sergeant Charles W. Roberts, son of Mr. and Mrs. Ruble L. Roberts of R.F.D. 1, Baldwin, Miss., is now on duty with the U.S. combat air forces in Southeast Asia.

Sergeant Roberts is assigned to a forward combat base as a jet aircraft technician.

The sergeant attended Jericho High School at Guntown, Miss.

His wife, Shelby, is the daughter of Acker Hatfield, R.F.D. 2, Booneville, Miss.

The reading of the Club Collect by all members.

Hottest Tire Buy of the Year

GOOD YEAR Thunderbolt

\$18.50

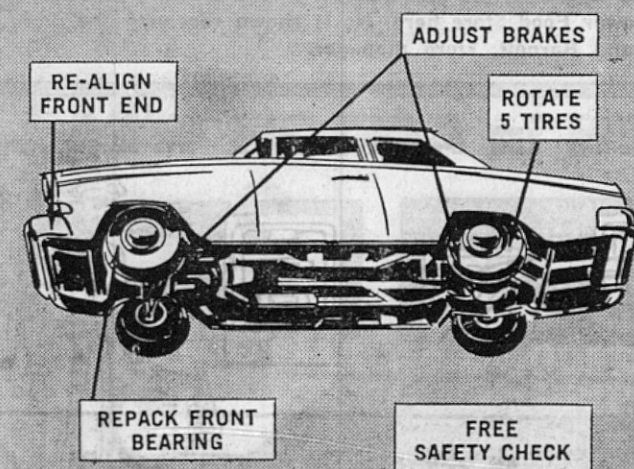
6.50 x 13 Black tubeless Plus \$1.83 Fed. Ex. Tax. No trade needed.

- A. J. Foyt—past winner Indianapolis "500" and dozens of other top races drove a stock race car under race conditions 500 miles at 120 mph on Thunderbolt tires.
- Built with 4 plies of extra-strong 3-T nylon cord and Tufsyn rubber for extra mileage
- Built to deliver extra traction rain or shine

Size Black Tubeless†	Price*	Fed. Ex. Tax
7.00 x 13	\$19.38	\$1.90
7.35/7.75 x 14 (7.00/7.50 x 14)	\$21.48	\$2.20
8.25 x 14 (8.00 x 14)	\$23.40	\$2.36
8.55 x 14 (8.50 x 14)	\$25.83	\$2.57
7.35/7.75 x 15 (6.50/6.70 x 15)	\$21.48	\$2.21
8.15/8.45 x 15 (7.10/7.60 x 15)	\$25.83	\$2.55
8.85/9.00 x 15 Whitewall (8.00/8.20 x 15) tubeless only	\$33.91	\$2.78

*Plus tax — No trade needed.

Whitewalls also available.



Goodyear Vacation Services

We put your car in shape for just **\$9.95**

We'll re-align front end, make 4-wheel brake adjustment, add brake fluid, clean, repack and readjust front bearings, rotate 5 tires, free safety check. Price for any U.S. car. \$2.00 Extra for torsion bars or air conditioning.

GO GO GOODYEAR
THE SAFETY-MINDED COMPANY

GOODYEAR SERVICE STORE
Booneville, Miss.

Phone 728-6276

OUTSTANDING VALUE!



STYLE B SPINET
meLOdiGrand

\$449.00

Don't put off giving your family the benefits of music. With today's meLOdiGrand, you can enjoy a fine, new piano for less than you would expect to pay for a used one.

And unlike other budget priced pianos, meLOdiGrand itself designs and makes each of 6,000 vital parts. Result? Beautiful voice, professional touch that you can see and hear for yourself.

PATE'S
T.V. & APPLIANCES

First Street -- Booneville
Phone 728-5959

KEMP'S Super Market



LOWER PRICES - Plus United Stamps For FREE GIFTS
OPEN UNTIL 7:30 EACH NIGHT

FRANKS BOLOGNA FRYERS

Purnell Pride

CHICKEN BREASTS

lb. 55c

Armour's Boneless **PICNICS** Cut 'n Eat

MORTON'S FROZEN FRESH

MACARONI and CHEESE, 20-oz.

39c

SWEET PEAS, Libby 10 oz.

2 for 35c

PEPPERIDGE FARM

BLUEBERRY STRUDEL, 14 oz.

59c

ICE MILK, Borden's Royal Crest, 1/2 Gal.

65c

APPLE JACKS, Kellogg's 6 1/2 oz.

39c

CAKE MIX, Jack Sprat

Box 29c

BEANS, Bush, Great Northern, 303 Size

10c

SPAGHETTI, Bush, Show Boat, 303 Size

10c

KRAUT, Bush, No. 1

10c

SELF POLISHING WAX, Bruce, 1 qt.

97c

FAB, Gt.

69c

BOLD, King Size \$1.10

TISSUE, Blue Ribbon,

4 Rolls 34c

BANANAS

lb. 10c

MUSTARD GREENS

lb. 15c

CARROTS

CELLO PACK

10c

JUST RECEIVED

Fresh Shipment of Tulip Bulbs, Crocus, Hyacinth and King Alfred Daffodils.

The Banner Independent

"Over Half a Century of Service to Prentiss County"

Consolidated October 31, 1957

The Booneville Banner, Est. 1898 — The Booneville Independent, Est. 1923
TELEPHONE 728-5079

Entered as Second Class Matter at the Post Office at Booneville, Mississippi, under the Act of Congress of March 3, 1879.

SUBSCRIPTION RATES —

In Prentiss, Itawamba, Tishomingo, Alcorn, Tippah, Union, and Lee Counties.
1 year—\$3.50 6 months—\$2.00 2 years—\$6.00
Outside the above area:
1 year—\$5.00 6 months—\$3.00 2 years—\$8.50

Published each Thursday by the Booneville Printing Company, Booneville, Mississippi.
OWNER & PUBLISHER WILLIAM E. (ED) JOHNSON

Guaranteed Destruction

Supporters of the idea that the federal government should provide a guaranteed annual personal income are no longer just talkers but full-fledged promoters.

So far, the advocates of a government allowance are campaigning on the premise that it would do away with poverty. They reason that since poverty is essentially caused by the lack of money, giving everyone an income on which to live will help cause poverty to go away.

It is one thing to say poverty will go away when everyone is guaranteed a specific income. But, it is quite another thing to overcome the economic reality that it would not work. Those who advance the theories of giving something for nothing overlook one simple fact: the government can only give to the people what it first takes away from the people. And the amount of additional taxes necessary to sustain a guaranteed dole for everyone and the accompanying inflation that would result would be enough to bankrupt the United States. A great many more citizens classed as "poverty stricken" would be the unfortunate by-product of a guaranteed dole as dependency replaced self-reliance in the United States.

History supplies ample proof that no theory has ever provided more moral and material rewards for the poor than is available through U. S. freedom of opportunity.

★ ★ ★ ★ ★

No Guns For Wrong Persons

"Quick enactment" of federal gun-control laws has again been urged by President Johnson in the immediate aftermath of a shooting in his home state. The object, so he said, is to "help prevent the wrong persons from obtaining firearms." There's no denying that the wild spree of an apparently demented gunman at Texas University was a grim and sorrowful event. But by what stretch of whose imagination can it be concluded that a federal law covering the sale of rifles, shotguns and handguns have prevented it, or that passage of such a law now will really prevent similar tragedies in the future?

The primarily emotional character of this new surge of "anti-gun" activity—in other places besides the White House—is demonstrated by both the similarities to and differences from that which followed the assassination of President Kennedy in Mr. Johnson's home state 3 years ago. The chief target, or focal point of the anti-gun crusaders then was "mail-order" guns. (Remember all those pictures and cartoons?) This time the picture is of several weapons and the comments generally stress the fact that the sniper had a veritable arsenal with him; without nearly so much emphasis on

how he obtained the weapons. Which really proves, when logic prevails over emotion, that how or from whom a gun is obtained has nothing at all to do with how or to what purpose it will be used.

We realize that from his standpoint as a politician, Mr. Johnson may be quite shrewd in trying to ride the crest of this new wave of anti-gun emotionalism. But we think it demeaning of his present office that he would do so. And as a former member of what has sometimes been called "the greatest deliberative body in the world" (the U. S. Congress), the President surely realize the dangers to long range national interests and to constitutional government when laws are passed hurriedly in an atmosphere of emotionalism.

We do approve the President's expressed desire to "help prevent the wrong persons from obtaining firearms." But we think this could be done on the home front by lesser officials than he, through better enforcement—in the courts as well as in the streets—of the many federal, state and local statutes already in existence. That would allow Mr. Johnson, in his capacity as Commander-in-Chief of our Armed Forces, to concentrate his thoughts and efforts toward that same worthy purpose in places like Viet Nam.

Local Business

By R. E. TALBERT
Chairman, Dept. of Journalism
University of Mississippi

Independent merchants in a new suburban community recently banded together to ask a large chain department to move into their midst as a competitor.

The move was made with the knowledge that local trade activity is self-escalating. Rather than being a threat to existing enterprises, the big store provided a core for the shopping center.

Full-scale newspaper advertising of the department store had a beneficial secondary effect on every shop in the local community. It caused people to stay at home.

The store which creates new business in a community is never the sole benefactor of its own advertising and promotion. Women may be one-stop shoppers, but they rarely are one-store shoppers.

The woman who travels to a metropolitan center to look at a dress which has been advertised in a regional publication may buy everything from groceries to furniture while on the trip.

A similar process of shopping takes place in the local community when the advertising of local firms keeps shoppers at home.

Every retailer knows that consumers lose time and money by traveling distances to buy. This truth is not self-evident to many consumers.

The consumer buys in terms of self-interest from information which is available. And, when local merchants fail to provide information which will cause consumers to remain at home, business inevitably moves to better publicized centers.

Wheeler Extension Homemakers Meet

On Wednesday afternoon, Sept. 7 at 2 o'clock the Wheeler Extension Homemakers Club met in the home of Mrs. Bun Grisham.

The president, Mrs. Willie Moore called the meeting to order. The group repeated the pledge to the Christian Flag. The song for the meeting was "The More We Get Together." The devotion was given by Mrs. Willie Moore, followed with prayer by Mrs. Callie Bruce.

After a short business session, Mrs. Miller gave a garden report. An interesting Study Topic on Alcoholism was given by Mrs. Moore.

Mrs. Effie Spain gave a report on Yard Beautification. The demonstration was on Selecting, Framing and Hanging Pictures.

Refreshments were served by the hostess, assisted by Mrs. Spain. Eleven members and one visitor were present.

The next meeting will be in the home of Mrs. Carl Greenhaw.

Editorial Comments

By DR. W. H. ANDERSON

HOSPITAL HONOR

The Northeast Mississippi Hospital and the people of Booneville and Prentiss County should be proud of our administrator, B. G. Horton. He has now the distinct honor of being president of the Mississippi State Hospital Association. This is a fine asset to our hospital and our community. B. G. is a well-informed administrator who tries to be fair to one and all alike. In the August issue of SOUTHERN HOSPITALS is his good and sensible article entitled, "Visitor Control is a Part of Good Patient Care." Visitors may well constitute a problem to some extent. Some have just not stopped to think how they can help best; most want to see the very best hospital service that can be had. The service and the atmosphere in our hospital in general is mighty good. This is important. It gives the patient a lift and activates courage. Our nurses and hospital officials as a rule are very kind and strive to please and to serve. It takes individual attention to the individual patient oftentimes to oil hospital service and make it run smoothly. A sincere desire to serve by all hospital officials goes a long way. In this respect we think our hospital is high up on the list. For a half century this institution has been a hospital leader for Northeast Mississippi. It now has in it about two and a half million dollars and the new wing is not to be surpassed anywhere. The adjustable electric beds furnished by the American Seating Company are bringing much favorable comment in addition to the elegant sound proof rooms. The last sentence in Administrator Horton's article is mighty good: "Let's make good visiting a part of good patient care!" The people will respond to this request.

In our appreciation of Mr. Horton we should not forget the services of Charles W. Flynn, the Health Association executive. He is able and dedicated in the field of hospital service to the people and has served in many fields in the interest of better service to the hospital and in turn to the people. A native of Connecticut, Mr. Flynn has adopted Mississippi as his home state after a hitch at Camp Shelby in Hattiesburg. He also married a Mississippi girl, and is an honor graduate of Mississippi State University. We appreciate and thank him for his service to our hospitals and to our state.

NAMES REMEMBERED

Miss Annie Pounds has not been quite so well for the last few days. She lives at the Pounds home about two miles beyond New Site. The Pounds family has been quite outstanding in Prentiss County for many years and we think that she and Mrs. Barty Moore are the only two left of the original family. Miss Annie lives in the old home. Everyone knew Seth Pounds and his name is yet sacred to many. He was outstanding as a teacher, business man and banker. For many years he was a leader for every good cause for Booneville and Prentiss County, and was considered one of the ablest bankers in North Mississippi. Even yet he is greatly missed.

SORGHUM SWEETS

The new and up-to-date sorghum mill up north of town by the pig sale barn is grinding out the juice now. Henry Pounds got a sample of the finished product and he pronounced it right good — not quite up to some of the OLD experts, but he thinks when the mill gets well under way the molasses is going to be all right. This is said to be the most modern mill anywhere and may prove to be a great financial asset, Prentiss County might take the lead for this produce nation-wide.

NATURAL SLEEP THE BEST

The nembul is counted to be a good sleeping capsule, but there is no doubt that people are taking too many. When it was raining hard the other night we were asked for a substitute for the little capsule so he "would not get on the habit." If a man works hard all day, sleeps in a room with a tin roof and no ceiling, has a reasonably good bed and gets on it with a pretty clear conscience and closes his eyes — he will surely go to sleep without a nembul. It will be a joyous sleep and no hold over the next day.

WONDERFUL NIGHTS

In driving over Prentiss County one cannot help but note nice, new houses everywhere. You can't tell winter from summer except by the budding of the trees, and one can hardly tell country from town except by the bigness of the lot. The nice, new houses are modern in every way — they are pretty on the outside and have the conveniences of heat, water, lights, and bath fixtures on the inside. The carport makes it possible to get from the car to the house without getting wet or cold. Almost every house in the county has electricity; gas and deep well water are on their way. Television, radio, and the newspaper and magazine furnish information from around the world. If someone has



From left to right are: Col. Harry Jones and W. C. Eaker, instructors in Social Studies at the Northeast Mississippi Junior College and Freshmen Joan Holland, Burnsville; Peggy Frederick, Burnsville; and Scott Gooze, Myrtle, who are registering for the fall semester.



Mrs. James Mann, the former Miss Nellie Moore of Jumper-town was honored September 2 with a miscellaneous bridal shower given in the home of Mrs. Sam Jumper. Left to right are Mrs. Mann, honoree, Miss Renatta Strickland, Mrs. Leista Strickland and Mrs. Paulette Brackeen, hostesses.

an idea valuable to the world, these facilities can carry it to this and other nations before the next day. No man lives unto himself now or should. Progress is on the march and the rate is very rapid.

What has enabled us to have the modern homes all over the county? The dairy business has been one cornerstone and is becoming more profitable as the months and years go by. So many people do not have a cow and so many will not milk a cow night and morning. The many new homes in Prentiss County may well be traced to our diversified farming and our fine balance in agriculture and industry. We have the asset of good factories that have brought with them other fine people from all parts. The vision, ingenuity and wit of some local people have been a big boost to us, and we are now quite ready to balance local and private industry with the fine facilities that are coming in. To keep up the progress and the growth that we have on the way, we must do our best. We must still remember that good roads and adequate, quality education are necessary cornerstones for better living and financial security.

COMMUNITIES ON THE MOVE

The developments down at Marietta have been wonderful for the last two or three years, developments in industry, education and business in general. Now we hear the harbinger of industrial development out in the Blackland community. We understand that a furniture factory is soon to be located just north of the Harvey Morris store. The young men back of this industry mean business and have vision and the means to back it up. Bill Jones, a native of Blackland is prominent in the organization. Blackland — a strip of land about six by ten or twelve miles beginning in the vicinity of the Dalton place and curving a bit to take in Wheeler, then extending to Baldwyn — is about the richest piece of soil known in this part of North Mississippi. It has proved to be a regular corn belt and excels in cotton and soy beans, too. When we add industry to this favored spot, we may expect more than average prosperity and financial security. We congratulate these men on the forward step they are taking and wish them much success.

TOO GOOD TO BE RETIRED

Not long ago we passed by the brick school building in Pisgah. Not a door was open, not a sound could be heard. We had some part in helping to secure these buildings in the WPA days. Pisgah at one time had an outstanding high school, and we understand that Commissioner Roy Adams picked up quite a bit of his learning at this school. Anyway, these buildings are too good just to stand idle. We need a factory for retired men. Perhaps one could be placed at Pisgah. The retired man is often the most dependable and is always happier if he can work and earn just a reasonable amount. We understand that there are colleges which hire only the retired teacher and that some of these, using this vast resource of experience, are among the very best. Now let's make something similar possible for the retired laborer.

JUST A THOUGHT

If all the deacons, stewards and church officials were tetotlars, the whiskey industry would have a pretty hard road, but the country could have four-lane concrete highways to travel on.

POINT OF VIEW

The Negroes would not wear the bleachers much if permitted to have their games on the college ball grounds when no one else is using it. Of course, some folks see it differently. Maybe they're like the old man who hired a hand to walk around his acres all summer and run the lizards off the fence to keep them from wearing out the rails.

BEST WAY TO ADVERTISE

The county weekly newspaper is the best medium for advertising known to man, according to the best figures.

The very best men do their best and then often make mistakes. The only man who never makes a mistake is one who is "deceased!"

The George Ed Allen boulevard from Forty-Five to the Dogwood Stand needs another layer of blacktop on it before the cold rains and winter snows set in. It is about the most traveled piece of road to be found.

"If a man compel you to go with him one mile, go with him two." Always do more than you contract to do if you want to serve humanity and get a good promotion.

"Kind hearts are more than coronets and simple faith than Norman blood."

If a man keeps mentally and physically fit, he may be worth more to human society every day he lives, even if he lives a hundred years.

Don't neglect your crops for winter grazing! Winter grazing for cattle is so important.

Mrs. Johnson had some nice bits of distilled wisdom in her column last week.

Emphysema is a disease that is taking many human lives. The cause of this lung disease is not yet fully known, but there seems to be a rather definite relation between it and cigarette smoking.

Prentiss County Saddle Club News

On September 24, 1966, weather permitting, the Prentiss County Saddle Club will sponsor its Fall Round-Up of shows.

There will be 15 classes giving men, women, and children plenty of opportunities to participate.

The show will start at 7 p.m.; entry booths will be open at 6 p.m. The first classes on schedule are Ponies and Halter classes. Be sure you don't miss your event.

In the Halter Class, the colts will be shown with their mothers. This would mean suckling colts only will be permitted in this class.

If a horse is shown in the Walking Horse Class, it will not be permitted in any Saddle Horse Pleasure Class, or vice versa.

The classes have been arranged in such a manner as to give each rider a break between events, if he or his horse is entered in more than one class.

Entry fee will be \$1.00 for each event entered. Admission will be \$1.00 for adults and 50 cents for children.

This show will be sponsored solely by the Prentiss County Saddle Club, although we have had some merchants express the desire to donate money to help. Any donations are appreciated and will be used to better the club.

We hope to have a lot of repair work done on the arena before show time. All who can help with the work, please contact some official of the club to find out what nights they plan to work.

—PCSC Reporter

Rites Today For Guy Adair

Guy Adair, born February 24, 1890, passed away Wednesday morning at the Northeast Mississippi Hospital following an illness of ten months.

Mr. Adair, who resided on Route 3, Booneville, was an outstanding leader in the Gaston Baptist Church and a noted horticulturist. He was 76.

Mr. Adair was the son of the late Hillard and Mary Jennings Adair, a pioneer family of North Mississippi. He married Jessie Maxwell on December 24, 1941 and they had one daughter, Mary Avis.

Funeral services will be conducted Thursday (today) at 3 p.m. in the chapel of Jones Funeral Home with Bro. Lamar Boothe and Bro. Harold Robinson officiating. Burial will be in the Gaston Cemetery with Jones Funeral Directors in charge.

He leaves his wife, Mrs. Jessie Maxwell Adair; a daughter, Mrs. Mary Avis Settle of Biggersville; two sisters, Mrs. Terry Dandridge of Booneville and Mrs. Wister Breedlove of Tupelo; three grandchildren, Raymond, Evelyn and Ed Settle of Biggersville.

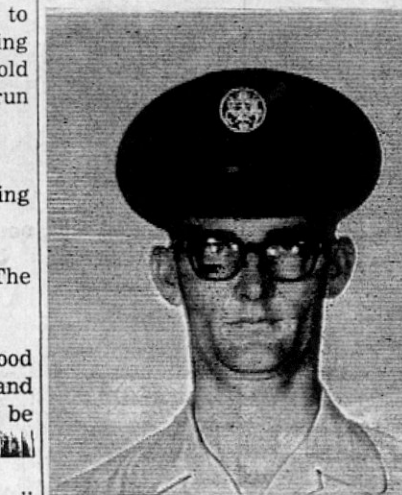
Honorary pall bearers will be Thomas Berryhill, Bob Doss, Edgar Bolton, Vance Jones, Neal Thompson, and Burnis Morris. Active pall bearers are David Tittle, Willie Hatfield, Troy Cox, Herschel Hughes, Nelson Worley and Charles Garner.

Mrs. Mattie Ruth Andrews Dies In Chicago

Mrs. Mattie Ruth Andrews of Chicago, Ill., passed away Friday in Chicago after being in failing health for several years. She was a member of the Fairview Baptist Church and was 29 years of age.

Funeral services were conducted Tuesday afternoon in the chapel of McMillan Funeral Home with Bro. Wilburn Sharpe and Bro. Sidney Dobbis officiating. Burial was in the Osborne Creek Cemetery with McMillan Funeral Directors in charge.

She leaves her husband, Bill Andrews of Chicago, Ill.; her parents, Mr. and Mrs. Roy Nunley of Booneville; a son, Ronnie Robinson of Memphis; three brothers, Alvin Nunley of Booneville, Tommy Nunley of Memphis and Ned Nunley of the U. S. Army; three sisters, Mrs. Florence Easton of Chicago, Ill., Mrs. Fay Harris of Booneville and Mrs. Betty Owens of Booneville.



SAN ANTONIO, Texas — Airman Jesse H. McCoy, son of Mr. and Mrs. Cecil C. McCoy of Rt. 5, Booneville, has been selected for technical training at Chanute AFB, Ill., as a U. S. Air Force aircraft maintenance specialist. The airman recently completed basic training at Lackland AFB, Texas. His new school is part of the Air Training Command which conducts hundreds of specialized courses to provide technically trained personnel for the nation's aerospace force. Airman McCoy was graduated from Booneville High School in 1964 and attended Northeast Miss. Junior College.

Just Scribbling

MRS. FD JOHNSON



We have just received a beautiful new booklet on our capital city of Jackson and it was interesting to see that the population has increased from 95,000 in 1949 to 168,600... a dynamic growth. Today, the city is an outstanding religious, educational, governmental, medical, cultural and recreation center and is taking its place among the cities of the South. Since we became Mississippians in 1949, we have watched this growth. In fact, each time we go to Jackson, we remark on the number of new attractive buildings being erected.

We think Mississippi has a bright future and Booneville is doing its part to help lead the way.

I helped other Land Parents Club members serve at the concession stand at the football game Saturday night and now I understand why the companies came out with a low calorie drink. Judging from the stickiness of my hands up to my elbows, those regular drinks must be loaded with sugar.

I didn't mind that, however, but I did mind seeing a good football team like Booneville has this year getting defeated. I'm sure it won't dampen their spirit though, and they'll be back in the win column this week. They need our support.

In September, I always have a deep feeling for parents whose children are beginning school.

I vividly recall when both our boys went to school for the first time. The summer before they had lost a tooth or two; they dialed our telephone number constantly; they begged to play in the spray of the hose; they tramped through the house all day long; they opened the refrigerator door so often the ice wouldn't freeze; they pleaded to stay up after eight o'clock; they said, "Just a minute" a jillion times; they petted every stray animal that came around; but the day came when I scrubbed them clean, put on the new plaid shirt, pants and oxfords and presented them to Mr. Elementary Education.

And when I got back home, the silence was deafening.

From "Party Line", the following article entitled, "When Storms Come", might be worth reading:

"A great ship lies anchored in a windswept harbor. Black clouds gather and the captain gives orders to make everything tight. Suddenly the storm breaks in all its fury. Lightning flashes, thunder roars, the very flood gates are opened as rain pours down in torrents and the gale sweeps along the sky like a tornado.

The anchors grip deep into the ocean bottom and hold fast as the huge steel mast of the vessel heaves with tremendous force in the blast of the hurricane. Will the anchors hold?

Carefully were they forged, every part of selected material, for they are no stronger than their weakest link. Now is the testing time. In the balance of their strength rest lives and money.

Men are like anchor chains of a ship. They are dependable or else they fail in the test. To be dependable is to fulfill every right demand upon our time and ability; it is the strength that does not fail in time of stress; it is the promise that is never broken. The dependable man forges ahead in his life work. No matter what line of endeavor he may choose, he is sought out, for he is worthy of responsibility. Whether or not his "boss" is watching, he does his best. He makes good in smaller tasks and moves on to larger. In men, as in storm-tossed ship, dependability is necessary to success."

An insurance agent writing a policy for a cowpuncher asked if he'd ever had an accident and the man replied that he had not. "But," he added, "A bronc kicked me a couple of times and a rattlesnake bit me."

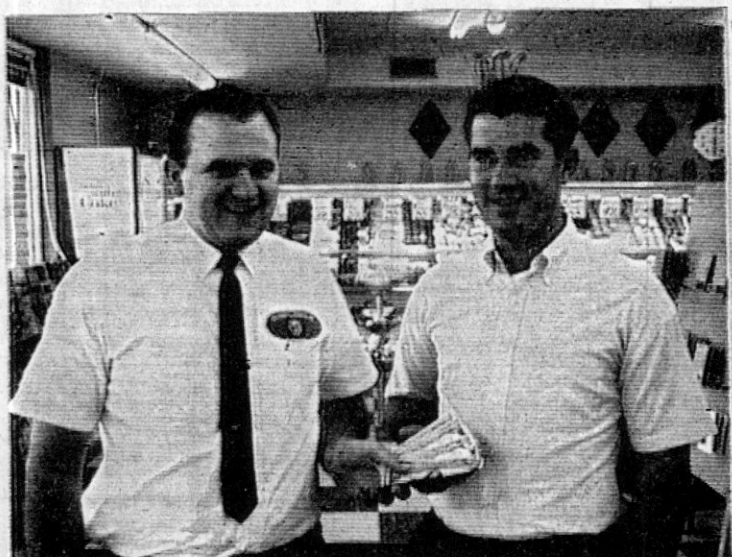
The agent asked, "Don't you call these accidents?" "No," the cowboy replied, "They did it on purpose."

Angry Customer: "These eggs aren't fresh." Indignant Grocer: "Not fresh? Why, the boys brought them from the country this morning." Customer: "What country?"

Then there was the Texas oilman who was so wealthy he had well-to-well carpeting.

If we have more car enemies, we can at least treat our friends a little kinder.

I'll next week
Helen



JACKPOT WINNER—Jimmy Buryman, right, of Ripley, Route 2, was the winner of the \$100 Jackpot in the drawing Saturday at the Sunflower Food Store here. He is shown receiving the money from Leland Barnett, store manager.

MEN in ACTION WEAR



RED WING SHOES FOR COMFORT... ALL-DAY LONG

Crafted for extra rugged wear; yet light. Right for your work.

- Cellulose cushion insoles
- Spring steel shank
- Hypalon soles and heels
- Burgundy Desires upper for a dressy look

Come in. See our complete line. We're headquarters for Red Wing's service oxfords.

Moore's Men's Store



MR. AND MRS. ROY CLAYTON ROBBINS

Miss Betty Faye Waggoner Becomes Bride Of Roy Clayton Robbins In Home Ceremony

In a candlelight ceremony with a background of palm leaves and gladioli, Miss Betty Faye Waggoner became the bride of Roy Clayton Robbins of Booneville on September 4th.

The Rev. Clifford Rinehart officiated at the 4 o'clock double ring ceremony, which was followed by a reception given by the groom's parents in their home.

The bride, only daughter of Mr. and Mrs. Robert William Waggoner of St. Louis, Missouri, was given in marriage by her father. She wore a street length, long sleeve chantilly lace gown with a scalloped hemline. Her veil of illusion was held in place with a cluster of roses and she carried a bouquet of white carnations and ivy.

Mrs. David DeVaughn, sister of the groom, was matron of honor. Mr. Robbins chose David DeVaughn as best man.

The bride, a granddaughter of Mrs. Esther May Isbell of New Site and the late Walter Clarence Isbell, attended St. Louis County Junior College and is presently enrolled in the Extension Division of

D. Wigley of Huntsville, Ala.

Mr. and Mrs. James Mann, who were married Sept. 3, are presently making their home in Cicero, Illinois.

Sunday guests of Mrs. Guy Garner and Mr. and Mrs. Dalton Garner were Mr. and Mrs. Percy Lewis and Mrs. Gertrude Williams of Tupelo, Mr. and Mrs. William Morgan, Harriette and David of Memphis, and Mr. and Mrs. Marvin Hinds of New Albany.

Mrs. W. A. Pickett returned home Tuesday to Edwards, Miss., after spending the week end with Mr. and Mrs. Ralph Stutts.

Mrs. Stewart Vail spent several days in Harpersville, Miss., with her mother, Mrs. Claude Sanders, Sr.

Mrs. W. A. Brewer and the H. G. Ewells had as their guests this week Mrs. Wilbert Conn from Oaklawn, Ill., and Mr. Robert D. Brewer from Washington, D. C.

Mr. and Mrs. Jim Gibbons recently accompanied their granddaughter, Lori Killom, home to Lebanon, Tenn., and visited Mr. and Mrs. Paul Killom. Mr. Killom is the new education director of College Street Church of Christ.

Mr. and Mrs. M. C. Parker from Decatur, Ga., visited last weekend with Mrs. Henrietta Carter, who is ill in the local hospital, and other relatives.

Miss Wanda Holder left Monday for MSCW, where she will be continuing her education by doing graduate work in Home Economics.

Walker Reunion Held Sept. 4

On Sunday, September 4th, the family of Mrs. Anna Walker and the late Mr. J. R. Walker gathered at the home of Mrs. Dolly Murphy for a reunion.

It was a very enjoyable day for all those attending. Everyone enjoyed the delicious picnic style lunch served at the noon hour.

Those attending were: Mrs. Mittie Wylie of Alabama; Mr. and Mrs. W. W. Howell of Hackleburg, Ala.; Mr. and Mrs. Mack Hisaw of Baldwin, Mr. and Mrs. G. L. Walker of Marietta, Mr. and Mrs. Ernest Walker and Ricky of Amory, Mr. and Mrs. J. D. Walker and Sharron of Nettleton, Mr. and Mrs. Travis Hulsey and children of Haleyville, Ala., Mr. and Mrs. Dennis Taylor, Linda and Steve of Huntsville, Ala., Mrs. Raymond Wylie, Sharron and Ray of Sheffield, Ala., Mr. and Mrs. Oneal Jackson and children of Marietta, Mr. and Mrs. L. C. Martin, Timmy and Tony of Tupelo, Mr. and Mrs. J. W. Harris, Judy and Janis of Marietta, Mr. and Mrs. Bobby Atkins, Shelia and Donny of Booneville, Mr. and Mrs. Joe Ellis

Constitution Week Proclamation

The Natchez Trace Chapter, Daughters of the American Revolution, with Mrs. Paul Dobbins as Regent, urges every citizen to observe Constitution Week on Sept. 17-23.

PROCLAMATION

WHEREAS, The Constitution of the United States of America gives us the foundation for a free, prosperous, and independent life for every citizen, but each generation, in time, must work for and claim it; otherwise, through carelessness or indifference, the rights and liberties we have enjoyed may vanish; and

WHEREAS, It is of the greatest consequence that the citizens fully understand the provisions and principles contained in the Constitution of the United States of America in order to be able to properly support it as, "The greatest document for human liberty in two thousand years if recorded history"; and

WHEREAS, The people of the United States should be deeply grateful to their Founding Fathers for the wisdom and foresight they displayed in writing and adopting the Constitution; and

WHEREAS, The independence granted to the American people to enjoy such freedom and liberty, unknown to any other country, should be celebrated by appropriate ceremonies and activities during Constitution Week, September 17-23, as designated by proclamation of the President of the United States in accordance with Public Law No. 915;

NOW, THEREFORE, I, Marion Smith, by virtue of the authority vested in me as Mayor of the City of Booneville in the State of Mississippi do hereby proclaim the week of September 17-23, 1966 as

CONSTITUTION WEEK in the City of Booneville, and urge all our citizens to pay special attention during that week to our Federal Constitution and the ad-

vantages of American Citizenship.

In Witness Whereof, I have hereunto set my hand and caused the Seal of the City to be affixed at Booneville this 13th day of September in the year of our Lord one thousand nine hundred and sixty-six, and the independence of the United States of America, the one hundredth and ninetieth.

Signed: Marion W. Smith

St. Andrew Presbytery Fall Men's Rally Set

"Men from the ninety-one Presbyterian churches of North Mississippi will meet in the First Presbyterian Church of Columbus, Mississippi for their Fall Presbytery-wide Rally, Sunday afternoon, Sept 18th at 2:30 p.m.

W. L. "Bill" Holland, President, of Amory, will preside at this meeting and H. P. "Buck" Daggett, Secretary-Treasurer, of West Point, will handle all the business details.

Guest speaker for the meeting will be Rev. G. Aiken Taylor, of Asheville, North Carolina, editor of the Presbyterian Journal. Dr. Taylor, will also fill the pulpit of the First Presbyterian church at their regular morning and evening worship services on the 18th.

You're Always You're (see ad elsewhere in this issue)

VALUABLE COUPON

200 Free Miss Dixie Belle Gift Stamps

with this coupon & \$5.00 purchase at

Sappington Grocery

BLACKLAND ROAD

EXPIRES SEPTEMBER 30, 1966

ARE YOUR SAVINGS EARNING

5%

THEY CAN BE IF

YOU SAVE WITH NORTH MISSISSIPPI SAVINGS & LOAN ASSOCIATION

Each Deposit Insured by National General Insurance Corp. YOUR SAVINGS GROW BIGGER — FASTER WITH US!

North Miss. Savings & Loan Building Booneville Phone 728-6241

SALE Silver GIFTS

At great savings to you!

Take advantage of this special event to save on lovely accessories in famous WM. ROGERS ★ SILVERPLATE made by The International Silver Company. Buy now at these special prices to solve all your gift problems. Prices shown subject to Federal Tax.

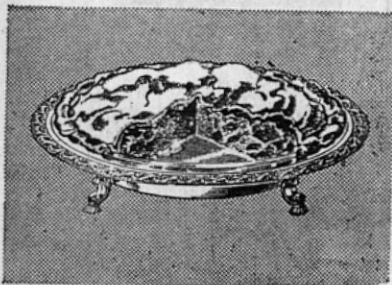
USE OUR LAY-AWAY • EASY TERMS ARRANGED

FAMOUS WM. ROGERS ★ SILVERPLATE

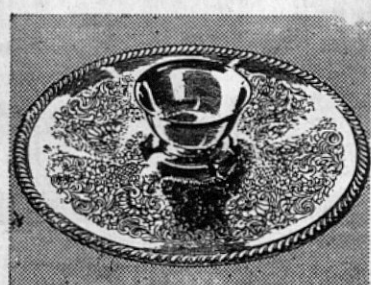


5-PIECE TEA AND COFFEE SERVICE
9-cup coffee pot, 9-cup tea pot,
sugar, creamer and 24" tray
with handles.

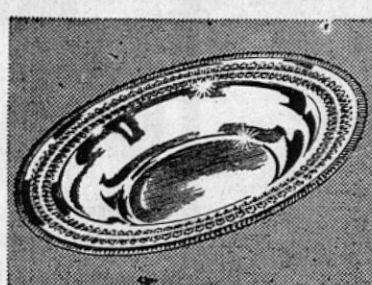
\$54.95



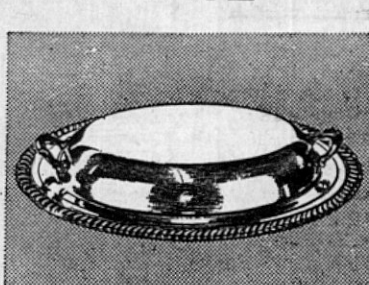
11" PIE DISH, Glass Liner,
\$12.50, Now \$8.95



12" CHIP 'N' DIP
\$12.50, Now \$8.95



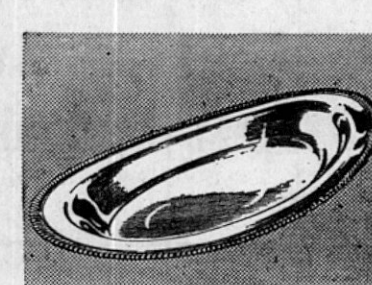
12 1/2" BOWL
\$9.00, Now \$5.95



DOUBLE VEGETABLE DISH
\$12.50, Now \$8.95



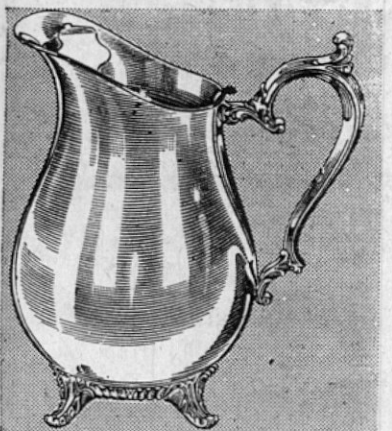
COMPOSITE —
\$8.95, Now \$5.95



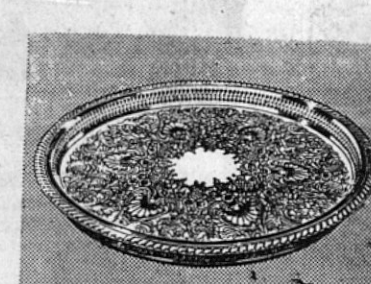
12 1/2" BREAD TRAY
\$8.95, Now \$5.95



7 1/2" BON BON,
\$5.50, Now \$2.95



Water Pitcher
\$15.95, Now \$10.95



15" GALLERY TRAY
\$15.95, Now \$10.95
16" Gallery Tray
\$8.95, Now \$5.95



7in. Candy Dish
\$3.50, Now \$2.50



PIERCED TRAY
\$12.50, Now \$8.95
12 1/2" Pierced Tray
\$8.95, Now \$5.95



10 1/2" RELISH DISH
\$7.95, Now \$4.95



Cranberry Set
\$6.50, Now \$3.95

FREE GIFT WRAPPING

WAY-FIL JEWELRY

Phone 728-5080

Mail And Phone Orders Promptly Filled.

On The Local Scene

Mr. and Mrs. Bob McKinney of Booneville announce the arrival of a baby son, Robert Harold, who arrived September 8 at the Baldwin Hospital, weighing 7 lbs. Grandparents are Mr. and Mrs. M. F. Glover and Mr. and Mrs. Marvin McKinney of Rt. 4, Booneville. Mrs. McKinney is the former Madge Glover.

Mr. and Mrs. Russell Johnson of Oxford spent the weekend with Mrs. Johnson's parents, Mr. and Mrs. Henry Robertson.

Mr. and Mrs. W. J. Williams of Decatur, Ala. were Sunday afternoon guests of Dr. and Mrs. W. Cleveland, Jr. and family.

Robin Richerson left last week for Hattiesburg, where he entered the University of Southern Miss. as a freshman.

Miss Martha Curtis of Olive Branch and Miss Nancy Thomason of Memphis were recent visitors of Mary Neal Richerson. Miss Richerson accompanied them to Memphis where she was an attendant in the wedding of Miss Marion Taylor and Mr. Brooks Reid. Mary Neal and the bride-elect were classmates at Millsaps College.

Mr. Larry Morgan left Monday for Jackson where he will be enrolled at Belhaven College.



MR. AND MRS. WILLIAM C. CRAFTON, JR.

Miss Helen Dianne Bishop And William C. Crafton, Jr., Married At Saltillo

Miss Helen Dianne Bishop, daughter of Mr. and Mrs. Neal Bishop of Saltillo, and William C. Crafton, Jr., son of Mr. and Mrs. William C. Crafton, Sr., of Fairland, Oklahoma, were married September 10 at 7:30 p.m. in a candlelight ceremony at the Saltillo Baptist Church, with Elder J. C. Gassaway officiating.

Nuptial music was presented by Mrs. Adelia Garrett, cousin of the bride, soloist, and Mrs. Gene Garrett and Miss Cheryl Akin, cousins of the bride, pianists.

The bride wore a bridal gown of white peau de soie with bodice and front border of chantilly lace and seed pearls. The gown featured a straight skirt with built-in train and long sleeves ending in points at the wrist. She wore a veil of tulle, with seed pearls and rhinestones at the crown, and carried a bouquet of cascading fleur d'amour and stephanotis. Her only ornament was a single strand of cultured pearls.

Mrs. John Walden, sister of the bride, was matron of honor. She wore a floor length dress of rose peau de soie, with a rose headpiece and matching shoes. Bridesmaids were Misses Peggy

Smith of Saltillo, Ann Prather of Booneville, and Betty Crafton and Ann Crafton, sisters of the groom. They were dressed in floor length royal blue peau de soie, with

matching headpieces and shoes. Their flowers were pink rose nosegays with green velvet steams.

Ring bearer was Marty Robinson of Corinth, and Sherry Sullivan, cousin of the groom, was flower girl.

The mother of the bride wore a beige suit with matching accessories and a corsage of pink carnations.

The groom's mother was attired in a royal blue suit with blue accessories. Her corsage was of white carnations.

Mrs. Lula Goodman, grandmother of the groom, wore a navy dress with black accessories.

Following the ceremony a reception was held in the Fellowship Hall of the church. Guests were registered by Mrs. Gerald Bishop, sister-in-law of the bride. Mrs. Alfred Sullivan, cousin of the groom, presided at the punch bowl which was decorated with pink rosebuds and pink baby's breath.

The wedding cake, surrounded by seven pink hibiscus, was served by Mrs. Preston Cantrell, sister of the bride, and Mrs. Andrew Wren. Nuts and mints were also served.

For traveling the bride wore a navy suit with matching paisley blouse and navy suede shoes. Her going-away corsage was of fleur d'amour.

After a short wedding trip the couple will reside in Stillwater, Oklahoma, where both will attend the University of Oklahoma.

The ushers and groomsmen en-

ON THE LOCAL SCENE

Caraly Moorhead, Joyce Caldwell, Paula Ellzey, Jane Honeycutt, Beverly Barron, Gloria Fulghum, and Gloria Dixon were among those who will be attending MSCW this fall.

Mr. and Mrs. L. L. Leagon returned this week after visiting Mr. Leagon's sister in Niagara Falls, N. Y., and Mr. and Mrs. Brooks Hughes, also of New York.

Norman Williamson of Forest spent a few days in Booneville visiting the Pascal Box family and Elizabeth.

Others from Booneville, who will be at Miss. State this year are David Moore and Buddy Walden.

Mr. and Mrs. Will T. Lee and daughter, Cathy, from Mt. Vernon, Ill., visited Mr. J. T. Lee and other relatives over the weekend.

Liz Box and Steve Franks returned to Millsaps College Sunday to begin the fall semester.

Dr. Joseph Hurst, Joe Duckworth, Bud McCary of Oxford, Garfield Wheeler, Winston Wilmon returned Sunday night after a four day deep-sea fishing trip to Destin, Fla.

Among the students who are attending the groom at the Natchez Trace Inn at 5:30 on the afternoon preceding the wedding.

tending Ole Miss this fall from Booneville are Linda Martin, Sandra Pounds, Harriet Moore, Eddie Barnett, David West, Dean Stacy, Garth Clifton, Wilbert Walden, Pepper Sutherland, Eddie Finch, and Olivia LeCroy.

Notice
The monthly singing at Blackland Methodist Church will be held on Friday night, September 16, beginning at 7:15. Everyone is invited.

Babe Ruth hit 714 home runs.

GOOD NEWS FOR FARMERS
PLENTY OF NEW AND USED COMBINES & TRACTORS AVAILABLE

COMBINES
No Interest or Carrying Charges Until April 1st, 1967
TRACTORS
No Interest or Carrying Charges Until March 1st, 1967

BUY NOW! GET FULL ADVANTAGE OF THIS OFFER.

MURPHY'S INTERNATIONAL

Hy. 45 North

W. M. Murphy



Full campus schedule

A full session of morning classes. Then it's off to your part-time job in town. Back on campus again for the evening's dance party. Don't let your appearance show the strain of the day's events. Wear a great looking Cricketeer Worsted Twist Suit. Its rugged fabric will see you through the last frug with no signs of pooping out, even if you do.

CRICKETEER®
University Worsted Twist Suit.

\$65.00

Feldman's

BOONEVILLE'S GREATEST STORE

GALLOWAY'S FOOD MART
101 MONROE ST.

STORE HOURS:
MON. THRU SAT. 6 A.M. TO 7 P.M.
SUNDAY 7 A.M. TO 7 P.M.

CRACKER BARREL
CRACKERS, lb. 21¢
LIBBY'S — 303 SIZE
FRUIT COCKTAIL . 2 for 49¢
HUNT'S
TOMATO SAUCE, 8-oz. 2 for 21¢

WITH \$5.00 PURCHASE

BACON M&H or Flavorite **lb. 49¢**

RINSO OR CHEER
WASHING POWDER Giant Size 69¢
PEANUT BUTTER, Big Chief . . . Quart 69¢
DOG FOOD, Twin Pet 3 cans 21¢
SHORTENING Richtex 3-lb. can 71¢
INSTANT COFFEE Maxwell House . 12 oz. \$1.33
PEAS, School Day 4 Sieve, 303 Size . 2 cans 29¢
BAGGIES, 150 Sandwich Bags 53¢

-- FROZEN FOOD --

PERCH FILLETS, Booth lb. 49¢
CUT CORN, Libby's 24-oz. pkg. 39¢

GRAPES Flame Tokay **lb. 17¢**

LEMONS, Dozen 29¢
POTATOES, U. S. No. 1 Red, 10 lbs. 49¢

BOLOGNA Sou. Belle, All Meat **lb. 49¢**

Smoked Sausage lb. 49¢

Smoked Picnics lb. 49¢

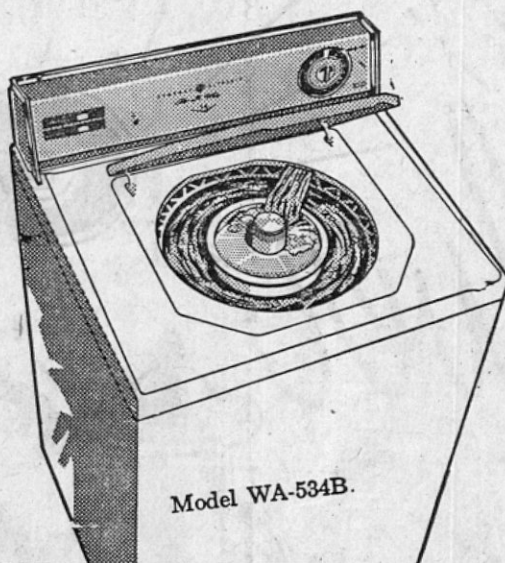


"Just For You" Appreciation Specials

NO Payment Until October 25th On Major Appl., T. V., & Stereo



Filter-Flo® Washer



\$2.25
Week
\$177.74
with trade

- 14-Pound Capacity
- 2 Wash Cycles
- 3-Wash Temperatures
- 3 Water Level Selections

See how much this
G. E. Freezer saves you!

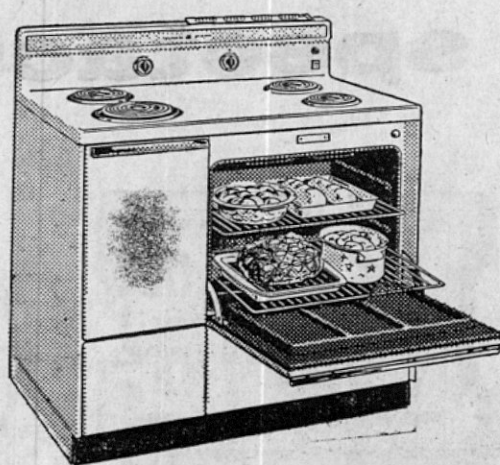


- HOLDS UP TO 406 LBS. FROZEN FOOD
- UP-RIGHT CONVENIENCE
- POSITIVE SAFETY DOOR LATCH

\$2.25 Per Week
Low, Low Price! \$184.50



40" Range



40" RANGE
Only \$2.00
weekly
\$166.60
with trade

- Big Oven
- Removable Door For Easy Cleaning
- Appliance outlet
- No-Drip Cooktop
- Storage Drawer

No Money Down With Trade

OUR Budget Specials!
Used But Like New GE \$79.95
Mobile Maid Dish Washer
Only \$1.25 Per Week

SPECIAL!



STEAM AND DRY IRON
MODEL F66
• Steam Irons—
• Dry Irons—
• Contour handle—
• Cord lift—
ONLY \$9.95

Only \$1.25 week

Eureka Canister
VACUUM
CLEANER

\$26.66

Only \$1.25 per wk.

1 - USED

23" T.V.

\$129.95

WITH TRADE

Only \$1.25 per wk.

Sovereign -
Portable
SEWING
MACHINE

\$44.95

Only \$1.25 week

USE our EASY
PAY PLAN

No Money Down
with Trade

Up To 36 Months
TO PAY!

Goodyear Service Store

Hy. 45 North

Booneville, Miss.

Phone 728-6276

WANT-ADS

FOR SALE

SAVE YOUR FOOD... SAVE YOUR MONEY... With A HOME FREEZER

SPECIAL PRICES ON ALL SIZES

KENNETH SMITH

Firestone Dealer

"CUSTOMER SATISFACTION GUARANTEED"

FOR SALE — 1956 Chevrolet, 4 door, two tone, automatic, new motor. Theron S. Pounds, phone 728-4173. 21-tfc

FOR SALE — Reconditioned bicycles, will take trade-ins. C. R. Higgason, Old Marietta Road, Phone 728-6462. 11-tfc

FOR AUTOMOBILE AIR CONDITIONING come by Billingsley Chevrolet Company and see Jim Holley or call 728-4462. We also have trailer hitches for most cars. 12-tfc

DON'T STOP, START! If your drain is about to stop, start it with Brown's Drain Pipe Solvent. It can be purchased at Gordon McKee's Grocery, Liberty Cash Grocery, Davis Grocery, Dixie Dandy, McCoy Grocery, Wheeler, Miss., Galloway Food Mart, Sunflower Food Store, Bonds Plumbing and Drilling, Barron's Grocery and O. C. arber's Grocery. 22-tfc

FOR SALE: Four 8-week old pigs, to hold out for extended duty. For more information and details call 728-5453. 25-tfc

FOR SALE — 1955 Ford, one owner, 66,000 actual miles. See Coy Livingston or call 728-4750 or 728-4435. 24-tfc

FOR WATCHES, DIAMONDS, JEWELRY and the best in watch repairing in town, go to Smith Goddard's Jewelry. "If you don't know diamonds or jewelry, the best thing for you is to know a jeweler you can trust." We give S&H Green Stamps. Customer Satisfaction Guaranteed. 7-tfc

Fat Overweight

Available to you without a doctor's prescription, our product called Galaxon. You must lose ugly fat or your money back. Galaxon is a tablet and easily swallowed. Get rid of excess fat and live longer. Galaxon costs \$3.00 and is sold on this guarantee: if not satisfied for any reason, just return the package to your druggist and get your full money back. No questions asked. Galaxon is sold with this guarantee by:

TIGRETT DRUG STORE
Booneville
Mail Orders Filled
24-3tp

PART TIME FEMALE HELP WANTED

Excellent opportunity for experienced bookkeeper-typist. Prefer long time resident of Prentiss County. Apply in person

at
North Mississippi Savings & Loan Ass'n.
North Mississippi Savings & Loan Bldg.
Booneville, Miss.
25-tfc

WE WILL PAY YOU

CASH

FOR YOUR HOME, FARM, Or OTHER REAL ESTATE.

NO WAITING

Franks Investment Company

LOANS — REAL ESTATE — INSURANCE
16 COLLEGE STREET TEL. 728-4495

We repair guns, small appliances and most any type item at Prentiss Hardware Co. 42-tfc

We Now Feature FLORSHEIM SHOES

Booneville's Largest Selection of Better Shoes

FELDMAN'S

FOR SALE: Kerosene, tractor fuel and diesel fuel for non-highway use. Dobbins Service Sta. 11-tfc

FOR SALE: Esso, Esso Extra and Uniflow Motor Oils. Dobbins Service Sta., Phone 728-4861. 3-tfc

FOR SALE: Air condition filters, all sizes. Brown Plumbing and Electrical Supply Co. 4-tfc

FOR SALE: Used TV's reasonable. New TV antennas installed. We carry the Channel Master and Finco line of TV Antennas. See us today. City T. V. Service. Call 728-5875. 51-tfc

FOR SALE OR TRADE — Nice 3-bedroom house, completely redecorated, located on West Side of town. Call 728-6862 day or 728-5873 night. 21-tfc

We repair and make old saddles look like new. Prentiss Hardware Co. 42-tfc

ROYAL TYPEWRITERS and Victor Business Machines. Authorized sales and service. Durn's Office Supply, 405 Cruise St., Corinth, Miss. 16-tfc

You Will Find

just the RIGHT SIZE Shoe for that boy or girl at—
GRAY'S
Widths A to D. All sizes.

It's so important for your children's feet to be fitted correctly.

SPECIAL For Newly Weds

3 Rooms Of Furniture for Only \$299.80

(UP TO 36 MONTHS TO PAY) CONSISTING OF:

5-pc. Bedroom Suite
Bookcase Bed, Chest, Double Dresser, Large Mirror with special finish for long-lasting beauty, Box Springs, Mattress.

5-pc. Living Room Suite
Couch (makes bed), Large Chair, 2 End Tables, Coffee Table.

For A Limited Time Only, Above Offer Will Also Include FREE 32-pc. Set Imported Chinaware

5-pc. Dinette Set

SPECIAL DEALS ALSO ON COPPERTONE RANGES AND REFRIGERATORS

PATE'S
TV & Appliances
FIRST STREET — Booneville
PHONE 728-5959
9-tfc

MOVING CALL MORGAN

Moving Service
117 BREWER STREET
BOONEVILLE
Call after 5 p.m., 728-4124
31-tfc

OPEN FOR INSPECTION

3-Bedroom House in Wheeler Subdivision
For Further Information See HERSCHEL HIDDLESTON or CHARLES BROWN
728-6172
4-tfc

FOR SALE OR TRADE

New 3 bedroom brick and frame homes. REASONABLE PRICE
F.H.A. FINANCING
GLEN SMITH
— PHONE 728-5740 —
36-tfc

USED REFRIGERATORS, ranges and other appliances at money-saving low prices. We also rent refrigerators. John H. Price, Masonic Building. 26-tfc

JACKSON MFRS. OF LUMBER & PALETS.
We manufacture and deliver rough or planed lumber and pallets. Also slabs and wood from our mills near Hill's Chapel, Hy. 30 East. Phone 728-6663 day and night. Booneville, Miss. 13-52tp

FOR SALE: New 3-bedroom house on Felter St. Good size lot. Small closing cost. Glen Smith, phone 728-5740. 50-tfc

FOR SALE: 2 bedroom home on Hatchell St. A real buy at \$6,500. Guy E. Jones, phone 728-6693. 38-tfc

FALL GRAZING, Plant it today and you will be proud you did tomorrow. You can also get A.S.C.S. assistance on this. See us for your seeds, lime and fertilizer. Caver Seed & Fertilizer Co., Inc. 23-3tc

REAL ESTATE

FOR SALE — 4-bedroom house and one acre of land. Located on Jacinto Road. See Dave Tittle or Cecil Barrett. 25-tfc

FOR SALE: 36-ft. House Trailer, furnished, new couch and mattress. Price \$1,000.00. Would consider trade. See Leonard Nipper, 112 Cole St., phone 728-6903. 25-tfc

FOR SALE: Three bedroom house, central heated and air-conditioned. FHA financed. Pay equity and take up note. 25-2tc

LOTS FOR SALE, see O. C. Harber, 1 1/4 miles East on Highway 30. 24-2tc

FOR SALE — 5-room house and shop on nice lot, located on Jacinto Road. Will finance. See or call O. C. Crabb, 728-5367. 24-3tc

FOR SALE — My home on Osborne Creek Road, near Smith Grocery, 3 bedrooms, large living room, kitchen, and dining room. All conveniences. Beautiful shade trees, front and back. 3 1/4 acres, 2 acres good pasture, out buildings for horses and cows. Large garden. Will trade for house in town. Part cash, balance terms. Call 728-6337. L. C. Howser. 24-2tc

FOR SALE — 3 bedroom brick house, located three miles East of Booneville on Highway 4. See Felix Downs or call 728-6308. 23-tfc

FOR SALE — Two new house trailers. Both two bedrooms. One is 12 x 40. One is 10 x 50. Also one used trailer, 36 ft. long, one bedroom. Call or see Charles Eaton, Phone 728-4812. 20-tfc

REAL ESTATE

3 bedroom, 2 1/2 baths, Central Heat and Air, Built-ins, carpets, large lot, Brick, facing NEMJC. 3 bedroom Brick, large lot, City water and gas, F.H.A. Loan of 5 1/4%. Pay owner's equity. Wheeler Subdivision. 18-tfc

3 bedroom, bath, utility room, den, on large corner lot near High School. Pay owner's equity and assume loan. F.H.A. owned, 3 bedroom dwelling, located in Wheeler Subdivision. 16-tfc

3 bedroom, 2 baths, den, F.H.A. owned, new roof, repainted, in excellent condition. Located on Third Street. Have an established business for sale in Booneville. 16-tfc

140 acre farm, Brick house, 3 acres, 40 acre pasture, cotton allotment. New 3 bedroom Brick, ceramic tile bath, carport, F.H.A. supervised on building, 97% loan available. Shiloh Heights Subdivision. Theron S. Pounds, Real Estate, Broker, 202 Main St., Phone 728-4173. 21-tfc

FOR SALE — Three bedroom house in town. Call or see Charles Eaton, Phone 728-4812. 20-tfc

LOT FOR SALE: On West Side of town. See Mrs. Charlene Strange or call 728-4404. 17-tfc

FOR SALE — 3 bedroom house on 6 1/2 acres, two miles from Booneville. See or call Chester Cole at 728-6312. 14-tfc

HOUSE FOR SALE, 109 Magnolia Street, F.H.A. approved, completely redecorated inside and out. Two bedrooms. See Percy White at Booneville Lumber Company or call 728-5808. 6-tfc

REAL ESTATE

New 3 bedroom brick veneer, paneled den and kitchen, ceramic tiled bath, Chrysler AirTemp central air conditioning and heating, built-in range and oven, utility room and storage. A lovely cozy home with a view overlooking a lake, Near Junior High. Four acres one block from Highway 45 in downtown Booneville. Perfect location for Apartment House or small Sub-Division. House and lot in Foster Park. Three bedrooms, living room, dining room, large den, kitchen, and bath. Excellent location, very near High School. Needs a coat of paint but mighty good buy at \$8900. F. H. A. appraisal \$10,000. Commercial or Professional Building for sale in town. Now rented. Reasonable price and low down payment and easy terms. R. H. BURRESS, BROKER OFFICE AT DIXIE TRADING COMPANY BOONEVILLE, MISS. 45-tfc

FOR SALE: 2 bedroom house located on Lake St. Price \$6,000, with \$500.00 down and \$50.00 a month. See or call Bob Capleman, 728-5997. 24-tfc

FOR SALE: New Homes — 3 bedrooms, ceramic tile bath, electric heat built-in G.E. Kitchen. Behind Kemp's Super Market on Penny Lane. See or job or phone after p.m. Guy E. Jones, Phone 728-6693. 33-tfc

FOR RENT: One furnished 2-room apartment, private bath and private front and back entrance. Also one furnished bedroom with private entrance. Phone 728-4657 or see Mrs. W. E. Walker. 25-tfc

FOR RENT: Two bedroom house trailer in city. Phone 728-5881 or 728-5422. 25-tfc

FOR RENT — Two bedroom house on Highway 4 West. Call Doug Michael at 728-5148. 24-tfc

HOUSE FOR RENT across road from O. C. Harber's Grocery. Available September 15. Phone 728-5969. 24-tfc

FOR RENT — Lot for house trailer, located at 129 Lake St. See F. E. Shook or call 728-4478. 24-tfc

FOR RENT — Medicare now pays certain rentals of Convalescent supplies, like Hospital Beds, Wheel Chairs, Walkers, Crutches, and other items. If you are in need of any convalescent supplies and can qualify under Medicare, see your Doctor for his approval, and then let us fill your needs. We rent or sell many sick room items whether you are covered by Medicare or not. Floyd Drug Co., Booneville, Miss. 24-3tc

ng room, large den, kitchen, and bath. Excellent location, very near High School. Needs a coat of paint but mighty good buy at \$8900. F. H. A. appraisal \$10,000. Commercial or Professional Building for sale in town. Now rented. Reasonable price and low down payment and easy terms. R. H. BURRESS, BROKER OFFICE AT DIXIE TRADING COMPANY BOONEVILLE, MISS. 45-tfc

FOR SALE: 2 bedroom house located on Lake St. Price \$6,000, with \$500.00 down and \$50.00 a month. See or call Bob Capleman, 728-5997. 24-tfc

FOR SALE: New Homes — 3 bedrooms, ceramic tile bath, electric heat built-in G.E. Kitchen. Behind Kemp's Super Market on Penny Lane. See or job or phone after p.m. Guy E. Jones, Phone 728-6693. 33-tfc

FOR RENT: One furnished 2-room apartment, private bath and private front and back entrance. Also one furnished bedroom with private entrance. Phone 728-4657 or see Mrs. W. E. Walker. 25-tfc

FOR RENT: Two bedroom house trailer in city. Phone 728-5881 or 728-5422. 25-tfc

FOR RENT — Two bedroom house on Highway 4 West. Call Doug Michael at 728-5148. 24-tfc

HOUSE FOR RENT across road from O. C. Harber's Grocery. Available September 15. Phone 728-5969. 24-tfc

FOR RENT — Medicare now pays certain rentals of Convalescent supplies, like Hospital Beds, Wheel Chairs, Walkers, Crutches, and other items. If you are in need of any convalescent supplies and can qualify under Medicare, see your Doctor for his approval, and then let us fill your needs. We rent or sell many sick room items whether you are covered by Medicare or not. Floyd Drug Co., Booneville, Miss. 24-3tc

FOR RENT: Lot for house trailer, located at 129 Lake St. See F. E. Shook or call 728-4478. 24-tfc

FOR RENT — Two bedroom house on Highway 4 West. Call Doug Michael at 728-5148. 24-tfc

HOUSE FOR RENT across road from O. C. Harber's Grocery. Available September 15. Phone 728-5969. 24-tfc

FOR RENT — Medicare now pays certain rentals of Convalescent supplies, like Hospital Beds, Wheel Chairs, Walkers, Crutches, and other items. If you are in need of any convalescent supplies and can qualify under Medicare, see your Doctor for his approval, and then let us fill your needs. We rent or sell many sick room items whether you are covered by Medicare or not. Floyd Drug Co., Booneville, Miss. 24-3tc

FOR RENT: Lot for house trailer, located at 129 Lake St. See F. E. Shook or call 728-4478. 24-tfc

FOR RENT — Two bedroom house on Highway 4 West. Call Doug Michael at 728-5148. 24-tfc

HOUSE FOR RENT across road from O. C. Harber's Grocery. Available September 15. Phone 728-5969. 24-tfc

FOR RENT — Medicare now pays certain rentals of Convalescent supplies, like Hospital Beds, Wheel Chairs, Walkers, Crutches, and other items. If you are in need of any convalescent supplies and can qualify under Medicare, see your Doctor for his approval, and then let us fill your needs. We rent or sell many sick room items whether you are covered by Medicare or not. Floyd Drug Co., Booneville, Miss. 24-3tc

FOR RENT: Lot for house trailer, located at 129 Lake St. See F. E. Shook or call 728-4478. 24-tfc

FOR RENT — Two bedroom house on Highway 4 West. Call Doug Michael at 728-5148. 24-tfc

HOUSE FOR RENT across road from O. C. Harber's Grocery. Available September 15. Phone 728-5969. 24-tfc

FOR RENT — Medicare now pays certain rentals of Convalescent supplies, like Hospital Beds, Wheel Chairs, Walkers, Crutches, and other items. If you are in need of any convalescent supplies and can qualify under Medicare, see your Doctor for his approval, and then let us fill your needs. We rent or sell many sick room items whether you are covered by Medicare or not. Floyd Drug Co., Booneville, Miss. 24-3tc

FOR RENT: Lot for house trailer, located at 129 Lake St. See F. E. Shook or call 728-4478. 24-tfc

FOR RENT — Two bedroom house on Highway 4 West. Call Doug Michael at 728-5148. 24-tfc

HOUSE FOR RENT across road from O. C. Harber's Grocery. Available September 15. Phone 728-5969. 24-tfc

FOR RENT — Medicare now pays certain rentals of Convalescent supplies, like Hospital Beds, Wheel Chairs, Walkers, Crutches, and other items. If you are in need of any convalescent supplies and can qualify under Medicare, see your Doctor for his approval, and then let us fill your needs. We rent or sell many sick room items whether you are covered by Medicare or not. Floyd Drug Co., Booneville, Miss. 24-3tc

FOR RENT: Lot for house trailer, located at 129 Lake St. See F. E. Shook or call 728-4478. 24-tfc

FOR RENT — Two bedroom house on Highway 4 West. Call Doug Michael at 728-5148. 24-tfc

HOUSE FOR RENT across road from O. C. Harber's Grocery. Available September 15. Phone 728-5969. 24-tfc

FOR RENT — Medicare now pays certain rentals of Convalescent supplies, like Hospital Beds, Wheel Chairs, Walkers, Crutches, and other items. If you are in need of any convalescent supplies and can qualify under Medicare, see your Doctor for his approval, and then let us fill your needs. We rent or sell many sick room items whether you are covered by Medicare or not. Floyd Drug Co., Booneville, Miss. 24-3tc

FOR RENT: Lot for house trailer, located at 129 Lake St. See F. E. Shook or call 728-4478. 24-tfc

FOR RENT — Two bedroom house on Highway 4 West. Call Doug Michael at 728-5148. 24-tfc

HOUSE FOR RENT across road from O. C. Harber's Grocery. Available September 15. Phone 728-5969. 24-tfc

FOR RENT — Medicare now pays certain rentals of Convalescent supplies, like Hospital Beds, Wheel Chairs, Walkers, Crutches, and other items. If you are in need of any convalescent supplies and can qualify under Medicare, see your Doctor for his approval, and then let us fill your needs. We rent or sell many sick room items whether you are covered by Medicare or not. Floyd Drug Co., Booneville, Miss. 24-3tc

FOR RENT: Lot for house trailer, located at 129 Lake St. See F. E. Shook or call 728-4478. 24-tfc

FOR RENT — Two bedroom house on Highway 4 West. Call Doug Michael at 728-5148. 24-tfc

HOUSE FOR RENT across road from O. C. Harber's Grocery. Available September 15. Phone 728-5969. 24-tfc

FOR RENT — Medicare now pays certain rentals of Convalescent supplies, like Hospital Beds, Wheel Chairs, Walkers, Crutches, and other items. If you are in need of any convalescent supplies and can qualify under Medicare, see your Doctor for his approval, and then let us fill your needs. We rent or sell many sick room items whether you are covered by Medicare or not. Floyd Drug Co., Booneville, Miss. 24-3tc

Loan Bldg., Booneville, Miss. 25-tfc

WANTED: Secretary to work for the International Shoe Machine Corp. Must be able to take short hand and type. Starting salary will be \$50. Two weeks paid vacation. Applicants can be interviewed on Mondays and Fridays. Phone 728-6680 or Howard Pike at 728-4898. 23-tfc

MAN OR WOMAN to succeed Rawleigh Dealer in N. Prentiss Co. or Booneville. Over 25 preferred and car necessary. Can earn \$125 and up per week from start. See R. H. Sims, Rt. No. 1, Booneville or write Rawleigh MSI-100-1145 Memphis, Tenn. 23-3tp

MISSING — German Shepherd dog, black over brown, last seen at Calvin Walker's Frozen Food Locker Monday afternoon. Collar, but no name plate. Reward for return. Contact Paul Botts, 728-5296. 25-2tc

NOTICE TO BIDDERS
RE: ADVERTISEMENT FOR BIDS TO FURNISH SUPPLIES TO THE CITY OF BOONEVILLE, MISSISSIPPI
STATE OF MISSISSIPPI
PRENTISS COUNTY

It is the intention of the Mayor and Board of Aldermen of the City of Booneville, Mississippi, to purchase supplies, equipment, materials, etc., as per specifications now on file with the Clerk of this Board for and on behalf of said City for the ensuing year 1966-1967, ending September 30, 1967, at the lowest and best bids.

Said supplies, equipment, materials, etc., are as follows:
Culverts, concrete, all diameters, plain and reinforced.
Culverts, metal, all diameters, copper bearing steel, copper bearing pure iron, zinc grip, asbestos bonded, pure iron, copper molybdenum iron, copper steel.
Lumber all No. 1 common untreated 8' up, all dimensions. Gravel, washed and clay FOB plant.
Blades, grader 1/2 x 6' x 8' Highway Department specifications.
Janitor supplies; toilet tissue, disinfectant, pineoil, soap, mops, brooms, floor sweep.
Gasoline, regular bulk delivery and Ethyl bulk delivery.
Diesel fuel.
Grease, all types.
Oil, 20, 30, 40 and 50 SAE.
Tires and tubes for automobiles, trucks, tractors and motor patrol. Asphalt, Mc-1, Ac-15, and Rc-2.
Such sealed bids to be filed with the Clerk of this Board at the City Hall in the City of Booneville, Mississippi, on or prior to 7:30 o'clock p.m. CST, on October 4, 1966.
The Mayor and Board of Aldermen reserve the right to reject any and all bids.
Done by order of the Mayor and Board of Aldermen of the City of Booneville, Mississippi, on this September 15, 1966.
O. J. ROBERTSON,
CITY CLERK
(Seal) 23-1tc

SAID SUPPLIES, EQUIPMENT, MATERIALS, ETC., ARE AS FOLLOWS:
Culverts, concrete, all diameters, plain and reinforced.
Culverts, metal, all diameters, copper bearing steel, copper bearing pure iron, zinc grip, asbestos bonded, pure iron, copper molybdenum iron, copper steel.
Lumber all No. 1 common untreated 8' up, all dimensions. Gravel, washed and clay FOB plant.
Blades, grader 1/2 x 6' x 8' Highway Department specifications.
Janitor supplies; toilet tissue, disinfectant, pineoil, soap, mops, brooms, floor sweep.
Gasoline, regular bulk delivery and Ethyl bulk delivery.
Diesel fuel.
Grease, all types.
Oil, 20, 30, 40 and 50 SAE.
Tires and tubes for automobiles, trucks, tractors and motor patrol. Asphalt, Mc-1, Ac-15, and Rc-2.
Such sealed bids to be filed with the Clerk of this Board at the City Hall in the City of Booneville, Mississippi, on or prior to 7:30 o'clock p.m. CST, on October 4, 1966.
The Mayor and Board of Aldermen reserve the right to reject any and all bids.
Done by order of the Mayor and Board of Aldermen of the City of Booneville, Mississippi, on this September 15, 1966.
O. J. ROBERTSON,
CITY CLERK
(Seal) 23-1tc

BRING YOUR FAMILY LAUNDRY to the self-service, coin-operated LAUNDERETTE across the street from Walden Motor Co. We never close. 52-tfc

HOUSEWIVES, learn how you can be successful in a business of your own. We train you. Write Avon Mgr., Mrs. Connie Ellard, Box 83, Aberdeen, Miss. 22-3tc

PIANOS: Repaired, Refinished and Tured. Pat's Television and Appliance Co. Phone 728-5959. 31-tfc

FOR ANY TYPE DIRT MOVING, call JOE ALLEN at 728-6940 or J. L. SIMS, JR., COLLECT AT 462-4357, RIENZI. 15-tfc

PROFESSIONAL WATCH REPAIR DIAMOND REMOUNTING Way-Fil Jewelry 1tc

SEPTIC TANKS — Pumped and cleaned. Call Jimmie Grizzard, phone 728-4462. 15-tfc

MONEY TO LOAN

LOANS OF ALL KINDS AT Stell Finance Co. Upstairs over Way-Fil Jewelry

POSTED
All lands owned or managed by persons listed below are posted against hunting, fishing, trespassing and livestock running at large:

Jrs. Georgia McManroe Est. 27-tfc
Myrl Fowler 3-52tp
W. L. Caver, Jr. 35-tfc
J. E. Shackelford 35-tfc
A. C. Wheeler 42-tfc
Mrs. Clay Wright 25-52tp
A. L. Lambert 27-tfc
Homer W. Parker 36-tfc
Miss Pearl Smith 35-52tp
Mrs. J. M. LeCroy 48-52tp
Jam. J. English Estate 48-52tp
J. E. Jennings 51-tfc
Kenneth Pounds 1-tfc
Hersebel W. Chase 1-26tp
Mrs. Essie Shamblin 1-26tp
Omer Lambert 2-26tp
Alton L. Smith 3-26p
Prentiss Horn 5-26p
Mrs. Sidney B. Robinson 14-10tp
G. B. Grisham 15-13p
J. A. Hicks 24-18tp

The following land is posted by the Blackland Sportsman's Club against dove hunting:

Fred Clement
Jim Oakley
Glen Davis
Leonard Graham
Dave Hatfield
Jake Stone
James George
Joe Haynes
Wade Trantham
Billy T. Jones
James Worley
J. P. Guin
Thomas Parham
Lynn Coats
Will Moore
Cecil Koon
O. E. Tucker
Harvey Morris
Dean Saylor
Rob Jones
H. L. Jones
W. C. LeCroy Estate
by Pat Prather
V. L. Coats
W. T. Coats
R. W. Kelley
W. E. Hill
Elmer Rowland
Hill Morgan
Dalton Garner
J. E. Rowland
E. C. Rowland
B. J. Blankenship
L. B. Rutherford
Gale Yates
Archie Saylor 24-4tp

PILE is soft and lofty... colors retain brilliance in carpets cleaned with Blue Lustre. Rent electric shampooer \$1. Prentiss Hardware. 25-tfc

NOTICE: Austin Shook has purchased an International Cotton Picker to pick cotton for the

WHEELER BAPTIST CHURCH
 Sunday School—10:00 a.m.
 Sunday School, 10:00 a.m.; Morning Worship
 Morning Worship—11:00 a.m.
 T. U.—6:30 p.m.; Evening Worship—7:15 p.m.
 Prayer Meeting Wednesday—7:30 p.m.—Welcome

PISGAH METHODIST CHURCH
 H. W. Lay, Pastor
 Sunday School—10:00 a.m.
 Worship Service—First Sunday, 9:45 a.m.; Second
 Sunday, 7:30 p.m.; Fourth Sunday, 11:00 a.m.
 Youth Fellowship—6:30 p.m.

FIRST METHODIST CHURCH
 Rev. W. R. Richerson, Pastor—West Church St.
 Sunday Church School—9:45 a.m.
 Morning Worship—11:00 a.m.
 Sunday Night Youth Fellowship—6:30 p.m.
 Evening Worship—7:30 p.m.
 Mid-Week Prayer Service—Wednesday 7:30 p.m.

CHURCH OF CHRIST
 Highway 45 North
 J. A. Thornton, Minister
 Sunday Bible School—9:45 a.m.
 Morning Worship—10:35 a.m.
 Sunday Night Young People Meeting—6:00 p.m.
 Evening Worship—7:00 p.m.
 Mid-Week Bible Study—Wednesday 7:00 p.m.

PRESBYTERIAN CHURCH
 Market Street
 Rev. Edwin Wilson (Supply)
 Sunday Worship Service—9:00 a.m.
 Sunday School—10:00 a.m.
 Sunday Young People's Meeting—6:00 p.m.

GRACE METHODIST CHURCH
 Highway 30 East
 Huey and Ruth Wood, Ministers
 Sunday School—9:45 a.m.
 Morning Worship—11:00 a.m.
 Sunday Night M.Y.F.—6:00 p.m.
 Evening Worship—7:00 p.m.
 Mid-Week Prayer Meeting—Wednesday 7:00 p.m.

FORKED OAK BAPTIST CHURCH
 Rev. Milton Wright, Pastor
 10:00 a.m.—Sunday School
 11:00 a.m.—Worship Service
 7:00 p.m.—Training Union
 8:00 p.m.—Worship Service
 7:00 p.m. Wednesday—Mid-Week prayer service

FIRST BAPTIST CHURCH
 First & Church St.—Rev. Billy E. Roby, Pastor
 Sunday School—9:45 a.m.
 Morning Worship—10:55 a.m.
 Training Union—6:30 p.m.
 Evening Worship—7:30 p.m.
 Prayer Meeting—Wednesday 7 p.m.

CAROLINA METHODIST CHURCH
 Rev. Huey Wood, Pastor — Hwy. 4 West
 Sunday School every Sunday at 10:00 a.m., ex-
 cept on 4th Sunday, at 11:00 a.m.
 Morning Worship—1st, 2nd, 3rd Sundays, 11 a.m.
 Morning Worship 4th Sunday at 10:00 a.m.
 Evening Worship 2nd Sunday 7:30 p.m.
 M. Y. F.—6:30 p.m.

EAST BOONEVILLE BAPTIST CHURCH
 Rev. Earle Green, Pastor—East Church Street
 S. S.—9:45 a.m.; Morning Worship—11:00 a.m.
 T. U.—6:00 p.m.; Evening Worship—7:00 p.m.
 Prayer Meeting—Wednesday 7:00 p.m.

CANDLER CHAPEL BAPTIST CHURCH
 Pastor, Rev. Alton Byrd
 Sunday Night—Training Union 6:30
 Preaching—7:30
 Wed. Night Prayer Meeting—7:00

PINEY GROVE BAPTIST CHURCH
 Bro. Dewey Wallis, Pastor
 Training Union—6:30 p.m.
 Evening Worship—7:30 p.m.
 Prayer Meeting—Wednesday at 6:30 p.m.
 Sunday School—10 a.m.
 Preaching Services each 2nd and 4th Sunday at
 11 a.m. and 7:30 p.m.

FAIRVIEW BAPTIST CHURCH
 Bro. H. C. Smart, Pastor
 Sunday School—10:00 a.m.
 Morning Worship—11:00 a.m.
 Evening Worship—6:30 p.m.
 Wednesday Night Prayer Meeting—7:30 p.m.

ZION REST CHURCH OF CHRIST
 Three Miles North of Marietta
 Sunday Bible School—9:30 a.m.
 Morning Worship—10:30 a.m.
 Bible Study—Monday, 7 p.m.

HOUSE OF PRAYER
 Don Eugene McGaughey, Pastor
 Earl Hixaw, Assistant Pastor
 Preaching Services Saturday night—7:30 p.m.
 Sunday School—10 a.m.
 Preaching Services Sunday—11 a.m. and 7:30 p.m.

HILL'S CHAPEL CHURCH OF CHRIST
 Jerry Smith, Minister
 Sunday Bible School—9:45
 Morning Worship—11:00 a.m.
 Evening Worship—7 p.m.
 Mid-Week Bible Study—Wednesday 7:00 p.m.

MARTIN HILL FREEWILL BAPTIST CHURCH
 Hwy. 30 East — Rev. Curtis Briley, Pastor
 Sunday School—10 a.m.
 Preaching—11 a.m.
 Young Peoples Training—6:30
 Evening Worship—7:00
 Mid-Week Services—Wednesday, 7:00

EAST MARIETTA BAPTIST CHURCH
 Bro. John Johnson, Pastor
 Sunday School—10 a.m.
 Morning Worship—11 a.m.
 Training Union—6 p.m.
 Evening Worship—7 p.m.
 Prayer Meeting—Wed., 6:30 p.m.
 Sunday Bible School—9:30 a.m.

MARIETTA CHURCH OF CHRIST
 G. T. Pharr, Minister
 Morning Worship—10:30 a.m.
 Evening Worship—7:00 p.m.
 Bible Study—Wednesday at 7:30 p.m.

CAIN'S CHAPEL UNITED PENTECOSTAL CHURCH
 H. L. Hatter, Pastor
 Sunday School—10:00 a.m.
 Morning Worship—11:00 a.m.
 Evening Worship—7:00 p.m.
 Youth Service—Tuesday 7:00 p.m.
 Bible Study—Thursday, 7:00 p.m.

STUTTS CHAPEL CHURCH OF CHRIST
 Lee Cole, Minister
 Sunday Bible Study—9:30 a.m.
 Sunday Morning Worship—10:30 a.m.
 Sunday Evening Song Practice—6:30
 Evening Worship—7:00

BLACKLAND METHODIST CHURCH
 Rev. Huey Wood, Pastor
 Sunday School—1st Sunday 11 a.m.
 2nd, 3rd, and 4th Sunday 10 a.m.
 Morning Worship—1st Sunday 10 a.m.
 2nd Sunday 11 a.m.
 Evening Worship—4th Sunday 7:30 p.m.

JACINTO CHURCH OF CHRIST
 Bro. J. T. Smith, Minister
 Sunday Bible School—9:45 a.m.
 Morning Worship—10:30 a.m.
 Evening Worship—6:30 p.m.
 Mid-Week Bible Study—Wednesday—7:00 p.m.

Copyright 1966 Keister Advertising Service, Inc., Strasburg, Va.

	Sunday	Monday	Tuesday	Wednesday	Thursday	Friday	Saturday
	1 Samuel 18:1-9	Psalms 51:1-9	Psalms 131:1-3	Jeremiah 10:1-7	Acts 26:1-8	1 Timothy 3:8-16	1 John 4:7-12

WEST BOONEVILLE CHURCH OF CHRIST
 Billy K. Farris, Minister
 Sunday Bible School—9:45 a.m.
 Morning Worship—10:35 a.m.
 Evening Worship—7:00 p.m.
 Bible Study, Wednesday—7:00 p.m.

CALVARY BAPTIST CHURCH
 Corner of Main and Broad St.
 Rev. T. F. Grubbs, Pastor
 Sunday School—9:55 a.m.
 Morning Worship—11:00 a.m.
 Training Union—6:00 p.m.
 Evening Worship—7:00 p.m.
 Prayer Meeting—Wednesday 7:00 p.m.

JUMPERTOWN CHURCH OF CHRIST
 Sunday Bible School—10:00 a.m.
 Morning Worship—11:00 a.m.
 Bro. Jerry Smith, 1st Sun.; Bro. Oscar Clark, 3rd Sun.

SHADY GROVE METHODIST CHURCH
 Rev. Erwin Dees, Pastor
 Preaching on 4th Sunday—10:00 a.m.

LAMB'S CHAPEL CHURCH
 Bro. W. E. Sharp, Pastor
 Sunday School—10 a.m.; Preaching Services: 1st Sun-
 day—11 a.m.; 3rd Saturday night—7 p.m.

MARIETTA METHODIST CHURCH
 Rev. John Millsaps, Pastor
 Sunday School 2nd and 4th Sunday—9:30 a.m.
 Sunday School 1st and 3rd Sunday—10:30 a.m.
 Preaching Services 1st & 3rd Sunday—9:30 a.m.

OAK GROVE METHODIST CHURCH
 Rev. Huey Wood, pastor
 Preaching services: first Sunday 9:00 a.m.,
 second Sunday 10:00 a.m.,
 fourth Sunday 6:30 p.m.,
 fifth Sunday 11:00 a.m.

EAST PRENTISS BAPTIST CHURCH
 Rev. Wallace Pannel, Pastor
 Sunday School—9:30 a.m.
 Preaching 2nd and 4th Sunday—2:00 p.m.
 Preaching 1st and 3rd Saturday—7:00 p.m.

OAK HILL BAPTIST CHURCH
 Rev. John Dugard, Pastor
 Sunday School—10 a.m.; Morning worship—11 a.m.
 Training Union—7 p.m.; Evening Worship—8 p.m.

TUSCUMBIA BAPTIST CHURCH
 Bro. Billy Hester, Pastor
 Sun. School—10:00 a.m.; Morning Worship—11 a.m.
 Evening Worship—7 p.m.; Training Union—6 p.m.
 Prayer Meeting—Wednesday, 7 p.m.

CROSS ROADS METHODIST CHURCH
 Rev. Huey Wood, Pastor
 1st Sunday—Morning Worship 10:00 a.m.
 2nd Sunday—Evening Worship 7:30 p.m.
 3rd Sunday—Morning Worship—11:00 a.m.
 Sunday Church School, 1st Sunday—11:00 a.m.
 Other Sundays—10:00 a.m.

NEW SITE BAPTIST CHURCH
 New Site — Bro. Joe Hughes, pastor
 Sunday School—10 a.m.
 Worship Service—1st Sunday at 2 p.m.

LITTLE BROWN FREEWILL BAPTIST CHURCH
 Rev. Buford Pierce, pastor
 Sunday School—10 a.m.
 Morning Worship—11 a.m.
 Evening Worship—7:00 p.m.

GASTON BAPTIST CHURCH
 Rev. W. Lamar Boothe, Pastor
 Sunday School—9:30 a.m.
 Morning Worship—10:30 p.m.
 Training Union—7:00 p.m.
 Evening Worship—8:00 p.m.
 Prayer Meeting—Wednesday 7:30 p.m.

FIRST FREEWILL BAPTIST CHURCH
 North Lake St. — Rev. J. L. Gore, Pastor
 Sunday School—10:00 a.m.
 Morning Worship—11:00 a.m.
 C. T. S. — 6:15 p.m.
 Evening Worship—7:00 p.m.
 Prayer Meeting—Wednesday 7:00 p.m.

CHURCH OF GOD
 ANTHONY LOMBARD, Pastor
 Sunday School—10:00 a.m.
 Morning Worship—11:00 a.m.
 Evening Worship—7:00 p.m.
 Prayer Meeting—Wednesday 7:00 p.m.

LIBERTY METHODIST CHURCH
 Hwy. 30 East — Ruth Wood, Pastor
 Morning Worship—9:45 a.m.
 Sunday School—11:00 a.m.
 M. Y. F. — 6:30 p.m.

OSBORNE CREEK BAPTIST CHURCH
 Rev. William Irwin, Pastor
 Sunday School—10:00 a.m.
 Morning Worship—11:00 a.m.
 Prayer Meeting—Thursday 6:30 p.m.

CRESTWOOD BAPTIST MISSION
 Rev. William Irwin, Pastor
 Sunday School—10:30 a.m.
 Morning Worship—9:30 a.m.
 Training Union — 6:30 p.m.
 Evening Worship—7:30 p.m.
 Prayer Meeting — Wednesday 7:00 p.m.

THRASHER BAPTIST CHURCH
 Rev. Dewey Wallis, Pastor
 Sunday School—9:00 a.m.
 Morning Worship—9:45 a.m. 2nd, 4th and 5th Sun-
 days.
 Evening Worship—6:00 p.m.—2nd, 4th and 5th
 Sundays.
 Training Union—Sunday 7:00 p.m.

SMITH CHAPEL FREEWILL BAPTIST CHURCH
 Rev. Arthur Dill, pastor
 Sunday School—10:00 a.m.
 Preaching each 1st and 3rd Sunday at 11 a.m.
 Singing on 2nd Sunday afternoon of each month.

MT. PLEASANT COMMUNITY CHURCH
 6 Miles E. of B'ville — Eld. R. J. Townsend, Pastor
 Church Services at 2:00 p.m. on the 1st Sunday.

FIRST UNITED PENTECOSTAL CHURCH
 Robert E. Fourbush, Pastor
 Sunday School — 9:45 a.m.
 Morning Worship — 11 a.m.
 Youth Services Sunday — 6:30 p.m.
 Evangelistic Service Sunday — 7:30 p.m.
 Prayer Service — Tuesday 7 p.m.
 Bible Study — Wednesday 7:30 p.m.

WHEELER PRIMITIVE BAPTIST CHURCH
 Elder James R. White, Pastor
 Bible Study—10 a.m.
 Morning Worship—2nd and 4th Sundays 11 a.m.
 Evening Worship—2nd and 4th Sundays 6:30 p.m.
 Fellowship Hour—Wed., before 2nd and 4th Sun-
 days, 7 p.m.

SNOWDOWN CHURCH OF CHRIST
 Jim Archer, Minister
 Sunday Bible School—10:00
 Morning Worship—11:00
 Evening Worship—6:30

MT. OLIVE CHURCH OF GOD
 Three Miles North of Altitude
 Bro. A. L. Marshall, Pastor
 Sat. night, Young People's meeting—7:30 p.m.
 Sunday School—9:45 a.m.
 Morning Worship—11 a.m.
 Evening Worship—6:30 p.m.
 Prayer Meeting—Wednesday at 7:30 p.m.

NEW BETHEL CHURCH OF CHRIST
 Bro. J. T. Smith, 1st Sun.
 2nd & 5th Sun., Bro. Tice; 3rd Sun., Bro. Foster
 Sunday Bible School—9:30
 Morning Worship—10:30

LITTLE CREEK BAPTIST CHURCH
 3 1/2 Miles North of Marietta
 Bro. R. C. Spencer, Pastor
 Sunday School — 10 a.m.
 Preaching Services, 1st and 3rd Sunday—11 a.m.
 Evening Worship, 1st and 3rd Sunday—7 p.m.
 Training Union—6:00 p.m.

MT. PISGAH FREEWILL BAPTIST CHURCH
 Rev. W. M. Briley, Pastor
 Sunday School — 10 a.m.
 Worship Service—11 a.m. and 6:30 p.m.
 Singing each 4th Sunday — 1 p.m.

INFANT OF PRAGUE CATHOLIC CHURCH
 Pastor — Rev. Patrick Tierney
 Masses: Thursday and Friday afternoons, 5:00 p.m.
 Sunday, 9:00 a.m. Confession before each Mass.

JUMPERTOWN METHODIST CHURCH
 Rev. Huey Wood, Pastor
 Sunday School—10 a.m. except 3rd Sunday 11 a.m.
 Morning Worship—3rd Sunday 10 a.m., 4th Sun-
 day 11 a.m.
 Evening Worship—1st Sunday 7:30 p.m.
 at 7 p.m. at 6:30 p.m.
 W.S.C.S. 3rd Sunday 7:30 p.m.
 Men's Club 4th Sunday 7:30 p.m.

THRASHER METHODIST CHURCH
 H. W. Lay, Pastor
 Sunday School—10:00 a.m.
 Worship Service—1st Sunday 7:30 p.m., Third
 Sunday 11 a.m., Fourth Sunday 9:45 a.m.
 Youth Fellowship—6:30 p.m.

BLYTHE CHAPEL METHODIST CHURCH
 Rev. Erwin Dees, Pastor
 Sunday School every Sunday at 10 a.m.
 Morning Worship every 1st Sunday at 11 a.m.
 Evening Worship every 3rd Sunday at 7 p.m.

THIS PAGE IS SPONSORED AND PAID FOR BY THE FOLLOWING:

Billingsley Chevrolet Co.

MasterSon, Inc.

Prentiss County Home Bank

Peoples Bank and Trust Co.

Coca-Cola Bottling Works
 Corinth

Pepsi-Cola

Chittom Milling Co.

North Miss. Savings & Loan

S. and J. Ready Mix

Pierce Repair Shop

Houston Shell Serv. Station

Drug Center

Town Motel

Liberty Cash Grocery

Blue Bell Employees

R. L. Long Ins. Agency

Booneville Steam Laundry
 and Cleaners

Altha Lodge Nursing Home

Booneville Floral Co.

Dobbins Spur Station

Young's Service Station

G. and W. Cleaners

Goddard Elec. Motor Repair

Farmers & Merchants Bank
 Baldwyn, Miss.

M. and H. Food Market

Wins Certificate In National Contest

From National V.F.W. Headquarters, Steve Goldman recently received a certificate of merit. The certificate read, "In recognition of excellence in the 1965-66 Voice of Democracy Contest. Steve is the son of Mr. and Mrs. Stanley Goldman and a senior at Thrasher High School."

Following is a copy of his speech. **DEMOCRACY — WHAT IT MEANS TO ME**

Let us first consider — What is Democracy? In the strictest sense it is rule by the people, but in the words of Lincoln, it is Government of the people, by the people, for the people.

A Democracy is a government that recognizes the dignity of all men. The history of American Democracy is as old, as man's desire to be free. Under this form of Government every citizen should be proud to say "I am an American".



STEVE GOLDMAN

When he makes this statement he means he is actually a part of the Government. His rights and privileges have been fought for and won through the ages by the lovers of freedom. These rights are protected for him and guaranteed to him by our constitution, the Supreme Law of the land.

When I unconsciously think of

Democracy I think in terms of America. Big wide wonderful land, which represents liberty, justice, freedom and brotherhood. America is so many wonderful things — the beauty of a red, white and blue flag flying over a free land, while church bells ring calling people to the church of their choice. It is a citizen voicing his opinion of government without fear. It is love, happiness and opportunity.

Then I think of the Liberty Bell on which some prophet inscribed these words, "Proclaim liberty throughout all the land unto all the inhabitants thereof." The bell tolls today — not in Philadelphia but in the hearts of all free people. It says to us, we have a good land, a God, blessed land, where people can be free to plan, to pray, and progress as an individual. Where he is more than a lump of clay in the hearts of some ruling tyrant. Then I see the Statue of Liberty and hear her say "Send these, the temptest tossed to me". Yes, these are shining symbols of freedom, the inspiration for which brave men have died.

We have a great stake in freedom and the free world has a stake in America's freedom. To keep our country free we must realize that our freedom is not free, for though we are the inheritors of freedom, unless we protect this gift, invest in it, and cherish it, we shall surely lose it. We must believe in our Democracy. We must live Democracy, and be prepared to defend it. By believing, living, and serving the cause of freedom, we can justify the sacrifices made by Americans who died to defend our constitution.

What can I do to build a strong Democracy? The principle thing any young person can do is educate himself. Jefferson said, "If we are to have a democracy, we must have an educated populace". We can learn of the workings of our government, use our rights of free speech and press. Freedom of speech and press are essential elements of a Democratic government and cultural progress.

As a young American I can concern myself with voting, for it is the privilege and duty of every citizen. The ballot box is the strong hold of a Democracy.

Young people, who attend school make-up an important part of the American population. They can not vote or hold office but they can make the community and nation a

better place to live. As young people our chief obligations are to our community.

We also must learn to be good citizens. To be a good citizen we must know about our government and our responsibility to it. First we must be good citizens in the home. One of the most important lessons in government can be learned at home that freedom and duty go together.

In the school the good citizen is one who does his work to the best of his ability, respects the rights of others and obeys the school rules. He will also vote in student elections. Student councils are of value to a school. They serve the school as Congress does the nation.

If we are to keep our land free and strong we must be ever watchful for forces which would destroy us. We have our precious liberties which are the envy of the world. Let us be worthy of our ancestors who gave this heritage to us. The foundation of this nation is based on a fundamental belief in God and the principles embodied in our constitution. "The Defender of American Democracy."

Steve Goldman

NOTICE TO BIDDERS

The Board of Supervisors of Prentiss County will, on October 7, 1966 at 11:00 o'clock A. M., receive bids for the purpose of purchasing for the Fifth District one heavy duty tractor equipped with tri-cycle front end, dual rear wheels and 40 to 60 horse power motor.

Bluford Allen
Clerk, Board of Supervisors
of Prentiss County 25-4tc

THE NEW SCHOOL YEAR IS HERE

Mississippi parents are reminded

that with a new school year at hand, we face the possible danger of disease outbreaks in our schools, plus an additional threat of disease germs being carried home to preschool and adult family members. The State Health Officer says this danger can be averted if all parents will review and up-date family immunizations. Mississippi's immunization services now rank among the top programs in the nation.

NOTICE TO CREDITORS

IN RE: WILL OF SAM D. GREEN, DECEASED

Letters testamentary having been granted on the 12 day of September, 1966, by the Chancery Court of Prentiss County, Mississippi, to the undersigned upon the estate of Sam D. Green, deceased, notice is hereby given to all persons having claims against said estate to present the same to the Clerk of said court for probate and registration, according to law, within six months from this date or they will be forever barred.

This the 12 day of September, 1966.

Maude Yates Green
Executrix 25-4tc

CHANCERY COURT SUMMONS

No. 8882

THE STATE OF MISSISSIPPI
TO: Mrs. Artie Bonds, Red Bay, Alabama;

Certain unknown heirs and distributees at law of the late Mrs. Oma Burns (last known whereabouts Houston, Texas) after diligent search and inquiry;
James F. Long, 3026 Clarendon Road, Memphis 18, Tennessee;
Roy H. Long, 2395 Wright Avenue, Pinole, California;

Billy W. Long, 568 N. Larmie, Chicago 44, Illinois;
Mrs. E. C. Randle, 108 Hiwassee Drive, Sheffield, Alabama;

Mrs. James Guinn, 6228 Harrison Street, Hammond, Indiana;
Freeman Gray, 3348 Beechmont, Memphis, Tennessee;

Mrs. Pauline Bryant, 1772 Regene, Wayne, Michigan;
Mrs. Burton Gray, Russellville, Alabama;

Mrs. Febie Hollaway, Hamilton, Alabama;
Mrs. E. O. Adams, 69 11th Avenue, Chickasaw, Alabama;

Mrs. Dimple Joyce Moore, Eagles Nest, New Mexico;
Certain unknown, non - resident

heirs of the late Opal Faye Chaney, names and whereabouts unknown after diligent search and inquiry;

Certain unknown, non - resident, heirs of the late Mrs. Mattie Bell Hurley, names and whereabouts unknown after diligent search and inquiry.

You are summoned to appear before the Chancery Court of the County of Prentiss, in said State,

on the 4th Monday of November (28th), 1966 to defend suit No. 8149, to show cause if any you can why the final account of the Estate of Mrs. Altie Gray Sparks, Deceased, should not be ratified and approved by said court.

This the 17th day of August, 1966.
Bluford Allen, Chancery
By: Eloise Maddox, D. C.
(SEAL) 22-4tc

Why They Stay With
(see ad elsewhere in this issue)



For All Saddles And Riding Needs We Give Miss Dixie Belle Stamps

Prentiss Hardware

EVERYTHING
FOR THE HUNTER

PRENTISS HARDWARE
Phone 728-4661

1934 - 1966
32 SEPTEMBERS

Thirty-two Septembers...have come and gone since The Peoples Bank and Trust Co. first opened its doors to the people of this area.

We are happy to have had a part in the growth of our City and County and as the fall season approaches, we look forward to serving our farmers, industries, businesses and individuals in the busy time ahead.

You'll enjoy our full-service banking in September...and the other 11 months of the year.

Thanks, and Thanks Again to all of our Friends and Customers who, by their confidence and patronage, have helped us attain our Constant and Steady Growth.

We Have Great Plans For You and Your Bank for the Future.

Harvest Time
Is Near



The PEOPLES BANK
and Trust Company

Member Federal Deposit Insurance Corporation



BIG "V" GROCERY and MARKET with SERVICE STATION
At Intersection Highways 4 & 30

WE GIVE S&H GREEN STAMPS

FLAVORITE SLICED BACON, lb.	65c
BOLOGNA, All Meat, lb.	49c
PURE PORK SAUSAGE, Bryan's, lb.	49c
JACK SPRAT TEA, 1/2 lb.	63c
CHASE & SANBORN - 10 OZ.	29c
Instant Coffee	\$1.35
Soap, 4 bars	35c

WITH \$5.00 ADDITIONAL PURCHASE — HUNT'S

PEACHES No. 2 1/2 Size **2 FOR 29c**

JACK SPRAT Pork & Beans, 30 oz. 19c	WAGNER'S Orange Drink, Qt. 29c
ROSE-DALE Peas, 300 size, 2 for 29c	CRACKER BARREL Crackers, lb. 23c
JACK SPRAT BLACK EYE Peas, 300 size, 2 for 29c	ALUMINUM Kaiser Foil, 25 ft. roll 25c

BAMA APPLE BASE

JELLIES, 18-oz. jars 4 for \$1.00

ALLEN'S 300 SIZE, GREEN Lima Beans 2 cans 29c	BUSH 300 SIZE, SPECKLED Butter Beans 2 for 23c
GEHART'S, IN CHILI SAUCE Tamales, No. 2 1/2 47c	BIG CHIEF Peanut Butter, 3 lbs. \$1.15

WITH \$5.00 ADDITIONAL PURCHASE — SUNFLOWER

MEAL 10 lbs. 49c

GREEN Cabbage, lb. 8c	Lemons, doz. 29c
RUSSET Potatoes, 5-lb. bag 39c	WHITE Onions, 3 lbs. 29c

FRESH LAID SMALL

EGGS, 3 Dozen \$1.15

VAN CAMP Tuna, 1/2 size, 2 for 47c

LUSTRE CREME Hair Spray 59c

GASOLINE AND ALL TOBACCO EXCLUDED FROM PURCHASE ITEMS

WE ARE OPEN EACH NIGHT UNTIL 8:00

CLOSED SUNDAYS FROM 10:00 A. M. 'TILL 2:00 P. M.

Prentiss ASCS County News

By CHARLES E. CALVERT, Office Manager

REVISED 1967 WHEAT ALLOTMENTS MAILED TO FARMERS

Revised farm allotments for the 1967 wheat crop have been mailed to growers in Prentiss County. The new allotments reflect the increase in the national wheat acreage allotment recently announced by the Secretary of Agriculture, which boosted the total to 68.2 million acres. This is 16.6 million acres, or 32 percent larger than the 1966-crop effective allotment.

Wheat price support loans, as well as the wheat marketing certificates on the part of the crop allocated for domestic food use, will be available on wheat planted on a farm that is signed up and participates in the 1967 wheat program. A farm's share of the domestic-food-use wheat will be 35 percent of the increased farm allotment's projected production for 1967.

The national average loan level for the 1967-crop wheat is \$1.25 per bushel; the domestic marketing certificates level will be based on 100 percent of parity as of July 1, 1967, less the announced \$1.25 per bushel loan value. (The certificate value for the 1966 wheat crop is \$1.32 per bushel. If the parity figure is the same next July, the certificates would bring returns of \$686 million to 1967-crop wheat producers.)

There is no wheat acreage diversion program for 1967, so land formerly diverted will be available for wheat or other crops. Farmers with small wheat allotments who in recent years have diverted wheat acreage for payment — from the minimum up to their entire acreage — will not be able to do the same in 1967.

The revised 1967-crop wheat allot-

ment for Mississippi is 70,664 acres. This compares with an allotment of 53,542 acres for the 1966 wheat crop.

FARMERS BEING ASKED FOR SOCIAL SECURITY NUMBERS

If the ASCS county office asks you what your Social Security number is, please don't think that you are being singled out for special attention. The number is needed by the Internal Revenue for identification purposes in connection with farm program payments.

Many farmers have already filed Form 3435-A with the county office, listing their social security or employer identification number. Requests for the information were mailed last fall to each known producer who received program payments. Producers who receive direct program payments and who have not yet filed the form, however, are asked to forward the information to the county office by October 1, 1966.

For 1966, ASCS must report to the Internal Revenue Service any sight draft payments of \$600 or more under direct payment programs. This includes the Agricultural Conservation Program, the feed grain, wheat, and cotton programs; the wool incentive payment program; and others.

And, beginning January 1, 1967, and each year thereafter, all such sight draft payments made to producers under these programs, will be reported to IRS without regard to the amount. Producers will be advised annually of the program payments reported to IRS, beginning with payments made in 1967.

Identifying numbers are already being used in payment reports which banks and other paying agencies make to IRS, as required under the Internal Revenue Code. Any question about this matter should be taken up with the ASCS County Committee.

The Southwest Quarter of the Prentiss County, Mississippi, rendered on the 31st day of August, 1966, the undersigned as Executor of the Last Will and Testament of Frank Owen, Deceased, will, on the 24th day of September, 1966, at the West front door of the Prentiss County Courthouse in the City of Booneville, Mississippi, within legal hours, offer for sale and sell to the highest and best bidder for cash the following described real estate situated in the County of Prentiss, State of Mississippi, to-wit:

The Southwest Quarter of the Southwest Quarter of Section 10, Township 6, Range 6, Prentiss County, Mississippi, being 40 acres, more or less.

ALSO: The Southeast Quarter of the Southwest Quarter of Section 10, Township 6, Range 6, Prentiss County, Mississippi, being 40 acres, more or less. By a further provision of said Decree, the undersigned, acting in the same capacity, will, on the 24th day of September, 1966, at the West front door of the Prentiss County Courthouse on Highway No. 30 West, Prentiss County, Mississippi, within legal hours, offer for sale and sell to the highest and best bidder for cash the following described articles of personal property:

Household furniture located in said house, household furnishings located in said house and other articles of personal property therein situated.

The above property is being sold for the purpose of partitioning among the heirs of the said estate, in accordance with the aforesaid Decree, and the title is believed to be good, but I will convey only such title as is vested in me as Executor of the Last Will and Testament of Frank Owen, Deceased.

Witness my hand and seal this 31st day of August, 1966.

Harry Cowan, Executor

23-4tc

State Fair Set For October 10-15

JACKSON — The biggest single event of the year, the Mississippi State Fair, opens its turnstiles Monday, October 10. In its 108th year, the State Fair still retains all the glamour, color and excitement Mississippians have enjoyed for more than a century.

The Beverly Hillbillies will be the chief attraction this year appearing Thursday, Friday and Saturday nights at 8:00 p.m. with "Granny" Irene Ryan and "Big Jethro" Max Baer. A complete cast of stars and variety entertainers is expected to make this the biggest hit of the fair. Tickets are \$1.00, \$2.00 and \$3.00 and may be obtained by writing Post Office Box 882, calling or coming by the State Fairgrounds in Jackson.

Premiums lists are up \$1,000 this year — to a total of more than \$37,000 in prizes.

Once again the midway will be dominated by more than 50 new rides and shows from Royal American for the most in fun and entertainment for the whole family.

People who collect old paper money are known by other collectors as "rag pickers."

NOTICE OF SALE IN RE: LAST WILL AND TESTAMENT OF FRANK OWEN, DECEASED

NO 8763

By virtue of a provision of a De-

County Budget Form "GF"

Final Estimates

PRENTISS COUNTY GENERAL FUND

BUDGET OF ESTIMATED RECEIPTS AND DISBURSEMENTS For Fiscal Year Ending September 30, 1967

ESTIMATED DISBURSEMENTS

(1) OFFICE AND ADMINISTRATION
(a) Salaries & Per Diem of Officials & Deputies: \$ 10,500.00
(b) Members of Board of Supervisors \$ 1,800.00
(c) Clerk of Board 1,050.00
(d) County Auditor and Treasurer 3,500.00
(e) County Registrar 2,400.00
(f) Tax Assessor and Deputies 6,592.00
(g) Clerk's Per Diem - Board Meetings 960.00
(h) Sheriff's Per Diem - Board Meetings 600.00
(i) Clerical 60.00

\$ 27,462.00

(2) General Office Supplies and Expenses:

(a) Stationery & Other Office Supplies \$ 6,483.00
(b) Record Books, Binders, Printed Forms 6,297.74
(c) Postage, Telephone Service 3,220.28
(d) Repair of Office Equipment 491.00
(e) Replacement of Office Equipment 1,082.00
(f) Premium on Surety Bonds 1,369.00
(g) Sundry 80.00

\$ 19,023.02

(3) Other Office and Administrative Expenses:

(a) Legal Advertising and Publishing \$ 1,676.59
(b) Special Legal Service 300.00
(c) State Audit Service 750.00
(d) Elections 3,600.00
(e) Copying Tax Rolls 1,450.00
(f) Allowances Servicing Homestead Exemptions: Clerk, Tax Assessor, Sheriff 5,203.34
(g) Social Security (County's Share) 3,500.00
(h) State Retirement (County's Share) 3,500.00
(i) Sundry (Per Account Classification) 472.46

21,452.39

Total Budgeted Disbursements for Office and Administration \$ 67,937.41

2. JUDICIAL, LUNACY, AND IMPRISONMENT COSTS

(1) Courts:
(a) Chancery 3,000.00
(b) Circuit 17,000.00
(c) County 3,000.00
(d) J.P. and Other Law Enforcement Agencies 10,000.00

30,000.00

(2) Lunacy Cases:

Fees, Allowances, Transportation 2,434.15

(3) Imprisonment Costs:

Food, Clothing, Medical Care and Other 5,661.38

Total Budgeted Disbursements for Courts, Lunacy, Imprisonment \$ 38,095.53

3. HEALTH AND SANITATION

(a) Personal Service \$

(b) General Expense and Supplies 600.00

(c) Vital Statistics 13,000.00

(d) Support of Health Unit 600.00

(e) Other Health Service 13,600.00

Total Budgeted Disbursements for Health and Sanitation \$ 13,600.00

4. CHARITIES AND PUBLIC WELFARE

(a) Support of Paupers 14,000.00

(b) Contribution to Charity Hospitals 2,714.75

(c) Contribution to T. B. Patients 3,195.52

(d) Pro rata of Dept. of Welfare Expense 3,195.52

STATE FARM Insurance Co.

Auto - Life - Fire
and Casualty
"GO" Insurance
One day to six
months.

MEDI-CASH

State Farm's new hospital
policy pays you IN CASH while
you or any qualified member of
your family is hospitalized.

Dalton T. Wallis Agent

PHONE:
Day, 728-4651
Night, 728-4779

e. All Other	
Total Budgeted Disbursements for Charities and Public Welfare	\$ 19,910.27
5. FARM AND HOME SERVICE	
a. Salary	8,000.00
b. General Expenses	400.00
c. Appropriation for Fairs, L. S. Shows	1,200.00
d. Advertising Resources	
e. Other P. and H. Service Costs	
Total Budgeted Disbursements for Farm and Home Service	\$ 9,600.00
6. MAINTENANCE AND OPERATION OF PUBLIC BUILDINGS	
a. Salaries-Janitors and Other	1,870.00
b. Janitorial Supplies	3,975.93
c. Heat, Light, Water	2,340.02
d. Insurance	59.15
e. Repairs and Replacements	2,500.00
f. Sundry	43.40
Total Budgeted Disbursements for Maint. and Opr. of Buildings	\$ 10,788.50
7. LIBRARY AND OTHER PUBLIC SERVICE	
a. Appropriation for Support of Library	11,330.52
b. Appropriation for Civic and Patriotic Organizations	500.00
c. All Other Public Service	3,335.51

Total Budgeted Disbursements for Library, etc.	\$ 15,166.03
8. NON-OPERATING DISBURSEMENTS AND CAPITAL OUTLAY	
a. Debt Retirement	
b. Construction Projects and Permanent Improvements	
c. All Other Public Service	
Total Budgeted Disbursements for Capital Outlay, etc.	\$ 175,097.74
TOTAL YEAR BUDGETED DISBURSEMENTS FROM GENERAL FUND FOR ALL PURPOSES	\$ 175,097.74

3. General Fund	
ESTIMATED GENERAL FUND RECEIPTS	
1. LOCAL SOURCES: Property Tax	100,000.00
a. Dealers Privilege License	2,000.00
b. Mineral Lease Tax	
c. Fines and Forfeits	3,500.00
d. Interest on Deferred Tax Payments	
e. Other Local Sources L. Red.	1,000.00
Total Estimated Receipts from Local Sources Other Than Taxation	\$ 138,000.00
2. STATE AND OTHER OUTSIDE SOURCES:	
a. Severance Tax (Oil, Timber & Gas)	228.00
b. Homestead Exemption Reimbursement	28,000.00
c. TVA Lieu Tax	4,508.00
d. Other Outside Aid	
Total Estimated Receipts from Outside Sources	170,736.00
Total Estimated Receipts from All Sources Except Taxation	4,361.74
Add Unencumbered Cash Balance from Preceding Year	
Total (Unencumbered Cash Plus Total Estimated Receipts)	\$
AMOUNT NECESSARY TO BE RAISED BY TAX LEVY TO FINANCE THE OPERATION OF THE GENERAL FUND	175,097.74
TOTAL CASH AND ESTIMATED RECEIPTS FROM ALL SOURCES	\$ 175,097.74*

*This amount should equal the amount representing the total of estimated disbursements.
County Budget Form "RF"
Final Estimates

PRENTISS COUNTY ROAD AND BRIDGE FUNDS BUDGET OF ESTIMATED RECEIPTS AND DISBURSEMENTS For Fiscal Year Ending September 30, 1967

ESTIMATED DISBURSEMENTS	
1. MAINTENANCE COSTS	4,500.00
a. Supervision (Supervisors, Engineer)	2,450.00
b. Salary and Wage (Road Employees)	14,000.00
c. Maintenance Materials and Supplies	15,026.72
d. Petroleum Products (Gasoline, Oil)	10,131.10
e. Machinery Repair, Upkeep and Rental	11,083.04
f. Other Operating Costs, Including County's Share of State Retirement and Social Security	1,400.66
Total Budgeted Disbursements for Purposes of Maintaining Roads and Bridges	\$ 58,591.52
2. CAPITAL OUTLAY	
a. Construction Projects (Other Than State Aid)	
b. Purchases of Road Machinery and Equipment	2,000.00
c. Debt Retirement	6,000.00
d. Other Non-Operating and Capital Outlay Disbursements	
Total Budgeted Disbursements for Capital Outlay	8,000.00
TOTAL YEAR BUDGETED DISBURSEMENTS FROM FIRST DISTRICT ROAD FUND	\$ 66,591.52

ESTIMATED RECEIPTS	
SOURCE AND KIND	
1. Local Sources: Property Tax	6,200.00
a. Auto Road and Bridge Privilege Tax	11,522.22
b. All Other Local Sources	798.54
Total Estimated Receipts from Local Sources Other Than Taxation	18,520.76
2. State and Other Outside Sources:	
a. Gasoline Excise Tax	37,274.05
b. Truck and Bus Privilege Tax	6,340.52
c. Severance Tax (Oil, Timber and Gas)	4,156.19
d. Homestead Exemption Reimbursement	300.00
e. Other Receipts from Outside Sources	
Total Estimated Receipts from State & Other	66,591.52
Total Estimated Receipts from All Sources Other Than Taxation	
Add Unencumbered Cash Balance from Preceding Year	
Total Cash and Estimated Receipts Other Than Adv. Tax	\$ 18,520.76
Amt. Necessary to be Raised by Tax Levy	\$ 66,591.52*
Total Cash and Estimated Receipts	\$ 66,591.52*
*This amount should equal the amount representing the total of estimated disbursements.	
County Budget Form "RF"	
Final Estimates	

PRENTISS COUNTY ROAD AND BRIDGE FUNDS BUDGET OF ESTIMATED RECEIPTS AND DISBURSEMENTS For Fiscal Year Ending September 30, 1967	
ESTIMATED DISBURSEMENTS	
1. MAINTENANCE COSTS	4,500.00
a. Supervision (Supervisors, Engineer)	2,450.00
b. Salary and Wage (Road Employees)	12,000.00
c. Maintenance Materials and Supplies	15,026.72
d. Petroleum Products (Gasoline, Oil)	10,131.10
e. Machinery Repair, Upkeep & Rental	11,083.04
f. Other Operating Costs, Including County's Share of State Retirement and Social Security	1,400.66
Total Budgeted Disbursements for Purposes of Maintaining Roads and Bridges	\$ 56,591.52
2. CAPITAL OUTLAY	
a. Construction Projects (Other Than State Aid)	
b. Purchases of Road Machinery and Equipment	4,000.00
c. Debt Retirement	6,000.00
d. Other Non-Operating and Capital Outlay Disbursements	
Total Budgeted Disbursements for Capital Outlay	7,000.00
TOTAL YEAR BUDGETED DISBURSEMENTS FROM 2ND DISTRICT ROAD FUND	\$ 66,591.52

ESTIMATED RECEIPTS	
SOURCE AND KIND	
1. Local Sources: Property Tax	6,200.00
a. Auto Road and Bridge Priv. Tax	11,522.22
b. All Other Local Sources	798.54
Total Estimated Receipts from Local Sources	\$ 18,520.76
2. State and Other Outside Sources:	
a. Gasoline Excise Tax	33,904.01
b. Truck and Bus Privilege Tax	6,340.48
c. Severance Tax (Oil, Timber & Gas)	4,056.20
d. Homestead Exemption Reimbursement	35,000.00
e. Other Receipts from Outside Sources	
Total Estimated Receipts from State & Other	79,300.69
Total Estimated Receipts from All Sources Other Than Taxation	5,000.00
Add Unencumbered Cash Balance from Preceding Year	
Total Cash & Est. Receipts Other Than Adv. Tax	\$ 18,520.76
Amount Necessary to be Raised by Tax Levy	\$ 66,591.52*
Total Cash and Est. Receipts from All Sources	\$ 66,591.52*
*This amount should equal the amount representing the total of estimated disbursements.	
County Budget Form "RF"	
Final Estimates	

PRENTISS COUNTY ROAD AND BRIDGE FUNDS BUDGET OF ESTIMATED RECEIPTS AND DISBURSEMENTS For Fiscal Year Ending September 30, 1967	
ESTIMATED DISBURSEMENTS	
1. MAINTENANCE COSTS	4,500.00
a. Supervision (Supervisors, Engineer)	2,450.00
b. Salary and Wage (Road Employees)	12,000.00
c. Maintenance Materials and Supplies	15,026.72
d. Petroleum Products (Gasoline, Oil)	10,131.10
e. Machinery Repair, Upkeep & Rental	11,083.04
f. Other Operating Costs, Including County's Share of State Retirement and Social Security	1,400.66
Total Budgeted Disbursements for Purposes of Maintaining Roads and Bridges	\$ 56,591.52
2. CAPITAL OUTLAY	
a. Construction Projects (Other Than State Aid)	
b. Purchases of Road Machinery and Equipment	4,000.00
c. Debt Retirement	6,000.00
d. Other Non-Operating and Capital Outlay Disbursements	
Total Budgeted Disbursements for Capital Outlay	7,000.00
TOTAL YEAR BUDGETED DISBURSEMENTS FROM 2ND DISTRICT ROAD FUND	\$ 66,591.52

ESTIMATED RECEIPTS	
SOURCE AND KIND	
1. Local Sources: Property Tax	6,200.00
a. Auto Road and Bridge Priv. Tax	11,522.22
b. All Other Local Sources	798.54
Total Estimated Receipts from Local Sources	\$ 18,520.76
2. State and Other Outside Sources:	
a. Gasoline Excise Tax	33,904.01
b. Truck and Bus Privilege Tax	6,340.48
c. Severance Tax (Oil, Timber & Gas)	4,056.20
d. Homestead Exemption Reimbursement	35,000.00
e. Other Receipts from Outside Sources	
Total Estimated Receipts from State & Other	79,300.69
Total Estimated Receipts from All Sources Other Than Taxation	5,000.00
Add Unencumbered Cash Balance from Preceding Year	
Total Cash & Est. Receipts Other Than Adv. Tax	\$ 18,520.76
Amount Necessary to be Raised by Tax Levy	\$ 66,591.52*
Total Cash and Est. Receipts from All Sources	\$ 66,591.52*
*This amount should equal the amount representing the total of estimated disbursements.	
County Budget Form "RF"	
Final Estimates	

PRENTISS COUNTY ROAD AND BRIDGE FUNDS BUDGET OF ESTIMATED RECEIPTS AND DISBURSEMENTS For Fiscal Year Ending September 30, 1967	
ESTIMATED DISBURSEMENTS	
1. MAINTENANCE COSTS	4,500.00
a. Supervision (Supervisors, Engineer)	2,450.00
b. Salary and Wage (Road Employees)	14,000.00
c. Maintenance Materials and Supplies	15,026.72
d. Petroleum Products (Gasoline, Oil)	10,131.10
e. Machinery Repair, Upkeep and Rental	11,083.04
f. Other Operating Costs, Including County's Share of State Retirement and Social Security	1,400.66
Total Budgeted Disbursements for Purposes of Maintaining Roads and Bridges	\$ 56,591.52
2. CAPITAL OUTLAY	
a. Construction Projects (Other Than State Aid)	
b. Purchases of Road Machinery and Equipment	4,000.00
c. Debt Retirement	6,000.00
d. Other Non-Operating and Capital Outlay Disbursements	
Total Budgeted Disbursements for Capital Outlay	7,000.00
TOTAL YEAR BUDGETED DISBURSEMENTS FROM 2ND DISTRICT ROAD FUND	\$ 66,591.52

ESTIMATED RECEIPTS	
SOURCE AND KIND	
1. Local Sources: Property Tax	6,200.00
a. Auto Road and Bridge Priv. Tax	11,522.22
b. All Other Local Sources	798.54
Total Estimated Receipts from Local Sources	\$ 18,520.76
2. State and Other Outside Sources:	
a. Gasoline Excise Tax	33,904.01
b. Truck and Bus Privilege Tax	6,340.48
c. Severance Tax (Oil, Timber & Gas)	4,056.20
d. Homestead Exemption Reimbursement	35,000.00
e. Other Receipts from Outside Sources	
Total Estimated Receipts from State & Other	79,300.69
Total Estimated Receipts from All Sources Other Than Taxation	5,000.00
Add Unencumbered Cash Balance from Preceding Year	
Total Cash & Est. Receipts Other Than Adv. Tax	\$ 18,520.76
Amount Necessary to be Raised by Tax Levy	\$ 66,591.52*
Total Cash and Est. Receipts from All Sources	\$ 66,591.52*
*This amount should equal the amount representing the total of estimated disbursements.	
County Budget Form "RF"	
Final Estimates	

PRENTISS COUNTY ROAD AND BRIDGE FUNDS BUDGET OF ESTIMATED RECEIPTS AND DISBURSEMENTS For Fiscal Year Ending September 30, 1967	
ESTIMATED DISBURSEMENTS	
1. MAINTENANCE COSTS	4,500.00
a. Supervision (Supervisors, Engineer)	2,450.00
b. Salary and Wage (Road Employees)	14,000.00
c. Maintenance Materials and Supplies	15,026.72
d. Petroleum Products (Gasoline, Oil)	10,131.10
e. Machinery Repair, Upkeep and Rental	11,083.04
f. Other Operating Costs, Including County's Share of State Retirement and Social Security	1,400.66
Total Budgeted Disbursements for Purposes of Maintaining Roads and Bridges	\$ 56,591.52
2. CAPITAL OUTLAY	
a. Construction Projects (Other Than State Aid)	
b. Purchases of Road Machinery and Equipment	4,000.00
c. Debt Retirement	6,000.00
d. Other Non-Operating and Capital Outlay Disbursements	
Total Budgeted Disbursements for Capital Outlay	7,000.00
TOTAL YEAR BUDGETED DISBURSEMENTS FROM 2ND DISTRICT ROAD FUND	\$

Retired Persons To Have Fall Meeting

Tupelo, Miss. — The Tupelo Area

Save Today
With
(see ad elsewhere in
this issue)



Chapter of the American Association of Retired Persons will meet for its first fall assembly at 11:45 A. M. Tuesday, September 20, at Natchez Trace Inn, according to Paul F. Newell, chapter president. This meeting, he says, marks the first anniversary of the local chapter which has grown to forty active members during the year.

The luncheon meeting will consider a slate of programs for the

months ahead, hear a report on the recent National Convention of the AARP at Salt Lake City by the official delegate.

In addition, a most interesting address by Hon. Byrd P. Mauldin, a prominent attorney and civic leader of Pontotoc, will be a feature. His subject, Mineral Resources of Mississippi, will reveal many important facts not generally known about the State's mineral wealth. Mr. Mauldin is a member of the State Oil and Gas Board.

Several new members who joined during the summer will attend for their first meeting. Also prospective members who have shown an interest in the Association's work and programs have been invited and are expected to attend. AARP members are making retirement a new career.

An alcoholic beverage made of fermented honey and water is known as mead.

Orchestra leader Fred Waring has been in show business 50 years.

VA Answers Vets Questions

EDITOR'S NOTE: Veterans and their families are asking thousands of questions concerning the benefits their Government provides for them through Veterans Administration. Below are some representative queries. Additional information may be obtained at any VA office.

Q — I receive a pension from the Veterans Administration. I have some money in the bank and I was wondering if I have to report the interest on the account to the VA?

A — All income, including interest from bank accounts, must be reported to the VA in the year received.

Q — Can I attend a trade school overseas under the new G. I. Bill?

A — A program of education may be pursued only at an approved educational institution of higher learning overseas.

Q — I bought a home with a G. I. loan in 1952. My wife is now confined to a wheel chair, and cannot maneuver steps to the basement or to the second floor. Can I sell this home and buy another one-story home with a G. I. loan?

A — Your wife's disability is a compelling reason for selling your present home. But the VA must be released from all financial liability on the first property. Contact your VA Regional Office for details.

NOTICE TO BIDDERS
On October 3, 1966 at 11:00 o'clock A.M. the Board of Supervisors will offer for sale one 1956 International truck, Model 170, the property of the Fifth District.

And the Board will also on said date receive bids for the purpose of purchasing one used 2 Ton Truck for the Fifth District.

Bluford Allen
Clerk of the Board

EXECUTOR'S NOTICE TO CREDITORS
RE: LAST WILL AND TESTAMENT OF MRS. LETHA WALDEN, DECEASED. NO. 8887

Letters Testamentary having been granted on September 6, 1966 by the Chancery Court of Prentiss County, Mississippi to the undersigned as Executor of the Estate of Mrs. Letha Walden, deceased, notice is hereby given to all persons having claims against said estate to present the same to the Clerk of said Court for probate and registration according to law, within six months from this date, or they will be forever barred.

This September 8, 1966.
MYRL WALDEN, EXECUTOR

Camels are still used for transportation in Mongolia.

Kaabe Indians that inhabited British Columbia are now extinct.

NOTICE TO CONTRACTORS

Sealed bids will be received by the State Highway Commission, Jackson, Mississippi until 10:00 o'clock A.M., Tuesday, September 27, 1966 for Construction of Incident-Grading and Shoulders; H-01 Plant Mix Pavement on 3.00 Miles of U. S. Highway No. 45 between Booneville and the Alcorn County Line in Prentiss County, known as State Project No. SP-0002-5(1).

Contract Time: 75 Working Days. Certified check or bid bond for five percent (5%) of bid must accompany each proposal.

Proposal and detailed information may be secured from the Office Engineer.

T. C. Robbins, Director

A 41-hour work week has been promised Russian workers by 1970.

CHANCERY COURT SUMMONS
No. 8872
THE STATE OF MISSISSIPPI,
To J. C. Long, Street Address Unknown, P. O. Address, Hammond, Louisiana.

You are commanded to appear before the Chancery Court of the

County of Prentiss, in said State, on the 2nd Monday of October A.D., 1966 (Rules) to defend the suit in said Court of The Perdue Elevator Company, Inc., wherein you are a Defendant.

This 18th day of August A.D., 1966.

Bluford Allen, Clerk
By: Eloise Maddox, D. C.
(SEAL) 24-ffc

ADMINISTRATRIX' NOTICE TO CREDITORS

NO. 8883
Letters of Administration having

been granted on the 20th day of August, 1966 by the Chancery Court of Prentiss County, Mississippi, to the undersigned upon the Estate of W. K. Harris, deceased, notice is hereby given to all persons having claims against said estate to present the same to the Clerk of said Court for probate and registration according to law, within six months from this date, or they will be forever barred.

This August 25, 1966.

MRS. LURA HARRIS, Administratrix. 24-ffc

SHERIFF'S SALE OF LAND FOR TAXES, PRENTISS COUNTY

THE STATE OF MISSISSIPPI

COUNTY OF PRENTISS

I, Gerald Green, Tax Collector of the County of Prentiss, in said State will sell on the 3rd Monday of September A.D., 1966, at the Front door of the Court House of said County, in the City of Booneville, Mississippi, to the highest bidder or bidders, for cash, if any there be, all the following described lands, situated in said County, on which the taxes remain unpaid at that date to-wit:

Name of Owner — Division of	Sec.	T.S.	Rge.	Acres	Valu- ation	Co. Tax	Sheriff's Costs	Ptr's. Fee	Chancery Damages	Chk's. Cost	Int.	Grand Total
1. Alexander, Anna Cothran—Pt. NW¼ Wroten	10	5	7		440	13.42	1.25	1.00	.27	.10	.47	16.51
2. Allen, Ben—Pt. SW¼ Miller					100	7.55	1.25	1.00	.15	.10	.26	10.31
3. Allen, Roy—Pt. SW¼ Wroten	15	5	7		600	45.30	1.25	1.00	.91	.10	1.59	50.15
5. Baptist, Jeremiah—Pt. SW¼ Miller	10	5	7		400	12.20	1.25	1.00	.24	.10	.43	15.22
6. Betts, Forest—Pt. SW¼ Miller	10	5	7		500	37.75	1.25	1.00	.76	.10	1.32	42.18
7. Christian, Elizabeth—Pt. NW¼ Wroten	10	5	7		150	11.33	1.25	1.00	.23	.10	.40	14.31
8. Cole, Ethel—Pt. SW¼ Miller	10	5	7		100	7.55	1.25	1.00	.15	.10	.26	10.31
9. Comer, Thomas—Unn. Pt. NW¼ Wms.	16	5	7		1600	48.80	1.25	1.00	.45	.10	1.71	53.84
10. Comer, Thomas—Pt. 1, 2, 3 Wms. Bk. 5					1670	126.09	1.25	1.00	2.52	.10	4.41	135.37
11. Comer, W. H.—Pt. Wms. Bk. 35½					1500	45.75	1.25	1.00	.92	.10	1.60	50.62
12. Dent, Mose—Pt. SW¼ Miller	10	5	7		120	3.66	1.25	2.00	.07	.10	.13	6.21
13. Duboise, Annie Lou—S & E½ Wms. Bk. 25					500	37.75	1.25	1.00	.76	.10	1.32	42.18
14. Edmonds, Emma D. Pt. SW¼ Miller	10	5	7		200	15.10	1.25	1.00	.30	.10	.53	18.28
15. Elder, Mary, Hinds, Bessie & Clara—Pt. NW¼ Miller	10	5	7		50	3.78	1.25	1.00	.08	.10	.13	6.34
18. Hudson, Andrew—Pt. SW¼ Miller	10	5	7		150	11.33	1.25	1.00	.23	.10	.40	14.31
19. Johnson, Bud Est.—Pt. SW¼ Miller	10	5	7		200	15.10	1.25	1.00	.30	.10	.53	18.28
20. Johnson, Oscar—Miller Pt. SW¼	10	5	7		250	7.63	1.25	1.00	.15	.10	.27	10.40
21. Jones, Bobby Lee—Miller, Pt. SW¼	10	5	7		300	22.65	1.25	1.00	.45	.10	.79	26.24
23. Lee, Arthur & Lunar—Pt. SW¼ Miller	10	5	7		200	15.10	1.25	1.00	.30	.10	.53	18.28
25. Mid-State Homes—Pt. NE¼ Wroten	15	5	7		300	22.65	1.25	1.00	.45	.10	.79	26.24
26. McCloud, Marie, Et al—Pt. SW¼ Miller	10	5	7		30	2.27	1.25	1.00	.05	.10	.08	4.75
27. McGee, Luther—Pt. NW¼ Wroten	10	5	7		450	33.98	1.25	1.00	.68	.10	1.19	39.20
28. O'Neil, Jim B.—Pt. SW¼ Miller	10	5	7		500	37.75	1.25	1.00	.76	.10	1.32	42.18
29. Pierce, A. S.—Pt. SW¼ Miller	10	5	7		50	3.78	1.25	1.00	.08	.10	.13	6.34
30. Pierce, Tyson—Pt. NW¼ Wroten	10	5	7		150	4.58	1.25	1.00	.09	.10	.16	7.18
31. Ray, Etoy—Pt. SE¼ Wroten	10	5	7		100	7.55	1.25	1.00	.15	.10	.26	10.31
32. Reynolds, Lena—Pt. NE¼ Wroten	15	5	7		250	18.88	1.25	1.00	.38	.10	.66	22.27
33. Roberts, A. J.—NE¼ Wroten	15	5	7		150	11.33	1.25	1.00	.23	.10	.40	14.31
34. Robinson, Lula—Pt. NW¼ Wroten	10	5	7		150	11.33	1.25	1.00	.23	.10	.40	14.31
35. Slayton, L. A.—Lt. 73 Shinaut Hts.					1100	83.04	1.25	1.00	1.66	.10	2.91	89.97
36. Slayton, L. A.—Pt. SW¼ Wroten	15	5	7		800	60.40	1.25	1.00	1.21	.10	2.11	66.01
37. Strange, Bobby—Pt. NW¼ Wms. Unn.	16	5	7		700	21.35	1.25	1.00	.43	.10	.75	24.98
38. Bald, Brick & Tile Co.—Pt. NW¼ Bald.	36	6	6		480	23.76	1.25	1.00	.48	.10	.83	27.42
39. Bald, Brick & Tile Co.—Pt. NW¼ Bald.					750	37.13	1.25	1.00	.74	.10	1.30	41.52
40. Bald, Grain Elevator Co.—Pt. Bald. Bk. 32					300	14.85	1.25	1.00	.30	.10	.52	18.62
41. Bishop, Ruby—Pt. NE¼ Bald.	35	6	6		300	7.35	1.25	1.00	.15	.10	.26	10.11
42. Bradley, Charlie—Pt. NW¼ Bald.	35	6	6		300	7.35	1.25	1.00	.15	.10	.26	10.11
43. Copeland, Wiley—Pt. SE¼ Bald.	35	6	6		140	3.43	1.25	1.00	.07	.10	.12	5.97
44. Harris, Claiborne Est.—Pt. SE¼ Bald.	35	6	6		100	4.95	1.25	1.00	.10	.10	.17	7.57
45. Leonard Investment Corp.—Pt. SW¼ Bald.	35	6	6		350	17.33	1.25	1.00	.35	.10	.61	20.64
47. Savery, J. L.—Pt. NW¼ Bald.	36	6	6		200	9.90	1.25	1.00	.20	.10	.35	12.80
48. Savery, J. L.—Pt. NW¼ Bald.	36	6	6		100	4.95	1.25	1.00	.10	.10	.17	7.57
49. Savery, J. L.—Pt. NW¼ Bald.	36	6	6		800	39.60	1.25	1.00	.79	.10	1.39	44.13
50. Stone, J. B. — Lt. 7 Park View S/D Bald. SW¼					1000	24.50	1.25	1.00	.49	.10	.86	28.20
51. Washington, Gabe—Bald. SE¼	25	6	6		200	9.90	1.25	1.00	.20	.10	.35	12.80
52. Akins, G. L.—Pt. 2 Bell Bk. 1					40	3.26	1.25	1.00	.07	.10	.11	5.79
53. Lindsey, Robert Earl—Lt. 5 NE¼ Wheeler	7	6	7		50	4.08	1.25	1.00	.08	.10	.15	6.66
54. Pannell, Barney—1 A. NW¼	13	6	5	1	220	17.95	1.25	1.00	.36	.10	.63	21.29
55. Jim Walters—Pt. SE¼	13	6	5	6/10	30	2.47	1.25	1.00	.05	.10	.09	4.06
56. Walden, Earl J.—Pt. SE¼	13	6	5	½	130	10.61	1.25	1.00	.21	.10	.37	13.54
57. Ardis, Victor—Pt. SE¼	13	6	5	2 2/10	50	4.12	1.25	1.00	.08	.10	.14	6.69
58. United States Finance Co.—Pt. SE¼	13	6	5	3/10	190	15.49	1.25	1.00	.31	.10	.54	18.69
59. Patterson, Lorine—Pt. SE¼	13	6	5		190	7.90	1.25	1.00	.16	.10	.28	10.69
60. Blankenship & Pennington, Ralph—W½ SE¼	25	6	5	80	500	41.93	1.25	1.00	.84	.10	1.47	46.59
63. Eaton, E. A.—Pt. SW¼	22	4	6	3	30	2.33	1.25	1.00	.05	.10	.08	4.81
64. McVey, Jasper—1 A. SE¼	28	4	6	1	220	16.63	1.25	1.00	.33	.10	.58	19.59
65. Mayo, Everett—1 A. Pt. SE¼	28	4	6	1	220	16.63	1.25	1.00	.33	.10	.58	19.59
66. Smith, Mrs. Frank—Pt. SE¼	28	4	6	5	110	8.41	1.25	1.00	.17	.10	.29	11.22
67. Fed. Quality Home—Pt. SE 1/4	28	4	6		20	1.53	1.25	1.00	.03	.10	.05	3.96
68. Dixie Acceptance Corp.—Pt. N½ SE¼	5	5	6	½	170	12.85	1.25	1.00	.26	.10	.45	15.91
69. Mid-State Home—1 A. SW¼	6	5	6	1	20	1.53	1.25	1.00	.03	.10	.05	3.96
70. Mid-State Home—1 A. Pt. SE¼	16	5	6	1	210	15.99	1.25	1.00	.32	.10	.56	19.22
72. Curlee, John—SE¼	36	5	6		200	15.20	1.25	1.00	.30	.10	.53	18.38
73. Jumper, Dexter—Lt. 30, 31, 32, 33	36	5	6		100	7.60	1.25	1.00	.15	.10	.27	10.37
74. Huddleston, Homer—Lt. 50, 52, 54, 56					50	3.81	1.25	1.00	.08	.10	.13	6.37
76. Franks, William—Pt. NE¼	11	6	6	1/8	450	36.68	1.25	1.00	.73	.10	1.28	41.04
79. Hall, Archie—SW Pt. SE¼	26	6	6	2 6/10	350	14.59	1.25	1.00	.29	.10	.51	17.74
80. Saylor, Bobby—Pt. NE¼ SW¼	27	6	6	6/10	180	4.97	1.25	1.00	.29	.10	.51	17.82
81. Deeb Const. Co.—1 A. Pt. SW¼	27	6	6	1	250	20.40	1.25	1.00	.41	.10	.71	23.87
82. Starling, Booker E.—1 A. Pt. NW¼	29	6	6	1	250	10.40	1.25	1.00	.21	.10	.36	13.32
87. Mears, William—Pt. N½ NE¼	33	6	6	1	300	12.47	1.25	1.00	.25	.10	.44	15.51
88. Sorrell, Ester Lee—Pt. NW¼	10	4	7	20	340	25.69	1.25	1.00	.51	.10	.90	29.45
92. Family Mtg. Co.—Pt. NW¼	26	4	7	½	220	16.62	1.25	1.00	.33	.10	.58	19.88
94. Ware, T. C.—1 1/10 Pt. NW¼	7	5	7	1 1/10	230	17.51	1.25	1.00	.35	.10	.61	20.82
95. Jim Walter—Pt. NW¼	7	5	7	½	180	13.69	1.25	1.00	.27	.10	.48	16.79
96. Strickland, Lister Jr.—Pt. NW¼	7	5	7	½	30	2.30	1.25	1.00	.05	.10	.08	4.78
99. Warren, Ozella Est.—Pt. NE¼	10	5	7	1000	75.63	1.25	1.00	1.51	.10	2.65	82.14	
100. Mobley, Henry—Pt. NE¼	10	5	7	7 7/8	170	13.00	1.25	1.00	.26	.10	.46	16.07
103. Bearden, Willie—Pt. NE¼	10	5	7	4/5	150	11.35	1.25	1.00	.23	.10	.40	14.33
104. Lambert, John—1 A. Pt. SE¼	10	5	7	1	250	18.90	1.25	1.00	.38	.10	.66	22.29
105. Richardson, Harold D.—Pt. NW¼	11	5	7	8/10	250	18.90	1.25	1.00	.38	.10	.66	22.29
106. Hathcock, Minnie—Pt. NW¼	11	5	7	¾	300	22.65	1.25	1.00	.45	.10	.79	26.24
107. Mid-State Home—½ A. NW¼	11	5	7	¾	270	20.39	1.25	1.00	.41	.10	.71	23.85
108. Mobley, Henry—Pt. NW¼	12	5	7	80	400	31.80	1.25	1.00	.64	.10	1.11	35.90
110. Gann, Walter—Pt. SE¼	15	5	7	¾	300	9.15	1.25	1.00	.18	.10	.32	12.00
111. Bryson, John E.—Pt. NE¼	20	5	7	9/12	2200	68.39	1.25	1.00	1.37	.10	2.35	74.50
112. Wileman, G. L.—Pt. NE¼	21	5	7	½	220	16.73	1.25	1.00	.33	.10	.59	20.00
113. Mid-State Home	22	5	7	1/8	230	17.49	1.25	1.00	.35	.10	.61	20.80
114. Hall, Ira J.—Pt. NE¼	22	5	7	1	350	10.88	1.25	1.00	.22	.10	.38	13.83
115. Thompson, John—Pt. NE¼	23	5	7	1	120	9.14	1.25	1.00	.18	.10	.32	11.99
116. Jim Walter Corp.—Pt. NE¼	23	5	7	¾	230	17.49	1.25	1.00	.35	.10	.61	20.80
117. Mid-State Home—Pt. NE¼	23	5	7	¾	230	17.49	1.25	1.00	.35	.10	.61	20.90
118. Perry, A. L.—Pt. NE¼	23	5	7	3/4	20	1.54	1.25	1.00	.03	.10	.05	3.97
119. Wood, Viola Nichols—Pt. NW¼	24	5	7	1½	150	11.44	1.25	1.00	.23	.10	.40	14.42
120. Penny, W. J.—Pt. E½ NW¼	25	5	7	1 2/10	120	9.14	1.25	1.00	.19	.10	.32	12.60
121. Cain, Thornton—Pt. NE¼	25	5	7	1	100	3.12	1.25	1.00	.06	.10	.11	5.64
122. Pioneer Finance—Pt. SE¼	26	5	7	1	170	12.95	1.25	1.00	.26	.10	.45	16.01
123. Fryer, Samuel—Pt. SW¼	30	5	7	1	300	9.32	1.25	1.00	.19	.10	.33	12.19
126. Comer, W. H.—E½ SE¼	4	6	7	80	480	40.56	1.25	1.00	.81	.10	1.42	45.14
127. Comer, Mildred M.—W½ SW¼	4	6	7	80	410	34.72	1.25	1.00	.69	.10	1.22	38.93
128. Mid-State Home, Inc.—½ A. NE¼	4	6	7	½	20	1.64	1.25	1.00	.03	.10	.06	4.08
129. McKinney, Cecil C.—½ A. NE¼	5	6	7	½	30	2.46	1.25	1.00	.05	.10	.08	4.94
130. Barnes, James W.—Pt. NE¼	5	6	7	2½	150	12.28	1.25	1.00	.25	.10	.43	15.31
131. Leeds Home—Pt. NE¼	5	6	7	2 6/10	140	11.47	1.25	1.00	.23	.10	.40	14.45
132. Mid-State Home—Pt. NE¼	5	6	7	1	30	2.47	1.25	1.00	.05	.10	.09	4.96
133. Donneney, Carolyn M.—¾ A. NE¼	5	6	7	¾	120	9.78	1.25	1.00	.20	.10	.34	12.67
134. Comer, Mildred M.—NE¼ NW¼	8	6	7	40	160	13.84	1.25	1.00	.28	.10	.48	16.95
135. Comer, T. H.—Mid. Pt. NE¼	8	6	7	80	360	30						

James H. Chase With Unit In Vietnam

U. S. ARMY, VIETNAM (AHT-NC) — An Army unit that took part in the Philippine Insurrection of 1899-1903 has again arrived in the Far East for combat service. The 11th Armored Cavalry Regiment landed this week.

The highly mobile regiment was last stationed at Fort George G.

Meade, Md.

Private James H. Chase, 20, son of Mr. and Mrs. Sam P. Chase, Rt. 6, Booneville, Miss., was scheduled to accompany the unit as a truck driver in Headquarters Troop, 3rd Reconnaissance Squadron.

Pvt. Chase entered the Army in November 1965. He is a 1964 graduate of New Site High School.

Wisconsin and Massachusetts are the two latest states to start using reflective auto license tags.

Half-dimes were issued between 1794 and 1873. All today are rare and worth from \$150 to \$1,000.



HOME ECONOMIST'S NOTES

By CLAIRE T. ROSS, Extension Home Economist

September Better Breakfast Month is a wise time to do some checking on your family's breakfast habits, particularly if you have some breakfast skippers.

Set yourself a goal of seeing that the "earners" and the "learners" at your house get a good start with a good breakfast every morning. If you have any weight watchers in your family, don't let them skip breakfast and expect to lose weight. A good breakfast is an absolute must in a reducing diet.

Something different often entices early morning appetites. See how your family likes:

Brown 'n Serve Eggs

For six servings slice the tops off of six brown 'n serve rolls. Scoop out centers, butter. Break an egg into each roll, season with salt and pepper and sprinkle grated cheese generously over the top.

Place filled rolls on a baking sheet and bake for about 15 minutes in a slow (325 degrees F.) oven. Place tops of rolls in oven to toast during the last few minutes of baking.

September Plentiful Foods

Potatoes, turkeys, barlett pears, grapes, peanuts and peanut products are the headlines on the plentiful foods list for September.

If you are taking advantage of good buys in potatoes, buy them with the purpose for which you will use them in mind. Do you want a mealy potato? Or a waxy-textured one?

Mealy potatoes tend to fall apart when you cook them, which makes them good for mashed potatoes but poor for French fries or cubed potatoes for salads.

Waxy potatoes hold together when cooked. While this makes lumps in mashed potatoes, it is desirable for salad potatoes and French fries.

You can make a quick test to tell the difference between potatoes. Cut a raw potato in half and immediately rub the two halves together briskly. If foam appears, the potato is mealy-textured. But if a sticky substance is formed, the potato is waxy-textured.

WANTED: NEW HABITS

Do you know what the washing manufacturers would like to give women along with new washers? They would like to give a set of new habits. These progressive manufacturers often complain that

women just won't let their washing machines save them time, labor, and money. The way to get full efficiency out of a modern washer, they believe, is to use it every day or two, instead of once a week.

That the old habit of saving everything up till "wash day" is a costly method of laundering. If you wash a load of soiled clothes a day, you accumulate clean clothes instead of dirty clothes. You keep soil and grime and perspiration from damaging fabrics when you wash them frequently, soon after they have been worn. And when you wash often, fewer clothes are needed. This last point in favor of daily laundry is especially important when there are youngsters in the family. And, but not least daily washing is easier on the hot water supply and less tiring to you than putting half a dozen loads through the washer and dryer on the same day.

AVAILABLE PULPWOOD

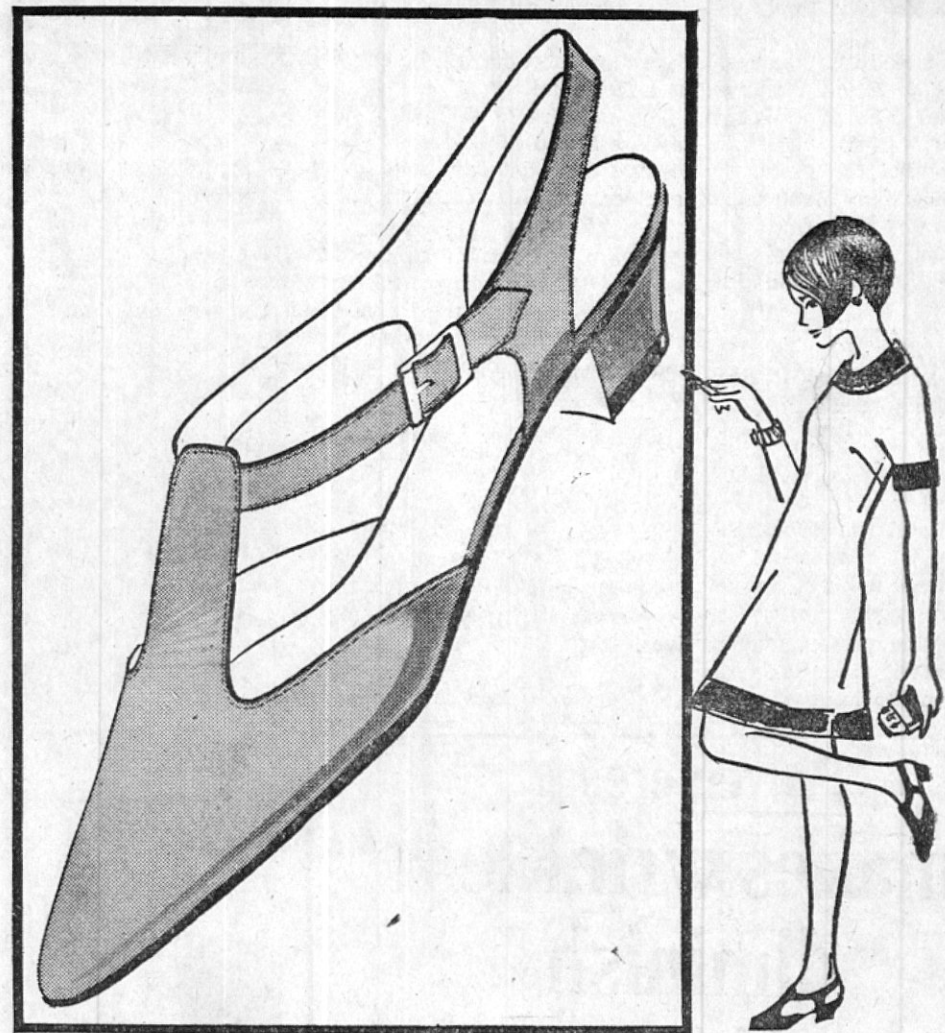
Pulpwood trucks are streaming down the highways in ever increasing numbers. In such large concentration, in fact, that they often must wait in line to be unloaded. Pulpwood yards, previously geared for part-time or off-and-on production, are nowadays finding it hard to secure enough space or enough rail cars to handle the flow of pulpwood that is rolling in on them. This happy state of affairs didn't just happen. Mississippi had to first produce a raw material supply which the pulp and paper industry could rely on to keep its giant mills in operation for the duration. The build-up of available pulpwood size timber in the state has reached tremendous heights. Yes, the picture is a bright one.

the crayon kid

Take a stocky, cocky little kid and give it crayon colors! You've just scribbled Fanfares' FLYER, the shoe for all-out fun and fantasy... in bright Red, Green, Blue or Black kid uppers (also Black suede). Get the kid now! As seen in 'Teen.

\$11.00

FANFARES



Feldman's

BOONEVILLE'S GREATEST STORE

Now at all LION Stations

4 CRYSTAL TUMBLERS



Only 99¢ with 8 gal. purchase

Matches Your "Platinum Starburst" China!

Elegant STEMWARE

2 ANY SIZE

Only 99¢ with 8 gal. purchase



This is too good to miss. You'll know these pieces are real crystal because they ring when you tap them. They've got a rich platinum band to add to their beauty. You get them at such low prices at Lion Stations because the Lion Oil Company made a colossal special purchase. The 4-piece tumbler set—ice tea, water, cocktail and juice glass—is just 99¢ with 8-gallon purchase. Stemware pieces match the tumblers, go with the china. Three sizes—goblet, sherbet, and fruit/cocktail. Two pieces for 99¢ with 8 gal. purchase.

Matches your "Platinum Starburst" China. If you've been collecting good-looking china from Lion Stations (it's still available), this new platinum-banded crystal will go with it—beautifully.

Dollar-wise... gasoline-wise... LION-IZE!



FREE BEAUTIFUL 4-PC. SILVER SERVICE

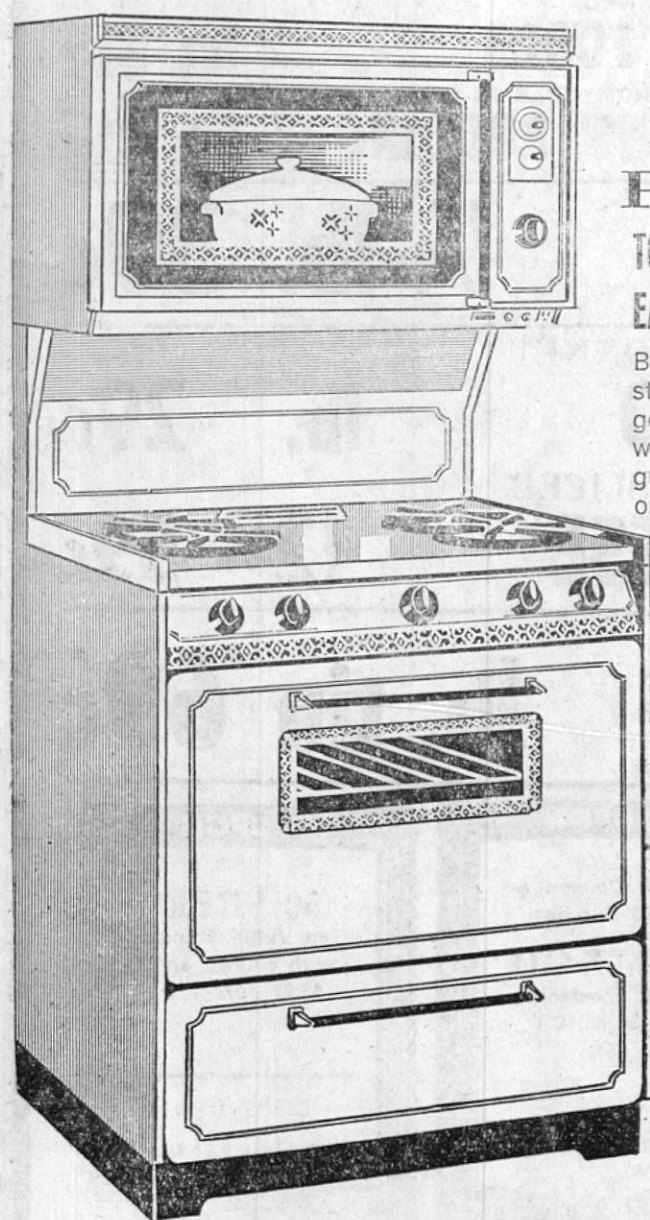
YOURS WITH THIS NEW TAPPAN PROVINCIAL TODAY'S SMARTEST LOOKING EASIEST-TO-CLEAN RANGE

Beautiful new decorator Provincial styling brings any kitchen to life. You get two big ovens, Hold-O-Matic keep warm oven, lift-off door, lifetime burner guarantee. Also available in Coppertone or white.

FREE TAPPAN GAS OR ELECTRIC RANGE

This beautiful double-oven range can be yours. Come by the store for details. Priced at \$279.00. To be given away Friday, September 30.

Come by our store and see this lovely silver service and range — both free.



BROWN Plumbing and Electrical Supply

On The Local Scene.

Mr. and Mrs. Kelly Wroten spent last week with their son and family, Mr. and Mrs. Paryam Wroten and Debbie of Marked Tree, Ark., and their grandson and family, Mr. and Mrs. James Kelly Wroten and Kim in West Memphis. On Labor Day they all enjoyed an air plane ride over Memphis and the Mississippi River.

Mrs. E. M. Perry of Rienzi visited last week with her son, Mr. Lewis Perry and his family.

Mr. and Mrs. Robert Cox left Wednesday for Jackson, Miss., where they will visit Mr. and Mrs. Robert S. Cox and attend Saturday the meeting of the directors of the Mississippi Dairy Products Assn., of which Mr. Cox is vice-president.

Mr. Teddy Feldman accompanied Mr. Ted Rubenstein to the University of Virginia in Charlottesville, Va.

Saturday where he will be enrolled as a freshman.

Mr. and Mrs. O. C. Harber spent last week end in Columbia, Miss., visiting their daughter and son-in-law, Mr. and Mrs. Garland Upton.

Mrs. Theodore Rubenstein and Mike are presently making their home in Oxford, where Mrs. Rubenstein is attending the University working toward her Master's degree and Mike is a sophomore at Oxford High School.

Mrs. Edwin Coleman of Corinth visited Mrs. Billy Burrell last Wednesday.

Mrs. Charles Googe, who is recovering from an operation in the Tupelo Hospital, is wished a speedy recovery by friends and relatives.

Red cedar is used in pencils.



MR. AND MRS. JERRY WADE FLOYD

Miss Elizabeth Ann Rutherford Becomes Bride Of Jerry Wade Floyd September 4

Miss Elizabeth Ann Rutherford, daughter of Mr. and Mrs. William S. Rutherford, became the bride of Jerry Wade Floyd, son of Mr. and Mrs. Rowdy J. Floyd, in a lovely wedding in the home of her parents Sunday afternoon, September 4, at 5 o'clock. The ceremony was performed by the Reverend John Dugard of Tupelo, pastor of the Oak Hill Baptist Church, who officiated in the presence of the immediate family and a small gathering of friends.

Vows were exchanged before an improvised altar which was centered with a large arrangement of white mums flanked with emerald green fern trees. Wrought iron candelabra, entwined with greenery, held glowing white tapers.

The wedding music was presented by Mrs. Thomas Garner, pianist. The bride, given in marriage by her father, wore a wedding gown of gardenia white peau de soie featuring a scooped neckline and a bodice which was appliqued with Alencon lace reembroidered with seed pearls. The skirt fell into fullness from a Basque waist and had a band of the lace at the hem line. A chapel train fell gracefully from the low Basque in the back. A dainty pill box secured the triple tiered bouffant veil of illusion.

The bride carried a cascade ar-

range of stephanotis and lily of the valley, centered with a white orchid with green leaves and white satin ribbon tied in lovers knots. She wore a string of pearls, a gift of the groom.

Mrs. Hoyle Eaton served as matron of honor and wore a sheath dress of pale pink whipped cream and matching head piece of net and satin ribbon. She carried a colonial bouquet of pink pom pom mums and lily of the valley.

Max Floyd of Memphis, brother of the groom, served as best man. The bride's mother chose for her daughter's wedding a two-piece dress of blue and wore a shoulder corsage of white carnations.

RECEPTION

Following the wedding a reception was given by the parents of the bride in their home. Pink and white arrangements of gladioli interspersed with greenery was used in the decorations in the dining room.

The bride's table was overlaid with a pink cloth which was centered with a three-tiered wedding cake, ornamented with pink sugar roses and white wedding bells. Pink punch was served from a crystal bowl and silver containers held pink and white mints and salted nuts. Pink candles in crystal candelabra added to the beauty of the table.

Miss Joy Rutherford, sister of the bride, and Miss Elizabeth Davis presided at the bride's table. Others assisting were Miss Velma Strange and Mrs. Bill Hamblin. Mrs. Johnny Wiseman presided at the bride's register, which rested on a table decorated with pink flowers and delicate greenery.

Miss Judy Rutherford and Miss

'School Days' Theme For Ladies Luncheon At Country Club

A theme of "School Days" welcomed the members and guests to the luncheon on September 6th at the Booneville Country Club. The tables held arrangements of fall flowers, books, slates and crayons. The buffet table was centered with a lovely arrangement of

Kay Rutherford, sisters of the bride wearing identical Empire styled frocks of pink and white dotted Swiss, passed rice bags made of pink net, tied with pink satin ribbon.

For traveling the bride chose a two-piece silk linen suit in tangerine and wore an orchid from her bouquet. After a short wedding trip, the bride and groom will return to their home in the Oak Grove Community.

Out-of-town guests were Mr. and Mrs. Bill Hamblin of Tupelo and Max Floyd of Memphis, Tennessee.

mixed flowers and featured a football scene with appropriate dressed dolls.

The menu consisted of baked pork chops, green beans, candied apples, mixed green salad and brownies.

Guests were Mrs. Virginia Walden, Mrs. W. R. Richerson, Miss Mary Neal Richerson and Mrs. Charles Vail.

The hostesses were Mrs. Harold Robertson, Mrs. E. O. Roden, Mrs. Marvin Smitherman, Mrs. Emmons Turner, Jr. and Mrs. Lloyd Downs

DELTA LAND LEVELING

Machines on Delta plantations is one reason for the increased interest in land leveling. Plantation owners are squaring their fields to accommodate heavy equipment, lengthening the rows, and eliminating the turns that eat into profit. Also, in proper land leveling, many farmers have found a solution to an age-old problem in flat fields — that of drainage, an all-important factor from planting to

harvest. In a land leveling operation, the earth is graded and smoothed. Pockets are eliminated, water flows evenly across the land surface, and the excess is safely carried to protected outlets. The length of rows can be controlled

to handle both draining and irrigation most effectively.

Competition for tourist trade is keen among the Caribbean islands.

Accidents cost \$18-billion in 1965.

NOTICE!

Joe Arnold wishes to announce the Re-Opening Of His Pool Room,

In addition to a very nice RESTAURANT

Assisting him will be Bonard Grisham and Lucy Kennedy. They invite all their old friends and many new ones to try their service and good food.

Proven cream makes wrinkles diminish or vanish in 2 weeks



With a substance new to cosmetics, named Genava, aging skin can start looking younger and younger — not older and older.

After a two-week trial on a selected group of women, a noted dermatologist reports on the ingredients in Genava:

"Disappearance of small wrinkles was accomplished in two-week period; even the very deepest wrinkles showed very great improvement."

Dr. W. P. also comments, "the small superficial wrinkles responded dramatically." And he adds that the skin was "more trans-

lucent and smoother in appearance."

These results are nothing short of amazing. And it took a new cosmetic compound to do it.

Genava was developed by the trustworthy Nina laboratory. Designed to be used twice daily — under make-up and overnight — it is absorbed instantly by the skin. Start using Genava today. In just two weeks your wrinkles will vanish or diminish greatly. Skin becomes more translucent, smoother. You will look gloriously younger! 1.65 oz. \$3.50; 4 oz. \$5.00.

nina's genava

DUCKWORTH
REXALL DRUGS

MAN, OH, MAN...
HAVE WE GOT PRESS GARD
SHIRTS FOR GUYS!

All by Tom Sawyer—Elderado...never need ironing



Sporty plaid shirt.

\$4.00

\$4.00

Here they are! Boys' shirts of 65% Dacron® polyester, 35% combed cotton. All 100% wrinkle-free with "Press Gard", the exclusive durable press finish.

Now, dress 'em up without a press 'em up! No time wasted on ironing these shirts, mom. Just toss 'em in the washer and tumble 'em in the dryer (or drip dry them). They come out looking neat-as-new every time.

The secret: the new Press Gard finish. It really works!



INDEPENDENT MUTUAL
INSURANCE AGENT

Mutual Agents
Offer More...

Security...Personal
Service...Savings

YOU can count on these benefits from the independent mutual agent who is authorized to display the "Independent Mutual Agents" emblem. It is the mark of an agent qualified by professional training and experience:

• To advise you on business and personal insurance... help you select coverage that fits your special needs, at economical cost.

• To serve you promptly and efficiently as only a local agent can... with personal attention to claims and loss payments.

This Agency is ready to serve you at all times. Call us today... for business, home, or automobile insurance.

15,000 Agents in the Nation. Almost 200 in Mississippi.

TO INSURE WITH
THIS LARGE GROUP
CONTACT
Carier Mutual
Insurance Agency
Highway 45 - Across from Hospital

STICK-TO-THE-RIBS VALUES AT M&H FOOD MARKET

FRYERS Purnell Pride U. S. Grade A **lb. 29c**

GROUND BEEF Fresh, Lean **lb. 55c**

WIENERS Bryan All Meat **12-oz. pkg. 49c**

BOLOGNA Sandwich Sliced **3 $\frac{1}{2}$ \$1**

BACK BONE **lb. 65c**

SIRLOIN STEAK U. S. Choice **lb. 99c**

Armour's Star

Bacon
lb. 89c

WITH COUPON AND 5.00 ADDITIONAL PURCHASE

CRISCO 3-lb. Shortening or 38-oz. Oil **49c**

--- FRESH PRODUCE ---

TENDER GREEN
POLE BEANS, lb. 19c
TEXAS YELLOW
CORN, 5 ears 39c
FRESH, VITAMIN RICH
CARROTS, 2 cello pkgs. 25c
U.S. NO. 1 RED
POTATOES, 10 lbs. 49c

--- FROZEN FOODS ---

FROSTY ACRES
ORANGE JUICE, 12 oz. 39c
SWISS MISS
FRUIT PIES 3 for \$1.00
SWANSON CHICKEN
POT PIES, 8 oz. 2 for 53c
GORTON
PERCH FILETS, lb. 47c

PEACH HALVES Libby **No. 2 1/2 Can 25c**

LIBBY
FRUIT COCKTAIL, No. 2 1/2 can 39c
HEINZ CREAM OF TOMATO
SOUP, 4 cans 69c
GOLDEN PLATE
HONEY, full quart 97c
JACK SPRAT TOMATO
CATSUP, 14 oz., 2 bottles 39c
KELLY'S PLAIN
CHILI, no Beans, 300 size 39c
DEL MONTE CUT GREEN OR SEASONED GREEN
BEANS, 303 size, 4 for \$1.00

BAMA
APPLE JELLY, 18 oz. 4 for 89c
BLUE PLATE
PEANUT BUTTER, 12-oz. jar 35c
WHITFIELD HAMBURGER DILL
PICKLES, 16 oz. 29c
JACK SPRAT
PANCAKE MIX, lb. 19c
HEINZ STRAINED
BABY FOODS 3 for 31c
JELLO, ECONOMY SIZE 5 1/4 OZ., Lemon, Chocolate, Vanilla
INSTANT PUDDING 2 for 31c

LIPTON TEA Brisk Flavor **1/4-lb. 39c**

NORTHERN — ASSORTED COLORS
TISSUE, 4 rolls 39c
LAUNDRY DETERGENT
CHEER, Giant Size 69c
PINT SIZE
RUBBING ALCOHOL. 3 for 49c

BLUE BONNET
OLEO **lb. 29c**
KRAFT SLICED
CHEESE **12-oz. 59c**

COFFEE Folger's **lb. tin 69c**

WITH \$5.00 ADDITIONAL PURCHASE

DRINKS
1/2 case 39c

Plus Deposit or Bottles

COUPON
With Coupon & \$5.00 Purchase
CRISCO
3 lbs. Shortening or 38 oz. Oil
49c
— LIMIT 1 —
Expires 9-21-66

COUPON
50 FREE
Top Value Stamps
with coupon and \$5.00 purchase
— LIMIT ONE —
Expires 9-21-66

Required Purchase Necessary For Each Coupon Or Deal

M & H FOOD MARKET

THE NEWS FROM— MEADOW CREEK

By Gretchen Twitty

Mr. and Mrs. Trelby Twitty, Mr. Zane Ellis and Mr. Albert Twitty spent last Friday in Jackson, Miss. on business.
Mr. and Mrs. W. C. Ellis and Ethan were supper guests of Mr. and Mrs. A. T. Twitty one evening last week.
Mrs. Albert Twitty is on the sick list. We wish for her a speedy recovery.

Rev. Willie B. Roaten of Corinth and Rev. Woodrow Horn of Tishomingo spent a while last Tuesday with Mr. and Mrs. Trelby Twitty.
Mr. and Mrs. Joe Woodruff spent one day last week in Booneville shopping.
Mr. and Mrs. Alfred Rampley and Mrs. Tom Hurst spent Thursday evening with Mr. and Mrs. A. T. Twitty.
Those visiting Mr. and Mrs. Trelby Twitty Sunday were Mr. J. W. McKissack and his mother, Mr. and Mrs. Archie Miles, Mr. Joe Woodruff, Mr. and Mrs. Albert Twitty and Rev. Woodrow Horn.

Rev. Woodrow Horn will preach at the Pleasant Grove Baptist Church every second and fourth Sunday at 11 a.m. and 7 p.m. Everyone is invited to attend.
Sunday visitors of Mr. and Mrs. Joe Woodruff were Mrs. Edd Penny and children and Mr. and Mrs. J. V. Woodruff and family.
Mrs. Howard Duncan spent Saturday evening with Mrs. Trelby Twitty.

All Day Singing At New Bethel Sunday
There will be an all day singing Sunday, Sept. 18 at New Bethel Church, near Hodges Chapel Cemetery.
Singing will begin at 10 o'clock and lunch will be spread at the noon hour. Everyone, especially singers, has a cordial invitation to attend.
Liberal German refugees settled in Kenosha, Wis. in 1850.

The long, muscular tails are used by kangaroos to balance while leaping.
India produces jute.
NOTICE OF THE QUALIFIED ELECTORS OF PRENTISS COUNTY
By virtue of an order adopted by the Board of Supervisors of Prentiss County, on the 8th day of September 1966, notice is hereby given of the boards intention to borrow the sum of FIFTEEN THOUSAND (\$15,000.00) DOLLARS, on October 7th, 1966 and to issue the notes of the County for the payment of said loan, unless 20% of the qualified electors of Prentiss County protest or file a petition against the issuance of said notes.

The above sum will be borrowed for the Common County Fund, and will be borrowed for the purpose of defraying the expenses of the county, and in anticipation of taxes to be collected for said fund from a special tax levy and in strict compliance with the provisions of Section 2926-13 of the Mississippi Code 1942.
WITNESS my signature this the 8th day of September, 1966.
Bluford Allen
Clerk of the Board of Supervisors. 25-3tc

Pakistan is increasing oil production.

LIKE TO SAVE MONEY?

Then insure that new home and contents with us. Standard, Broad, or Special Coverage. OR Comprehensive Dwelling Policy, including Theft and Liability, if you prefer the best. Prompt Claims Service.

CARTER MUTUAL



GRAPES are Great



Grapes... a most tempting fruit. Who can resist taking one grape—then another? Now is the season to help yourself to the large, red sweet California Flame Red Tokay Grapes. You'll find these delicious Tokay grapes Now at Big Star... and a real value.

Maxwell House COFFEE, 2-lb. can \$1.49 * Jack Sprat PEANUT BUTTER, 2 1/2-lb. jar 89c *
Dinty Moore BEEF STEW, 24-oz. can 49c * APPLE SAUCE, Jack Sprat, No. 303, 2 for 29c * Golden Delicious APPLES, 4-lb. bag 49c

With Coupon and \$5.00 Additional Purchase Booneville Freshlaid Grade A *Tokay

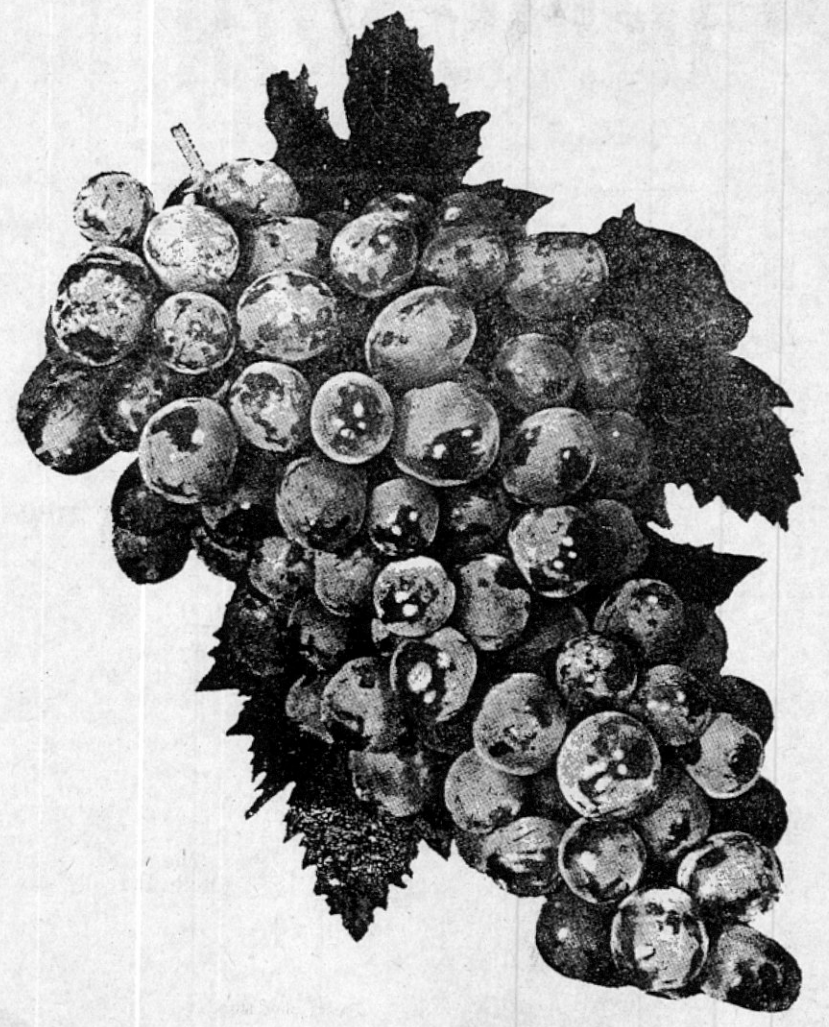
EGGS Med. Doz. 15c	Large Doz. 19c	GRAPES Pound 15c
----------------------------------	-----------------------	--------------------------------

BACON, Harvester, 2 lbs. \$1.49 * Mayrose LUNCH MEATS, 6-oz. pkg. 3 for 89c *
Dixiana FRANKS, 12-oz. pkg. 45c * Mayrose CANNED HAM, 5-lb. can \$4.79 *
SOUTHERN BELLE PORK SAUSAGE, lb. 79c * **HAM** Southern Belle Shank Portion, lb. 53c *
BACON, Southern Belle, lb. 83c * Butt Portion, lb. 63c *

Purnell Pride U.S.D.A. Inspected, U.S.D.A. Grade A

CHICKEN Cut Up Tra-Pac lb. 33c	Whole lb. 29c
--	----------------------

U.S.D.A. GRADE A SHENANDOAH HEN TURKEYS, 10/14 lb. 49c * Chum SALMON, No. 1 can 59c *
ROSE-DALE PEAS, No. 303 can 2 for 29c * JACK SPRAT TOMATO JUICE, 46-oz. can 29c *
JACK SPRAT CUT GREEN BEANS, No. 303 can 2 for 29c * DOLE, 46-oz. CANS Pineapple-Grapefruit JUICE 3 for 89c *
SPAM, 12-oz. can 49c * MAXWELL HOUSE INSTANT COFFEE, 10-oz. jar \$1.39 *



PLAY.. SUGAR

"Let's Go To The Races"
WIN.. Up To \$500.00

FULL OF FUN AND EXCITEMENT FOR THE WHOLE FAMILY.
GET YOUR FREE CARDS AT BIG STAR AND PLAY EVERY SATURDAY NIGHT. 1ST RACE WINNER WINS \$5, 2ND RACE \$10, 3RD RACE \$25, 4TH RACE \$100, 5TH RACE \$500. PLAN A LET'S GO TO THE RACES PARTY... INVITE YOUR FRIENDS AND NEIGHBORS.
CARD COLOR THIS WEEK IS BLUE.
WINNERS:
Carolyn Bullock \$5.00
Mrs. Jack Scott \$5.00
Elbert Smith \$5.00

With Coupon and \$5.00 purchase
100 FREE QUALITY STAMPS
Ajax DETERGENT, Giant Box 59c
CRISCO OIL, 38-oz. Bottle 69c
PALMOLIVE LIQUID, 12-oz. Bottle 35c

Morton Frozen — Apple or Peach
FRUIT PIES
PIE SHELLS Ole South
Booth
FISH STICKS 1 1/2-lb. Pkg. **89c**

5-lb. Bag 49c

CAKE MIX, Betty Crocker 3 for 89c *
LISTERINE, 14-oz. Bot., Reg. \$1.09 79c *
PRELL SHAMPOO, Reg. \$1.09 79c *
50 FREE Quality Stamps with purchase
Gleem TOOTH PASTE, 5-oz. Tube 79c *

Coupon
With Coupon \$5.00 Purchase
100 FREE Quality Stamps
— LIMIT ONE —
Expires 9-21-66

Coupon
With this Coupon and \$5.00 Additional Purch.
EGGS
Med. Doz. 15c
Large, Doz. 19c
— LIMIT ONE —
Expires 9-21-66

COUNTY AGENT NOTES

TAYLOR SMITH, County Agent

FEDERAL GAS TAX

Some changes have been made in the manner in which you request federal gas tax refunds.

Refund Claim Form 2240 will not be used this year. And September 30 is no longer the deadline for claiming the refund!

This time, you will request the refund at the time the 1966 Federal

Income Tax return is prepared. This year the claim for refund will cover farm used gasoline for the period July, 1965, through December 1966—an 18 month period. In future years, the period will be for the calendar year or the income tax year.

Because of this change, farmers will not receive Form 2240, Claim

for Refund of Federal Gasoline Taxes used on the Farm.

Full instructions for claiming gas tax refund on your Federal Income Tax return will be in the 1967 "Farmer's Tax Guide".

SOIL TESTING

Take the guesswork out of your fertilizer program. Don't lose money through using too much or too little fertilizer. Soil testing will indicate just how much of what kinds of fertilizer you need to make the top profit dollars from all of your crops. For details, come by

WINTER GRAZING

Top dress your old, established fescue with 30 pounds of nitrogen and 100 pounds each of phosphate and potash per acre now. Then later in the fall, add more nitrogen. Do not graze the fescue until around November 1. This grass is for late fall and spring grazing.

For new plantings of fescue, drill 10 pounds of seed per acre in rows, or broadcast 20 pounds. Apply at least 30 pounds of nitrogen and 80 pounds each of phosphat and pot-

ash per acre. Do not plan to graze this winter unless the fescue gets eight to 10 inches tall. Then take care not to overgraze.

Sow wild winter peas in sod at least 50 pounds per acre or plant with a sod seeder. It will pay you to use at least 60 pounds each of phosphate and potash per acre. Winter peas will grow in heavy Bermuda sod where clovers cannot survive.

PREVENT FOREST FIRES

Now, before the really big forest fire season arrives, is the time to

take some steps to keep fires out of your woods.

If you must do some burning, pick your time when the moisture conditions are right. Have help on hand with equipment. Let the for-



Propane & Butane Gas Service

Also A Complete Line of Gas Appliances

"SERVICE IS THE DIFFERENCE"

ROGERS L. P. GAS COMPANY

Perry Henderson, Manager, Hwy. 45 N. Phone 728-5073 days and 728-6592, nights

Go First Class / shop Sunflower "It Costs No More"



RED CARPET SERVICE

The Welcome Is Warmer....

FRIENDLY ATTENTION
WIDER SELECTION



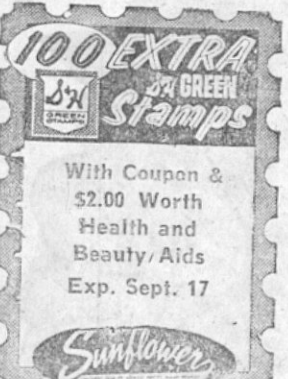
Prices Good Through Sept. 17th

NOW AT SUNFLOWER
For Your Shopping Convenience
THURSDAY—FRIDAY—SATURDAY
OPEN 'TIL 8 P. M.
—PLUS—
DOUBLE STAMPS
6 P. M. 'TIL 8 P. M.

DUNCAN HINES ASSORTED CAKE MIXES

Choc., Swiss Choc., White, Yellow, Orange, Lemon, etc.

3 20-oz. Sizes \$1



Direct From California
Famous "BUD"
LETTUCE

"Make Your Salads The Best"

19¢



Banquet Assorted

Meat Pies 5 8-oz. Sizes \$1

Delicious Seedless

GRAPES
lb. 23c

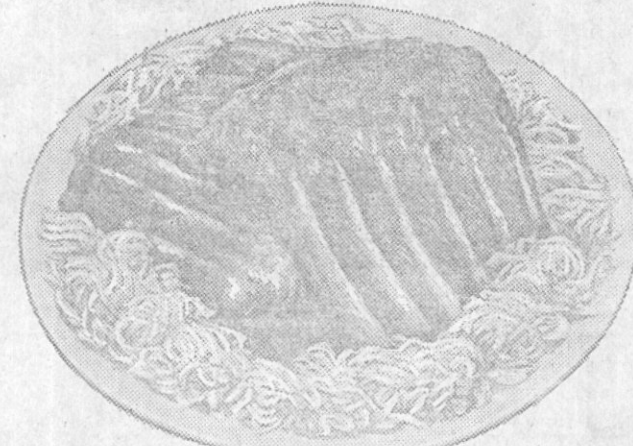


FRESH HONEYDEWS, each 49c

Mayrose Corn Fed Country Style

SPARE

RIBS "Real Meaty" lb. 69c



"Our Meat Men Are Particular"

Ask For Special Cuts Of Meats"

Sally's Brand Hot or Mild **SAUSAGE**
For Economical Breakfasts
lb. 49c

MAYROSE Quality Western Corn-Fed

PORK CHOPS

Leaner, meatier pork chops

center cuts

lb. 79c



Sally's Brand

BACON 12-oz. pkg. 79c

SOUTHERN FARMS CRINKLE CUT **POTATOES**, 5 lb. bag 89c

SCHOOL DAY—4 SIEVE **PEAS**, 4-303 Cans 69c

CARNATION **MILK**, Tall Cans - 3 For 49c

COKE-PEPSIS

ALL OTHER SOFT DRINKS

3 6 BOTTLE CARTONS Plus Deposit \$1

SALLY SALAD DRESSING

Qt. 49c

HUNTS CATSUP

4 14-oz. bottle 89c

Purnell Pride Family Pack

FRYERS
lb. 29c

WIN free CASH

\$10000

BIG JACKPOT DAY

REGISTER JUST ONCE. GET YOUR CARD PUNCHED EACH WEEK. And You Can Win Wonderful CASH DOLLARS.

GET YOUR JACKPOT DAY CARD PUNCHED. FREE FREE THIS WEEK.

JIMMY BURYMAN, RT. 2, RIPLEY, \$100.00 WINNER