

The Banner Independent



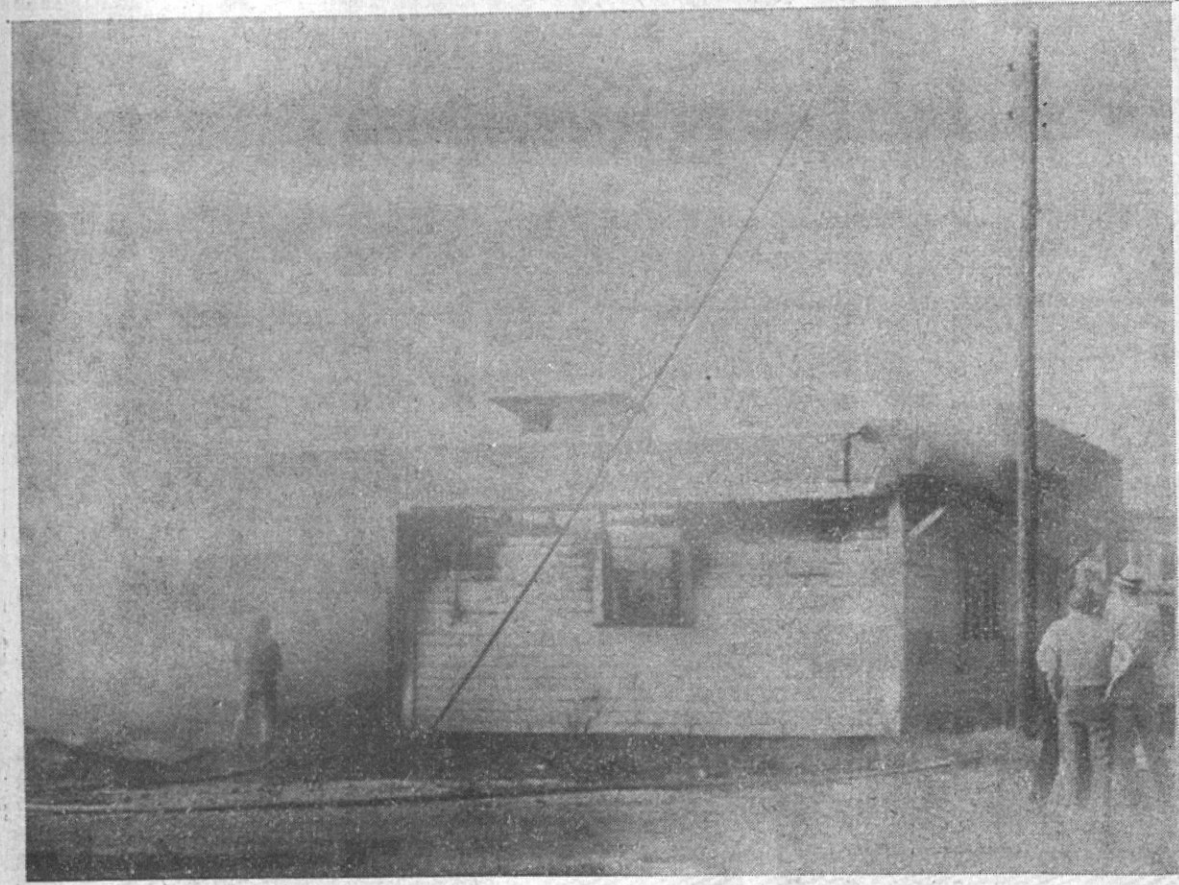
Consolidated October 31, 1957: The Booneville Banner, Est. 1898 — The Booneville Independent, Est. 1923

Over Half a Century of Service to Prentiss County

VOLUME SIXTY-SEVEN

BOONEVILLE, MISSISSIPPI, THURSDAY, SEPTEMBER 17, 1964

NUMBER 25



Furniture Manufacturing Company Is Destroyed By Fire Sunday Afternoon

A Sunday afternoon fire completely destroyed the North Mississippi Furniture Company on Highway 45 North here. The business is operated by Basil Roberts and B. F. Lovell and manufactures living room furniture. They employ a total of six workers.

The blaze apparently started in the rear of the building which had upholstery and padding materials stored and approximately 5100 feet of dressed lumber as well as framing equipment, saws, etc. The front of the building was used for the upholstery department and finished furniture.

Fire Chief W. K. Wallace said that the fire department received the call on the building at 1:55. Firemen were unable to fight the front part of the fire for some time because a television antenna had fallen across a high voltage power line and they had to wait until power company workers could be called and turn off the current.

Mr. Wallace said the fire department had answered a call about 11 a.m. to put out a grass fire near the rear of the building that had caught from a garbage can some distance farther back, and a few minutes after 12 went back to soak down a sawdust pile that was smoldering. He said evidently the building caught from some cloth or padding that had caught earlier and been smoldering under the tin siding.

The building was owned by Car-

mon Walden. Mr. Roberts said that there was no insurance on the building or the contents. He estimated his loss at about \$7,000 and said that less than \$100 worth of materials was salvageable.

They are now setting up in the J. C. Geno building across from the hospital and expect to be back in operation by Monday.

Constitution Week Proclamation

WHEREAS, September 17, 1964, is notable as marking the one hundred seventy-seventh anniversary of the adoption of the Constitution of the United States of America by the Constitutional Convention; and

WHEREAS, To accord official recognition to this memorable anniversary, and to the patriotic exercise which will form a noteworthy feature of the occasion, seems fitting and proper; and

WHEREAS, In accordance with Public Law No. 915, the President of the United States has issued a Proclamation designating September 17 through 23 as CONSTITUTION WEEK;

NOW, THEREFORE, I, M. W. Smith, by virtue of the authority vested in me as Mayor of the City of Booneville, do hereby proclaim the week of September 17-23, 1964 as

CONSTITUTION WEEK

in the City of Booneville, State of Mississippi, and urge all our citizens to pay special attention during that week to our Federal Constitution and the advantages of American citizenship.

In Witness Whereof, I have hereunto set my hand and caused the Seal of the City of Booneville to be affixed, at Booneville, Mississippi, this 28th day of August in the year of our Lord one thousand nine hundred sixty-four, and the independence of the United States of America, the one hundred eighty-eighth.

(SEAL)

Signed: Marion W. Smith, Mayor

Blue Devil Gridders Go On The Road For Game With Okolona Friday Night

The Booneville Blue Devils will go on the road Friday night to take on the strong Okolona Chieftains in their home camp. The Blue Devils dropped a 19-0 encounter with Baldwyn here last week while the Chieftains were rolling over Ful-

ton's Indians by a score of 24-12.

The Okolonans possess a swift line and a fast backfield headed by quarterback Tommy King and big fullback Gayle Brasher.

In the Baldwyn game here Friday night, Booneville was again un-

Girl Scout Drive Begins Tuesday

The Girl Scout Council campaign drive will officially begin on Tuesday, September 22nd.

However, Kenneth Pounds, chairman, said Wednesday that advance gifts already amount to approximately \$650.00. He has mailed over 90 letters to local industries and individuals and he said, "The response has been good. I believe others I have contacted will get their contributions in soon."

You are asked to bring or send your gift for Girl Scouts to Mr. Pounds as soon as possible.

Prairie Council has a budget of \$39,745 for the 19 Girl Scout units in this area. All money collected remains in the council.

Attention, All Outdoor Sportsmen

The fall of the year is here again. The leaves are turning brown, muscadines are falling, the year's new crop of game is getting grown and ready for harvest.

No other people in the world are as fortunate as the Southern outdoor sportsman, come Indian Summer, when he gets out his favorite gun or guns, oils them up and begins to dream and plan his fall hunting trips. Whether his favorite game is dove, quail, rabbit, coon, possum or deer he looks forward to many happy days out in the great outdoors.

Until the seasons are open, the next best thing to hunting is talking about hunting, so come on out to the Prentiss County Sportsmen's Club at the next regular meeting, September 21 and talk to your friends about hunting and fishing. All sportsmen are welcome to come and enjoy a good meal and "chew the fat or shoot the breeze." We will have a speaker for the occasion.

Eston Stevens, Secretary

BHS Has New Asst. Football Coach

Herman Seymore, formerly from Nettleton, joined the Booneville High School faculty as an assistant football coach Monday.

Mr. Seymore has played college football at Memphis State, Delta State and Itawamba Junior College. He and Mrs. Seymore are now living in Booneville.

H. D. Council Grants Scholarship



MARTHA ROWLAND

Martha Rowland, daughter of Mr. and Mrs. Eugene Rowland of Blackland Community, was chosen by a Home Demonstration scholarship committee to be the recipient of a scholarship to NEMJC.

Martha was a 1964 graduate of Wheeler High School, and was salutatorian of her class. She also received her class home economics award.

An outstanding 4-H Club member, Martha was this summer awarded a trip to the Older Youth Resource Conference at Fontana, N. C., and is a member of the Vegetable Judging Team which won first place at State 4-H Club Congress.

The Home Demonstration Council plans to put on sale in the near future a Prentiss County recipe book to help sponsor scholarships for worthy young ladies who are interested in the field of home economics.

Blue Devil B's Blast Belmont

John Hutchins, 135-pound junior speedster, scored two touchdowns and an extra point at Belmont Monday night as the Booneville Blue Devil B-team downed the Cardinal B-team 13-7.

Late in the opening quarter with Booneville in possession at their own 34 yard line, Hutchins burst through left tackle, dodged a couple of defenders and outran the secondary on the 66-yard scoring run. Jimmy Dale Downs was stopped short on the point try.

With 39 seconds left in the third period Booneville took over at their own 20 after Belmont had punted over the goal. On the first play from scrimmage Hutchins again went through left tackle and all the way. He then skirted right end for the extra point to account for all the Booneville scoring.

Belmont scored midway in the fourth quarter on a four-yard plunge at left tackle and added the extra point on a similar play.

All Day Singing At Rolland Mill

The annual all day singing will be held the fourth Sunday in September, Sept. 27, at Rolland Mill Baptist Church, located 5 miles South of Burnsville, Miss.

A number of outstanding singers

Preparations Are Begun For Resurfacing Of City Streets

Preparation for the resurfacing of the streets of Booneville's business district began Wednesday as Mr. Jack Frost and his crew of men began raising the height of the manholes. Mr. Jim Scott and the men from the Gas and Water Department will also raise the height of the gas and water connections.

The concrete was broken Wednesday around the 15 manholes, located at intersections and the middle of various streets. With the use of brick and cement the manholes will be raised one and a half inches to allow for the resurfacing.

Horton Brothers of Corinth has the contract in the amount of \$25,000. Much of the work is expected to be done Sunday, when there is less traffic and therefore will cause less interruptions of business.

Recent hard freezes in the winter time have caused considerable damage to the streets.

According to file copies of this newspaper, original paving was in 1929. From a January 4th, 1929 issue we read:

"The Mayor and Board of Aldermen met last Monday night and awarded contracts for paving, storm

and sanitary sewerage and white way for Booneville. The competition was keen, there being about 25 bidders present for the various classes of work. The total of the contracts awarded will be around \$56,000; when these same contracts were attempted to be let two years ago, the total was around \$70,000."

The article continued, "The ma-

terial to be used in the paving is Alabama Line Rock Asphalt from the mines near Cherokee, Ala. The Mogan-Hill Paving Co. of Birmingham secured the contract for the paving which will begin early in the spring, after the sewerage work and white way work is completed."

The streets have been resurfaced many times since then.



PRENTISS COUNTY DAIRY QUEEN AND KING, Peggy Jo Moore, daughter of Mr. and Mrs. James T. Moore of Jumpertown and Eddie Alexander, son of Mr. and Mrs. W. A. Alexander, Jr. of Jumpertown, have been selected to represent Prentiss County as Dairy Queen and King in the Mississippi-Alabama Fair and Dairy Show in Tupelo. Peggy Jo and Eddie were selected by the 4-H Junior Council as representatives from this county. Both are active 4-H Club members and will be exhibiting dairy animals in the fair. They will be showing dairy animals in Prentiss County on September 25 and in Tupelo on September 30.



Medical Staff Elects Officers

The Medical Staff of the Northeast Mississippi Hospital met Monday night, September 7. The annual election of officers was held and the following were elected:

Dr. P. C. Ellzey, President of the Staff; Dr. S. C. Galloway, Vice-President of Staff, and Dr. Webster Cleveland, Jr., Secretary.

Medical Staff Elects Officers

The Medical Staff of the Northeast Mississippi Hospital met Monday night, September 7. The annual election of officers was held and the following were elected:

Dr. P. C. Ellzey, President of the Staff; Dr. S. C. Galloway, Vice-President of Staff, and Dr. Webster Cleveland, Jr., Secretary.

The Medical Staff meets monthly for committee reports, reviews and analysis of clinical work, and a scientific program.

There are ten physicians on the active staff and eight on the courtesy staff.

Booneville Grammar P.T.A. To Meet Monday Night

The first meeting of the Booneville Grammar School Parent-Teachers Association will be Monday night, September 21, at 7 o'clock in the school auditorium.

Mrs. Charles Brown, secretary, said that the initial meeting of the year will be in the form of a get-acquainted party. Refreshments will be served.

All parents are urged to attend to get acquainted with each other, their children's teachers, and the new principal.

Services Sun. For Willie E. Bryant

Services for Mr. Willie E. Bryant were held at 1:30 p.m. Sunday in McMillan Funeral Home with the Rev. Billy Roby officiating. Burial was in the Booneville Cemetery. He was 66 years old.

Mr. Bryant died of a heart attack at 4 a.m. Saturday at his home. He suffered a coronary about 6 months ago but had recovered sufficiently enough to be out among his many friends.

He was born in Tippah County but had made Booneville his home for the past 45 years. He was a barber, a member of the Baptist Church and a Mason.

He leaves his wife, Mrs. Bettie Lee Wallis Bryant; a daughter, Mrs. Homer Guy; three grandchildren, Don, Mike and Phil Guy; four brothers, Roy Bryant of Chattanooga; the Rev. Milton Bryant of Brookhaven; Elmer and Walter Bryant of Memphis, Tenn.; two sisters, Mrs. Alma Shelton and Mrs. Ida Shelton of Ripley.

Singing At New Bethel Sunday

The New Bethel Baptist Church announces that there will be an afternoon singing on Sunday, Sept. 20 at the church. Everyone is cordially invited to attend. The singing will start at 1:00 p.m.

Notice

Dr. Jimmy Nelson of Baldwyn will be at the Blackland Community Center on Wednesday, Sept. 23 to give vaccinations to dogs. The cost is \$1.50 each.

First Methodist To Have Cake Sale

The First Methodist Church is sponsoring a Cake Sale on Saturday, September 19 on the Court Square. They will start selling at 8:00 a.m. and stay until all cakes are sold.

Blackland RCDC Has Regular Meeting

The Blackland RCDC held its regular monthly meeting Monday night September 14. After the program a planning session was held with reports on progress of projects. The club decided to sponsor a campaign to give the dogs in the community vaccination against rabies. Dr. Nelson of Baldwyn will be at the Blackland Community Center Wednesday, Sept. 23 from 11:30 a.m. to 1:30 p.m. Everyone who has a dog is urged to come and get it vaccinated. The price will be \$1.50 per dog.

Other projects were discussed and will be carried out at a later date.

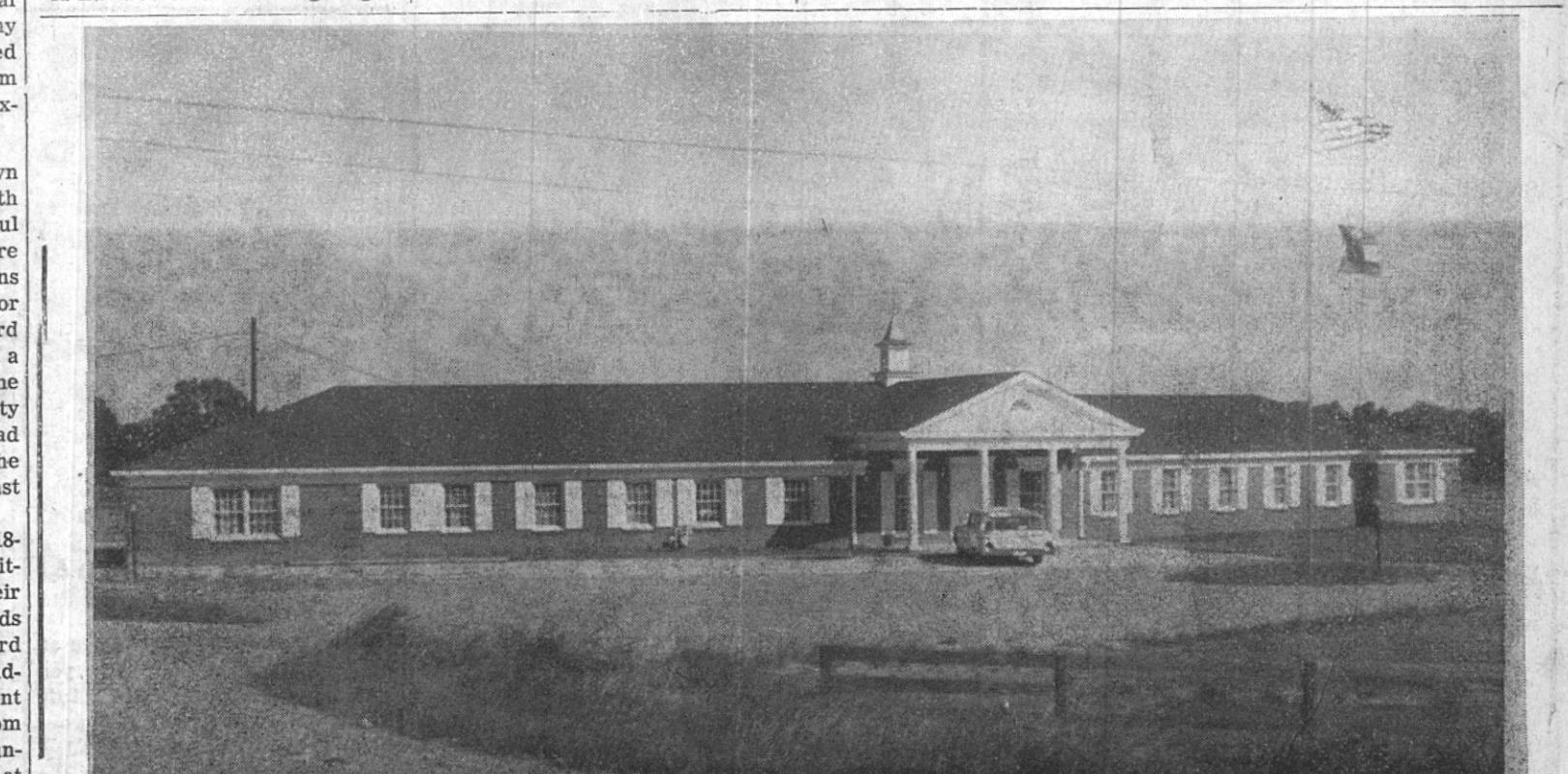
If you're in a hurry to build up savings, the \$100 Series "E" U.S. Savings Bond was made for you. Buy one a month (where you work or bank for five years, and you'll have a nest egg of \$4,856.



BLUE DEVIL WORKHORSE — Donald (Bony) Jones again was the workhorse for the Booneville team as they lost 19-0 to Baldwyn Friday night. Here he picks up a first down as Bearcats Tommy McElroy, 11; Joe Allen, 82; and Kenneth Chism, 41, move in to make the stop.

Booneville moved to the Baldwyn 30 late in the second quarter with the aid of 15-yard personal foul penalty, but couldn't go from there and surrendered the ball on downs at the 32 as the clock ran out for the first half. Midway in the third period Freddie Tollison returned a punt from the Booneville 14 to the Baldwyn 30, but a clipping penalty nullified the play and Baldwyn had possession with a first down at the Booneville 33 to set up their last score.

Starting at their 29 after an 18-yard kickoff return by D. T. Whitfield, the Blue Devils made their only serious threat. Stan Pounds passed to Whitfield on a 46-yard gainer for a first down at the Baldwyn 25 and after two passes went incomplete a screen pass from Kenneth Shackelford to Mike Cunningham was good for a first at the 15. Another pass from Pounds intended for Cunningham was incomplete, Terry Cartwright picked up two at right guard, then Pounds completed a pass to Cartwright for seven yards as the game ended.



The Dedication and Open House of the new Highway Patrol Station, pictured above, will be held Wednesday afternoon, September 23 at 2 o'clock. The governor of Mississippi, the Honorable Paul B. Johnson, will make the dedicatory address. N. S. (Soggy) Sweat will be Master of Ceremonies. The \$75,000 building was completed last

spring. Creekmore Wright, inspector, District 4, cordially invites the public to attend. The event is being sponsored by the Board of Supervisors of the following counties: Alcorn, Tippah, Benton, Union, Prentiss, Marshall, Lee, Itawamba, Tishomingo and Pontotoc.

HOME AGENT NOTES

By CLAIRE T. ROSS

It may take a bit of doing—but the best way to start the day is with a well balanced breakfast. No better reminder is the fact that September is "Better Breakfast Month."

As the children start back to school, mothers be sure that each one — from the first grader to the teen-ager — eats a good breakfast. It will perhaps take getting up a little earlier, but it will be worth it in health and better dispositions. At the same time it will keep down the "eleven o'clock slump."

I found with some of my students when I taught school.

In science classes and in home-making classes my students kept a record of the foods eaten during the day for an entire week. It was interesting to note that, in most cases, the better-than-average student was accustomed to a whole-some breakfast.

It properly is to cool the chicken to room temperature, wrap it in foil or put in a plastic bag and place in your freezer or freezing compartment of your refrigerator. Thaw at room temperature.

You know that wrapped chicken in the refrigerator gets that "left-over" taste. The research finding showed that leftover chicken stored properly in the freezer showed no noticeable loss in quality of taste or appearance.

Ronny L. Martin On Attack Carrier

Ronny L. Martin, interior communications technician fireman, USN, son of Mr. and Mrs. Roy C. Martin of Booneville, is serving aboard the attack aircraft carrier USS Oriskany.

Oriskany departed the Puget Sound Naval Shipyard at Bremerton, Wash., at the end of August to return to her home port of San Diego, Calif., following a 4-month overhaul at the shipyard.

Upon returning to San Diego, Oriskany will operate off the coast of Southern California conducting carrier qualifications for aircraft squadrons based at West Coast Naval air stations.

Plant Winter Grazing

Small grain or ryegrass or a mixture should be planted now. Use a 60-60-60 fertilizer at planting time (12-12-12 mixed fertilizer or a similar mixture). Plant one acre per cow.

MOVING

LOCAL or LONG DISTANCE
JUST CALL,
WE DO IT ALL

— Storage —
One Item or a House Full

BILL MORGAN
Phone 728-4124

**MILTON
MOTOR CO.**
Booneville, Miss.



NEW — USED

Cars — Trucks

Sales & Service

NOTICE TO BIDDERS

RE: ADVERTISEMENT FOR BIDS
TO FURNISH SUPPLIES TO THE
CITY OF BOONEVILLE, MISSISSIPPI
STATE OF MISSISSIPPI
PRENTISS COUNTY

It is the intention of the Mayor and Board of Aldermen of the City of Booneville, Mississippi, to purchase supplies, equipment, materials, etc., as per specifications now on file with the Clerk of this Board for and on behalf of said City for the ensuing year 1964-1965, ending September 30, 1965, at the lowest and best bids:

Said supplies, equipment, materials, etc., are as follows:

Culverts, concrete, all diameters, plain and reinforced.

Culverts, metal, all diameters, copper bearing steel, copper bearing pure iron, zinc grip, asbestos bonded, pure iron, copper molybdenum iron, copper steel.

Lumber all No. 1 common untreated 8' up, all dimensions.

Gravel, washed and clay FOB plant.

Blades, grader 1/2x8'x8' Highway Department specifications.

Janitor supplies; toilet tissue, disinfectant, pineoil, soap, mops, brooms, floor sweep.

Gasoline, regular bulk delivery and Ethyl bulk delivery.

Diesel fuel.

Grease, all types

Oil, 20, 30, 40 and 50 SAE

Tires and tubes for automobiles, trucks, tractors and motor patrol.

Asphalt, Mc-1, Ac-15, and Rc-2.

Such sealed bids to be filed with the Clerk of this Board at the City Hall in Booneville, Mississippi, on or prior to 7:30 o'clock p.m. CST, on October 6, 1964.

The Mayor and Board of Aldermen reserve the right to reject any and all bids.

Done by order of the Mayor and Board of Aldermen of the City of Booneville, Mississippi, on this September 1, 1964.

O. J. ROBERTSON,
CITY CLERK
(SEAL)

Established Fescue

Fertilize old established fescue and fescue clover with 40 lbs. Nitrogen and 80 lbs. of Phosphate and 80 lbs. of Potash (5-10-10 mixture) per acre.

THE NEWS FROM—
NEW SITE

By MRS. C. L. MCCREARY

Friends of Mrs. Rufus Gann, who is in the Red Bay hospital, underwent surgery last week; Mr. Marshall Wilson who is in the hospital in Memphis, and the ones in the local hospital, we wish for all a speedy recovery.

Bro. and Mrs. B. C. Carr of Lakeland, Fla., spent several days recently with her parents, Mr. and Mrs. C. T. Brown, and other relatives.

Mr. and Mrs. J. D. Crowe and Carley; also Mr. and Mrs. Eston Dean visited Mr. Lester Crowe in the Veterans Hospital in Memphis during the weekend and reported him a very sick man.

Mr. and Mrs. Richard Denson and Tim of Memphis spent the weekend with his parents, Mr. and Mrs. David Denson. On Sunday, Mr. and Mrs. Rastee Denson and Randy spent the day and they all attended church at East Prentiss. Also, other afternoon and supper guests were Mrs. J. N. Holsman and children of Luka.

James L. Lindsey of Memphis is spending two weeks with his parents, Mr. and Mrs. R. L. Lindsey and Dwight. On Wednesday they all went to Battle Creek, Michigan and spent a few days with their daughter, Mr. and Mrs. Allen Hapner and Karan. On their way home they came by Union Pier, Michigan and spent several hours with his brother, Mr. and Mrs. Milton Lindsey and other relatives.

Mr. and Mrs. Jack Barron and boys of Forrest Park, Ill., are spending a couple of weeks with his parents, Mr. and Mrs. Travis Barron and Jimmy and other relatives here and elsewhere.

Mr. and Mrs. Leamon Malone and children of Byhalia, Miss., spent the weekend with her parents, Mr. and Mrs. Jim Moore and he attended Sunday School at East Prentiss.

Danny and Rickey Mayo spent the weekend in Belmont with their grandparents, Mr. and Mrs. Lester Mayo and Mack.

Those employed at Dothan, Ala.,

NOTICE TO CREDITORS

Letters of Administration having been granted on September 14, 1964 by the Chancery Court of Prentiss County, Mississippi, to the undersigned upon the estate of Herschel B. Windham, deceased, notice is hereby given to all persons having claims against said estate to present the same to the Clerk of said court for probate and registration according to law within six (6) months from this date, or they will be forever barred.

This September 17, 1964.
MRS. ESTELNE B. WINDHAM
ADMINISTRATRIX. 25-ttc

EXECUTORS' NOTICE TO CREDITORS:

Letters Testamentary having been granted on September 14, 1964 by the Chancery Court of Prentiss County, Mississippi to the undersigned as Executors of the Estate of C. G. Kizer, deceased, notice is hereby given to all persons having claims against said estate to present the same to the Clerk of said Court for probate and registration according to law, within six months from this date, or they will be forever barred.

This September 17, 1964.
ELLIS KIZER,
CLIFFORD H. KIZER,
EXECUTORS. 25-ttc

CHANCERY COURT SUMMONS
The State of Mississippi,

NO. 8498
To Mary Bennett, address unknown after diligent search and inquiry.

You are commanded to appear before the Chancery Court of the County of Prentiss, in said State, on the 4th Monday of November (23rd) A.D., 1964 to defend the suit in said Court of John Alvin Bennett vs. Mary Bennett, wherein you are a Defendant.

This 4th day of September A.D., 1964.
Bluford Allen, Clerk
By: Peggy Ryan, D. C.
(SEAL) 25-ttc

CATCH
LITTLE LEAKS
NOW

WITH SERVICING
AT

Billingsley

COOLING
SYSTEMS
CHECKED &
REPAIRED

If you've ever had to replace an engine block in your car... you know how important a "little leak" can be! Let us give your car a complete check-up today. Our OK USED CARS get the same kind of service... and they're guaranteed!

BILLINGSLEY
Chevrolet Co.

First Baptist WMS
Holds Meeting

Twenty-two members of the Woman's Missionary Society of the First Baptist Church met at the lovely country home of Mrs. Nelson Baldwin on Monday night, September 7 for the monthly Royal Service program. The meeting was held on the patio. Mrs. R. A. Kimbrell presided at the meeting. After Mrs. Billy Roby read the missionary prayer list, Mrs. Carmon Walden led in prayer.

Mrs. Kimbrell led the program on "A Determining Factor in World Missions." Mrs. E. O. Roden and Miss Sue Kimbrell gave several experiences of missionaries which illustrate how individuals and churches are becoming involved in promoting racial understanding and cooperation. These experiences revealed how people have had courage to be Christian in their relationships.

Plans were made for the members to go to the County Home Sunday, Sept. 20 at 2:30 p.m. to conduct a devotional. Mrs. Malcolm Carter closed the meeting with prayer.

The Pearl Caldwell Circle served delicious refreshments.

Sheriff's Sale Of Land For Taxes, Prentiss County

THE STATE OF MISSISSIPPI, COUNTY OF PRENTISS

I, Gerald Green, Tax Collector of the County of Prentiss, in said State will sell on the Third Monday of September A.D., 1964, at the front door of the Court House of said County in the City of Booneville, Mississippi, to the highest bidder or bidders, for cash, if any there be, all the following described lands, situated in said County, on which the taxes remain unpaid at that date to-wit:

Name of Owner	Division of	S	T	R	Acres Val.	Co. Tax	Shr. Cost	Printer's Fee	Damgs.	Chancery Grand
Allen, Ben — Miller Pt SW½					100	7.80	1.25	1.00	.47	10.62
Allen, Koot Smith — Wroten Pt NW¼		10	5	7	150	11.70	1.25	1.00	.70	14.75
Allred, Leon — Wroten Pt NE¼		15	5	7	150	11.70	1.25	1.00	.70	14.75
Allen, Roy — Wroten Pt SW¼		15	5	7	600	46.80	1.25	1.00	2.81	51.96
Bangren, Vernice — Wroten Pt. NE¼		15	5	7	100	7.80	1.25	1.00	.47	10.62
Cole, Ethyl — Miller Pt. SW¼		10	5	7	100	7.80	1.25	1.00	.47	10.62
Comer, Thomas — Williams Unn. Pt NW¼		16	5	7	1600	56.00	1.25	1.00	3.36	59.36
Comer, Thomas — Williams Pt 1, 2 & 3 Blk. 5					1670	130.26	1.25	1.00	7.82	140.43
Comer, Thomas — Miller Crest 14 & N½ 15 Blk. 1					800	62.40	1.25	1.00	3.75	68.50
Comer, Thomas — Miller S/D 1 Lt.					1200	93.60	1.25	1.00	5.61	101.56
Comer, Thomas — Miller S/D 1 Lt.					200	15.60	1.25	1.00	.93	18.88
Comer, W. H. — Williams Pt. 35½					1500	52.50	1.25	1.00	3.15	55.65
Consumer Investment Corp. — Miller Pt. SW¼		10	5	7	400	31.20	1.25	1.00	1.87	35.42
Daniels, Floyd — Branham 1 to 4 Blk. 1					100	7.80	1.25	1.00	.47	10.62
Dent, Earle — Miller Pt. SW¼		10	5	7	100	3.50	1.25	1.00	.21	6.06
Dent, Mose — Miller Pt SW¼		10	5	7	120	4.20	1.25	1.00	.25	6.80
Ford, T. L. & Ramsey, B. C. — Wroten Pt SW¼		15	5	7	100	7.80	1.25	1.00	.47	10.62
Gresham, George — WB&C Pt 6					100	7.80	1.25	1.00	.47	10.62
Grizzard, Aaron — Wroten Pt NE¼		10	5	7	250	19.50	1.25	1.00	1.17	23.02
Grizzard, James Otis — Wroten Pt NE¼		10	5	7	200	15.60	1.25	1.00	.93	18.88
Hudson, Andrew — Miller Pt SW¼		10	5	7	150	11.70	1.25	1.00	.70	14.75
Jackson, W. A. — Williams UNN					1200	42.00	1.25	1.00	2.52	46.87
Johnson, Frankie — Wroten		10	5	7	300	10.50	1.25	1.00	.63	13.48
Johnson, Oscar — Wroten Pt NE¼		10	5	7	250	8.75	1.25	1.00	.53	11.63
Johnson, Sula Shinault—Branham 11 & 12 Blk 2					250	8.75	1.25	1.00	.53	11.63
Jones, Bobby Lee — Miller Pt SW¼		10	5	7	300	23.40	1.25	1.00	1.41	27.16
Jones, Hollis — Williams, 25					600	46.80	1.25	1.00	2.81	51.96
McCloud, Marie, Et al — Miller Pt SW¼		10	5	7	30	2.34	1.25	1.00	.14	4.83
McGee, Luther — Wroten Pt NW¼		10	5	7	450	35.10	1.25	1.00	2.10	39.55
O'Neil, Jim B. — Miller Pt SW¼		10	5	7	500	39.00	1.25	1.00	2.34	43.69
Peeke, W. L. — Wroten Pt NE¼					350	27.30	1.25	1.00	1.64	31.29
Pierce, Tyson — Wroten Pt NW¼		10	5	7	150	5.25	1.25	1.00	.32	7.92
Ray, Etoy — Wroten Pt SE¼		10	5	7	100	7.80	1.25	1.00	.47	10.62
Rodgers, Mattie — Wroten Pt NW¼		10	5	7	250	19.50	1.25	1.00	1.17	23.02
Slayton, L. A. — Shinault Hts. Lt. 41 Pt NE¼		16	5	7	700	54.60	1.25	1.00	3.27	60.22
Slayton, L. A. — Shinault Hts. Lt. 72 Pt NE¼		16	5	7	900	70.20	1.25	1.00	4.21	76.76
Walls, Tom Est. — Branham 1 to 7 Inc. Blk. 3					150	11.70	1.25	1.00	.70	14.75
Walls, Tom Est. — Branham 1, 2, 3 & 5, 6, 7 Blk. 4					150	11.70	1.25	1.00	.70	14.75
Walls, Tom Est. — Branham 1 to 13 & 16 to 22 Blk. 5					150	11.70	1.25	1.00	.70	14.75
Walls, Tom Est. — Branham All 10					150	11.70	1.25	1.00	.70	14.75
Adams, R. B. — Bald. Pt SW¼		36	6	6	800	41.20	1.25	1.00	2.47	46.02
Barber, Vera Wallis — Bald. Pt SE¼		35	6	6	1150	59.23	1.25	1.00	3.55	65.13
Betts, Chester — Bald. Pt SE¼		35	6	6	100	5.15	1.25	1.00	.31	7.81
Bishop, Ruby — Bald. Pt NE¼		35	6	6	300	8.55	1.25	1.00	.51	11.41
Bradley, Charley — Bald. Pt NW¼		35	6	6	300	15.45	1.25	1.00	.93	18.73
Carlock, Ira — Marvia Pt 5, 6 & 7		36	6	6	400	20.60	1.25	1.00	1.23	24.18
Coleman, C. C. — Bald. Pt SE¼		35	6	6	20	1.03	1.25	1.00	.06	3.44
Harris, Claiborne, Est. — Bald. Pt SE¼		35	6	6	100	5.15	1.25	1.00	.31	7.81
Key, Prince — Bald. Pt SE¼		35	6	6	220	6.27	1.25	1.00	.38	9.00
Marshall, Littell — Bald. Pt SW¼		35	6	6	300	8.55	1.25	1.00	.51	11.41
Marshall, Bobby James — Bald. Pt SW¼		35	6	6	300	8.55	1.25	1.00	.51	11.41
Price, Otto — Bald. Pt SW¼		35	6	6	350	18.03	1.25	1.00	1.08	21.46
Stewart, Eddie Eugene — Bald. Pt NW¼		35	6	6	250	7.13	1.25	1.00	.43	9.91
Akins, G. L. — Bell Pt 2 Blk 1		40			40	3.40	1.25	1.00	.21	5.96
Roberts, Ruble — Pt SE¼		13	6	5	6/10	30	2.53	1.25	.15	5.03
Walden, Earl J. — Pt. SE¼		13	6	5	¼	130	10.93	1.25	.66	13.94
Blankfield, Inez — ¼ A. Pt SE¼		13	6	5	¾	30	2.54	1.25	.15	5.04
Roberts, Bobby — Pt SE¼		13	6	5	¼	230	10.59	1.25	.63	13.57
Reynolds, R. W. — Pt SE¼		11	4	6	2	120	9.40	1.25	.57	12.32
Eaton, Charles — Pt NE¼		28	4	6	6	100	7.92	1.25	.48	10.75
Pioneer Finance Co. — 1 A. Pt SE¼		28	4	6	1	220	17.18	1.25	1.03	20.56
Pioneer Finance Co. — 1 A. Pt SE¼		28	4	6	1	220	17.18	1.25	1.03	20.56
Jackson, Edward — 1 A. Pt SE¼		28	4	6	1	220	17.18	1.25	1.03	20.54
Mid-State Homes — 1 A. SW¼		6	5	6	1	20	1.56	1.25	.09	4.00
Koon, Billy F. — Pt NW¼		24	5	6	1½	410	14.38	1.25	.87	17.60
Murley, C. L. — N Pt NE¼		17	6	6	115	930	44.32	1.25	2.66	49.33
Deeb Const. Co. — 1 A. Pt SW¼		27	6	6	1	250	21.02	1.25	1.26	24.63
Murphy, Myrl — Pt N½ NE¼		33	6	6	1	30	3.54	1.25	.15	5.04
Mears, William — Pt N½ NE¼		33	6	6	1	300	25.22	1.25	1.51	29.08
Thorn, Rodney — ½ A. SE¼		34	4	7	½	200	15.62	1.25	.93	18.90
Comer, Thomas — Pt SW¼		4	5	7	900	70.20	1.25	1.00	4.21	76.76
Comer, Thomas — Pt SW¼		4	5	7	1½	900	70.20	1.25	1.00	4.21
Simmons, Shirley — Pt NW¼		10	5	7	100	7.80	1.25	1.00	.47	10.62
Grizzard, Clifton — Pt NE¼		10	5	7	¾	300	23.47	1.25	1.41	27.23
Bearden, Willie — Pt NE¼		10	5	7	4/5	150	11.72	1.25	1.00	14.77
Johnson, Oscar — Pt NE¼		10	5	7	¼	250	19.50	1.25	1.00	23.02
Moore, Bill — 1 A. Pt SW¼		12	5	7	1	20	1.56	1.25	.09	4.00
Moore, Bill — 1 A. W½ SE¼		12	5	7	1	20	1.56	1.25	.09	4.00
Little, Claude Est. — Pt SW¼		13	5	7	11	300	10.50	1.25	.63	13.48
Grammer, R. T. — Pt NW¼		14	5	7	1/8	250	8.75	1.25	.53	11.63
Dorman, Mammie — Pt NW¼		14	5	7	2/10	50	3.90	1.25	.24	6.49
Dorman, Mammie — Pt NE¼		15	5	7	1/10	20	1.56	1.25	.09	4.00
Ballard, J. E. — Pt NE¼		15	5	7	½	600	46.80	1.25	2.81	51.96
Moore, James L. — Pt NW¼		22	5	7	1/8	230	17.94	1.25	1.08	21.37
Hutchenson, Fred — Pt. NE¼		23	5	7	¾	230	17.94	1.25	1.08	21.37
Hutchenson, T. R. — Pt NE¼		23	5	7	¾	230	17.94	1.25	1.08	21.37
Mid-State Homes — Pt NE¼		23	5	7	¾	160	12.48	1.25	.75	15.58
Wood, Mrs. Viola Nichols—Pt. NW¼		24	5	7	1½	150	11.73	1.25	.70	14.78
Mid-State Homes — Pt NW¼		24	5	7	½	220	17.17	1.25	1.03	20.55
Home Security Co. — Pt SE¼		26	5	7	1	170	13.28	1.25	.80	16.43
Stephens, K. A. — Mid S Pt SE¼		28	5	7	¾	50	1.82	1.25	.11	4.28
Cole, Calvin — Pt NE¼		1	6	7	¼	210	8.39	1.25	.57	12.31
Shouse, Wm. C. — Pt SW¼		3	6	7	1	160	6.74	1.25	.41	9.50
Comer, W. H. — E½ SW¼		4	6	7	80	430	37.99	1.25	2.28	42.62
Comer, Mildred M. — W½ SW¼		4	6	7	80	410	36.15	1.25	2.17	40.87
Mid-State Homes, Inc. — ½ A NE¼		4	6	7	½	20	1.71	1.25	1.00	.16
McKinney, Cecil C. — ½ A NE¼		5	6	7	½	30	2.56	1.25	.15	5.06
Leeds Homes, Pt NE¼		5	6	7	2 6/10	100	8.55	1.25	.51	11.41
Mid-State Homes, Inc. — Pt NE¼		5	6	7	1	30	2.57	1.25	.15	5.07
Mid-State Homes, Inc. — ¼ A NE¼		5	6	7	120	10.20	1.25	1.00	.61	13.16
Comer, Mildred M. — NE¼ NW¼		8	6	7	40	160	14.40	1.25	.87	17.62
Comer, T. H. — Mid Pt NE¼		8	6	7	80	360	31.90	1.25	1.92	36.17
Comer, Mildred M. — NE¼ NW¼		9	6	7	40	160	14.40	1.25	.87	17.62
Comer, T. H. — W½ NW¼		9	6	7	80	400	35.30	1.25	2.12	39.77
Beene, Mrs. Avo B. — S Pt NE¼		1	7	7	30	120	10.80	1.25	.65	13.80
Adams, R. B. — SE¼ NE¼		14	7	7	40	310	26.75	1.25	1.61	30.71
Henderson, Billy — Pt NE¼		30	4	8	½	20	1.54	1.25	.09	3.98
Vandevander, Mary — 30 A. NE¼		6	5	8	30	270	9.91	1.25	.80	12.86
Odum, Alvie — 1 A. Pt NW¼		7	5	8	1	130	10.16	1.25	.61	13.12
Morgan, Lee — 10 A. SW¼		9	5	8	10	50	4.10	1.25	.24	6.69
Oden, D. T. — Pt NE¼		29	5	8	¾	10	.80	1.25	.05	3.20
Strickland, G. E. — N½ NW¼		12	6	8	80	740	27.08	1.25	1.62	31.05
Dunna, W. C. — Pt NW¼		16	6	8	1	20	.72	1.25	.04	3.11
Gann, William W. — Pt SW¼		17	6	8	¾	230	8.05	1.25	.48	10.88
Keeton, Mrs. Amy T. — W Pt NW¼		1	7	8	70	280	23.24	1.25	1.39	26.98
Montgomery, Harold — Pt NW¼		4	7	8	¾	350	27.30	1.25	1.64	31.29
Green, J. C. Est. — Pt S½ NW¼		10	7	8	½	10	.79	1.25	.05	3.19
Wheeler, J. O. — Pt E½ NW¼		7	4	9	1	10	.80	1.25	.05	3.20
Witt, James L. J. — Pt SE¼		27	4	9	¾	230	17.95	1.25	1.08	21.38
Duncan, W. H. — Pt NW¼		32	4	9	2	10	.82	1.25	.05	3.22
Osborne, W. J. — N½ NW¼		33	4	9	80	560	44.98	1.25	2.70	50.03
Rhoads, Mrs. Evelyn — Pt SE¼		15	6	9	97½	650	51.75	1.25	3.11	57.21
Rhoads, W. R. — Pt NE¼		16	6	9	40	160	13.28	1.25	.80	16.43
Rhoads, Mrs. Evelyn — Pt NW¼		20	6	9	154	620	51.44	1.25	3.09	56.88
Rhoads, Mrs. Evelyn — Pt NE¼		21	6	9	58½	300	24.33	1.25	1.46	28.14
Rhoads, Mrs. Evelyn — SE¼		21	6	9	160	720	59.36	1.25	3.56	65.27
Rhoads, Mrs. Evelyn — Pt NW¼		22	6	9	87½	560	44.73	1.25	2.68	49.76
Rhoads, Mrs. Evelyn — SW¼ & Pt E½		22	6	9	477½	2770	224.01	1.25	13.44	239.80
Rhoads, Roy — N Side NW¼		27	6	9	76	300	23.40	1.25	1.41	27.16
Rhoads, Roy — NE¼		27	6	9	160	920	74.36	1.25	4.46	81.17
Rh										



"THIS IS YOUR JOB", says MSCW Dean of Students, Miss Margaret Jameson, left front, to North Mississippi girls at MSCW on the campus for leadership workshop. From left, seated, Miss Jameson, Sarah Ruth Henson of New Albany and Nancy Lippincott of Grenada. Standing, from left, Mary Grace Hays of Sardis, Patricia Thomas of Tupelo and Martha Ruth Hill of Booneville.

Sensing The News

By THURMAN SENSING
Executive Vice President
Southern States Industrial Council

MEDICARE FOR POLITICIANS

In pushing Medicare amendments through the Senate earlier this month, the Johnson Administration endeavored to improve its own political health in the crucial period before the fall elections. While the effort may have done Mr. Johnson some good in certain quarters, it did nothing constructive for the fiscal health of the United States. In the long run, the Medicare provisions, if written into law, would cause suffering in this country.

It goes without saying that the

cause of better health and the cause of Medicare are not one and the same. The liberals have no monopoly on concern for elderly people in need of care. The conservative is just as determined as the next man that no one in this country undergoes needless suffering. But the conservative also is determined that the provisions for medical care be soundly designed and not injurious to this entire people.

If it were possible just to pass a law and guarantee every citizen that he would have all the medical care he wants, that would be very pleasant. But fundamental improvement in medical care cannot be legislated in that manner. The danger is that quickie legislation will create additional costs that will endanger our entire medical system.

There always is the danger, for

example, of politicians setting up a privileged class of beneficiaries. For example, the Johnson amendments to a House-passed Social Security bill single out 18 million elderly persons for special attention. Provided for in the amendments are 45 days of paid hospitalization; 60 days of nursing home care a year; outpatient treatment, and home visits by nurses.

Those who aren't covered may justly ask why one group should be especially favored. What's the justice in the Johnson amendments? Is the elderly person with a lung condition more deserving of aid than the young father who must borrow money to pay for treatment of a bone disease from which one of his children suffers? Is the middle-aged man with a heart attack, who has paid for voluntary insurance over the years, less deserving?

Consider the millions of Americans who for years have regarded hospitalization insurance a normal family responsibility. They have been self-reliant and self-denying, so that they would not be a burden on the public. Then they are penalized under the Johnson Administration, while those who have shown no similar self-reliance and responsibility are taken care of.

Here we see the whole injustice of the Johnson Administration's liberal approach which favors the citizens who has not done his part or has failed to live up to his personal responsibility. The benefits for the drones come out of the pocket of the citizen who has done his share. This is cruelly unfair.

Aside from this, there is the matter of dangerous fiscal policy. Sen. Spessard Holland (D., Fla.) has pointed out that the Johnson amendments "would bring the (social security) payroll tax to 10.4 per cent or more." He said that "this to my mind marks the beginning of a destructive process which might well destroy the entire social security structure." Sen. Sam Ervin (D-N.C.) also has declared that it is very wrong to "tie a health program for the

Oats For Grain

The most outstanding grain yields' varieties of oats are Mid-South, Moregrain and Suregrain according to variety test results at Mississippi Experiment Stations. The Mid-South variety is blight resistant. Treat seed oats with Ceresan M or Panagen 15 or a similar material to help control leaf disease.

American people to the social security system." Doing this, he vows "is an affront to sound fiscal policy, which must be observed if the social security system is to be saved or if we are to avoid in this country the ultimate nationalization of business and industry."

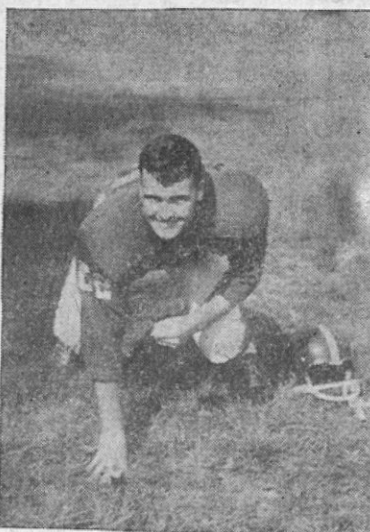
A total social security tax upon payrolls in excess of 10 per cent is a terrible burden. The public should understand that it is just another income tax.

The truth is that the Medicare provisions were brought up for a quick vote in the Senate, not because of any pressing health need on the part of the American people, but because the Johnson Administration was thinking of its own political health. The citizenry of this country should bear this in mind this fall, and realize the danger of having quack political doctors prescribe snake oil remedies for the republic.

Boosters Club Picks Players Of Week

This football season the Blue Devil Boosters Club has a selection committee which each week will name the outstanding linemen and backfield player in the game the previous week.

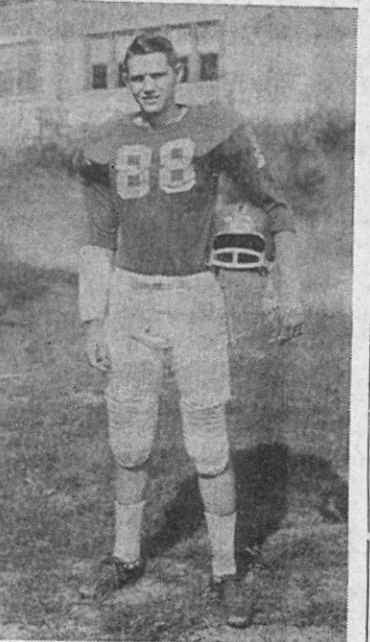
Pictured below are the players selected for their performance in the Pontotoc and Baldwin games.



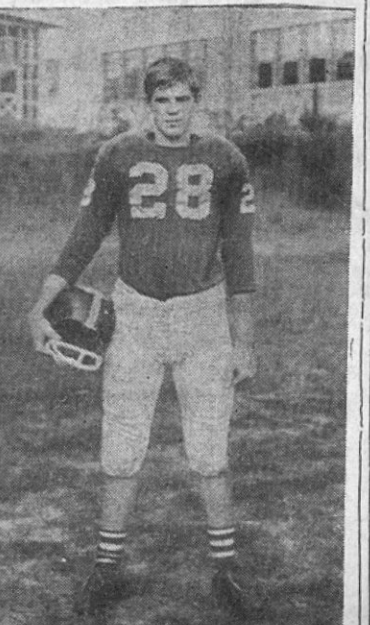
EDDIE LINDSEY
Lineman, Pontotoc Game



DONALD (BONY) JONES
Back, Pontotoc Game



BILL MURPHY
Lineman, Baldwin Game



MIKE CUNNINGHAM
Back, Baldwin Game

ORDER OF THE BOARD OF TRUSTEES OF THE NORTHEAST MISSISSIPPI HOSPITAL LOCATED AT BOONEVILLE, MISSISSIPPI. PROVIDING FOR THE PURCHASE AND THE AWARDING OF CONTRACTS FOR MATERIALS, SUPPLIES, MEDICINES AND MISCELLANEOUS ITEMS NEEDED IN THE OPERATION OF THE HOSPITAL FOR THE TWELVE MONTHS PERIOD BEGINNING OCTOBER 1, 1964.

It is hereby ordered and declared by the Board of Trustees of the Northeast Mississippi Hospital, duly in session, that it is the intention of this Board to receive sealed bids until 4 p.m. on the 1st day of October 1, 1964 and thereafter to let and award contracts to the lowest and best responsible bidder for the purchase of the materials, supplies, medicines, and other miscellaneous items necessary and required for the operation of the Northeast Mississippi Hospital for the 12 month period beginning October 1, 1964. Bidders shall bid the basic price at which the various articles and

items will be furnished, the same to be requisitioned and purchased by the Board of Trustees acting through the Administrator as it elects and as said articles and items are required, the Board not being required to purchase any specific maximum amount of any such articles, supplies, or materials. The list of materials, supplies, medicines, and necessary items to be so purchased and on which bids are desired being as follows:

FOODS AND SUPPLIES FOR THE DIETARY DEPARTMENT: Flour, meal, sugar, butter, meats, condiments, vegetables, milk, eggs, coffee, bread, canned goods and miscellaneous items.

OTHER DIETARY SUPPLIES: Dishwashing compounds, paper napkins and allied items.

HOUSEKEEPING SUPPLIES: Brooms, mops, floor wax, cleaning compound, towels, insect spray, soaps, toilet paper, electrical supplies, disinfectants, deodorants, and allied items.

LAUNDRY SUPPLIES: Linens,

thread, aprons, covers, soap, starch, bluing, bleaching powder and miscellaneous allied items.

MEDICAL AND SURGICAL SUPPLIES: Dressings, blades, cast material, maternity supplies, and cotton dressings, lotions, sutures, syringes and needles, tubing, surgical soaps, and miscellaneous allied items.

X-RAY AND RADIOLOGY SUPPLIES: X-Ray films, solutions, tracing paper, film preserves and miscellaneous allied items.

LABORATORY SUPPLIES: Glassware, solutions, paper and miscellaneous allied items.

MISCELLANEOUS SUPPLIES: Salt, water conditioner, motor oil and grease, water, gas, gasoline, electricity, lawn supplies and miscellaneous maintenance items.

In all the foregoing headings there are small items too numerous to name but a list of which will be supplied to any interested bidder by the undersigned administrator on request.

DRUGS: Various and sundry miscellaneous drugs, including solutions, tablets, capsules, injectables, liquids, powders, and granular items, such as required in the operation of a general hospital.

(Under the heading of drugs, there are hundreds of items too numerous to list in this order which items are well known to all drug houses. The undersigned administrator will supply to any interested bidder a list of these items.)

It is further ordered that this order should be published as the law directs, as the notice to bidders, and the Board reserves the right to reject any and all bids. The right is reserved, if two bids are identical, to award a portion of the contract to more than one bidder.

ORDERED THIS 14th DAY OF SEPTEMBER, 1964.

D. H. Prichard, President
Eddie W. Caveness, Jr., Secretary

Millions of Americans today use the U. S. Savings Bonds' Payroll Savings Plan to make saving easier.

LIBERTY

ALWAYS BUY THE BEST FOR LESS

PLUS UNITED STAMPS

With \$5.00 Purchase or More

SUGAR 5 LBS 19c

With \$5.00 Purchase or More

PIES Jumbo Doz. 9c

\$10.00 Purchase for Sugar and Pies

BREAD

All Reg. 17c

Loaf

10c

PEANUT BUTTER

Big Top

12-oz. jar 39c

Orange Drink

Wagner

4 Qt. Bottle \$1

Grape Jelly

Kraft

3 18-oz. Jars \$1

SALAD DRESSING

Miracle Whip

Qt.

49c

SHORTENING

Snowdrift

3-lb. can 59c

KELLY'S

Spaghetti & Meat Balls

5 Cans

\$1.00

POTTED MEAT

Kelly's

10 Cans \$1.00

BEEF STEW

Dinty Moore

24-Oz. Can 39c

GERBER'S

BABY FOOD

Strained

3 Cans 29c

Fryers

Cut Up Tra-Pak lb.

29c; Whole lb. 27c

MISS LIBERTY

BACON

lb.

49c

PIC-NIC

HAMS

lb.

33c

Pork Chops

End Cut lb.

49c; Center Cut lb. 59c

BANANAS, lb. 10c

RUTABAGAS, lb. 7c

GRAPES, Red, lb. 15c

PEPPERS, each 5c

200 FREE UNITED STAMPS With Coupon and \$10.00 purchase

300 FREE UNITED STAMPS With Coupon and \$15.00 purchase

EXPIRES 9-23-64

EXPIRES 9-23-64

Spruce up

with
Wood-N-Stream

Sport-Fitted
Boots and Shoes



Going hunting this fall? Better stop in and see our complete selection of Wood-N-Stream Sport-Fitted Boots and Shoes, first.

Once you "get the feel" of Wood-N-Stream, you'll know this is your boot . . . Sport-Fitted to your outdoor needs.

FREE! Nothing to buy. We'd like you to have a three year old Cadillac Blue Spruce seedling ready for planting. Hurry, while supply lasts.

Moore's Men's Store

The Banner Independent

"Over Half a Century of Service to Prentiss County"

Consolidated October 31, 1957

The Booneville Banner, Est. 1898 — The Booneville Independent, Est. 1923

TELEPHONE PA 8-5079

Entered as Second Class Matter at the Post Office at Booneville, Mississippi, under the Act of Congress of March 3, 1879.

SUBSCRIPTION RATES —

In Prentiss, Itawamba, Tishomingo, Alcorn, Tippah, Union, and Lee Counties:
1 year—\$3.50 6 months — \$2.00 2 years—\$6.00
Outside the above area:
1 year—\$5.00 6 months — \$3.00 2 years—\$8.50

Published each Thursday by the Booneville Printing Company, Booneville, Mississippi.
OWNER & PUBLISHER WILLIAM E. (ED) JOHNSON

Constitution Week, September 17-23

This is Constitution Week, September 17-23, when we recall the great heritage of individual freedom which is given to us by our Constitution.

But a simple comparison with the Soviet Constitution, which is similar in wording to the Constitution of the United States of America, is proof that words on a piece of paper do not guarantee freedom of the individual. Only when the Constitution is a living document, bound up in the hearts and lives of the people, does the government reflect their sovereign will. This is our charge and our challenge, and it is especially important in these days when even some of our highest courts and officials are inclined to disregard the intent of the framers of our Constitution.

This nation is as much endangered today by the indifference of millions of people, inheritors

of the traditions and opportunities of this greatest of all nations, to their own duties and responsibilities, as it is by the activities of the open and secret enemies of American institutions.

It is human nature to take an inheritance for granted; to accept it as a matter of course, to think it unnecessary to defend that which others have fought for, that it might be ours.

Yet, institutions and governments do not preserve themselves. They can be preserved only by the alertness of the citizens to the dangers of decay and our willingness to accept our own responsibilities without looking to a socialistic, centralized government to supply our wants and needs.

Our Constitution and our traditional American way of life can only be as strong as the citizens which make up this nation insist that it be.

100 Years Ago—

McClellan Nominated To Oppose Lincoln

By LON K. SAVAGE

One of the strangest political conventions in America's history came to an end 100 years ago this week.

The Democratic National Convention had assembled August 29 in Chicago with the normal purpose of nominating a candidate to oppose Abraham Lincoln in the November election and to write the party's platform. But behind the scenes of the convention, an almost incredible plot unfolded to overthrow United States authority and to establish a Northwest Confederacy in what is now America's Midwest.

The convention attracted a conglomeration of Northerners who opposed Lincoln's war policies; Copperheads, who favored an end to war even if it meant recognition of Southern independence; Constitutionalists who saw their freedoms ending under Lincoln's war measures; men who opposed emancipation of the slaves, and members of the secret "Sons of Liberty" who had hatched up the scheme for a Northwestern Confederacy.

Confederates, Too

Into this group came one Thomas H. Hines, a Confederate captain who dropped in from Canada in civilian clothes with 60 fellow Con-

federates. Secretly, Hines conferred with leaders of the "Sons of Liberty" and listened eagerly to stories of thousands of Northerners who, it was said, would rise against the Lincoln government if they could.

Hines' plan was to organize some sort of Copperhead army, set Confederate prisoners free from the prison camps around Chicago, add them to his army and go to war against the United States.

There was one big flaw in the plan: Hines was dead serious about it, but the "Sons of Liberty" apparently meant to do no more than talk about it. As time passed, Hines found the Copperheads eager conversationalists, but when it came time to put up or shut up, the Copperheads shut up.

Hines finally asked for only 500 Copperheads with which to start, and even they were not forthcoming. Finally, he slipped away into oblivion, and the plan fell apart.

The Platform

But the Copperheads won one victory at the convention. Clement Vallandigham, the Ohio Copperhead who had been expelled from the United States earlier in the war, wangled a position on the party's platform committee and rammed through a resolution that was fraught with controversy. The war, it declared, was a failure and should be terminated immediately.

From there, the convention settled down to the nomination, and it went as predicted. George B. McClellan, the handsome young general whom Lincoln had cashiered after two years of fighting, was nominated for the Presidency. He was a conventional Democrat—and he had the support of thousands of soldiers who had served under him. Ohio Congressman George H. Pendleton was nominated for Vice President.

And thereupon, the Copperhead movement collapsed. McClellan, in accepting the nomination on Sept. 8, immediately disclaimed the "peace plank" of the platform. As a man who had fought in dozens of battles, he could not, for the life of him, accept his party's inference that the fighting had been in vain.

And hardly had the convention ended when the North was filled with talk of victory: victory at Atlanta, victory at Mobile Bay, and coming up, victories in Virginia.

Next Week: Sheridan Wins in the Shenandoah Valley.

Men Of St. Andrew's Presbytery Rally

The Men of St. Andrew's Presbytery will hold their fall rally at First Presbyterian Church, Grenada, Sunday afternoon, Sept. 20.

According to Cecil E. Barnett of Winona, President of the Men, registration will begin at 2:30 p.m., followed by the program, and will conclude with a barbecued chicken supper.

The Rally theme, "A Life of Worship," will be discussed by William Winter, State Treasurer, a layman from Jackson and Grenada; and Rev. Eade Anderson, minister from Greenwood.

Arrangements for this rally have been made to give a full measure of fellowship, inspiration and food.

Everyone Is Looking For A Hard Fought Presidential Race

Everyone is saying that this year's presidential campaign will be the hardest fought of modern times. That seems a certainty, in the light of the characters and positions of President Johnson and Senator Goldwater. Both are politicians of the driving type, and neither gives quarter when matters of power, influence and principle are at stake.

Along with this, a great many informed people think that this election may be the most historically important of the century. For, in their view, out of it could come political realignments that would vastly change the political complexion of the country and determine for a long time to come the course we are to take, both in domestic matters and our attitude toward world affairs.

The big question has to do with what is called the mainstream of present-day American thinking. It is the question that, in the opinion of the conservative groups which make up the hard core of Goldwater supporters, the American people have not had a chance to answer. They argue that the voters have not been given a clear-cut choice between two sharply different philosophies of government. For the most part, their argument continues, there has been an excess of "me-tooism" on the part of Republican candidates, and this has alienated great numbers of voters and played into the hands of the Democrats. The upshot, as they see it, has been the gradual development of a welfare state government which is not wanted by a majority of our citizens.

Next November should certainly tell how much truth there is or isn't in this position. The President and the Senator provide, in their policies, about as broad a difference as anyone could ask. That difference extends to every issue of real consequence. The Administration holds that our intermingled defense and foreign policies are sound and productive; the other side charges timidity, indecision and retreat, and finds grave defects in our military programs. The President is unequivocally committed to the new civil rights bill; Senator Goldwater voted against it—not because he opposes racial equality, but on constitutional grounds. Mr. Johnson solidly backs major extensions of federal aid and relief projects of assorted kinds; Mr. Goldwater holds that these, generally, are wrong in principle and ineffective and excessively wasteful in practice. The rights, obligations and responsibilities of the states are very precious to the Senator, and he sees the increase of federal power as a menace to our very system of government. The President disagrees. Both men and parties, of course, are in agreement in their opposition to the communist tide, but there is a world of difference in the policies they urge to contain and defeat it.

There is no doubt that the Goldwater drive is making deep inroads into the once solidly Democratic South, or that the Democrats are picking up strength in some areas that were once dependably Republican.

Indeed, it's been a long time since there were so many political question marks on the horizon, or when it was so difficult to analyze the hopes, beliefs and loyalties of the electorate. And the stakes—not just for the parties and the candidates, but for all of us—are great beyond measure.

Shortage in teen-age diets can be corrected by the consumption of more milk, fruits and vegetables, nutritionists say.



SGA PROJECT — One of the main projects carried out by the Student Government Association at the Northeast Mississippi Junior College is the second-hand book store. Shown above are students eagerly seeking books for their various courses. Richard Owen, standing right, sophomore and president of the SGA from New Albany, and Sammy Dowdy, seated, sophomore and SGA vice-president from Ingomar, assist the students in making their purchases. Other students, from left to right are: Betty Sue Chase, Pine Grove; Pat Young, Booneville; Dean Dunn, New Site; Randall Downs, New Site; Ronnie Propst, Corinth; Kathy Fulton, New Albany; Betty Wade, New Albany.

Town And Country Garden Club Has Tuesday Meeting

The Town and Country Garden Club met Tuesday morning at 9:30 in the home of Mrs. Webster Cleveland with Mrs. Sidney Finch as co-hostess. The hostesses served a delicious iced drink.

Mrs. Lon Stutts introduced Mr. W. D. Clifton, horticulturist at Northeast Mississippi Junior College. Mr. Clifton gave much needed information on compost beds, pruning, mulching and bulb planting.

The club voted to write Mrs. E. F. Simpson of Memphis for open dates. Mrs. Simpson is much in demand for demonstrations of flower arrangements. She has studied in eight different schools in Japan and also in New York.

Rabid Bat Picture Looking No Better

The rabid bat picture does not look any better for Mississippi, Dr. A. L. Gray, State Health Officer, said today.

Laboratory findings reached a daily high on September 9 when 5

rabid bats were identified. On September 11, 3 positives were found. In the findings of the last two days were specimens from Lowndes and Leflore counties, increasing the area to 20 counties.

"There is no evidence that the rabies infection among bats is subsiding; nor is there any indication that it will soon," Dr. Gray said.

As far as medical science knows, according to the health officer, there is nothing seasonal about the occurrence or the degree of the disease.

Dr. Gray said that it appears the present rabies outbreak has been confined so far to bats. Many animal heads of various types have been examined in the past weeks but none have proved positive.

But he warned that this is no time for pet owners to be complacent about vaccination against rabies.

"As long as we have rabid bats in our midst, every dog and cat should have a current vaccination

The \$25 Series "E" U. S. Savings Bond is an excellent starter size for steady savers. Small enough to be habit forming, yet big enough to count up fast, it sells for only \$18.75. Makes an ideal gift, too.

—one taken within the last twelve months," warned Dr. Gray.

He called on citizens to send bats to the public health laboratory for examination but to exercise care in handling the winged creatures.

Dr. Gray praised the laboratory personnel at the State Board of

Health, who were on duty the Labor Day weekend keeping up with

specimens and who have been working overtime during the "bat scare" in order to process bats and animal heads that have come in.

To date a total of 36 rabid bats have been found since August 11

in the following counties: Bolivar,

2; Hinds, 7; Itawamba, 1; Jones, 2; Montgomery, 1; Sharkey, 1; Simpson, 3; Sunflower, 2; Winston, 2; Yalobusha, 2; Yazoo, 1; Rankin, 3; Washington, 1; Leflore, 1; Madison, 2; Noxubee, 1; Lowndes, 1; Monroe, 1; Prentiss, 1; Alcorn, 1.

WITH \$5.00 PURCHASE NOT INCLUDING CIGARETTES OR TOBACCO

Crackers Premium or Zesta lb. box **9c**
Peas School Day Extra Small 303 can **9c**
Parkay Oleo lb. **9c**

\$10.00 PURCHASE GETS CHOICE OF 2 ITEMS ABOVE

Tomato Juice, Pride of Illinois, 12-oz. cans 6 for 55c
COFFEE, Luzianne Red Label, lb. can 59c
HAWAIIAN PUNCH, Golden, 46-oz. can 29c
VIENNA SAUSAGE, Magnolia 3 cans 25c
Washing Powder, Breeze, free dish cloth, pkg. 29c
Pork Brains, Dubuque, 5½-oz. cans . . . 2 for 25c
BISCUITS, Ballard or Pillsbury . . 3 cans 25c
LEMONS, Fresh and juicy, dozen 25c

Ground Beef lb. **39c; 3 lbs \$1**
Chuck Roast U. S. Choice lb. **49c**
Picnic Bologna Sausage lb. **25c**
Barbequed Chickens Good & Hot ea. **\$1**

WE GIVE AND REDEEM DELTA STAMPS

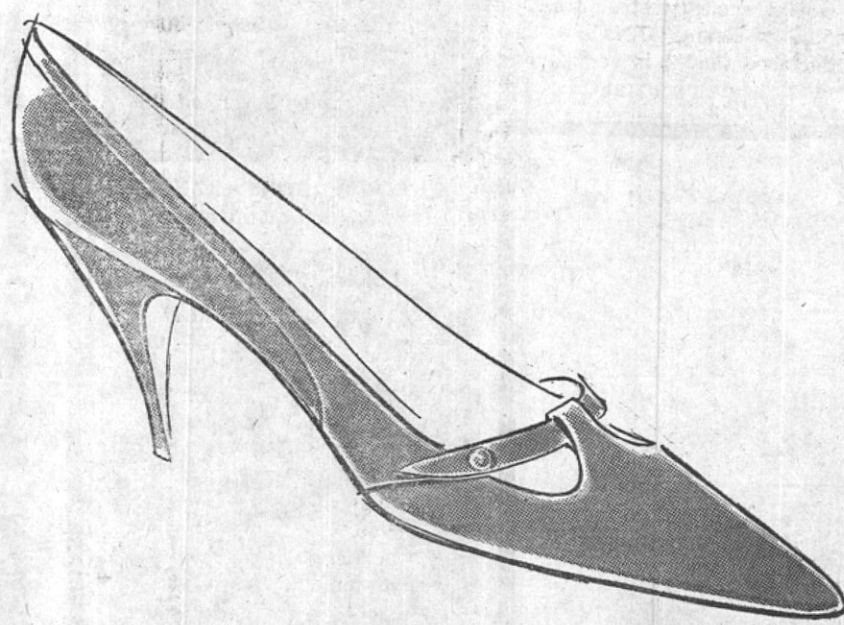
YOUR MONEY BUYS MORE AT—

Gerald's New Lucky - Leadway

Your COMPLETE ONE - STOP Food Store

Here's Shoe News ...

WITH THE PURCHASE OF A PAIR OF SHOES PRICED \$10.00 OR MORE, YOU GET A DOLLAR PAIR OF BEAUTIFUL GORDON HOSE.



Styles for all your fashions and quality craftsmanship. They're so fashionably right at the right prices. Splendid styling to let you know you have your best foot forward this fall.

AIR STEPS
LIFE STRIDES

HEY - DEYS
VELVET STEP

CONNIES
And Others

Every style, every color, every heel height in 4 A's to D widths, sizes 4½ to 11.

Walk in Gray's today. See the new styles, new colors, new textures. Walk away with a flattering pair of shoes -- plus a new pair of hose.

GRAY'S

Prentiss ASCS County News

By CHARLES E. CALVERT, Office Manager

1964 CORN PRICE SUPPORT ANNOUNCED

Price support loans for the 1964 corn crop will be \$1.21 per bushel in Prentiss County. This compares with the 1963-crop loan rate of \$1.18 per bushel for the county.

The 1964 loan rate, plus a price support payment of 15 cents a bushel, gives a total price support rate of \$1.36 per bushel for 1964-crop corn in the county. While the loan rate varies according to the grades and qualities of individual crops, the price support payment per bushel is the same for all farms.

The county loan rate of \$1.21 per bushel is for 1964-crop corn grading No. 3, or No. 4 on the factor of test weight only but otherwise grad-

ing No. 3 except for moisture. Premiums and discounts for other grades and qualities are unchanged from those in effect in 1963.

Price support on the 1964 crop of corn will be available only to farmers participating in the 1964 feed grain program.

The price support program for corn will be carried out through farm- and warehouse-stored loans, purchases, and price support payments. Loans will be based on eligible actual production, while the price support payments of 15 cents per bushel will be on normal production of the harvested acres.

Application for price support loans and purchases may be made

at the ASCS County Office. Loans will mature on July 31, 1965.

STARVED PLANTS SHOW THEIR HUNGER

Someone once said, "If starved plants could only squeal like hungry pigs, we would pay more attention to their fertilizer needs." Even though plants cannot squeal, they have means of telling us of their plant food deficiencies, which we speak of as hunger signs. Of the 92 elements of which the earth is composed, plants require for proper growth considerable amounts of only 10 major elements and minute amounts of a number of others. The major elements are carbon, hydrogen, oxygen and nitrogen which come directly or indirectly from the air and water, and phosphorus, potassium, calcium, sulphur magnesium and iron which come directly from the soil. Copper, zinc, boron, manganese, and perhaps others which come directly from the soil, are required only in minute amounts but are important from the standpoint of plant growth or the well-being of those animals that consume the plants.

The symptoms of a mineral deficiency in the soil may be regarded as the language plants use to tell us of their lacking in proper nourishment. At times, it is very difficult to correctly interpret the symptoms of plant food deficiency in the field, due to other environmental factors constantly affecting the plants. Prolonged periods of adverse weather, insects and diseases may cause symptoms very similar to plant food deficiencies, but where there is a question concerning the deficiencies, chemical tests can be made for calcium, nitrogen, phosphate and potash—the four elements most likely to be deficient. Correction of these deficiencies can be made by applying the amounts of liming and fertilizer materials recommended by soils techniques on the basis of these tests.



THE NEWS FROM—HILL'S CHAPEL

by Mrs. Dewey Pounds

Mr. W. E. Baker spent Sunday with his daughter, Mrs. Eldon Smith and other visitors in the Smith home were Mr. and Mrs. Mont Gardner, Miss Linda Pike and Mr. and Mrs. Lenus Hare and daughter.

There has been a lot of sickness in the community for the past few weeks. We wish for everyone a speedy recovery.

Mr. and Mrs. Claude Ashmore and Mr. and Mrs. R. C. McCalmon were dinner guests of Mrs. Bell McCalmon Sunday.

Mr. and Mrs. Dewey Pounds visited Mrs. Pounds' sister, Mrs. Cleo Laster, Sunday in Tupelo.

Mr. and Mrs. Charlie Isbell have returned home after spending several days in Tusculum, Ala., visiting Mr. and Mrs. K. Parker and family.

Mr. and Mrs. Buster McAnally were among those who enjoyed a birthday dinner at the park for her mother, Mrs. Eunice Johnson. Mrs. Johnson was 79.

Mr. and Mrs. Charles Smith and children have returned home to Jackson, Miss., after visiting Mr. and Mrs. Eldon Smith and Mr. and Mrs. Amos Melton.

Rita and Sherion Gann are spending the week with their cousin, Cathy Corbin of Pisgah.

Mrs. Gene Malone went to Memphis Friday to be with her daughter, Mrs. Junior Paden, who underwent surgery.

Fall And Winter Lice Control

The use of Lintox-D or Lintox-M Spray or Lintox-Dust or M & M Dust or Rotenone-Lindane dust or Simax spray will control lice and flies on cattle. See your County Agent and local dealers.

THRIFT and PATRIOTISM go hand-in-hand for youngsters who buy U. S. Savings Stamps—available at many schools and all post offices at 10 cents, 25 cents and up.

NOTICE OF SALE RE: LAST WILL AND TESTAMENT OF LUCILLE GARDNER, DECEASED

By virtue of a provision of a Decree of the Chancery Court of Prentiss County, Mississippi, rendered on the 18th day of August, 1964, the undersigned, as Administrator c.t.a. of the Estate of Lucille Gardner, Deceased, will, on the 19th day of September, 1964, at the West door of the Prentiss County Courthouse in the City of Booneville, Mississippi, within legal hours, offer for sale and sell to the highest and best bidder for cash the following described real estate situated in the Second District of Prentiss County, Mississippi, to-wit:

Part of the Northwest Quarter of Section 25, Township 5, Range 6 East, bounded as follows: Beginning 69½ rods South of the Northeast corner of said Quarter and run West 65 rods to road, thence South 17 rods, thence East 65 rods to East boundary, thence North 17 rods to the point of beginning.

Also: Part of the Northwest Quarter of Section 25, Township 5, Range 6 East, bounded as follows: Beginning 65½ rods South of the Northwest corner of said Quarter and run East 22 rods for a starting point; run thence South 12½ rods; thence West 65 rods to point of beginning; and

Also: Part of the Northeast Quarter of Section 26, Township 5, Range 6 East, bounded as follows: Beginning 47½ rods North of the Southwest corner and run East 97½ rods to canal, thence North 61½ degrees West 114 rods to the West boundary, thence South 66 rods to the point of beginning.

The above property is being sold for the purpose of partitioning among the devisees of the said estate, in accordance with the above said decree, and the title is believed to be good, but I will convey only such title as is vested in me as Administrator c.t.a. of the Estate of Lucille Gardner, Deceased.

Dated this 19th day of August, 1964.

Carroll Browning,
Administrator c.t.a. 21-5tc

IN RE: I. B. M. CARDS.

Came on to be considered the matter of the County acquiring 40,000 I B M cards for use in the proper keeping of county records.

And it appearing that the sheriff, the chancery clerk and the tax-assessor have agreed to pay substantial amounts of the total costs of said records.

And the board finds that it is to the best interest of the county to procure such records.

It is therefore ordered that the board will, at the regular October, 1964 term, on October 5, 1964, at ten o'clock A.M. receive sealed bids for the furnishing of 40,000 I B M cards, punched and verified to show information as to assessment rolls, levies, assessments, etc.,

It is further ordered that the clerk of this board be and he is hereby directed to give notice to bidders as required by law.

It is further ordered that this board reserves the right to reject any and all bids.

Ordered in regular session on this 9th day of September, 1964.
Charles M. Gordon, President 24-3tc

A Trip Report To Florence, Ala.

Mr. and Mrs. James O. South told today of their accompanying Mr. and Mrs. Willard Anderson to an assembly of Jehovah's Witnesses held in Florence, Ala., at the arena.

"On arriving we first met several people there and then ate supper, which was prepared and served by volunteer Witnesses. We then saw a two-hour color film, 'Around the World With Jehovah's Witnesses,' that showed the unselfish preaching work of Jehovah's Witnesses in spreading the gospel. It was the most Christian thing I have ever experienced. I felt in that stadium like I was in the house of God. Everything was so orderly and quiet, even though there may have been a hundred or more children present, there was no running, no milling around and no nursery either. The children sat with their parents."

"We were so impressed after seeing that film and being with those Christian people, that I felt like I was in another world. Out of 697 in attendance, not one person was smoking inside or outside of the arena. I have to be so careful of crowds that smoke because of my heart condition. I just wish that everyone in Booneville could have been there with those wonderful people."

Billy D. Lindsey Takes Radio Course

FORT GORDON, Ga.—Pvt. Billy D. Lindsey, son of Mr. and Mrs. J. K. Lindsey, 111 Horse Shoe Acres, Booneville, completed an 11-week radio teletype operation course at the Army Southeastern Signal School, Fort Gordon, Ga., on Sept. 11.

Lindsey was trained in the use of radio operation, transmitting and receiving sets and in communications procedures.

The 22-year-old soldier entered the Army last February and completed basic training at Fort Polk, La.

Lindsey is a 1960 graduate of Booneville High School. He attended Northeast Mississippi Jr. College, Booneville, and Delta State College, Cleveland.

HOUSE BILL NO. 822

An act requiring publication of the name and address of all applicants for registration to vote; and for related purposes.

Carol Ann Crowe, East Booneville
William D. Wilson, Martin Hill
William Howard Strange, West Booneville

Gerald Armstrong, Odum Hill
Barbara Jean Floyd, Marietta
Doyle Pope, West Booneville
Richard Allen, East Booneville
James Downs, West Booneville
Emmitt Wayne Carr, New Hope
Paul Dennis Carpenter, Baldwin 24-2tc

U. S. Savings Stamps — sold at part of the nationwide Savings children to save for bonds with all post offices — are an important Bonds Program. Encourage your Savings Stamps.



workpower

TRUCKS FOR '65!

More models, more engines, more Chevy workpower!

The long strong line of Chevy trucks for '65 is rolling in with miles of new working equipment. Like that handsome Fleetside pickup that leads the pack... one of the 18 pickup models in the line this year.

Further along, you'll find economical Chevy-Vans, a wide selection of walk-in vans, a bigger choice of big trucks, more job-tailored components—trucks built to fit your business and budget. And under those hoods you'll find

the best in 4- and 6-cylinder, V8 and diesel power, 18 tough truck engines in all including 4 new lower cost diesels. Here's the huskiest bunch of haulers that ever came looking for work!

Our word for all this is *workpower*. That's the stuff that makes a truck a real truck. A hard-nosed money-saver. Yes, workpower's here and Chevy's got it, in such a variety of types and sizes that picking the best truck for your job will be easier than it's ever been before. If you're in the market, just get in touch with your dealer.

Telephone your Chevrolet dealer about any type of truck

BILLINGSLEY CHEVROLET CO.

Phone 728-4462

Booneville, Miss.

ANNIVERSARY SPECIAL!

1 - 250 gal. TANK

1 - 5 rad. HEATER

1 - 3 rad. HEATER

Completely Installed For \$99.00

Return Coupon

NAME _____
ADDRESS _____
COMMUNITY _____ PHONE NO. _____
PLEASE HAVE YOUR SALESMAN CONTACT ME WITH THE UNDERSTANDING THAT THERE IS NO OBLIGATION ON MY PART.

ROGERS LP-GAS CO.

"SERVICE IS THE DIFFERENCE"
BOONEVILLE
W. D. KERNELL, Manager



add a lot to living

A phone in your kitchen works hard where you work hardest! It's on the spot for making calls, taking calls, saving steps and time. All that adds up to a lot of easier living for you! Call your telephone business office or ask any telephone serviceman for details on pretty colors and the very modest price.

Southern Bell
Part of the Nationwide Bell System



MARIETTA BEAUTIES—Winners at the Marietta High School beauty revue held Friday night are shown, left to right, Judy Farrar, first alternate; Voncell Floyd, second alternate; Queen, Janice Holley; Shirley Short, third alternate; and Brenda Moreland, fourth alternate.

THE NEWS FROM— MARIETTA

By MRS. J. A. GILMORE

There will be preaching at the Marietta Methodist Church Sunday morning at 9:30 by the pastor, Bro. Whiteside of Baldwin. Everyone is welcome.

Mr. and Mrs. B. B. Gilmore of Columbus, Miss., were the weekend guests of Mrs. J. A. Gilmore.

Those attending the 85th birthday dinner of Mr. D. W. Gann on September 9 were: Rev. and Mrs. C. A. Benjamin of Iuka, Mr. and Mrs. Alvin Glenn, Mr. and Mrs. D. O. Fowler, Mr. and Mrs. Ira Gann and Mrs. J. A. Gilmore.

Mrs. Jim Parks is visiting Mrs. Almus and Kenneth Parks in Lepanto, Ark., this week.

Miss Judy Pharr and Miss Sarah Farrar were weekend guests of Mr. and Mrs. Bill Helton and children in Sheffield, Ala., last week.

Jumpertown RCDC To Meet Monday Night

The Jumpertown RCDC will have its regular meeting on Monday night, September 21, at 7:30 in the school cafeteria. A nice program on soil conservation has been planned.

Reports are also being requested from the various committees and project leaders. The Fall Festival will be discussed and all members of the committee are especially urged to be present. They are Mrs.

Vida English, Chairman, Mrs. Jesse Sparks, Mrs. J. E. Sims, Gerald Michael, Mrs. D. T. Brooks, and Mrs. John Eaton.

All patrons of the school and members of the RCDC are urged to come out and help in the meeting, and the sponsors, the Civitans, have a very special invitation. Refreshments will be served.

ON THE LOCAL SCENE

Mrs. Clovis Rogers attended an all day workshop of Delta Kappa Gamma Saturday at the Robert E. Lee Hotel in Jackson.

Guests of Mr. and Mrs. Victor Fugitt Saturday were Mrs. Ruth Blackburn and son, Joe, of Memphis, and Dr. Jack Blackburn of Jackson, Miss.

Mr. and Mrs. William Arnold and Mr. and Mrs. Clyde Jones spent the weekend in Memphis.

Mr. and Mrs. R. J. (Piggy) Bonds, Carla and Mrs. Nellie Bonds spent the weekend in Hot Springs, Ark.

Mr. and Mrs. Bill White visited Mrs. Larry Conway and children in Memphis Wednesday and Thursday.

Mrs. Lester Crow and Mrs. Alma Crow accompanied Miss Diane Crow to Delta State College Monday. They stopped in Cleveland on their way home and visited with relatives.

Mr. and Mrs. Earl Sappington spent Saturday through Tuesday at Houston, Miss., with Dr. and Mrs. Millard Sappington.



Thou hast blessed the work of his hands.—(Job 1:10).

The Spirit of God enables our hands to be capable, sure and efficient when they are directed to performing good and humane deeds in His image.

presented in payment for a Savings Bond. Post Offices do not issue Savings Bonds but will redeem stamps for cash. The stamps should not be presented loose, but affixed in an album.

Question: I understand that Savings Bonds cannot be pledged as collateral, but can they be used as security for performance of an obligation?

Answer: No; and for the very same reason. Savings Bonds can be cashed only by the person in whose name they are registered (except, of course, in isolated cases of guardians or custodians legally authorized to act for the bond owner.) This is another built-in safety feature for owners of bonds.

Q and A YOUR SAVINGS BOND QUIZ

Question: I have a rather large number of Series "E" bonds that I purchased in 1953 and 1954. When will these bonds mature and what is the interest rate? I think it was 3 per cent to begin with.

Answer: In all probability, your bonds have passed their first maturity date and now are in the 10-year extension period which they were accorded. Bonds issued at that time had an original maturity period of nine years and eight months. The interest rate on your bonds was increased effective June 1, 1959, for their remaining period to maturity, and in the extension period they are drawing 3 1/2 per cent, compounded semi-annually.

Question: My son will have enough Savings Stamps to buy a bond in a few weeks. Where do we turn them in for a bond?

Answer: Any bond issuing agent (bank) will accept Savings Stamps



MR. AND MRS. OSCAR BEARDEN will celebrate their fiftieth wedding anniversary on September 18. They have lived all of their lives in Prentiss County. They have three daughters, eight grandchildren and two great-grandchildren.



THRASHER BETA CLUB MEMBERS are, seated, Norma Lambert and Larry Furtick; standing, front row, Leta Smith, Patsy Parker, Sandra Stutts, Peggy Coley, Evelyn McGaughy, Mavis Stevens, Peggy McVey and Mr. E. N. Hamblin, Sponsor. Standing, back row, Mrs. Ruth Clausel, Sponsor, Steve Goldman, Doug Holland and Mary Hatley. Larry Furtick is president; Norma Lambert, Vice-President; Evelyn McGaughy, Secretary; Peggy Coley, Treasurer, and Patsy Parker, Reporter.



SAVE 60¢

THE SHAVING TEAM THAT CAN'T BE BEAT

PERSONNA—finest in stainless steel blades. REGULAR VALUE \$1.58
BURMA SHAVE—richest in lather—soaks rings around all others. ONLY 98¢

KUHN'S

KEMP'S Super Market



LOWER PRICES - Plus United Stamps For FREE GIFTS

T-Bone Steak	U. S. Choice	lb. 99c
Ground Beef		3 LBS \$1.00
PORK CHOPS	End Cuts	lb. 49c
CANNED HAM	Armour	5 lbs. \$3.99
FRANKS	Wilson	lb. 49c

Carrots	2 pkgs. 25¢	Sweet Potatoes, lb. 10¢
Apples, lb.	25¢	Cantaloupes 3 for \$1.00

Cheese Food	Piedmont Farm	2 LBS 55c
--------------------	---------------	------------------

Spiced Peaches	Rose-Dale	No. 2 1/2 Size 29c
-----------------------	-----------	---------------------------

Peaches	Hunt's	No. 2 1/2 Size 25c
----------------	--------	---------------------------

Cake Mix	Swans Down	box 25c
-----------------	------------	----------------

TURNOVERS	Raspberry or Apple	pkg. of 4 51c
------------------	--------------------	----------------------

PIES	Apple, Peach, Cherry	3 FOR \$1.00
-------------	----------------------	---------------------

KLEENEX TOWELS		2 rolls 59c
-----------------------	--	--------------------

SHORTENING	Richtex	3 LBS 39c
-------------------	---------	------------------

JOB-PRINTING



PROFESSIONAL
PRESSWORK
PRACTICAL
PRICES

Whatever your printing needs, you'll find us ready, willing and able to fill them to perfection. NO JOB TOO LARGE OR TOO SMALL.

OFFICE SUPPLIES

Duplicate Receipt Books
File Folders
Mimeograph Stencils
Typewriter Ribbons
All Sizes Envelopes
Adding Machine Tape
Duplicating Ink
Duplicating Fluid
Pencil Sharpeners
Carbon Paper
Cellophane Tape
Kraft Tape
Scale Books

Sales Books
Magic Markers
Poster Paper
Bills of Sale
Legal Notes
Stamp Pads and Ink
Index Cards
Ledger Sheets
Staplers
Staples
Pencils
Shipping Tags

The Banner-Independent

Thrasher FBLA Opens New Chapter Room

On Wednesday afternoon, Sept. 9, the Thrasher Chapter of the FBLA held open house for their new chapter room. The members have renovated the old history and dressing room located in the upper part of the gymnasium. The room is refinished in blue and grey, new shades and drapes hung, floors re-done and new seats installed. One end of the room is set up for visual aids and chapter meetings. The other end is for lounging and storing.

All school employees and chapter members were invited to the open house and tea. Sandra Stutts,

Rita Smith, Barbara Crowe, and Martha Harris welcomed the guests and served tea, mints and chips, from a table covered in pink and white. A large floral centerpiece of blue surrounded by gold candles symbolized the club colors.

Doug Holland, vice president, assisted Lucy Jones, program chairman, in directing several games.

Barbara Crowe, president, welcomed the guests and invited them back to use the visual aids.

Maylene Dees, Reporter

Mrs. Reba Davis Participates In Summer Institute

Mrs. Reba Holley Davis, Route 3, Rienzi, has been a participant in the National Science Foundation Graduate School Summer Institute for High School Teachers of Science and Mathematics held on the campus of the University of Mississippi from June 10 to August 21.

Mrs. Davis teaches in the Corinth High School.

DIXIE DANDY

Delivery Service — Cash Only — Phone PA 8-4435

Highway 45 North

Booneville, Miss.

Welcome The Late Shoppers

Open Until 9:00 p. m.



AMERICA'S MOST VALUABLE STAMPS

TRY OUR MEATS — HENRY WINTERS, BUTCHER

BACON	NuKris	lb. 39c
ROUND STEAK	Choice	lb. 69c
CHICKEN LIVERS		lb. 59c
PICNIC HAMS		lb. 35c
BOLOGNA	Southern Belle All Meat	lb. 35c

Nothing Else To Buy To Take Advantage Of These Prices

Sugar	5 lbs. 49c;	10 lbs. 99c
--------------	-------------	-------------

Chili	Kelly's With Beans 93c;	Without Beans 99c
--------------	-------------------------	-------------------

PEACH HALVES	Hunt's	4 cans 98c
---------------------	--------	-------------------

PARKAY Margarine		4 lbs. \$1.00
-------------------------	--	----------------------

EGGS	Freshlaid Grade A Small	3 Doz. 89c
-------------	-------------------------	-------------------

Lemons, Fresh Sunkist, dozen		35c
-------------------------------------	--	------------

Cubed Beef Steaks, Randy's		10 for 98c
-----------------------------------	--	-------------------

DOG FOOD, Twin Pet		6 cans 49c
---------------------------	--	-------------------

MAYONNAISE, Kraft, quart		49c
---------------------------------	--	------------

Emergency Rooms At Many Hospitals Are Often Misused

The rapidly expanding use of hospital emergency rooms by the general public, along with decreasing availability of personnel to staff these departments, has given rise in recent years to misunderstanding in many of our communities as to the purpose of this service, says Paul J. Pryor, Administrator, Mississippi Baptist Hospital, Jackson and President of the Mississippi Hospital Association.

In half a generation, the old concept of a hospital "accident room" largely for injured persons, has developed into an emergency DEPARTMENT regarded by the community as a medical center for all types of care. The number of emergency admissions has jumped 500 per cent since World War II, the Association president continued, although the number of accident patients—formerly the bulk of all emergency room cases—has remained stable.

This has come about largely because the emergency room of our hospitals are often misused by persons who consider them outpatient clinics or a substitute for a family physician. Headaches, sore throats, colds, runny noses—all of these appear frequently on emergency room charts. And all are symptoms which properly should

One billion dollars are spent annually by Americans on food fads, frauds, and unnecessary "health" products, says Dr. Philip L. White, American Medical Association.

be seen by the person's private physician in his office or clinic. Hospitals are not legally authorized to administer any treatment except by order of a physician. Moreover, these improper uses of the emergency room contribute to overloading this department and reduce its efficiency for treating those in need of immediate attention for serious emergencies. Real emergencies constitute such cases as children injured at play, poisonings, casualties of automobile wrecks and home accidents, victims of gunshot wounds, knifings and dog bites, potential suicides, burn cases and mental cases, and those with heart attacks and severe physical disorders.

Although hospitals maintain equipment and treatment facilities, they are not licensed to "practice medicine." It is recommended that when at all possible, the family physician be notified of an emergency. He can then arrange to meet the patient or give orders to be

carried out by the nursing personnel on duty. Most important, he knows the medical history of the individual and is aware of any physical defects, allergies or reactions to certain drugs. If there is no family physician or the family physician cannot be contacted, and there is no intern or resident program at the hospital, emergency medical services are provided by private physicians who are members of the medical staff of the hospital. These physicians serve voluntarily on a rotating "on call" basis.

Every effort is made to give prompt treatment to all persons coming to the emergency room. However, the first responsibility of an emergency room is to render immediate care to URGENT illnesses or injuries. This may sometimes mean a short wait for those

in less need.

Efficient care and attention for the emergency patient is one of the most important services per-

formed by your hospital. The Mississippi Hospital Association points out that it can perform this function more effectively if you will first notify both the hospital and your family physician whenever possible of your need for emergency service—BEFORE you go to the hospital.



MR. AND MRS. RICHARD WOLD

Miss Lanette Murphy And Richard Wold Are Married In Candlelight Ceremony

The beautiful warm balmy evening of August 29th was the setting for a lovely candlelight wedding uniting Miss Lanette Murphy of 2710 Navaho, Waukegan, Illinois, and Richard Wold of Kenosha, Wisconsin.

The bride's brother and sister-in-law, Mr. and Mrs. Arnold Murphy of Booneville, were the honor attendants.

The 8:30 p.m. double ring service took place at the First Missionary Baptist Church in Zion, Illinois, the Rev. Aubert Rose, Jr., also of Zion, officiated at the service. The bride's hand in marriage was given by her father, Cliff Murphy of McKenzie, Tennessee.

The attendants were Mr. and Mrs. Gerald Longley of Waukegan, Ill., Mr. Frank Thomas of Gurnee, Ill., Michael LaDuke of Waukegan, Ill., Miss Patricia Murphy, sister to the bride, Bradley Pavelski, both of Waukegan, Ill., and Miss Cathi Murphy, sister to the bride and Stephen Craft, were the junior attendants.

Miss Sharon Leigh Murphy was the miniature bride attired in an exact duplicate of Miss Murphy's gown, complete with a miniature

bridal bouquet. The bride created a vision of loveliness in her Alfred Angelo original, floor length gown of billowing imported satin and Chantilly lace. The crown holding her illusion veil was of seed pearls and orange blossoms. Her beautiful bouquet fell in a cascade of yellow roses and white stephanotis.

Her attendants created a colorful rainbow of pink, green, aqua, yellow, and blue in their bell-shaped floor length dresses. All carried a colonial bouquet with tipped carnations to match their dresses except Theda Murphy, the matron of honor, who carried a rainbow of colors.

Friends and relatives greeted the couple in the church parlor for a buffet supper. They are now making their home in Booneville.

A SPECIAL MESSAGE TO PARENTS: A thrifty child makes a wealthy man, the old proverb says. Start your boys and girls on the road to good fortune—encourage them to buy U. S. Savings Stamps at the post office or at school.



Mr. and Mrs. J. M. Cox have been married for 65 years and Sunday, September 13, was the first time all of the children have been together in 35 years. They ate lunch with Mr. and Mrs. T. L. Parker. Those attending the reunion Sunday were: Mr. and Mrs. T. L. Parker of Booneville, Mr. and Mrs. Charley Gilley, Dickie and Wanda, Mr. and Mrs. Percie Brewer of Zion, Ill., Sandra and Linda Brewer of Booneville, Maxine Cranston of Pleasant Hill, Calif., Howard Cox of San Francisco, Calif., Roy Cox of San Mateo, Calif., Hyte Cox of El Dorado, Ark., Earl Pierce of Fordyce, Ark., and Mr. and Mrs. Renard Cox of Memphis. Those pictured above are the children: Seated from left to right: Lucille Parker, Maxine Cranston, J. M. Cox, Mrs. J. M. Cox, and Lillian Brewer. Standing, left to right: Renard Cox, Jimmy Cox, Earl Pierce, Howard Cox, Roy Cox, and Hyte Cox.

PRINCE GARDNER



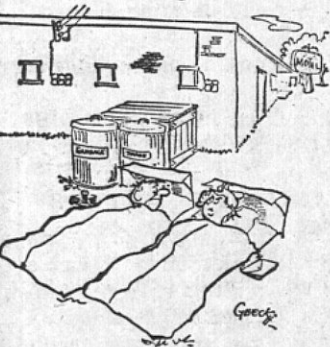
Banker Billfold

Pocket on either side of billfold for credit cards, photos, etc. 2-4 place removable see-through windows for cards, photos, etc. Rondo silk lining and bill divider banded with leather. Duplicate key slots. Extra pockets for stamps, tickets, etc., on both sides of billfold.

Genuine Imported Morocco \$7.50
Others from \$5.00 All plus tax

DUCKWORTH Rexall Drugs

My Neighbors



"Next year we'll plan ahead to phone ahead, OK?"

The Guild Corner



FIRST METHODIST CHURCH

The following officers welcome you and urge you to be present Monday, Sept. 21, for the regular Guild meeting at 7 p.m.:

Miss Mary Hobson, President
Mrs. June Green, 1st V. Pres.
Mrs. Louise Peeler, 2nd V. Pres.
Mrs. Dora Moore, Secretary
Mrs. Mae Smith, Treasurer
Mrs. Thelma Rogers, Promotion Sec.



GO

DEALS

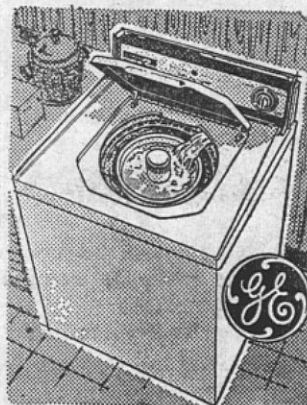
NEW! 14

UP TO 14 POUND CAPACITY

AUTOMATIC FILTER-FLO WASHER

Plus...
Water saver load selection
• Two wash cycles
• Two wash temperatures
• Spray rinse
• Unbalance load control.

\$199.95 w/trade
\$2.50
WEEKLY



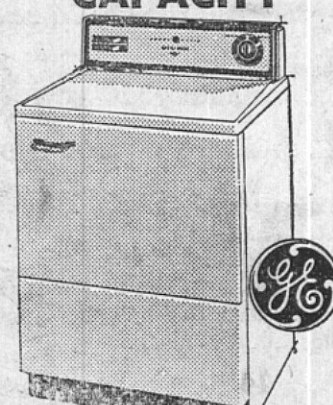
GENERAL ELECTRIC HIGH-SPEED

DRYER

High Speed Drying System • Variable Time Dry Control • Fluff Cycle, and Safety Start Switch.

\$149.95
\$2.00
WEEKLY

UP TO 14 POUND CAPACITY



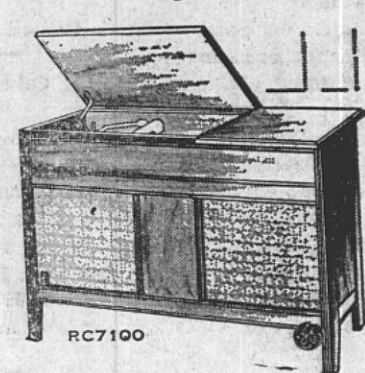
GREAT STEREO SOUND and STYLING

AT SUCH A...

LOW PRICE!

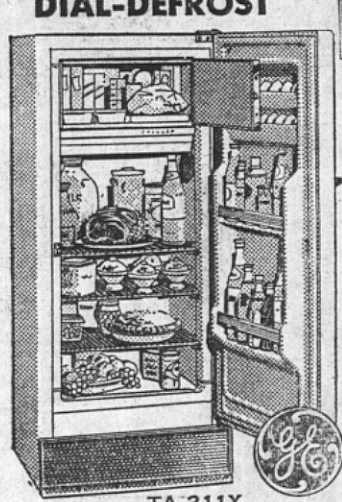
Traditional Mahogany, Danish Modern Walnut or Early American Maple • Dual channel stereo amplifier • 4-speed automatic changer • diamond stylus • Four-speaker system • AM/FM/PM Stereo tuner with Stereo Star (Optional).

the Kingsport



\$149.95
\$2.00
WEEKLY

10 cu. ft. DIAL-DEFROST



GENERAL ELECTRIC REFRIGERATOR

WITH FAMOUS STRAIGHT LINE DESIGN

• Full-width Freezer Chest
• 2 Flex-grid Ice Trays
• Chiller Tray
• Adjustable Door Shelf
• 2 Egg Shelves
• Protective Door Stops

LOW PRICE!
\$159.95 w/trade
\$2.00
WEEKLY

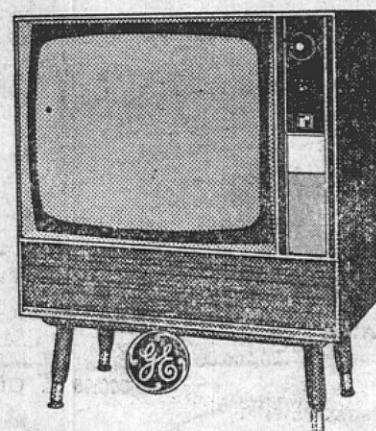
23" CONSOLE TV! FAMOUS G-E

"DAYLIGHT BLUE" TV!

Plus...

Front controls for picture and sound • Slim silhouette styling • New G-E "Sealed Beam" picture tube • Rich, clear sound with a 4" Dynapower speaker.

\$199.95 with trade
\$2.50
WEEKLY



23" dia. tube—282 sq. in. picture M721AEB



LP Albums

Stereo! **99¢** Ea.
World famous music by top artists! 12" records of outstanding quality. One low price!



TIRE DEAL No. 3



TIRE DEAL No. 4



TIRE DEAL No. 5



TIRE DEAL No. 6



TIRE DEAL No. 7



TIRE DEAL No. 8

Watch For Our Grand Opening Sale

BUDGET TERMS - UP TO 36 MONTHS TO PAY

- AS LOW AS \$1.25 WEEKLY - FREE PARKING -



GOODYEAR SERVICE STORE

Booneville

Hy. 45 North

Hours 8 a.m. - 6 p.m.

Phone 728-6276

COUNTY AGENT NOTES

By W. TAYLOR SMITH, County Agent

AREA FEEDER PIG SALE

The next area feeder pig sale will be held Thursday, October 15. If you have pigs to consign to this sale, let us know by Sept. 20.

COTTON NOTES

What material are you going to use in defoliating your cotton? Calcium cyanamide is still an excellent material to use on mature cotton, however, moisture is required to activate this material.

Chlorate materials also do a good job on mature cotton. Under drought stress conditions, there is some indication that chlorates are better than some other materials. On succulent, green cotton and second growth the organophosphorus compounds like Def and Folex do an excellent job.

Remember, good coverage is a must for good defoliation. Be sure to follow manufacturer's recommendations for rates and timing of applications.

Defoliation can help you keep higher quality in your cotton as it reduces green stain and trash.

DAIRY MANAGEMENT

Do you have a good year-round forage program? Oats and ryegrass will give good winter and early spring grazing. Permanent pastures interplanted with legumes will give good spring grazing and sudan and millet will provide summer grazing. Often the most critical grass is in late summer and early fall.

Until your fall pastures are ready, provide fresh cows with good quality hay or silage. This is particularly important in early fall while weather is still hot and the cows do not go out to graze as they do in cooler weather.

When fresh cows drop off in production, they are hard to check and get back into full milk flow. A little extra grain will help hold the milk peak in early months of

PASTURES

Did your pastures fail you this year? If so, there is a reason! Here are some of the possible reasons: No lime and fertilizer; not enough land in pasture; poor management; more weeds than grass and clover; only one pasture area where there should be three or four so that cows can be changed around often.

Correct these problems and the pastures will really pick up! First lime and fertilize. Then control overgrazing and weeds. Have each season's grazing outlined and when the season is over move to the next season's grazing area.

It is time now to fertilize clover areas. All clovers need lime, phosphate and potash. These can be topdressed, and it should be done before the new clover germinates. For high production of clover, apply 100 pounds per acre of phosphate and 100 pounds of potash. For average production, apply 80 lbs. of each plant food.

For broomsedge areas, use one ton of lime, plow the area and plant small grain. At planting time use at least 500 pounds per acre of high analysis fertilizer, then more nitrogen in the fall if needed and in the spring.

Make Your Fall and Winter Feeding Program Work

Take an inventory now of your hay, silage, pasture, fall and winter grazing and determine the kind and amount of protein feed or feed supplements you will need. Protein supplement, molasses Sweetfeed blocks, Range Cubes, Protein blocks, etc., help make your roughage go further and gives you great return on your feed dollars invested. See your feed dealer and County Agent for assistance.

PRENTISS COUNTY GENERAL FUND

BUDGET OF ESTIMATED RECEIPTS AND DISBURSEMENTS For Fiscal Year Ending September 30, 1965

ESTIMATED DISBURSEMENTS

1. OFFICE AND ADMINISTRATION	
(1) Salaries & Per Diem of Officials & Deputies:	
a. Members of Board of Supervisors	\$ 8,000.05
b. Attorney for Board	1,800.00
c. Clerk of Board	1,050.00
d. County Auditor and Treasurer	3,025.00
e. County Registrar	1,350.00
f. Tax Assessor and Deputies	5,250.00
g. Clerk's Per Diem - Board Meetings	510.00
h. Sheriff's Per Diem - Board Meetings	340.00
i. Sundry	55.00
Total	21,380.05

(2) General Office Supplies & Expenses:

a. Stationery & Other Office Supplies	2,837.79
b. Record Books, Binders, Printed Forms	4,796.69
c. Postage, Telephone Service	3,062.03
d. Repair of Office Equipment	277.50
e. Replacement of Office Equipment	418.00
f. Premium on Surety Bonds	1,308.75
g. Sundry	56.25
Total	12,758.01

(3) Other Office & Administrative Expenses:

a. Legal Advertising and Publishing	1,880.13
b. Special Legal Service	
c. State Audit Service	495.00
d. Elections	8,582.96
e. Copying Tax Rolls	1,440.24
f. Allowances Servicing Homestead Exemptions: Clerk	3,248.75
Tax Assessor	1,456.80
Sheriff	1,041.25
g. Social Security (County's Share)	1,845.72
h. State Retirement (County's Share)	1,110.85
Listing Poll Tax & Land Roll Index (Sheriff)	302.55
i. Sundry (Per Account Classification)	107.40
Total	21,511.65

Total Budgeted Disbursements for Office & Administration \$55,649.71

2. JUDICIAL, LUNACY, AND IMPRISONMENT COSTS

(1) Courts:	
a. Chancery	1,865.25
b. Circuit	9,526.98
c. County	
d. J. P. & Other Law Enforcement Agencies	7,082.92
Total	18,475.15

(2) Lunacy Cases:

Fees, Allowances, Transportation	1,491.40
----------------------------------	----------

(3) Imprisonment Costs:

Food, Clothing, Medical Care & Other	4,509.36
--------------------------------------	----------

Total Budgeted Disbursements for Courts, Lunacy, Imprisonment 24,475.91

3. HEALTH AND SANITATION

a. Personal Service	
b. General Expense and Supplies	
c. Vital Statistics	538.40
d. Support of Health Unit	12,127.63
e. Other Health Service	
Total	12,666.03

Total Budgeted Disbursements for Health & Sanitation \$12,666.03

4. CHARITIES AND PUBLIC WELFARE

a. Support of Paupers	
b. Contribution to Charity Hospitals	11,665.22
c. Contribution to T. B. Patients	1,777.50
d. Pro rata of Dept. of Welfare Expense	3,592.90
e. All Other	
Total	17,035.62

Total Budgeted Disbursements for Charities & Public Welfare 17,035.62

5. FARM AND HOME SERVICE

a. Salary	6,990.00
b. General Expenses	247.40
c. Appropriation for Fairs, L. S. Shows & 4-H Club	1,400.00
d. Advertising Resources	
e. Other F. & H. Service Costs	
Total Budgeted Disbursements for Farm & Home Service	8,637.40

6. MAINTENANCE & OPERATION OF PUBLIC BLDGS.

a. Salaries-Janitors & Other	1,320.00
b. Janitorial Supplies	1,167.67
c. Heat, Light, Water	2,243.38

d. Insurance	173.30
e. Repairs and Replacements	1,404.67
f. Sundry	15.00

Total Budgeted Disbursements for Maint. & Opr. of Bldgs. 6,324.08

7. LIBRARY AND OTHER PUBLIC SERVICE

a. Appropriation for Support of Library	10,243.03
b. Appropriation for Civic and Patriotic Organizations	150.00
c. All Other Public Service, Veterans Serv. Officer	3,250.00
Sundry	650.43

Total Budgeted Disbursements for Library, etc. 14,293.46

8. NON-OPERATING DISBURSEMENTS & CAPITAL OUTLAY

a. Debt Retirement	
b. Construction Projects & Permanent Improvements	
c.	

Total Budgeted Disbursements for Capital Outlay, etc.

TOTAL YEAR BUDGETED DISBURSEMENTS FROM GENERAL FUND FOR ALL PURPOSES \$139,082.21

3. General Fund.

ESTIMATED GENERAL FUND RECEIPTS

1. LOCAL SOURCES: Property Tax	\$84,633.24
a. Dealers Privilege License	735.27
b. Mineral Lease Tax	
c. Fines and Forfeits	17,177.50
d. Interest on Deferred Tax Payments	37.95
e. Other Local Source (Refund by Fred Houston)	900.00
Sundry	136.69

Total Est. Receipts from Local Sources 103,620.65

2. STATE AND OTHER OUTSIDE SOURCES:

a. Severance Tax (Oil, Timber & Gas)	
b. Homestead Exemption Reimbursement	27,131.51
c. TVA Lieu Tax	2,589.85
d. Other Outside Aid	

Total Estimated Receipts from Outside Sources 29,721.36

Total Estimated Receipts from All Sources 133,342.01

Add Unencumbered Cash Balance from Previous Year 14,961.28

Total (Unencumbered Cash Plus Total Estimated Receipts) \$

AMOUNT NECESSARY TO BE RAISED BY TAX LEVY TO FINANCE THE OPERATION OF THE GENERAL FUND

TOTAL CASH & ESTIMATED RECEIPTS FROM ALL SOURCES \$

*This amount should equal the amount representing the total of est. disbursements.

PRENTISS COUNTY BOND AND INTEREST SINKING FUNDS

BUDGET OF ESTIMATED RECEIPTS AND DISBURSEMENTS For Fiscal Year Ending September 30, 1965

DISBURSEMENTS

BOND MATURITIES

1. County-wide Obligation Bonds—All Issues	\$ 53,000.00
2. County Road Dist. Obligation Bonds—All Issues	45,000.00
3. County School Dist. Obligation Bonds—All Issues	35,000.00
4. All Other Bond Maturities	89,000.00
Total Bond Maturities	\$222,000.00

INTEREST ON

1. County-wide Bonds	32,000.00
2. County Road District Bonds	16,000.00
3. County School District Bonds	6,500.00
4. All Other Bonds (Industrial Bonds)	71,000.00
Total Interest	125,500.00

SERVICE CHARGE (COLLECTION EXPENSES) 500.00

TOTAL OF BONDS & INT. MATURING DURING YR. \$348,000.00

ESTIMATED RECEIPTS & OTHER INCOME

SOURCE AND KIND

1. Local Sources:	
a. Int. on Bonds Owned by Funds (Prop. Tax)	\$183,973.13
b. Int. on Loans Due by Other Funds	
c. Other Local Sources	110,000.00
Total	\$ 293,973.13

2. State and Other Outside Sources:

a. Gasoline Excise Tax	44,950.00
b. Truck & Bus Privilege Tax	8,125.00
c. Severance Taxes (Oil, Timber & Gas)	951.87
d. Other Counties' Share of Line School Bonded Debt	

Total 54,026.87

3. Income from Sales of Bonds Owned and/or Collection of Loans

Total Estimated Receipts and/or Other Income Except Taxation

Add Cash Balances in All Funds Combined from Preceding Year

Total of Cash Balances & Estimated Receipts & Other Income

Amount Necessary to be Raised by Tax Levies for

(1) Maturities of County-wide Bonds & Interest 85,000.00

(2) Maturities of Road Dist. Bonds & Interest 61,000.00

(3) Maturities of School Dist. Bonds & Interest 41,000.00

(4) Maturities of All Other Bonds & Interest 160,000.00

Total \$48,000.00

Total Cash & Estimated Income from All Sources \$348,000.00

PRENTISS COUNTY ROAD AND BRIDGE FUNDS

BUDGET OF ESTIMATED RECEIPTS & DISBURSEMENTS For Fiscal Year Ending September 30, 1965

FIRST DISTRICT ROAD FUND

ESTIMATED DISBURSEMENTS

1. MAINTENANCE COSTS	
a. Supervision (Supervisors, Engineer)	\$ 1,600.00
b. Salary and Wage (Road Employees)	13,585.39
c. Maintenance Materials & Supplies	13,241.52
d. Petroleum Products (Gasoline, Oil)	11,094.80
e. Machinery Repair, Upkeep & Rental	17,632.23
f. Other Operating Costs, Including County's Share of State Retirement & Social Security	1,363.53

Total Budgeted Disbursements for Purposes of Maintaining Roads and Bridges \$ 58,517.53

2. CAPITAL OUTLAY

a. Construction Projects (Other Than State Aid)	
b. Purchases of Road Machinery & Equip.	20,000.00
c. Debt Retirement	
d. Other Non-Operating & Capital Outlay Disbursements	

Total Budgeted Disbursements for Capital Outlay 20,000.00

TOTAL YEAR BUDGETED DISBURSEMENTS FROM FIRST DISTRICT ROAD FUND \$ 78,517.53

ESTIMATED RECEIPTS

1. Local Sources: Property Tax	\$ 5,503.50
a. Auto Road & Bridge Privilege Tax	10,040.72
b. All Other Local Sources	20,251.74

Total Estimated Receipts from Local Sources \$ 35,795.96

2. State and Other Outside Sources:

a. Gasoline Excise Tax	32,735.09
b. Truck & Bus Privilege Tax	6,171.51
c. Severance Tax (Oil, Timber & Gas)	
d. Homestead Exemp. Reimbursement	3,814.97
e. Other Receipts from Outside Sources	42,721.57

Total Estimated Receipts from State & Other 78,517.53

Total Estimated Receipts from All Sources \$ 78,517.53

*This amount should equal the amount representing the total of est. disbursements.

PRENTISS COUNTY ROAD AND BRIDGE FUNDS

BUDGET OF ESTIMATED RECEIPTS AND DISBURSEMENTS For Fiscal Year Ending September 30, 1965

SECOND DISTRICT ROAD FUND

ESTIMATED DISBURSEMENTS

1. MAINTENANCE COSTS	
a. Supervision (Supervisors, Engineer)	\$ 4,000.00
b. Salary and Wage (Road Employees)	14,638.85
c. Maintenance Materials & Supplies	11,947.17
d. Petroleum Products (Gasoline, Oil)	14,070.78
e. Machinery Repair, Upkeep & Rental	13,922.28
f. Other Operating Costs, Including County's Share of State Retirement & Social Security	902.19

Total Budgeted Disbursements for Purposes of Maintaining Roads and Bridges \$ 59,477.87

2. CAPITAL OUTLAY

a. Construction Projects (Other Than State Aid)	
b. Purchases of Road Machinery & Equip.	15,000.00
c. Debt Retirement	
d. Other Non-Operating & Capital Outlay Disbursements	

Total Budgeted Disbursements for Capital Outlay 15,000.00

TOTAL YEAR BUDGETED DISBURSEMENTS FROM SECOND DISTRICT ROAD FUND \$ 74,477.87

ESTIMATED RECEIPTS

1. Local Sources: Property Tax	5,503.53
a. Auto Road & Bridge Privilege Tax	10,040.74
b. All Other Local Sources	16,212.00

Total Estimated Receipts from Local Sources \$ 31,756.27

2. State and Other Outside Sources:

a. Gasoline Excise Tax	32,735.09
b. Truck & Bus Privilege Tax	6,171.53
c. Severance Tax (Oil, Timber & Gas)	
d. Homestead Exemp. Reimbursement	3,814.98
e. Other Receipts from Outside Sources	42,721.60

Total Estimated Receipts from State & Other 74,477.87

Total Estimated Receipts from All Sources \$ 74,477.87

*This amount should equal the amount representing the total of est. disbursements.

PRENTISS COUNTY ROAD AND BRIDGE FUNDS

BUDGET OF ESTIMATED RECEIPTS AND DISBURSEMENTS For Fiscal Year Ending September 30, 1965

THIRD DISTRICT ROAD FUND

ESTIMATED DISBURSEMENTS

1. MAINTENANCE COSTS	
a. Supervision (Supervisors, Engineer)	\$ 2,600.00
b. Salary and Wage (Road Employees)	13,742.50
c. Maintenance Materials & Supplies	12,211.71
d. Petroleum Products (Gasoline, Oil)	10,597.72
e. Machinery Repair, Upkeep & Rental	17,373.30
f. Other Operating Costs, Including County's Share of State Retirement & Social Security	1,794.71

Total Budgeted Disbursements for Purposes of Maintaining Roads and Bridges \$ 58,319.94

2. CAPITAL OUTLAY

a. Construction Projects (Other Than State Aid)	
b. Purchases of Road Mach. & Equip.	15,000.00
c. Debt Retirement	
d. Other Non-Operating & Capital Outlay Disbursements	

Total Budgeted Disbursements for Capital Outlay 15,000.00

TOTAL YEAR BUDGETED DISBURSEMENTS FROM THIRD DISTRICT ROAD FUND \$ 73,319.94

ESTIMATED RECEIPTS

1. Local Source: Property Tax	5,503.57
a. Auto Road & Bridge Privilege Tax	10,040.73
b. All Other Local Sources	15,054.00

Total Estimated Receipts from Local Sources \$ 30,598.30

2. State and Other Outside Sources:

a. Gasoline Excise Tax	32,735.10
b. Truck & Bus Privilege Tax	6,171.55
c. Severance Tax (Oil, Timber & Gas)	
d. Homestead Exemp. Reimbursement	3,814.99
e. Other Receipts from Outside Sources	42,721.64

Total Estimated Receipts from State & Other 73,319.94



MR. AND MRS. DALTON GUY GARNER

Miss Connie Sue Young And Mr. Dalton Guy Garner Are United In Marriage In Lovely Ceremony At First Methodist Church Sunday

In one of the area's most impressive weddings, Miss Connie Sue Young became the bride of Mr. Dalton Guy Garner on Sunday afternoon, the thirteenth of September at two-thirty o'clock at the First Methodist Church in Booneville.

The Reverend W. L. Wallace, Jr., pastor of the church, assisted by the Reverend Huey Wood, performed the double-ring ceremony before a large assembly of relatives and friends.

The bride is the daughter of Mr.

served with pewholders interspersed with sprays of gladioli, loops of ribbon with a single lighted candle at the end of the pews.

Nuptial music was presented by Mrs. Mary Gault Nabers, organist, attired in blue figured whipped cream costume, and Mrs. Jack Du-bard, soloist, wearing a tucked beige cotton. Both wore lovely white carnation corsages. Mrs. Du-bard sang, "Because," and "The Wedding Prayer." Mrs. Nabers played, "Whither Thou Goest," "The Wedding March" and other traditional music. During the ceremony she softly played, "To A Wild Rose."

Given in marriage by her father, the bride was a vision of loveliness. She was exquisitely gowned in an original by Miss Betsy of pure white bridal taffeta fashioned with a scoop neckline and long petal point sleeves. The fitted bodice was appliqued with beautiful motifs of Alencon lace. The long skirt had fullness at either side, sweeping out into the wide chapel length train. Her three tiered waist length veil of imported French illusion fell from a crown of lace and pearls. Her slippers were of matching white peau de soie. A single strand of pearls was her only ornament. The bridal bouquet was a distinctive creation of a pure white orchid with fleur d'Amour blooms tied with lover's knots with loops of pearls.

At the conclusion of the ceremony, the couple knelt on a white satin prayer bench while The Lord's Prayer was prayed in unison.

The maid of honor was Miss Diane Shaffer of Hillsboro, Ohio, who is attending The University of Mississippi. Bridesmaids were Mrs. Larry Doran of Corinth and Mrs. William Dallison of Booneville. Mitzi Young, niece of the bride, was flower girl. They were attired in stunning opal blue peau de soie designed with a scoop neckline, fitted bodices, bouffant skirts, and brief sleeves. They wore matching slippers, white gloves, and their circular headpieces were of peau de soie edged with seed pearls with veils of tulle. The bridesmaids and maid of honor carried sophisticated cascading bouquets of waxy white phalaenopsis orchids and tulle, with stylized lace leaves trimmed with pearls. The flower girl carried a white satin basket with white tulle, decorated with a blue satin rose and blue tulle and filled with miniature white pom-poms. The ring bearer, David Greene, nephew of the groom, carried a white brocade pillow on which the ring was placed.

Bobby Greene of Port Lavaca, Texas, served as best man. Ushers were Dean Saylor, William Dallison, Billy Jones, Edward McCoy, John Bell Young, Jr., and Billy Joe Young. William Dallison and Billy Joe Young lighted the candles.

Mrs. Young, mother of the bride, was attired in an Original by Migration in sea spray pure silk crepe



On Saturday, September 12, Mrs. Guy Robertson and Mrs. Billy Spain entertained with a luncheon honoring Miss Connie Sue Young and her bridesmaids. Those seated are, from left to right: Mrs. William Dallison, Miss Connie Sue Young, and Mrs. Larry Doran. Those standing are, from left to right: Mrs. Billy Spain, Miss Virna Ruth Alexander, Miss Diane Shaffer, Mrs. John Bell Young, Sr., Mrs. Guy Garner and Mrs. Guy Robertson.

fashioned with a scoop neckline and short sleeves. The sheath was embroidered with tiny beads, enhancing the beauty of the stunning dress. She wore matching shoes and her small hat with brow veil complemented the dress in color. Her white kid gloves were elbow-length and she carried a white beaded clutch bag. Her corsage was pink cymbidium orchids backed with pink tulle.

Mrs. Garner, mother of the bridegroom, wore a fashionable sheath of teal blue, finished of couture tailoring touches. She wore a lovely matching high crowned Breton and her white gloves were bracelet length. She carried a beaded clutch bag and her corsage was of pink cymbidium orchids amid fluffs of tulle.

For her wedding trip to the Smoky Mountains, the bride wore a lovely three piece silk suit of beige tones accented with green by Judy Juniors of Dallas. Her velvet hat was of matching tones, styled by Doris. Her shoes were cinnamon stick alligator lizard, Cherie, with a matching purse, beige kid gloves and she wore the orchid from her bridal bouquet.

RECEPTION

The reception was held in the social hall of the First Methodist Church. Greeting the guests were Mr. and Mrs. John Bell Young, Jr.

Garlands of silk cord with large satin wedding bells at intervals, and a white dove, symbolizing peace and happiness, provided a picturesque setting for the receiving line. The bride and groom stood before two candle trees flanked with fern trees.

After they passed through the receiving line, guests were registered at a beautifully appointed table by Mrs. Louis Stell. Gracing the table was a footed silver vase holding white chrysanthemums,

greenery and a delicate lace bridal fan. A romantic arrangement of blue roses was used at one side. The color scheme of blue and white, used at the reception, are the colors of the bride's sorority, Alpha Delta Pi.

Two tables were used for serving, both covered with exquisite cloths. The bride's table was overlaid with a Madeira cutwork cloth and featured a beautiful three-tiered cake, lavishly decorated with all-white wedding bells and topped with a miniature bride and groom.

To one side was an artistic arrangement of a candelabra with nine blue glittering candle cups with raindrops of gold, white carnations and white pom-poms and greenery. Lovely blue satin roses and garlands of blue tulle, matching the bridesmaids' dresses, adorned the sides of the cloth. Blue and white mints and mixed party nuts were served from crystal compotes. Capably overseeing the serving of refreshments was Mrs. Arthur Schultz. Assisting at the bride's table were Mrs. Ray Ayers and Miss Dorothy Mason.

The table, on which the crystal punch bowl was placed, was covered with a choice lace tablecloth over white and decorated with elegant blue satin roses and tulle, effectively arranged. Serving the delicious punch were Miss Virna Ruth Alexander and Miss Virginia Tays.

Handsome wrought iron tree candelabra, fern trees and arrangements of white gladioli were used at vantage places in the Social Hall. Mrs. Nabers provided soft piano music for the reception.

Rice bags of blue tulle tied with white satin ribbon were given to the guests by Peggy Robertson, Patti Young, Norma Ray Young, Kenelle Lindsey and Laura Spain.

Tea girls were Paulette Young, Katherine Tays, Charlotte Oakley, Shirley Oakley and Sandra

Pounds.

Also assisting with the reception were Mrs. Guy Robertson, Mrs. Lila Young and Mrs. Tom Peeler. All wore white carnation corsages.

OUT-OF-TOWN GUESTS

Among those from out-of-town attending the wedding were: Miss Diane Jeanne Shaffer, Hillsboro, Ohio, Ole Miss sorority sister of the bride; Miss Virna Ruth Alexander of Rolling Fork, Miss., also a sorority sister; Mrs. John Curlee, Jr., of Marks, Miss., Mr. and Mrs. Johnny Davidson, Baldwin, Miss. Hazel Clayton, Memphis, Tenn., Mr. and Mrs. Marion Moore, Brooksville, Miss., Mr. and Mrs. Walter Green, Baldwin; Mr. and Mrs. William Morgan, Miss Harriette Anne Morgan, David Morgan, all of West Memphis, Ark., Mrs. T. Stratton Daniel, Jr., Birmingham, Ala., Mr. and Mrs. Percy E. Lewis and Miss Myrtle Malier of Tupelo; Mr. and Mrs. Marvin Hines of New Albany, Mr. and Mrs. Robert T. Heyer, Lee and Bob Heyer and Mr. Robert Heyer, Sr., all of Corinth; Mr. and Mrs. John G. Douglas of Oxford, Miss.; Mr. and Mrs. Ray R. Ayers of Huntsville, Ala.; Mrs. G. J. Stockley of Marianna, Ark., house-mother of Alpha Delta Pi at Ole Miss; Miss Gail Ford, Orlando, Florida, sorority sister at Ole Miss; Mr. and Mrs. William Green Nesbit of Amory, and Mrs. Larry Doran of Corinth.

REHEARSAL DINNER

Mrs. Guy Garner entertained with a beautifully planned rehearsal dinner on Saturday evening, Sept. 12th.

The private dining room of the Town Motel Restaurant was the setting for the dinner at 7 o'clock. The U-shaped tables were attractively and artistically decorated with white tapes with blue net bows. An arrangement of white chrysanthemums and greenery, ornamented by three lighted pastel glittering candle cups, graced the center of the table at which the honored guests were seated. Petite containers of chrysanthemums and carnations were placed on either side.

The individual place cards featured two entwined hearts of seed pearls with a background of blue satin ribbon.

The honoree was beautifully costumed in a putty brocade cotton three-piece ensemble. The skirt was fitted and the sleeveless over-blowse had a low-cut neckline. The three-quarter length sleeved jacket featured rhinestone buttons. She wore a white carnation corsage.

Mr. Garner presented the attendants with sterling key chains.

The menu, consisting of congealed strawberry salad, ham, asparagus casserole, baked potatoes, rolls, iced tea, and individual cakes with ice cream, was served to the guests which included the bridal party, those from out-of-town, and other special guests.

BRIDESMAIDS LUNCHEON

On Saturday, September 12, Mrs.

Guy Robertson and Mrs. Billy Spain entertained with a luncheon honoring Miss Connie Sue Young and her bridesmaids. The luncheon was held in the private dining room of the Town Motel.

The table was decorated with lighted candelabra tied with blue tulle and silver satin wedding bells. In the center of the table was a silver bowl filled with white carnations and pom-poms adorned by an arched bridal fan. Place cards, marking the places of guests, were colorful sachet tablets daintily encased in blue tulle.

Seated with the honoree and hostesses were Miss Diane Shaffer, Mrs. William Dallison, Mrs. Larry Doran, Miss Virna Ruth Alexander, Mrs. John Bell Young, Sr., and Mrs. Guy Garner.

The bride-elect was lovely in a black and white jacket dress. She wore a white carnation corsage.

The hostesses presented the honoree with a silver tray. Miss Young gave her bridesmaids sterling monogrammed letter openers.

The menu consisted of a luscious bridal salad, tomatoes stuffed with chicken salad, baked potatoes, garnished green peas, pickles and olives, hot rolls, iced tea and a dessert course of parfait and individually iced cakes.

SOCIAL EVENTS

The many lovely social events honoring Miss Connie Sue Young began on July 28th, when Mrs. Larry Doran of Corinth entertained with a "Chat Party" at the home of her mother, Mrs. Lucille Smith. Those enjoying the evening were: Mrs. Faye Dallison, Mrs. Lanois Davidson of Baldwin, Mrs. Beverly Melton, Mrs. Marcella Stell and Miss Dorothy Mason. After being served home-made ice cream, cookies and cakes, the guests were taken through the future home of the bride-to-be.

Among the other courtesies shown the popular bride-elect and groom-to-be were a Cook-Out at the Fred Houstons; a Miscellaneous Shower at Blackland; a Bingo Party and Surprise Kitchen Shower at the home of Mrs. Floyd Cunningham; a Buffet Supper, given by Mrs. Troy Moore and Mrs. Don Eubanks; and a Miscellaneous Shower at the Town Motel. Articles of these events have previously appeared in this paper.

Malones Of Miss.-Ala. To Hold 14th Annual Reunion

The 14th annual reunion of the Malone families and their descendants will be held at the City Park in North Russellville, Ala., on next Sunday, Sept. 20th.

Bring along a few sandwiches and enjoy the family get-together as so many have in the past 13 reunions. There is a large covered place to meet in should it be raining.

J. T. Malone, Reporter, 208 S. 5th St., Amory, Miss.



now you can get total timekeeping with **BULOVA**

Date watches... FROM \$35.95



HEIRRESS OF TIME—Tells time and date at a glance. Waterproof. Self-winding. 17 jewels. Stainless steel case. \$65.00

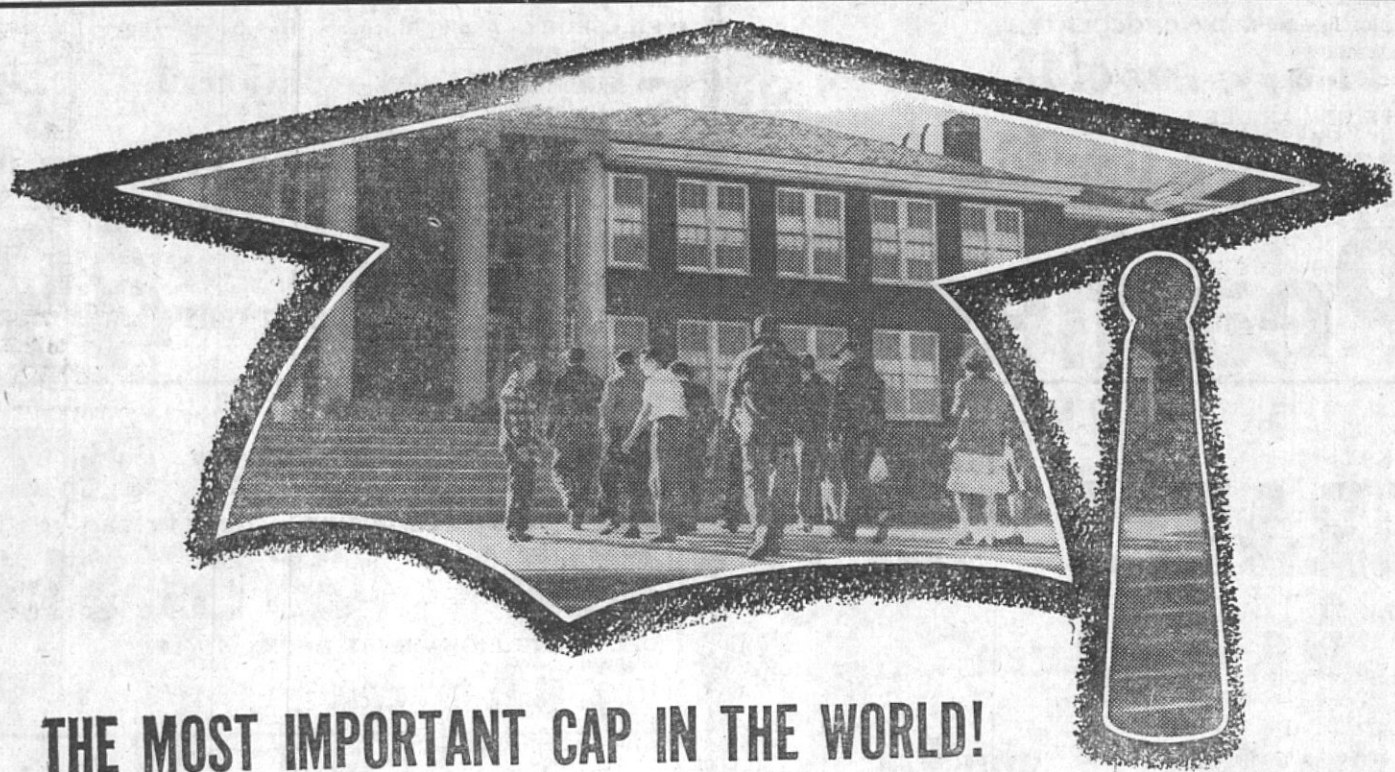
*When case, crystal and crown are intact.



PHYSICIAN—The watch that has everything! Tells time and date at a glance. 30 jewels. -14K gold case. Waterproof. Self-winding. Shock-resistant. \$105.00

Think modern! Think of the convenience of a watch that gives both time and date! Think Bulova! No one gives you more quality and value for your money. Let our watch experts help you choose a handsome Bulova Date watch... from our large selection.

WAY-FIL JEWELRY



THE MOST IMPORTANT CAP IN THE WORLD!

We're talking about the cap that goes with the gown on college graduation day. Nothing you can think of will mean so much to the future of your son or daughter. Of course, it's pretty expensive headgear... and getting more so all the time! Which is why you should start thinking NOW about how you're going to foot the bills.

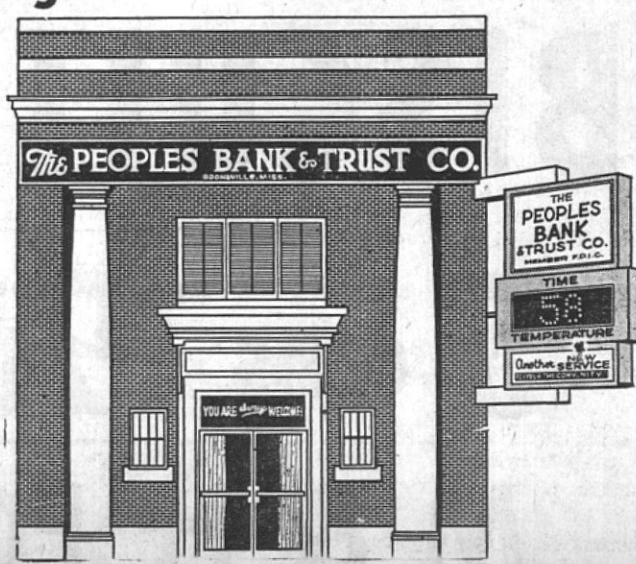


Basic to accumulating the necessary funds for your children's college education is a comprehensive and flexible savings plan. Come in and let us help you tailor a plan to your specific needs, taking into account the ages of your children, your income, etc. The sooner you get started, the easier!

We extend a cordial welcome to all teachers and students in the schools of our County and Junior College.

The Peoples Bank & Trust Company

Member Federal Deposit Insurance Corp.



GOLDWATER BUMPER BLITZ

Saturday, Sept. 19, 9 to 12

at the Old Sinclair Service Station building on Highway 45 at the Four-Way Stop in Booneville. Drive by and get your Free Goldwater Bumper Sticker.

We would like to take this opportunity to urge you to write your friends and relatives in Northern and Western states and encourage them to register and vote for Goldwater. Support is especially needed in Illinois, Michigan, Wisconsin and California. By writing these people you can certainly help the South and the Goldwater Cause.

Let's Go, Go, Go Goldwater In '64

PAID FOR BY PRENTISS COUNTY REPUBLICAN COMMITTEE — R. J. "PIGGY" BONDS, CHAIRMAN

Hospital Notes

Smoke only with hospital approval . . . even though the patient may be allowed to do so . . . Avoid litter.

ADMISSIONS—

Quana Woodruff, Sue Smith, Lester Holmes, Walter Davidson, June Clayton, Evie Duncan, Shirley Morgan and baby, Eileen Hare, Ida Holley, Rozzie Garvin, Donna Hickman, Betty Ledbetter, Stanley Southern, Jeffie Campbell, Hettie Green, Delene Gann, Chester Spencer, Ruby Bush and baby, Estelle Warren and baby, Kathleen Ragins, Virginia Ford, Elizabeth Johnsey & baby, Betty Lindsey, Nova Downs, Dorothy Rogers, Milton Nichols, Carl Moore, Charles Holley, Mildred Lauderdale, Rhonda Hutchenson, Mike Kemp, Cleo Ward;

Tom Reed, Ebby Moore, Thomas Lacy, Mattie Wren, Barbara White, Wauchita Johnson, Theresa Johnson, Kizzie Smith, Billy Whitley, Walter Storey, Pat Brown, Sarah Nanne, Billy Bowen, Maggie South, Beth English, Frances Reese, Wayne Hall, Milton White, Ruth Ashcraft, Jeff Burress, Brenda Purvis and baby, Virginia Stephens, Bob Phifer, Joeline McCoy, Novene Stutts and baby, Agnes Moreland, Vance Jones, Humbert Lovell, Mary Francis Garner, Dorothy Hatley, Helen Gildewell.

DISCHARGES—

Earlene Holder, Betty Lindsey, Myrtle Thornton, Winston Newcomb, Ruby Middleton, Ellis Gann, Jimmie Lovell, Edith Morris and baby, Allie Mae Perry, Sam DuBoise, Lora Ellis, Barbara White, Marie Morgan and baby, Joyce Bailey, Julia Olive, Mattie Wilemon, Decie Sappington, L. B. Moorman, Sue Smith, Howard Huddleston, Mary Lee Turner, Doris Riddle, Virginia Strange, Mary Ford, Dewey Ray, Elbert McVey, Evie Duncan, Raymond Keenum, Helen White, Ruby Aldridge, J. V. Moore, Raymond Sappington, Mildred Shook;

Donna Hickman and baby, Varion Lindley, Quana Woodruff, Annie Mae South, Mike Kemp, David Johnson, Chester Spencer, Ruby Bush and baby, Estelle Warren and baby, Shirley Morgan and baby, Virginia Ford, Nola Whitley, Minnie Simmons, Billy Whitley, Travis Davis, June Clayton, Elizabeth Johnsey and baby, Alene Ryan, Milton Nichols, Wauchita Johnson, Theresa Johnson, Berdell Moment, Betty Steen and baby, Les Hall.

J. R. Barron Buys Registered Angus

J. R. Barron, Booneville, recently purchased an Aberdeen-Angus bull from J. C. Cole, Paden, Miss.



MISS JO ANN OWEN

Miss Jo Ann Owen And Charles Ruben Reaves To Be Married On September 20

Miss Jo Ann Owen and Charles Ruben Reaves will be married on September 20 in Kennedy Baptist Church in Memphis, according to an announcement by her parents, Mr. and Mrs. Lawrence Edwin Owen of New Albany, Miss.

Mr. Reaves is the son of Dale Reaves of Jonesboro, Ark., and the late Mrs. Faye Reaves.

The bride-elect was a 1961 graduate of Center High School, outstanding in Home Economics and Commercial Studies, a beauty and a winner of the Citizenship Award. She received an Associate of Arts Degree from the Northeast Mississippi Junior College at Booneville in June, 1963, was vice-president of the Baptist Student Union, Miss Future Business Executive, Secretary-Treasurer of the Student Government Association, a 1962 and '63 college beauty featured in the year-

book; she was on the college yearbook and newspaper staffs and was selected most versatile, a member of the Phi Beta Lambda honorary society, and was the 1962 Fairest of the Fair for the Mid-South Fair. She was Miss Booneville and one of the ten finalists in the Miss Mississippi contest in 1962. She was also an alternate to the National Catfish Derby Queen contest.

Mr. Reaves was graduated from Jonesboro High School and from Arkansas State College in Jonesboro. He was a member of Alpha Kappa Psi, honorary business fraternity.

The prospective bridegroom is a controller trainee with Sears, Roebuck and Company.

All friends and relatives of the couple are invited to attend the wedding and reception immediately following at the church.

ON THE LOCAL SCENE

Mr. and Mrs. N. T. Dilworth and Mrs. Fugher of Memphis visited Mr. and Mrs. Fate Gullett and Mrs. C. E. Smith, Sunday.

James Stephens, of Chicago, Ill., has been visiting his brother, Mr. and Mrs. Euvon Stephens for the past two weeks.

Guests of Mr. and Mrs. Gordon Walden and June over the weekend were Mr. and Mrs. M. L. Bolen from Cherokee, Ala.

Mr. and Mrs. V. E. Smith of Austin, Texas, are visiting his mother, Mrs. C. E. Smith of Booneville and his sisters, Mrs. Fate Gullett and Mrs. Roscoe Bane.

Mrs. Roxie Chapman and Kay, Mrs. Nina Faye Holder and Wanda, Mrs. Stella Gustafson and June Walden motored to Memphis last Thursday night for a business trip, as well as for seeing friends.

Miss Lil Gaines spent the week end in Memphis visiting Miss Sammie Gaines and Mr. and Mrs. Bob Taft.

Mr. and Mrs. Clyde Jones and Mr. and Mrs. Hubert McDaniel will attend the Memphis State and Ole Miss football game Saturday at Oxford.

Mr. and Mrs. V. E. Smith, Mrs. Fate Gullett and Mrs. Roscoe Bane accompanied Mrs. C. E. Smith to her sister's, Mrs. W. R. Sutor in West Point, Miss., Tuesday.

Mr. and Mrs. Dennis Stutts are receiving congratulations over the arrival of a son born Monday, September 14 at 2:14 a.m. at the Northeast Miss. Hospital.

Mr. J. E. Deaton returned from Kenosha, Wisc., Sunday where he visited with Mr. and Mrs. Wade Adams. Mrs. Adams, Kim and Kay returned with him for a two-week visit. Mr. Adams will join them in two weeks.

Mr. and Mrs. Julian Patrick of Meridian visited Mrs. W. W. Cunningham and Mrs. Frank Milton over the weekend.

Mr. and Mrs. W. S. Rutherford, Ann, Kay and Judy accompanied those attending Mr. Hosie White's birthday dinner Sunday were Mr. and Mrs. Bill White, Judy and Billy, Marguerite Gaddis, Mr. and Mrs. Hollie White, Mr. and Mrs. Herschel Presley, Martha Kay, Riley, Sandra and Tony, and Mrs. Hosie White.

Guests of Mr. and Mrs. J. P. Sutherland over the weekend were Mrs. Minnie Robison, Mr. and Mrs. Robert Spicer, Tony Tue, and Mrs. Herman Stewart of Pascagoula, Miss., and Mr. and Mrs. Hollis Sutherland of Rienzi.

THE NEWS FROM— JUMPERTOWN

By ANNIE ENGLISH

Mr. and Mrs. James Moore and Mr. and Mrs. Lauderdale went to the Smokies on their vacation last week.

Mrs. Norman English is a patient in the local hospital. We wish for her a speedy recovery.

Mr. and Mrs. Otis Cox, Bobby and Pam and Mrs. Ollie Windham spent the weekend in Memphis with Mr. and Mrs. John Hickey and family.

Mr. and Mrs. Otis Cox, Bobby and Pam visited Mr. and Mrs. Hollis Jumper and Mr. and Mrs. Gary Jumper in Blytheville and Jonesboro, Ark., over the weekend.

Mr. Milton English, Woodrow English and Weldon Lee made a business trip to Berwyn, Ill., Friday and Saturday.

Mr. and Mrs. Arthur Blackwell of Hinkle and Mrs. Paul N. Gann, Barbara, Gil and Randy of Liberty Community visited the G. A. English family Sunday.

Mr. and Mrs. Paul Dobbins, Roy Green, Mrs. Myrtle Williams and Mrs. Gretchen Smythe, all of Booneville, visited Mrs. J. R. Thomas Sunday.

Preaching services will be held at the Jumpertown Methodist Church Sunday, September 20. Sunday School starts at 10:00 a.m. and church services at 11:00.

Homecoming Held At Old Burcham School

Homecoming at Old Burcham School ground the first Sunday in September was a joyous day for old friends as well as new who enjoyed the day talking with each other and recalling glad and sad memories of the past, which they had had at the old familiar meeting place.

A large crowd attended and all enjoyed a good meal which they spread together at the noon hour.

Five different states were represented — Tennessee, California, South Carolina, Alabama, and many different sections of Mississippi.

Two of the former teachers, Mrs. Ruth Browning Cadle of Decatur, Ala., and Mr. T. G. Garrett of Booneville, were present.

An annual homecoming was planned to be held there each year in the month of September.



ATTEND B.S.U. RETREAT—Approximately forty Baptist Student Union members at Northeast Mississippi Junior College attended the B.S.U. Retreat on September 11 and 12 at Chickasaw State Park in Henderson, Tenn. The group was accompanied by C. Wayne Neal, B.S.U. Director, Mrs. Neal, and Al Weed, Physical Education Director and Faculty Advisor of the B.S.U. Shown above, left to right, C. Wayne Neal; Sammy Dowdy, SGA vice-president, Ingomar; Joe Joslin, Walnut, B.S.U. president; Richard Owen, SGA president, New Albany; and Coach Weed. Rev. Bill Langley, First Baptist, Wheeler, Pastor Advisor of the B.S.U., was keynote speaker for the conference.

adopted cash dividend policy, even of New York as Transfer Agent of though the outstanding number of the company, and Wachovia Bank shares shall be increased 20 per cent.

It was also announced by Mr. York has been appointed Registrar that the Board of Directors has these appointments shall be have appointed Bankers Trust Co., effective Sept. 30, 1964.

Fryers BACON

USDA Grade A - Plump & Tender
1 3/4 to 2 Pounds Average

ea. **49c**

Laurel Sugar Cured
Tray Packed

lb. **49c**

Ribs & Back Bone

lb. **55c**

Sausage

Dixiana

3 **\$1.00**

Sirloin Steak

U. S. Choice

lb. **89c**

Southern Belle

Hams

Shank Portion

lb. **39c**

Kraft Oil

(Limited)

Quart

39c

PLANTER'S

Peanut Butter 18-oz. **49c**

LUCKY LEMON OR CHOCOLATE

PIES, box of 12 **39c**

CHEF BOY-AR-DEE

Spaghetti & Ground Beef 4/**\$1.00**

KRAFT TASTY LOAF

Cheese Spread 2 **67c**

PILLSBURY—Apple, Blueberry, Raspberry

TURNOVERS, pkg. of 8 **49c**

TODAY

PINK SALMON, No. 1 tall can **49c**

Peaches

Hunt's Halves or Slices

2 No. 2 1/2 cans **49c**

PRODUCE

TOKAY

GRAPES lb. **10c**

SUNKIST

LEMONS, dozen **29c**

FRESH

Green Onions, 2 bunches . . . **25c**

WAXED

RUTABAGAS, lb. **8 1/2c**

GOLDEN DELICIOUS

APPLES, each **5c**

WHITE

ONIONS, 3 lbs. **29c**

GOLD MEDAL

Salad Dressing Qt. **29c**

DIXIE SPECIAL SELF-RISING — GUARANTEED

Flour 25 lbs. **\$1.89**

DEL MONTE LIGHT MEAT CHUNK STYLE

TUNA, can **29c**

FROZEN FOOD

FROSTY ACRES

Orange Juice, 6-oz. . . 2 for **49c**

LIBBY—Chicken, Beef, Turkey

Pot Pies 8-oz. 3 **49c**

EGGS Phillips Grade A Med. Doz. **39c**

Strawberry Preserves Kraft 18-oz. glass **49c**

WITH COUPON AND \$5.00 ADDITIONAL PURCHASE

BISCUITS

Ballard or Pillsbury

5 cans 19c



\$10.00 PURCHASE REQUIRED TO REDEEM BOTH COUPONS

bettijean



Pretty promenader on the style scene — a huge oval collar of natural mink does fascinating things to every face! . . . and the thrilling fabric is FANTASSA, wool and treasured fur fibres . . . craftsman-tailored by Bettijean with double-stitched back seams, and the same stitching on raglan armholes in front. Four buttons for snug closing. Newest fall colors.

\$99.95

Oh, what a young charmer this is. A jewel-embellished tab at the waistline, above tiny slit, is coordinated with antiqued lapel jewel. Three buttons, big as half-dollars, add to the fashion fanfare. BALESTRA worsted wool, traditionally tailored with Bettijean famous finesse. Newest fall colors.

\$57.95

Fashion headlines all the way! Shimmering squirrel is the collar, flashed with a bright jewel. The fabric is lustrous CONTINA polished wool, at its beautiful best with these deep curves of reverse stripping (so designer-salon looking!). Newest fall colors.

\$79.95

GRAY'S

M & H FOOD MARKET

On The Local Scene...

Dr. and Mrs. Jim Blankenship and children of Memphis, Tenn., spent the weekend with Dr. and Mrs. James S. Long.

Ester Lauderdale left Saturday for Delta State College to resume her studies there as a senior in the field of Sociology and Physical Education.

Mr. and Mrs. Kenneth Baker and Boyd, and Mr. and Mrs. Clyde Baker of Aurora, Ill., enroute to Florida, recently, stopped by for a visit with Mr. and Mrs. Kelly Wroten and the Wrothen Hughes' of Booneville. They also visited relatives in Tishomingo. On their return trip home, they stopped again for a visit and reported a wonderful time. While in Florida they visited many places of interest.

Mr. and Mrs. Watt Moore and Dennis and Mr. and Mrs. James Moore from Kennett, Mo., visited friends and relatives in Booneville last Wednesday.

Mrs. Hasting Barnett visited relatives in Memphis over the weekend.

Bro. and Mrs. T. F. Grubbs accompanied Miss Voncille Rushing to the Baptist Theological Seminary in New Orleans last Tuesday and returned Wednesday.

Mr. and Mrs. Sidney F. Green, Beckie, Jane, Doyle and Ann, of Norfolk, Va., Mr. and Mrs. Ralph F. Burrage, Ronny Joe and Patty of Tennessee, Mr. and Mrs. George E. Harding, Jr., Eddie, Jimmy and Billy of Leeds, Ala., were guests of Mr. and Mrs. A. S. Green over the weekend.

Friends of Mrs. Lora Ellis are glad to know she is improving at home after spending several days in the local hospital.

Mr. and Mrs. Stanley Ellis and family returned to their home in Columbus, Ohio, Thursday, after spending several days with his mother, Mrs. Lora Ellis.

Mrs. Mable Hill has returned home after spending over two months in Connecticut with her son, David L. Hill and family.

Mr. and Mrs. Tommy Stephens returned to their home in Milwaukee, Wis., recently after spending several days with Mrs. Tom Stephens and Ronny.

Mr. and Mrs. Doug Miller, Mr. and Mrs. W. M. Murphy, Mr. and Mrs. L. L. McAlpin, Billy Hester, Thurman Massey, and Marion W. Smith attended the Shriner ceremony held in Columbus last Saturday. Mr. Miller, Mr. Hester and Mr. Massey were candidates.

Ronny Stephens was the weekend guest of Miss Elizabeth Adams in Kossuth, Miss.

VA Answers Vets Questions

Q—I have a policy loan on my World War II life insurance policy. Can payments on this loan be made in any amount, or are there restrictions?

A—The only restriction is that the payment be at least five dollars or more is acceptable.

Q—I have been receiving \$75.00 compensation because of my son's death in service. Has this rate increased lately?

A—A new law provides graduated rates to parents, depending upon other income which must be estimated and reported each year. The rates have been increased about 10 per cent.

Q—Will the VA let me know who is listed as beneficiary on my government life insurance?

A—Yes, the VA will give you that information upon request—however, if you are not sure who the beneficiaries are, it is preferable to make a new designation the way you want it now. This will cancel all previous designations.

The \$50 Series "E" U. S. Savings Bond (costing only \$37.50) is becoming increasingly popular with Payroll Savers. Only \$9 weekly buys one a month comfortably.

"What Goes With What?" Is Theme Of HDC Meeting

"What Goes With What?" was the theme of the East Booneville Home Demonstration Club at their regular monthly meeting held on Tuesday night, Sept. 8, at the home of Mrs. Vernon F. May.

The meeting was called to order by Mrs. May, who also gave reports as to the various projects and goals of the club for the following year.

It was also reported that the Home Demonstration Clubs of the county have adopted as a project to award a full scholarship to a Home Economics major enrolled at the Northeast Mississippi Junior College.

Gifts to be presented to the hospital for the needy patients were displayed.

To follow up on the theme, Mrs. Clara Ross, Home Demonstration Agent, gave the demonstration on the colors, styles, and furnishings needed to make a home look neat and attractive, but at the same time be comfortable.

Here are some of the things she pointed out:

(1) Select a major color theme and stick to it.

(2) Select furniture of the style that will go with the house.

(3) Let the clean, orderly, uncluttered look be prominent. It is better to underdo than overdo.

(4) Use good design in fabrics, accessories, and furnishings. Too many large realistic designs will tire you easily.

(5) Strive for an individual look, reflect your own personality and imagination.

As a climax for the meeting, Mrs. Jimmy Spencer showed films of the historical places of our own home state, Mississippi.

Station Develops New Oat Variety Good For Forage

STATE COLLEGE, Miss.—A new oat variety, bred especially for forage production, has been developed by the Mississippi Agricultural Experiment Station. Dr. S. S. Ivanoff completed work on the new oat and named it Forager just before his recent retirement.

Although seed of Forager will not be available for farmers to plant this season, they are being increased so that certified growers may obtain foundation seed in 1965. The seed increase program is handled by Foundation Seed Stocks at State College, Miss.

Because of the importance of winter grazing for livestock producers in Mississippi, the new oat is expected to be of great value in the state. Advantages listed for the new oat include its ability to grow back quickly when grazed, its cold hardiness, and its disease resistance.

Developed primarily for forage, the new oat is capable of good grain production although its grain yields have not been as high as some of the other varieties now grown in the state. Forager is recommended chiefly for north and central Mississippi, including the Delta.

In a test at State College reported by a former Experiment Station staff member, Dr. D. G. Wells, Forager ranked first in forage production among 17 small grain entries. The test included three oat varieties, four wheat, six rye and four barley varieties.

A complete report of the characteristics of the new oat and the history of its development is published in the September issue of Mississippi Farm Research available on request from the Experiment Station at State College.

Bollworms In Soybeans

Farmers are using 2 lbs. of 80% sprayable Sevin per acre to kill bollworms in soybeans. Shake soybean plants roughly and look on ground for worms. Bollworms will roll up, cabbage loopers will have

Rites Held For W. W. Swinney

Services were held at 2:00 p.m., Saturday, September 12th at McMillan Funeral Home for Mr. William Walker Swinney of Booneville. Burial took place in the Liberty Cemetery with McMillan Funeral Home Directors in charge and with Brother J. L. Gore officiating.

Mr. Swinney, who was 70, died at 12:30 p.m. Thursday, September 10, in Caldwell Memorial Hospital after five years of failing health.

He leaves his wife, Mrs. Lottie Umfress Swinney; one son, Bill Swinney of Virginia; and three daughters, Mrs. Nancy Wigginton of Waukegan, Ill., Mrs. Christine Pierce, of Chicago, Ill., and Mrs. Marjorie Davis of Zion, Ill.

a fit and continue crawling. The bollworms feed on tender beans in the soybean pods. The loopers feed on leaves. Apply insecticide Sevin when you find 3 bollworms per foot of row. Bollworm infestation seems to be general—especially where soybeans are still green and growing. Look—act now!

Patrick's Present Fashion Show For B. & P. W. Club

The Business and Professional Women's Club met Thursday, September 10 at the Town Motel. Mrs. Thomas Keenum, president, presided. The invocation was given by Mrs. Herbert Brown.

The table decorations of beautiful hats and brochures of dress styles were arranged by Miss Ann Rutherford and Mrs. Harold D. Spain.

Mrs. Bobby Burress, Jr., Miss Billie Jane Bingham, Miss Janice Poole, Mrs. George Oakley, Miss Gloria Rutherford and Miss Juanita Bugg were recognized as visitors.

Mrs. Luther Moore, director for the meeting, presented Patrick's special showing of fashions for fall '64. Everyone was immediately impressed as a great variety of styles and materials were displayed by each model. This fall showings find shapes come both easy and fitted, with strong emphasis on the importance of the overblouse look in either dresses or two pieces. The popular dropped waistline effect makes a dashing appearance. Wool, as always, is champion in the nat-

urally beautiful fiber, but the real surprise is in the wildly double-knit wool fashions. This year's colors are very, very contemporary. They glow with the depth of strong tones such as antique gold, currant red, greens and blues

Mrs. Jack Dubard was commentator for the fashion show and Mrs. George Oakley was pianist. The models were Billie Jane Bingham, Janice Poole, Mrs. Bobby Burress, Jr., Mrs. Eugene Gifford, and Mrs. W. H. Anderson.

During the business meeting, the club voted to sponsor Miss Carolyn Bishop, a nursing student at Northeast Miss. Jr. College.

Mrs. Clyde Jones, Prentiss County's Crippled Children's Easter Seal Chairman, announced that this chapter raised the second highest in contributions in the state. Mrs. Jones has been asked to appear on a panel in Jackson, Miss., October 17 at the Heidelberg Hotel to discuss ways and means of receiving contributions. The B. and P. W. Club sponsors this project each year.

Fall Weight Bagging

Cotton bale bagging weighing less than 32 ounces per yard or 12 lbs.

per bale of cotton reduces total bale CATTLE GRUB CONTROL value. Check the weight of your bagging and buy only 32 ounce bagging—12 lbs. per bale.

IF IT'S LOOKING FOR THE BEST IN FARM LOANS—



DO IT YOURSELF!

IF YOU WANT TO
Save money with a low
interest rate

IF YOU WANT TO
Have convenient terms

IF YOU WANT TO
Enjoy benefits of dealing
with an institution with
43 years of experience in the mortgage
loan business.

SEE YOUR

**FEDERAL LAND BANK
ASSOCIATION**



WHERE YOU'RE ALWAYS AMONG FRIENDS
U.S.D.A. CHOICE

CHUCK ROAST
BLADE CUT - lb. 39¢
CENTER CUT - lb. 45¢

Round Bone

Shoulder Roast lb. 59¢

Boneless

Pot Roast lb. 69¢

Mayrose All Meat

FRANKS lb. 49¢

Southern Belle

BACON lb. 49¢

Gollott's

OYSTERS Pt. 99¢

Mayrose Fully Cooked

Canned Hams \$2.79

Boston Butt PORK

Shoulder Roast lb. 39¢

Sliced BACON

Ends & Pieces 5 LBS 89¢

-- FROZEN FOOD --

MORTON — 22-OZ. SIZE

FRUIT PIES, Apple & Peach . 25¢

MORTON — 8-OZ. SIZE

MEAT PIES . . . 5 for \$1.00

LIBBY — 6-OZ. CAN

ORANGE JUICE . . . 4 for \$1.00

LIBBY — 10-OZ. PKG.

STRAWBERRIES . . . 2 for 59¢

-- PRODUCE --

Bananas lb. 10¢

SEEDLESS

GRAPES lb. 19¢

JONATHAN

APPLES

CALIFORNIA

TOMATOES

LETTUCE

With Coupon and \$5.00 Additional Purchase

SUGAR 5-lb. Bag 19¢

With Coupon and \$5.00 Additional Purchase

100 FREE Quality Stamps

\$10.00 PURCHASE NECESSARY FOR SUGAR AND STAMPS, EXCLUDING CIGARETS & TOBACCO. LIBBY

Pineapple Juice 46-oz. can 3 FOR \$1

★ **Libby TOMATO JUICE, 46-oz. can . . 4 for \$1.00**

★ **Libby CATCHUP, 14-oz. bottle . . . 6 for \$1.00**

★ **Libby Potted Meat, 3 1/4-oz. can . . . 11 for \$1.00**

★ **Libby VIENNA SAUSAGE, 1/2 can . . . 5 for \$1.00**

LIBBY

★ **Peaches 2 1/2 cans 4 FOR \$1**

LIBBY

★ **SLOPPY JOE'S, 15 1/2-oz. can 59¢**

LIBBY

★ **CHILI and BEANS, 15 1/2-oz. can 4 for \$1.00**

LIBBY CREAM STYLE

★ **GOLDEN CORN, No. 303 can . . . 8 for \$1.00**

LIBBY

★ **PORK and BEANS, 14-oz. can 8 for \$1.00**

LIBBY

★ **Fruit Cocktail 303 5 Can/ for \$1**

★ **Libby BEEF STEW, 24-oz. can 39¢**

★ **KLEENEX, 400 count 4 for \$1.00**

BAMA — STRAWBERRY, BLACKBERRY, APPLE or GRAPE

★ **JELLY, 18-oz. glass 4 for \$1.00**

A J A X

★ **Pillsbury FLOUR, 5-lb. bag 49¢**

Detergent Gt. Box 59¢

★ **Strietmann ZESTA CRACKERS, lb. 27¢**

★ **Jack Sprat COFFEE, 1-lb. can 69¢**

50 FREE QUALITY STAMPS WITH PILLSBURY

★ **CAKE MIX, 18-oz. box 3 for \$1.00**

50 FREE QUALITY STAMPS WITH

★ **BUFFERIN, 60's 89¢**

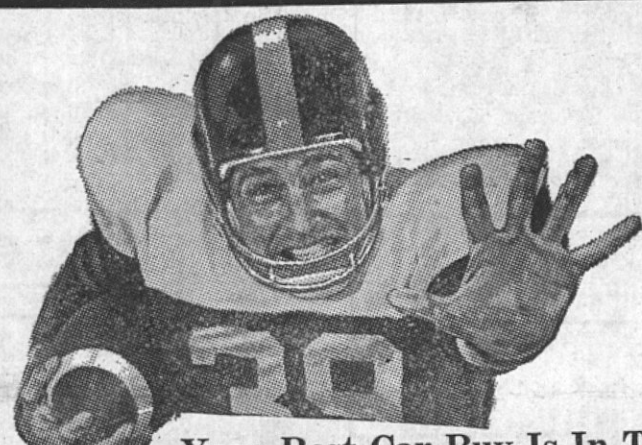
4-lb. bag 49¢

lb. 19¢

2 Heads 29¢

Coupon
with coupon and
\$5 Additional
purchase
SUGAR
5-lb. bag 19¢
— LIMIT ONE —
Expires 9-23-64

Coupon
with coupon &
\$5.00 Additional
Purchase
100 FREE
QUALITY
STAMPS
— LIMIT ONE —
Expires 9-23-64



Your Best Car Buy Is In This
WINNING LINE-UP!

**A Few 1964 Ramblers
at Dealer's Cost
WHILE THEY LAST**

1962 Ford Fairlane V-8, 4-dr., straight dr., one owner, low mileage	\$1195
1961 Ford Galaxie V-8, 4-dr. automatic, local car	\$1295
1961 Rambler 6-cyl., 4-dr. straight drive, one owner, local	\$1095
1961 Corvair Monza 900, bucket seats, 4-in-floor, 1 owner, 23,000 actual miles	\$1195
1960 Rambler 6-cyl., 4-dr. automatic	\$745
1953 DeSoto, good second car	\$195

See Willard Palmer at
McCoy Rambler Co.

Highway 45 North

GOOD NEWS FOR HOG RAISERS

\$8 OFF PER TON

On Most Ful-O-Pep Hog Feeds

The top feeding efficiency you get with Ful-O-Pep Hog Feeds has always been good news. Now—even better—you get Ful-O-Pep Hog Feeds with top feeding efficiency at a sale price—\$8 off per ton—sale ends October 17, 1964. Apply to most Ful-O-Pep Hog Feeds including top-efficiency Ful-O-Pep Pork 45 Supplement.

Take Advantage of This Opportunity to Save Real Cash

FRANKSTOWN GIN

BOONEVILLE
Phone 728-4517

BALDWIN
Phone FO 5-2512

IT'S ALL IN THE WANT ADS

BUY • SELL • HELP WANTED • EMPLOYMENT • LOST AND FOUND • FOR HIRE • BUY • FOR HIRE •

FOR SALE

KENNETH SMITH Firestone Dealer

is pleased to announce that **O. E. Strickland** is now working with them at the ... **Firestone Store.**

KENNETH SMITH

Firestone Dealer
CUSTOMER SATISFACTION
GUARANTEED

FOR SALE: A 65,000 BTU gas heater, one 24,000 BTU space heater, one 18,000 BTU space heater and one bathroom heater. Call 8-5596 or the Chancery Clerk's office. 25-5tc

FOR SALE OR TRADE: Female Mexican Burro, 6 years old, gentle. See or call Harold Coley at Thrasher, 728-6167. 25-2tp

FOR SALE: Personalized Christmas Cards and all occasion cards for sale. Call Mrs. Ken Taylor, 728-4096. 25-2tc

FOR SALE: Several thousand loaves of bread. See Ben T. Weeks. Phone 728-5164. 23-5tp

FOR SALE: Barnyard manure for your yards or gardens. \$5.00 pickup load. Call Cliff Cartwright at 728-4389 after 3:30 p.m. 23-3tc

FOR SALE — Quail \$1.00 each; Pheasants \$2.50 each. Contact William Dallison, phone 728-4750 or 728-4428. 22-4tc

FOR SALE: All aluminum utility trailer, 4 ft. by 8 ft., 21 inches deep, complete with hitch and lights. Booneville Tractor Company, phone 728-4981. 21-4tc

FOR SALE: 1960 Valiant Station Wagon, one owner. Will finance. 2,000 actual miles. See Kenneth Pounds. 20-4tc

SINGER AUTOMATIC ZIG-ZAG SEWING MACHINE, 1964 Model, just like new. Makes buttonholes, sews on buttons, fancy designs. Does everything. Want responsible party in this area to assume last 9 payments of \$9.75 each. Reply, Credit Manager, 410 W. Capitol, Jackson, Miss. 20-4tc

Jewey Nicholson delivers the Clarion-Ledger and Dwight Nicholson delivers the Jackson Daily News. If interested in a subscription call 6-5661 or 8-5307. 15-1tc

NEW SUMMER TROUSERS, Rayon and Acetate, washable. What would be cheaper for work trousers or school trousers for the high school boys? Special for July at only \$1.49 pair. DIXIE TRADING COMPANY. 15-1tc

HOGMEN — Don't take chances, vaccinate your hogs at 7 weeks of age for Cholera and Erysipelas. See us today for all your livestock vaccines. Chittom Milling Co. 13-4tc

NOTICE — Distributors of the Kirby Sanitronic Vacuum Cleaner. No other cleaner does as much for your home. Free demonstration. D. S. Heard, Sales Representative, phone 728-5757. 9-4tc

FOR WATCHES, DIAMONDS, JEWELRY and the best in watch repairing in town, go to Smith Goddard's Jewelry. If you don't know diamonds or jewelry, the best thing for you is to know a jeweler you can trust. We give S & A Green Wamps. Customer Satisfaction Guaranteed. 48-4tc

GOOD CLEAN, USED Electric Stoves. These stoves have all been checked and repaired when necessary. DIXIE TRADING COMPANY Phone 728-4634, Corner Church and Hotel Streets. 44-4tc

FOR SALE: Esso, Esso Extra and Uniflow Motor Oils, Dobbins, Service Sta., Phone 728-4861. 3-4tc

USED reconditioned electric refrigerators. From \$25 up. DIXIE TRADING COMPANY. Phone 728-4634, Corner Church and Hotel Streets. 44-4tc

FOR SALE House Trailer

1962 MODEL
1-BEDROOM, 36 FEET LONG;
AIR-CONDITIONED.

Will Finance to Right Person.

N. A. Rone
351 KING STREET
PHONE 728-6506

24-1tc

FOR SALE: 1961 Volkswagen, in good condition, only \$900. See Richard Sanders at The Sanders Farm. 24-2tp

FOR SALE: Frankstown rubber tire wagon. Write B. F. Windham, Route 1 or see him at Thrasher. 24-2tp

FOR SALE: One Zenith TV, 1963 model, console, walnut cabinet, remote control. Like new. Call 728-6181. 24-2tc

USED REFRIGERATORS, ranges, and other appliances at money-saving low prices. We also rent refrigerators. John H. Price, Masonic Building. 26-4tc

USED APPLIANCES — Refrigerators, Televisions, Electric Ranges, Washing Machines, Reconditioned and Guaranteed, at prices to save you money. Western Auto Associate Store. 4-4tc

URNITURE — Living room suites, bedroom suites, platform rockers, reclining chairs, kitchen cabinets, box springs, mattresses, rocking chairs, dinette suites, sewing machines, new and used. Western Auto Store. 51-4tc

FOR SALE: Metal drums, 15-gal. capacity. \$1.00 each. Apply at the Banner-Independent Office or telephone 728-5079. 11-xx

YOU WILL FIND Just the RIGHT SIZE shoe for that boy or girl at GRAY'S.

Widths A to D. All sizes.
It's so important for your children's feet to be fitted correctly.

FOR SALE: Kerosene, tractor fuel and diesel fuel for non-highway use. Dobbins Service Sta. 11-4tc

REAL ESTATE

FOR SALE:

THE HOME OF THE LATE MRS. LOUISE BOONE WOODRUFF, 206 HOTEL ST. FOR INFORMATION CALL AFTER 5:00 P.M. 728-4930 OR 728-5087. 25-4tc

NOTICE — Homes for Sale. New or used. Call 728-6163. W. E. Sharp. 23-4tc

FOR SALE — House and 3 acres with 300 ft frontage on Hatchie Street. Room for 5 additional lots. These lots alone will pay selling price of all. \$7500 for house and acreage or \$4900 for house and one lot.

BURRESS REALTY CO.
R. H. Burress, Sr. 728-4634 or 728-5656 22-1tc

House For Sale

3 Bedrooms, 2 Baths
Central Heating and Air Conditioning, Built-In Oven, Range on Parkwood Grove Road.

LOTS FOR SALE

Kemp Realty Co.
Phone 728-5508 or 728-5033 17-4tc

HOUSE and over two acres of land on black-top — Old Marietta Rd., one-fourth mile from city limits. 5 rooms and bath, city water and gas. Good garden spot. You can sell off enough building lots to almost pay for property. \$7950 with one-half down. R. H. BURRESS, Broker, BURRESS REALTY CO. 24-4tc

FOR SALE: One mile north of Marietta on 363 Highway, 93 acre farm, 7 room Rock Veneer house, modern equipped. Also 72 acre farm, house and barn and several building lots. W. O. Harris, East Church St., Booneville, Miss. Telephone 728-4535. 24-6tp

HOME FOR SALE: 2 bedroom, living room, kitchen and breakfast room, nice lot. 407 Cherry St. Call H. F. Raspberry, VI 2-1128, Tupelo. 24-2tc

LOVELY New Brick Home across street from Junior College Campus. Three bedrooms, two baths, both ceramic tile. Beautiful combination den and kitchen. Wall to wall carpet living room and bedrooms. Entrance hall quarry tile. Ten closets, big double garage. All weather air conditioning. This house completed less than a year ago and only lived in for a few months. Owner moving to job out of state, reason for selling. If you see it you will love it. R. H. BURRESS, Broker, BURRESS REALTY COMPANY. 24-4tc

HOUSES FOR SALE
Two bedroom frame on Long St.
Two bedroom frame on Franks Street.

Five bedroom frame on College Street.
Two bedroom and den frame, 10 acres land on Tusculum Road.
Three bedroom brick, basement, Highway 45 North.

Five bedroom frame on Highway 30 East, inside city.

Two bedroom frame on Old Marietta Road, East.

Three bedroom, den, frame on Adams Street.

Three bedroom brick, large lot on Jefferson Street.

Two frame houses, 5 1/2 acres on Jacinto Road, just outside city limits.

THERON S. POUNDS

Real Estate

Phone 728-4173

17-1tc

FOR SALE: 40 acres just out of Shiloh National Park on blacktop road. Ideal location for tourist court. Bordered on east side by plenty of good fishing water. Lealon George. 16-4tc

BRICK VENEER, 6 room and carport. Built-in electric range and oven. Central heat and air-conditioning. Only 3 years old, on one acre 3 1/2 miles from Booneville on blacktop highway. If you want the comforts of city living in the good quiet country this is it. This is one of the best buys you will ever find at \$18,000. R. H. BURRESS, SR., Broker. 15-4tc

FOR SALE: Two bedroom house with bath and nearly 4 acres of land, near Tusculum Community. Gas heat. Bargain. See Rob Sartin, phone 728-5712. 15-4tc

4 ACRES very close in to business section and just off Highway 45. This property is perfect for apartment house, rent houses, or subdivision. If you are looking for an investment this is one of the best. R. H. (BOBBY) BURRESS, Broker. 15-4tc

THREE BEDROOM HOUSE (spanking new) on nice lot across street from Kemp's Super Market. This is a mighty good location and near high school. R. H. BURRESS SR., Broker. 15-4tc

HOUSE AND LOT FOR SALE: South side Washington St. Call after 4:00 p.m. 728-6168, M. P. Holder. 15-4tc

WANTED — Real Estate of all kinds to sell. We need houses and lots. See us if you want to get top dollar for your property. New office at Dixie Trading Co., corner of Church & Hotel Sts. Phone 728-4634 or 728-5656. Bobby Burress, Sr., Burress Realty Company. 48-4tc

FOR RENT

FOR RENT: Unfurnished apartment, front entrance, living room and 1 bedroom, bath, kitchen and breakfast room, gas heat, water furnished. Mrs. Kate Long, 204 Hotel Street. 25-4tc

FOR RENT: Furnished apartment at 115 Bishop St., located between town and College. Call after 3:30 p.m. 728-5615. 25-4tc

FOR RENT: 5-room house and bath, gas heat, 3 miles north of city limits, furnished or unfurnished. Phone 728-4366, Mrs. R. C. Tice. 24-4tc

FOR RENT: 2-bedroom house, located on East Church Street. See Mrs. Minnie Morgan or call 728-4935 days or 728-4124 nights. 24-2tp

FOR RENT: Two furnished apartments. Call 728-4865 or 728-4012. 24-4tc

FOR RENT: Furnished apartment, private bath. Water and lights furnished. Phone 728-5977, 120 North 4th St. 23-4tc

FOR RENT: 4-room house, good condition, truck patches, fish pond, on school and milk route. See Mrs. Jewel Vest or Roy A. Smith, Route 1, Booneville or call 728-5178. 23-3tp

FOR RENT OR LEASE

In Heart Of Booneville
NEWLY DECORATED

OFFICE SUITE

FULLY COMPLETE
READY FOR OCCUPANCY

If you want a real nice office at reasonable rent,

See **Albert Feldman**
at once, Phone 728-5911 or 728-4084. 22-4tc

WANTED

WANTED: The opportunity to fill your fall purchase orders for lime, seed, and fertilizer. CAVER SEED AND FERTILIZER COMPANY, 728-4486. 21-4tc

NEED CASH to buy a bargain? See Billy Fester at Booneville Loan Co., North Miss. Savings & Loan Bldg. 728-6228. 8-4tc

WANTED: Good used furniture. We buy by the piece or house full. DIXIE TRADING COMPANY. Phone 728-4634, Corner Church and Hotel Streets. 44-4tc

CONTRACTS WANTED — To build new homes, additions, commercial and industrial buildings. \$50.00 commission to one who secures nice contract. Financing if desired. See or call Honnell English, English Construction at K. & E. Salvage. Also tractor with ditch digging machine for hire. Day phone 728-5406, nights 728-6162. 9-4tc

WANTED: Ear corn, paying top prices. Chittom Milling Company. 35-4tc

MONEY TO LOAN

LOANS

OF ALL KINDS AT
Stell Finance Co.
Upstairs over Way-Fil Jewelry

ANNOUNCEMENTS

Vogue Beauty Shop SPECIAL

We are happy to announce Bonnie Hannon is now with us at the VOGUE BEAUTY SHOP. Why not come by today or call 728-5400 for one of her specials.

\$ 7.50 PERMANENT \$ 6.50
\$12.50 PERMANENT \$ 8.00
\$20.00 PERMANENT \$10.00
MANICURE — 75c

SAPPINGTON CAB CO.

At corner Front and College St.
From 5 a.m. Until
PHONE 728-5485
Leonard Sappington,
owner and operator 22-4tc

air conditioning

Guaranteed performance with complete service on Central Heat and Air Conditioning. Lowest cost to you. Call Home Comfort Service, Frank May, 728-5577. 13-1tc

NOTICE — Jackson, Tulon and Lena Saw Mill.

We sell and deliver lumber and slabs from our mill at Hill's Chapel, Rt. 6, Booneville. Phone 728-6663, Highway 30 East. 22-4tc

NOTICE — I will not be responsible for my wife's (Estoria Powell) debts anymore. Theron L. Powell. 22-3tp

DO YOU have a watch or an electric clock that is not running correctly? Why not bring it to JACK'S WATCH & CLOCK REPAIR SHOP, next to Goodwin's Laundry and have it repaired. Free estimate on all work and all work guaranteed. Jackie L. Hester, Owner. 2-4tc

WE MOW YARDS; Also repair lawn mowers, Stephenson Repair Shop, phone 728-4483. 7-4tc

PROFESSIONAL WATCH REPAIR

DIAMOND REMOUNTING
Way-Fil Jewelry

NOTICE — If you have cattle or hogs to sell or if you need to buy cattle or hogs, see or call me. Jim James, 728-4341. 52-4tc

NOTICE

We build brick homes. We do home repairs. We do remodeling. We build frame homes. We do additions.

We can save you money on construction and financing, 100% financing. Call MOSE McMILLAN, 728-4269, Booneville, Miss. Free estimates. Southern Construction Co., Inc. 41-4tc

HELP WANTED

WANTED: A domestic maid to go to Chicago to take care of children. Living quarters will be furnished. Call 8-5325. 25-4tc

\$65 WEEKLY AND MORE — For reliable man or woman to service Watkins customers in Booneville. Full or part time. No investment. Write C. R. Ruble, Dept. S-1, P.O. Box 2447, Memphis, Tenn. 24-2tp

MANAGER-IN-TRAINING — F. E. Compton & Co. has new Manager-in-Training contracts. For only 7 orders per month, a \$600 guarantee. If you have managerial ability and can sell honestly and ethically, write Division Manager Herman Moore, F. E. Compton & Co., Massey Bldg., Birmingham. State experience, age in first letter. Will consider inexperienced person as position must be filled. 24-2tc

EARN that needed money "The Avon Way." For details write Mrs. Connie Ellard, Avon Manager, Aberdeen, Miss. No obligation. 24-3tc

WOMEN — Christmas selling starts early with Avon Cosmetics — part or full time — valuable sales territory now available. Write Mrs. Connie Ellard, Avon Manager, Aberdeen, Miss., or call EM 9-4863. 24-3tc

Are you looking for a good part-time or full-time income in N. Prentiss Co. or Booneville. Many Rawleigh Dealers earn \$2.50 and up per hour. Write Rawleigh, MS 1 100 26, Memphis, Tenn. 22-6tp

MISCELLANEOUS

SEPTIC TANKS — Pumped and cleaned. Call Jimmie Grizzard, phone PA 8-4462. 15-1tc

TUNE to WVOM Radi, 1270 on your dial for the Free Will Baptist Hour, presented each Sunday morning at 8:30 by the Little Brown Creek Association of Free Will Baptists. WVOM, Iuka. 25-4tc

POSTED

All lands owned or managed by persons listed below are posted against hunting, fishing, trespassing and livestock running at large: Mrs. Georgia McClamroch Est. 27-4tc
Mrs. Sidney B. Robinson 22-52tc
Paul Ratliff 31-4tc
Miss Pearl Smith, Rt. 6 32-24tp
A. C. Wheeler 52-20tc
Myrl Fowler 3-52tp
J. A. Hicks 12-10tp
Mrs. Lela Berryhill 15-18tp
R. G. Houston and Duane Rinehart 21-10tp
Dell Eaton 24-5tp
M. C. Lee Farm by Elmer Shackelford 24-10tp
Mrs. D. H. Goff 25-8tp
Mrs. T. K. Young 25-3tc
G. T. Young 25-3tc
T. C. Young 25-3tc

NOTICE — Raking and baling hay for the public. 18c a bale. See or call Carmon Breedlove. 728-4556. 12-4tc

BRING YOUR FAMILY LAUNDRY to the self-service, coin-operated LAUNDERETTE, across the street from Walden Motor Co. We never close. 52-4tc

PLUMBING AND ELECTRICAL WORK. Dependable service. Reasonable rates. H. W. (Pop) Garner. Phone Day 728-5905; Night Phones, PA 8-4078 or 728-4839. 47-4tc

NOTICE — Would you like to redo your kitchen? It can be done under a home improvement plan. Built-in stoves, dishwashers and other repairs may be done under three-year payment plan. For more details contact the Brown Plumbing & Elec. Supply Co. 18-4tc

Homelite Chain Saws
Pioneer Chain Saws
Lawn Boy Mowers
SALES & SERVICE

Complete Service On Other Brands Also

Tire Re-Capping
Headquarters

Most complete stock of Re-Caps in Prentiss County.

JOE PARR
Tire & Appliance
Corner Church and Front Sts.
PHONE 728-5522

BACK TO SCHOOL — and back to the refrigerator after school. Make sure you have plenty of boiled eggs for your children's snacks. Nothing could be better for them and no eggs could be finer, than FRESHLAI BRAND EGGS. 22-1tc

EXECUTRIX' NOTICE TO CREDITORS

Letters Testamentary having been granted on September 15, 1964 by the Chancery Court of Prentiss County, Mississippi to the undersigned as Executrix of the Estate of Walker W. Swinney, deceased, notice is hereby given to all persons having claims against said estate to present the same to the Clerk of said Court for probate and registration according to law, within six months from this date, or they will be forever barred. This September 17, 1964.

LOTTIE L. SWINNEY,
EXECUTRIX. 25-4tc

CARD OF THANKS

We wish to extend our thanks to McMillan Funeral Home and to Bro. Roby and Bro. Jones for their comforting words and to everyone for their kindness, the flowers, food, and service rendered during the illness and death of our husband and father, Cullen B. Stennett.

Pauline, Sarah, and Bill 25-1tc

CARD OF THANKS

We wish to express our deepest thanks to our friends and neighbors during the sickness and loss of our husband and father. To the doctors and nurses in Baldwin hospital who were so nice and to Rev. Gore for the comforting words. May God bless each of you. The family of Walker Swinney. 25-1tp

Party Honors Miss Moorhead And Miss Vail

An Off-To-College party honoring Caraly Moorhead and Carol Vail was given by Judy White following Friday night's football game between Booneville and Baldwin.

The delightful event was held at the home of Mr. and Mrs. Bill White, parents of Judy. On hand to help with the entertainment was Mr. and Mrs. White's young son, Billy.

The living room was gaily decorated with college pennants and foil covered megaphones on which was written, "MSCW", "Millsaps" and "NEMJC".

The delicious menu served buffet style consisted of baked ham, potato salad, dip with potato chips, olives, pickles, assorted crackers, cookies and drinks. The buffet table was decorated with an attractive arrangement of dahlias, fern and other fall flowers.

The sixty guests enjoyed dancing, and several of the girls played harmonicas to the delight of the crowd.

Following the party, Judy had a spend-the-night party and guests included Paula Ellzey, Diane Freeman, Betty Billingsley and Caraly Moorhead.



MISS PHEBE HOPPER

Miss Phebe Hopper, District Governor, To Visit Local Pilot Club Tonight

Miss Phebe Hopper, Governor of District III, Pilot International, will make her official visit to the Pilot Club of Booneville this evening at the regular business meeting at the Town Motel.

Miss Hopper lives in Corinth and is a charter member of the Pilot Club of Corinth and has served her local club as president, treasurer, and corresponding secretary. She has served as treasurer and First Lieutenant Governor of District III and is currently serving on the board of directors of Pilot International.

Active in all civic activities in Corinth, Miss Hopper has served as Chairman of the Alcorn County T. B. Association for two years and as representative for a Girl Scout Troop sponsored by the Pilot Club for several years. She is employed by the Corinth Machinery Company in Corinth.

The Pilot Club of Booneville will honor her with a patio party at the home of Mrs. E. O. Roden at 6:00 p.m. prior to the business meeting at 7:00.

BOX OFFICE
OPENS
6:30 P. M.

SCENIC
DRIVE-IN

ADULTS — 50c
CHILDREN
UNDER 12 FREE

THURSDAY-FRIDAY — SEPTEMBER 17-18



SATURDAY — SEPTEMBER 19
'BEACH PARTY'
COLOR
P L U S
'Nightmare'
DAVID KNIGHT
MOURA REDMOND

SUNDAY-MONDAY-TUESDAY — SEPTEMBER 20-21-22



WEDNESDAY, SEPTEMBER 23 — CARLOAD — 50c
'WALK TALL'
P L U S
'Nine Hours To Rama'

GOODWIN'S Philco-Bendix Automatic Laundry AND Coin Operated Dry Cleaners

New Wing and New Black Top Job Completed
Drive all the way around building. Six doors entering to washers for your convenience.

50 Washers - 17 Dryers
Washers - Double Loads 35c, Singles 25c
They give two washes, three rinses and filter in tumble action. We also have agitator machines.